

INDEX OF SHEETS

Sheet No.	Description
1	COVER SHEET
2	TYPICAL CROSS SECTION AND DETAILS
3	DETAILS & SCHEDULES

STANDARDS

701301-02	TRAFFIC CONTROL
701306-01	TRAFFIC CONTROL
702001-06	TRAFFIC CONTROL

SUMMARY OF QUANTITIES

CODE NO.	DESCRIPTION	QUANTITY	UNIT
* 40600100	BITUMINOUS MATERIALS (PRIME COAT)	10534	GALLON
40600300	AGGREGATE (PRIME COAT)	213	TON
40600625	LEVELING BINDER (MACHINE METHOD), N50	2895	TON
40600982	HOT-MIX ASPHALT SURFACE REMOVAL - BUTT JOINT	372	SQ YD
40600990	TEMPORARY RAMP	28	SQ YD
* 40603310	HOT-MIX ASPHALT SURFACE CSE. MIX "C", N50	3740	TON
40800050	INCIDENTAL HOT-MIX ASPHALT SURFACING	113	TON
* 48101200	AGGREGATE SHOULDERS, TYPE B	2469	TON
67100100	MOBILIZATION	1	L SUM
* 70100460	TRAFFIC CONTROL AND PROTECTION, STD 701306	1	L SUM
* 70300100	SHORT-TERM PAVEMENT MARKING	4242	FOOT
* Z0048665	RAILROAD PROTECTION LIABILITY INSURANCE	1	L SUM

Construction Code I000
* Special Provisions

CONTRACT NO. 87346

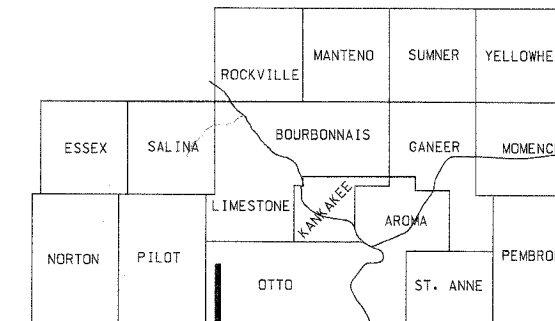
J.U.L.I.E. 1-800-892-0123

STATE OF ILLINOIS
DEPARTMENT OF TRANSPORTATION
COUNTY OF KANKAKEE
DEPARTMENT OF HIGHWAYS
PLANS FOR PROPOSED
FEDERAL AID SECONDARY PROJECT
SECTION 04-00107-04-RS
F.A.S. 316 (C.H.28) PROJECT RS-316 (109)
JOB NO. C-93-058-07

F. A. S. ROUTE NO.	SEC.	COUNTY	NO. SHEETS	SHEET NO.
316	*	Kankakee	3	1
ILLINOIS PROJECT RS-316 (109)			CONTRACT NO. 87346	

* 04-00107-04-RS

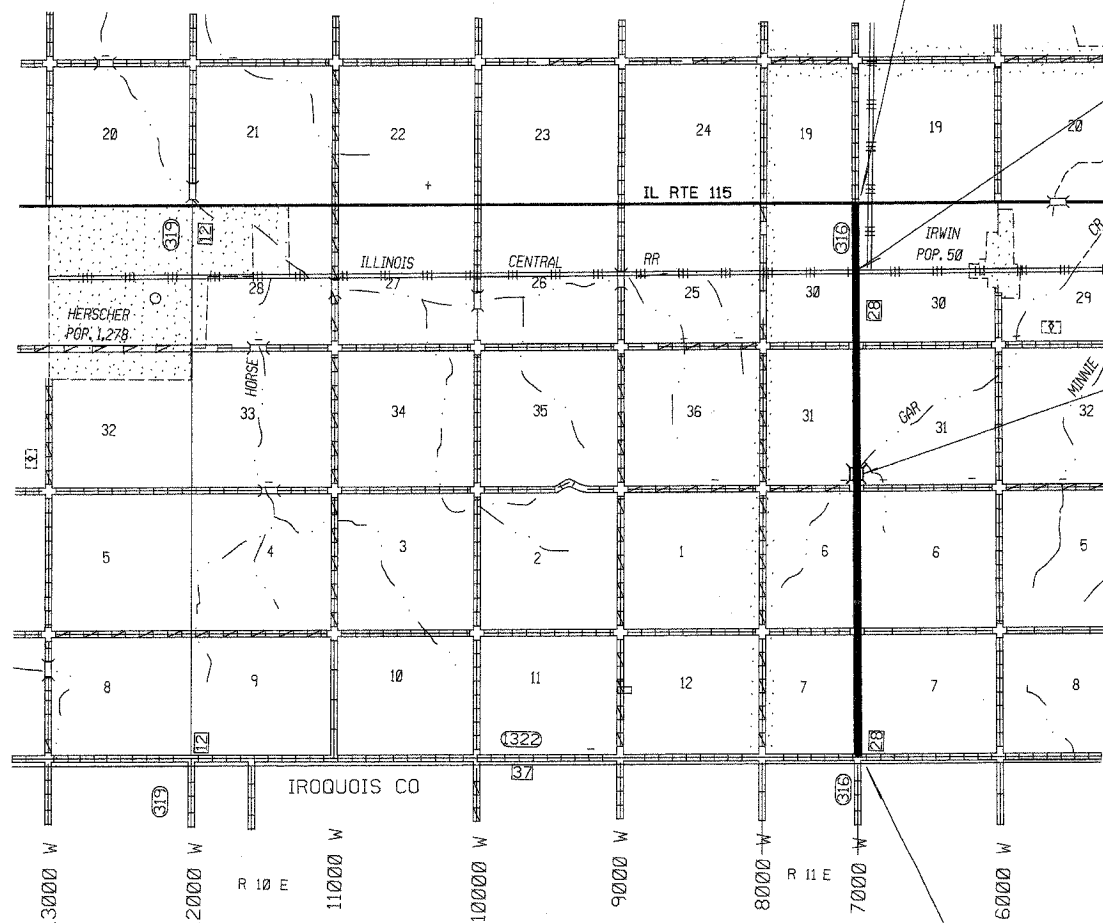
KANKAKEE COUNTY



PROJECT LOCATION



LOCATION MAP



STA. 0+13
CONSTRUCTION STARTS
(STA. 0+13 = SOUTH EOP IL RT 115)

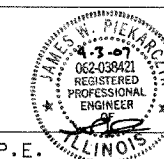
BR. STRUCTURE
NO. 046-3410

THE ACCEPTANCE OF THIS PROJECT IS BASED ON THE MINIMUM DESIGN CRITERIA FOR LOCAL AGENCY PAVEMENT PRESERVATION POLICY (LAPP) PROJECTS

CLASS III ROAD
2007 CURRENT A.D.T. = 725
2017 DESIGN A.D.T. = 815
DESIGN SPEED = 55 M.P.H.
ROADWAY CLASSIFICATION = COLLECTOR

STATE OF ILLINOIS
DEPARTMENT OF TRANSPORTATION
DIVISION OF HIGHWAYS

Approved 4-3 2007



JAMES W. PIEKARCZYK, P.E.
KANKAKEE COUNTY ENGINEER

Passed 04-06 2007

KENNETH R. LANG
BUREAU CHIEF, LOCAL ROADS & STREETS

Releasing for Bid Based on Limited Review 04-06 2007

GEORGE RYAN
REGION 2 ENGINEER

STA. 214+07
CONSTRUCTION ENDS
(STA. 214+40 = NORTH EOP CH 37)

GROSS LENGTH = 21,394 LIN FT = 4.05 MILES