

INDEX OF SHEETS

Sheet No.	Description
1	COVER SHEET
2	TYPICAL CROSS SECTION AND DETAILS
3	DETAILS & SCHEDULES

STANDARDS

701301-02	TRAFFIC CONTROL
701306-01	TRAFFIC CONTROL
702001-06	TRAFFIC CONTROL

SUMMARY OF QUANTITIES

CODE NO.	DESCRIPTION	QUANTITY	UNIT
* 40600100	BITUMINOUS MATERIALS (PRIME COAT)	10534	GALLON
40600300	AGGREGATE (PRIME COAT)	213	TON
40600625	LEVELING BINDER (MACHINE METHOD), N50	2895	TON
40600982	HOT-MIX ASPHALT SURFACE REMOVAL - BUTT JOINT	372	SQ YD
40600990	TEMPORARY RAMP	28	SQ YD
* 40603310	HOT-MIX ASPHALT SURFACE CSE. MIX "C", N50	3740	TON
40800050	INCIDENTAL HOT-MIX ASPHALT SURFACING	113	TON
* 48101200	AGGREGATE SHOULDERS, TYPE B	2469	TON
67100100	MOBILIZATION	1	L SUM
* 70100460	TRAFFIC CONTROL AND PROTECTION, STD 701306	1	L SUM
* 70300100	SHORT-TERM PAVEMENT MARKING	4242	FOOT
* Z0048665	RAILROAD PROTECTION LIABILITY INSURANCE	1	L SUM

Construction Code I000  
\* Special Provisions

CONTRACT NO. 87346

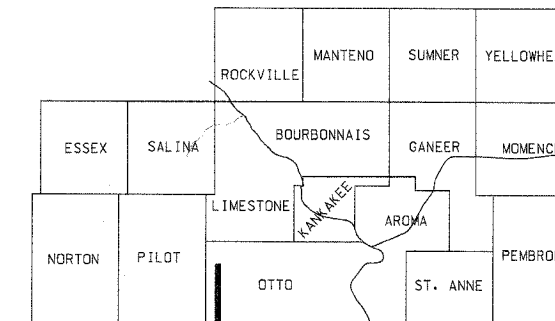
J.U.L.I.E. 1-800-892-0123

STATE OF ILLINOIS  
DEPARTMENT OF TRANSPORTATION  
COUNTY OF KANKAKEE  
DEPARTMENT OF HIGHWAYS  
PLANS FOR PROPOSED  
FEDERAL AID SECONDARY PROJECT  
SECTION 04-00107-04-RS  
F.A.S. 316 (C.H.28) PROJECT RS-316 (109)  
JOB NO. C-93-058-07

F.A.S. ROUTE NO.	SEC.	COUNTY	NO. SHEETS	SHEET NO.
316	*	Kankakee	3	1
ILLINOIS PROJECT RS-316 (109)			CONTRACT NO. 87346	

\* 04-00107-04-RS

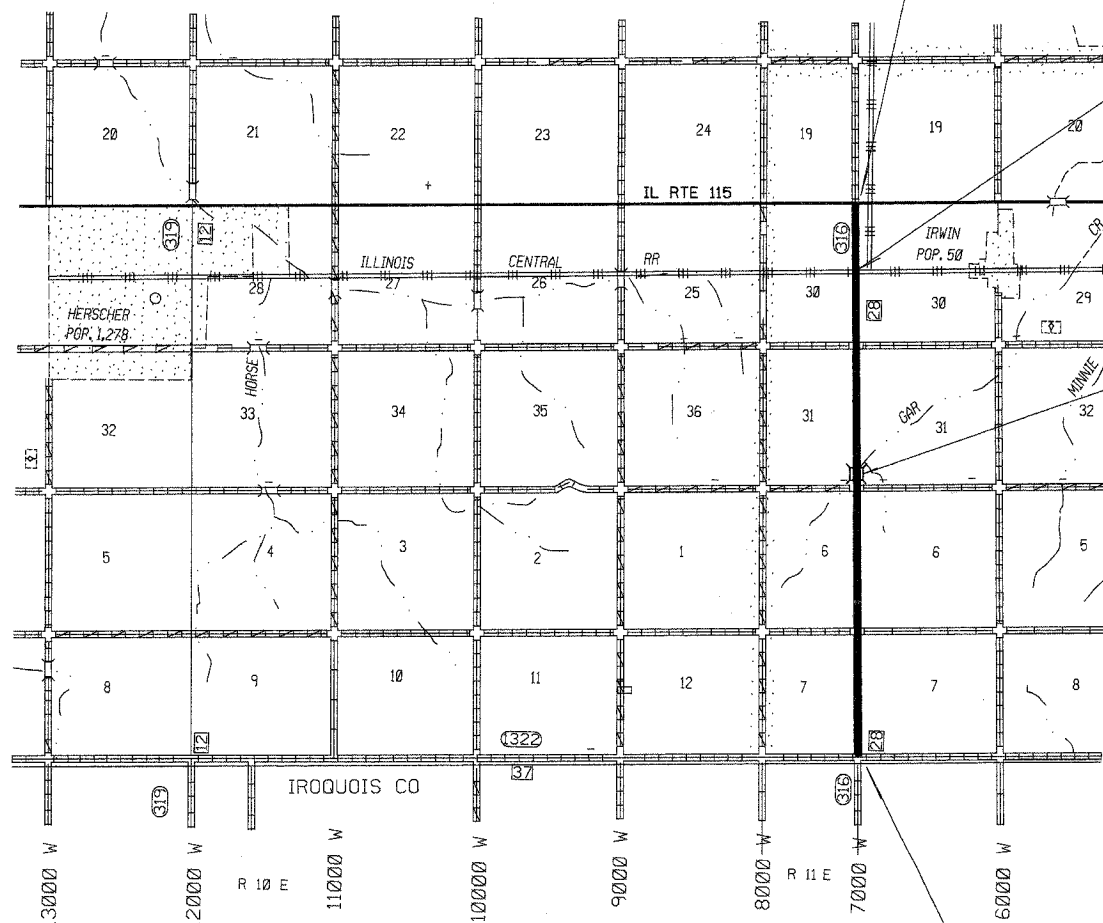
KANKAKEE COUNTY



PROJECT LOCATION



LOCATION MAP



STA. 0+13  
CONSTRUCTION STARTS  
(STA. 0+13 = SOUTH EOP IL RT 115)

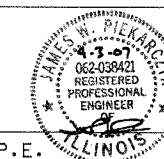
BR. STRUCTURE  
NO. 046-3410

THE ACCEPTANCE OF THIS PROJECT IS BASED ON THE MINIMUM DESIGN CRITERIA FOR LOCAL AGENCY PAVEMENT PRESERVATION POLICY (LAPP) PROJECTS

CLASS III ROAD  
2007 CURRENT A.D.T. = 725  
2017 DESIGN A.D.T. = 815  
DESIGN SPEED = 55 M.P.H.  
ROADWAY CLASSIFICATION = COLLECTOR

STATE OF ILLINOIS  
DEPARTMENT OF TRANSPORTATION  
DIVISION OF HIGHWAYS

Approved 4-3 2007



JAMES W. PIEKARCZYK, P.E.  
KANKAKEE COUNTY ENGINEER

Passed 04-06 2007

KENNETH R. LANG  
BUREAU CHIEF, LOCAL ROADS & STREETS

Releasing for Bid Based on Limited Review 04-06 2007

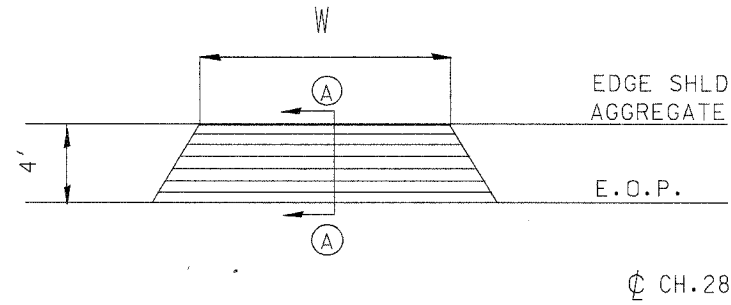
GEORGE RYAN  
REGION 2 ENGINEER

STA. 214+07  
CONSTRUCTION ENDS  
(STA. 214+40 = NORTH EOP CH 37)

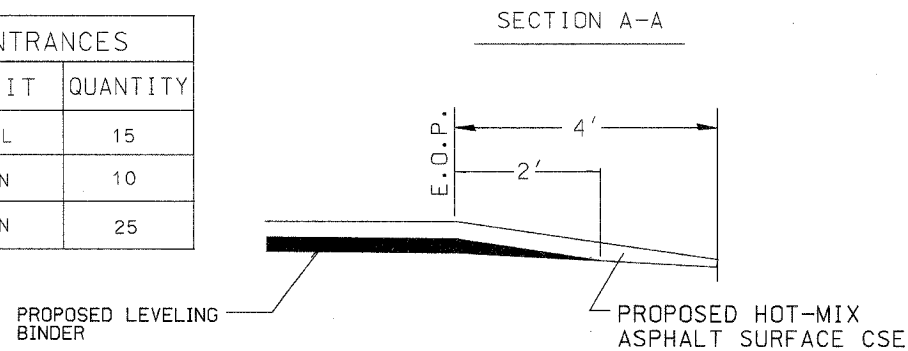
GROSS LENGTH = 21,394 LIN FT = 4.05 MILES

# TYPICAL ENTRANCE DETAIL

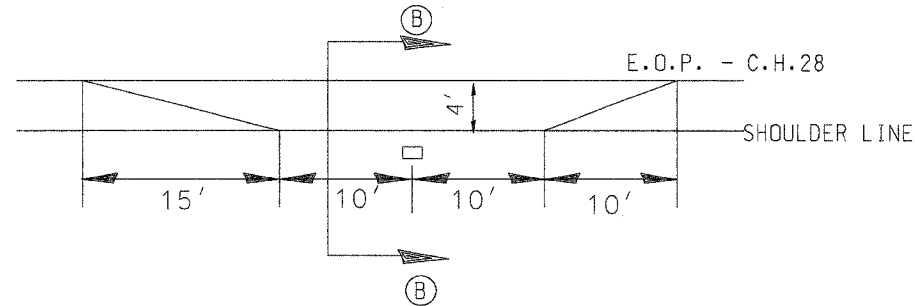
W: WIDTH OF APPROACH PADS IS ESTIMATED AT 20' PER ENTRANCE. THE ACTUAL CONSTRUCTED WIDTH MAY VARY AS DIRECTED BY THE ENGINEER TO FIT THE EXISTING ENTRANCES. FIELD ENTRANCES SHALL NOT RECEIVE HOT-MIX ASPHALT SURFACING UNLESS DIRECTED BY THE ENGINEER.



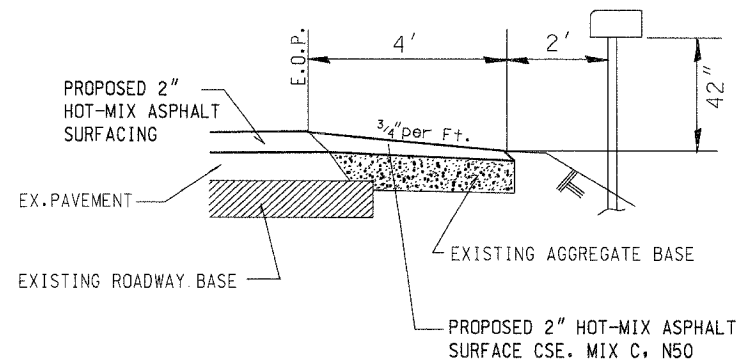
ESTIMATED QUANTITIES- 15 ENTRANCES		
ITEM	UNIT	QUANTITY
BITUMINOUS MATERIALS ( PRIME COAT )	GAL	15
LEVELING BINDER (MM) N50	TON	10
HOT-MIX ASPHALT SURFACE CSE MIX C. N50	TON	25



# TYPICAL MAILBOX TURNOUT DETAIL



SECTION B-B



ESTIMATED QUANTITIES - 10 MAILBOX TURNOUTS		
ITEM	UNIT	QUANTITY
BIT. MATERIALS ( PRIME COAT )	GAL	20
HOT-MIX ASPHALT SURFACE CSE MIX C N50	TON	25

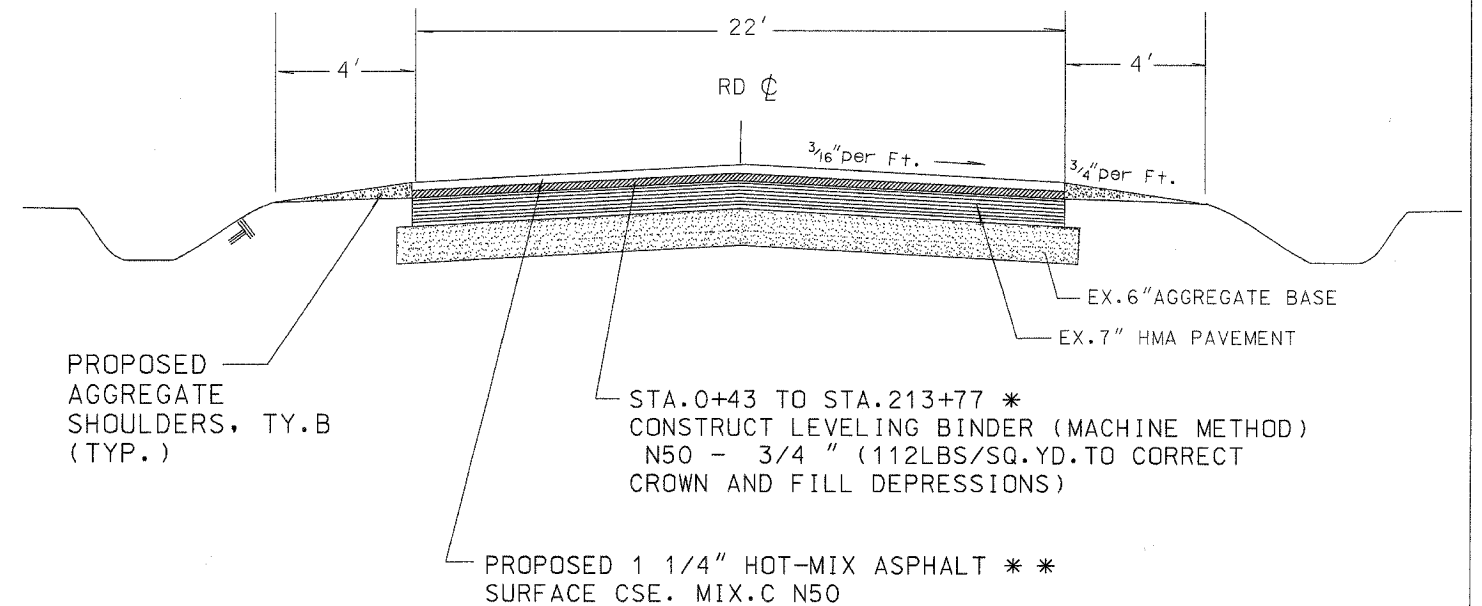
ALL MBTO'S HAVE BEEN PREVIOUSLY CONSTRUCTED AND SHALL RECEIVE HMA SURFACING ONLY.

SECTION	COUNTY	TOTAL SHEETS	SHEET NO.
04-00107-04-RS	KANKAKEE	3	2

CONTRACT NO. 87346

# TYPICAL CROSS SECTION

STA.0+13 TO STA.214+07



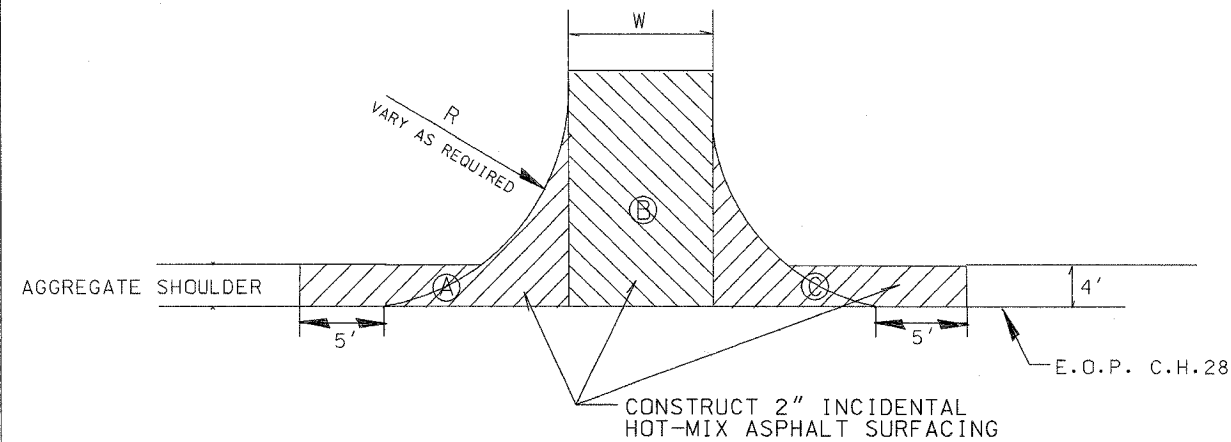
\* LEVELING BINDER OMISSIONS:  
 STA.25+85 TO STA.26+93 (RR X-ING)  
 STA.103+74 TO STA.105+36  
 (BRIDGE DECK = STA.104+24 TO STA.104+86))

\*\* HMA SURFACE CSE OMISSION:  
 STA.26+19 TO STA.26+59  
 (RR TIES STA.26+35 TO STA.26+43)

# ESTIMATED QUANTITIES ON TANGENTS

ITEM	UNIT	QUANTITY
AGGREGATE SHOULDERS TY.B	TON	2469
BITUMINOUS MATERIALS ( PRIME COAT )	GALLON	10459
AGGREGATE (PRIME COAT)	TON	209
HOT-MIX ASPHALT SURFACE CSE MIX C. N50	TON	3690
LEVELING BINDER (MM) N50	TON	2885
SHORT-TERM PAVEMENT MARKING	FOOT	4242

# INTERSECTION DETAIL



STATION	AREA	WIDTH	RADIUS	INCIDENTAL HMA SURFACING (TON)	BIT. MATRLS. (PRIME COAT) (GAL)	AGGREGATE (PRIME COAT) (TON)	LOCATION
0+13	A C	22	30	16	10	1	IL RT 115
53+40LT	A B C	18	30	22	5	0.5	5000S
53+71RT	A B C	16	30	15	5	0.5	5000S
107+24LT	A B C	16	30	15	5	0.5	6000S
107+24RT	A B C	16	30	15	5	0.5	6000S
160+91LT	A B C	16	30	15	5	0.5	7000S
160+91RT	A B C	16	30	15	5	0.5	7000S
TOTALS				113	40	4	

## Pavement Design Data

Design Period = 20 Years

ADT = 725 (2007) 815 (2017)

P.V. = 95 = 774 S.U. = 4 % = 33 M.U. = 1 % = 8

T.F. = 0.07

S.N. = 2.65

Pavement Structure Number

Ex. 8" AGGREGATE BASE (crushed) 8 x 0.08 = 0.72

Ex. 4" CLASS I 4 x 0.17 = 0.68

Ex. 1 1/2" CLASS I 1.50 x 0.23 = 0.35

Ex. 1 1/2" CLASS I 1.50 x 0.30 = 0.45

Prop. 2" HMA Surface Cse. 2 x 0.40 = 0.80

3.00

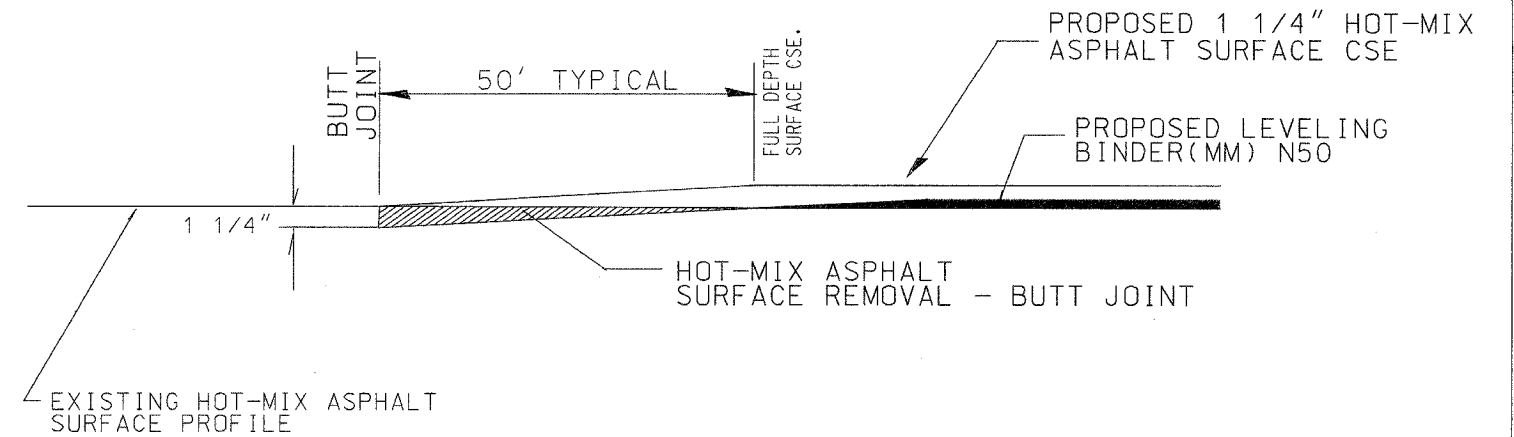
Marshall Stability ≥ 1700

	LEVEL BINDER	HMA SURFACE
PG GRADE	PG58-22	PG58-22
MAX % RAP ALLOWABLE**	SEE SPECIAL PROVISION	SEE SPECIAL PROVISION
DESIGN AIR Voids	4.0%	4.0%
MIXTURE COMPOSITION	IL 9.5	IL 9.5
FRICTION AGGREGATE	MIXTURE C	MIXTURE C
PLANT CONTROL LIMITS	CLASS I	CLASS I
DENSITY TEST METHOD	SATISFACTION OF THE ENGINEER	CORRELATION

\*\* IF RAP OPTION IS SELECTED, THE ASPHALT CEMENT GRADE MAY NEED TO BE ADJUSTED. THIS WILL BE DETERMINED BY THE ENGINEER.

SECTION	COUNTY	TOTAL SHEETS	SHEET NO.
04-00107-04-RS	KANKAKEE	3	3
CONTRACT NO. 87346			

# PAVEMENT REMOVAL DETAILS



STATION	HMA SURFACE REMOVAL - BUTT JOINT	TEMPORARY RAMP (3' Wide)
0+13	153	7
26+19	73	7
26+59	73	7
214+07	73	7
TOTALS	372 SQ YD	28 SQ YD

## GENERAL NOTES:

- IT SHALL BE THE CONTRACTOR'S RESPONSIBILITY TO DETERMINE THE ACTUAL LOCATION OF ALL UTILITY LOCATIONS .
- PERMANENT PAVEMENT MARKINGS TO BE INSTALLED BY THE KANKAKEE COUNTY HIGHWAY DEPT.
- FLAGMEN SHALL BE REQUIRED DURING PRIMING OPERATIONS.
- "BUMP SIGNS" SHALL BE REQUIRED AT ALL TANGENT HOT-MIX ASPHALT SURFACE REMOVAL - BUTT JOINT LOCATIONS. THE COST SHALL BE CONSIDERED AS INCLUDED IN THE TRAFFIC CONTROL PAY ITEM.