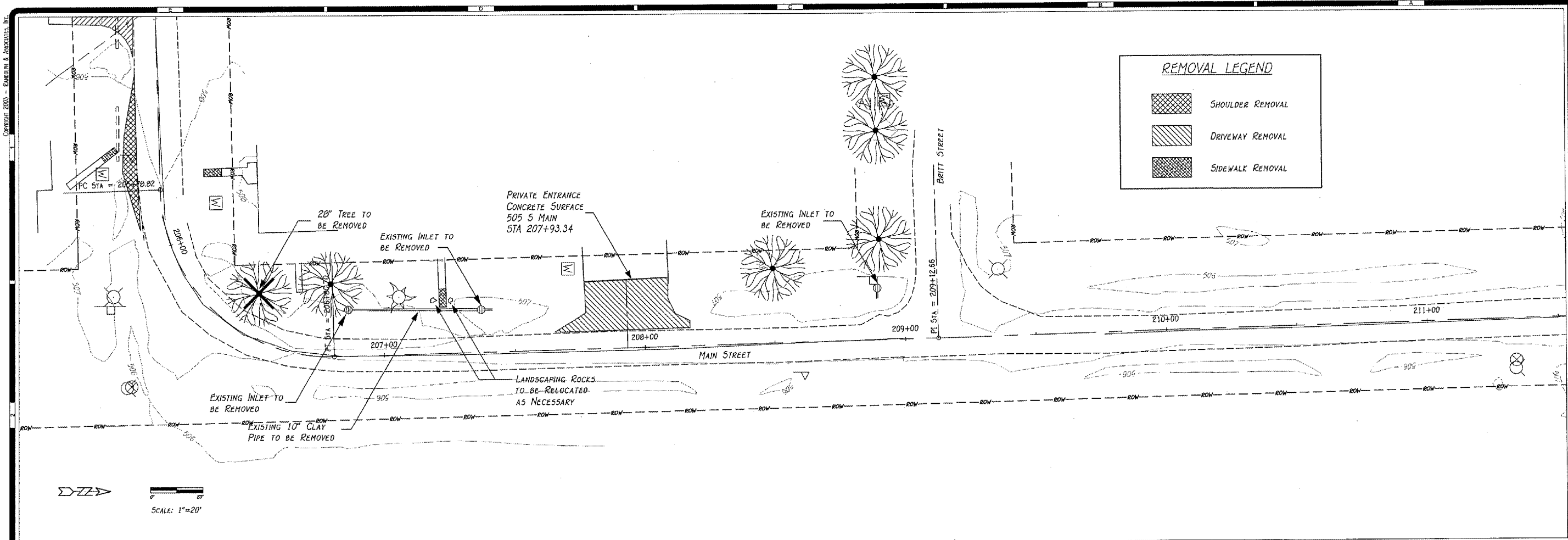



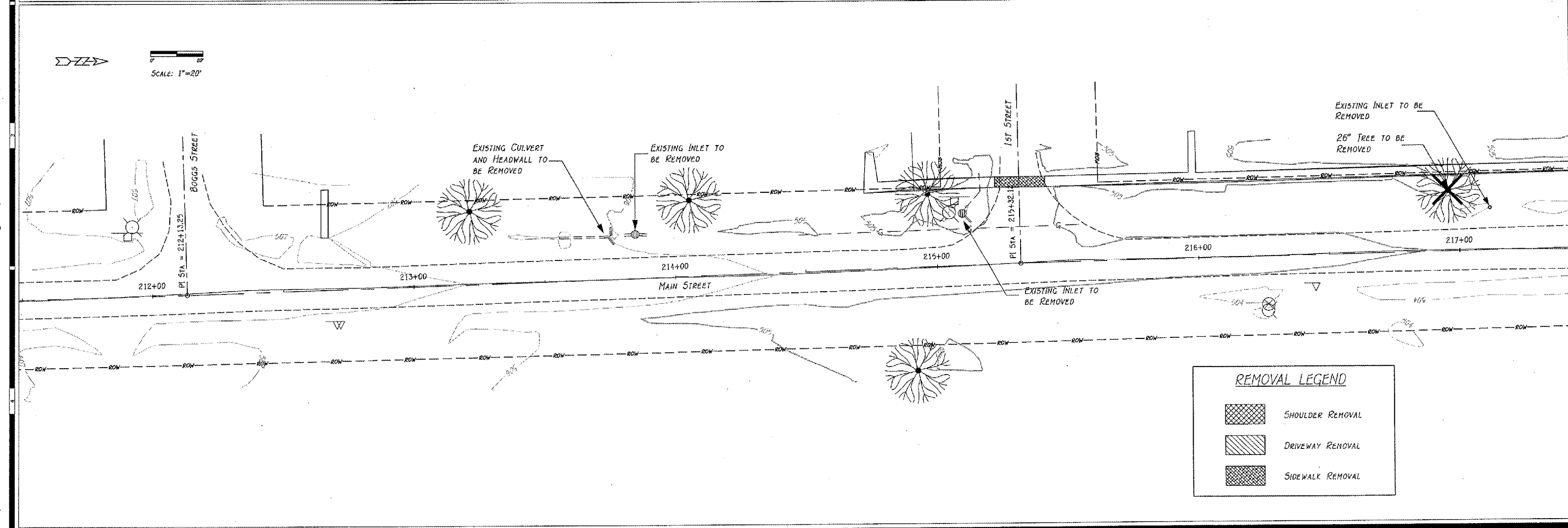


R:\Projects\0773\773-016\Cadd\Removal Detail Main2.dwg, Layout 1, 4/26/2007 10:27:42 AM, ThomasE, 1:2


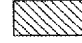



**REMOVAL LEGEND**

-  SHOULDER REMOVAL
-  DRIVEWAY REMOVAL
-  SIDEWALK REMOVAL



**REMOVAL LEGEND**

-  SHOULDER REMOVAL
-  DRIVEWAY REMOVAL
-  SIDEWALK REMOVAL

CONTRACT #09391  
SHEET 12 OF 43

REVISIONS	
NO.	DATE

REMOVAL PLAN  
**STREET IMPROVEMENTS**  
 ARMINGTON, ILLINOIS

**R**  
 Randolph & Associates, Inc.  
 Consulting Engineers  
 Land Surveyors  
 911 Pioneer Parkway Pacific, IL 61815  
 tel: 309-693-6344 fax: 309-693-6650  
 www.randolphinc.com  
 IL Design Firm Reg. # 184-021317

DESIGNED BY	E. THOMAS
DRAWN BY	E. THOMAS
APPROVED BY	R. BRADLE
SCALE	1" = 20'
DATE	5, APR. 2007
PROJECT NO.	0773.016
DATE PLOTTED	4/26/07

R-3