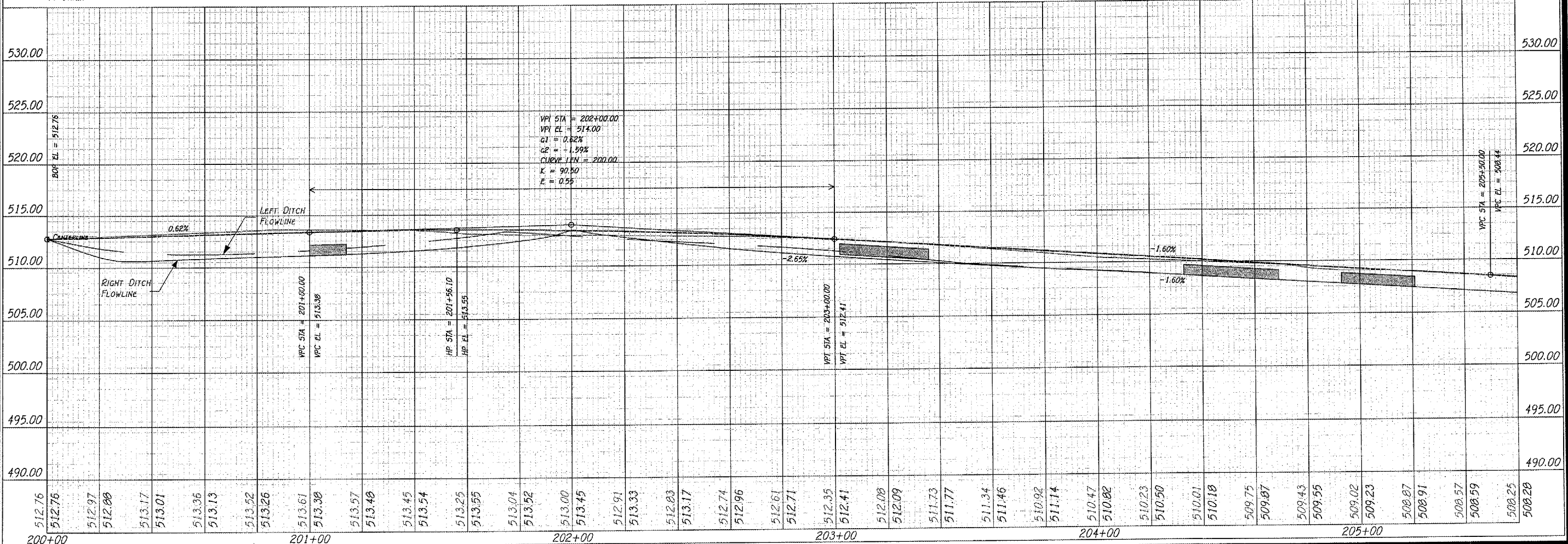
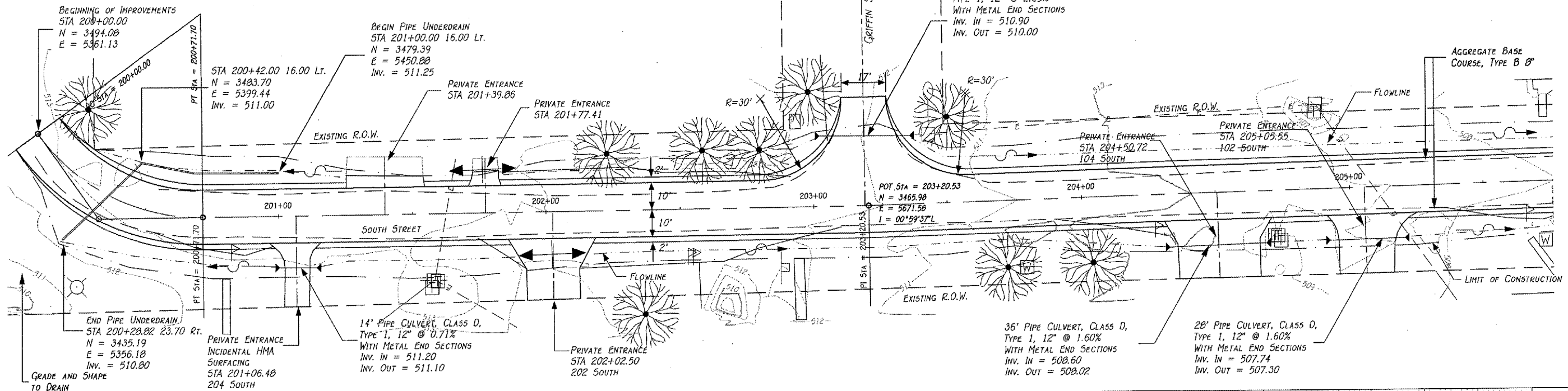


SCALES:
1" = 20' HOR
1" = 5' VER
SCALE: 1" = 20'

PI STA = 200+30.05
N = 3452.60
E = 5383.91
I = 54°45'23"L
DA = 76°23'40"
DC = 83°37'14"
T = 38.05
R = 75.00
L = 71.70
C = 69.00
E = 9.47
M = 8.41



NO.	DATE	REVISIONS

PLAN & PROFILE
STREET IMPROVEMENTS
ARMINGTON, ILLINOIS

R
Randolph & Associates, Inc.
Consulting Engineers
Land Surveyors
511 Pioneer Parkway, Peoria, IL 61615
Tel: 309-693-4514 Fax: 309-693-9555
www.randolphinc.com
IL Design Firm Reg. # 184-010117

DRAWN BY: E. THOMAS
DESIGNED BY: E. THOMAS
APPROVED BY: R. BRADLE
SCALE:

DATE: 5. Apr. 2007
PROJECT NO: 0773-016
DRAWING: PP-4

\\Projects\0773\773-016\Cadd\RCP01002.dwg, Layout 1, 4/26/2007 10:26:13 AM, Thomas, E, 1:2