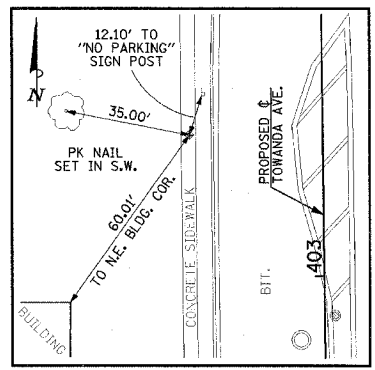
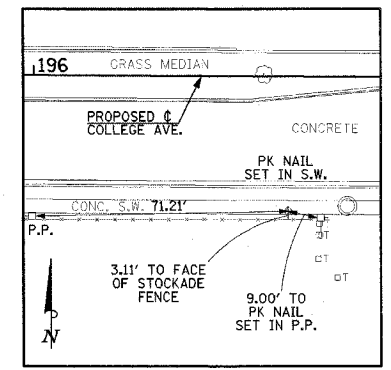


TIES TO CONTROL POINT "DC1"
LOCAL COORDINATES:
N 5000.000
E 10000.000



TIES TO CONTROL POINT "DC2"
LOCAL COORDINATES:
N 5295.131
E 10000.000



TIES TO CONTROL POINT "DC3"
LOCAL COORDINATES:
N 4920.154
E 9711.693

P.O.L. (NOT SHOWN)
405+00.00
N 5456.214
E 10035.788

**END IMPROVEMENTS
TOWANDA AVE.
STA. 404+16.55
(MATCH EXISTING)**

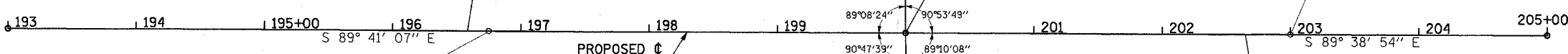
- LEGEND**
- EXISTING R.O.W. LINE
 - - - PROPERTY LINE
 - PROPOSED R.O.W. LINE
 - - - PROPOSED TEMPORARY CONSTRUCTION EASEMENT LINE

PROPOSED RIGHT-OF-WAY STATIONS AND OFFSETS

1	196+84.51	40.06' RT.
2	198+14.44	52.12' RT.
3	199+11.41	52.17' RT.
4	199+42.95	70.12' RT.
5	398+99.24	39.92' LT.
6	199+07.64	39.83' LT.
7	199+39.64	58.48' LT.
8	401+01.38	40.00' LT.
9	400+89.61	40.00' RT.
10	200+57.07	59.00' LT.
11	200+98.59	39.84' LT.
12	396+58.92	39.84' RT.
13	398+06.16	51.98' RT.
14	399+08.52	52.09' RT.
15	200+71.33	58.47' RT.
16	200+95.03	40.16' RT.

TEMPORARY CONSTRUCTION EASEMENT STATIONS AND OFFSETS

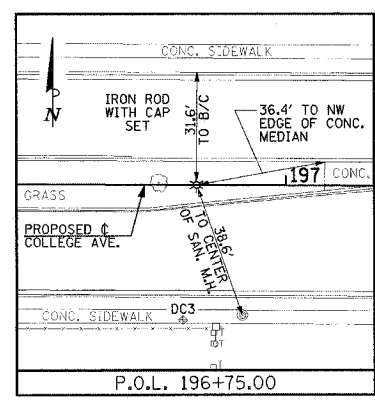
100	196+79.91	63.00' RT.
101	197+79.00	63.00' RT.
102	197+79.00	87.00' RT.
103	198+23.00	87.00' RT.
104	198+23.00	63.00' RT.
105	199+11.40	63.00' RT.
106	398+89.00	50.00' LT.
107	398+89.00	39.93' LT.
108	198+88.00	39.84' LT.
109	198+88.00	62.00' LT.
110	401+11.00	57.00' LT.
111	401+11.00	40.00' LT.
112	400+99.60	40.00' RT.
113	200+98.59	39.84' LT.
114	201+96.00	39.85' LT.
115	201+96.00	54.00' LT.
116	202+52.00	54.00' LT.
117	202+52.00	39.86' LT.
118	396+58.92	39.84' RT.
119	396+58.92	81.00' RT.
120	399+08.00	81.00' RT.
121	399+08.00	114.68' RT.
122	201+16.00	40.16' RT.



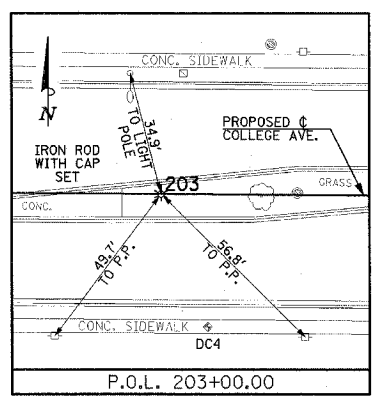
**BEGIN IMPROVEMENTS
COLLEGE AVE.
STA. 196+58.28
(MATCH EXISTING)**

STA. 200+00.00 (C COLLEGE AVE.)
STA. 400+00.00 (C TOWANDA AVE.)
C-C INT.
N 4956.241
E 10040.547

P.O.L.
203+00.00
N 4954.399
E 10340.541



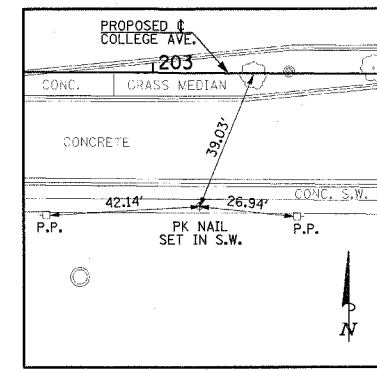
P.O.L. 196+75.00



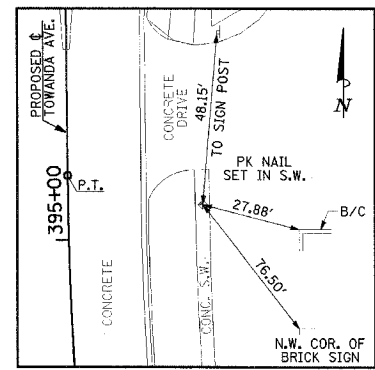
P.O.L. 203+00.00

PROP. CURVE TOWANDA-1
PI STA. = 394+57.16
 $\Delta = 6^\circ 59' 00''$ (RT)
D = 5° 43' 46"
R = 1,000.00'
T = 61.02'
L = 121.88'
E = 1.86'
P.C. STA = 393+96.15
P.T. STA = 395+18.03

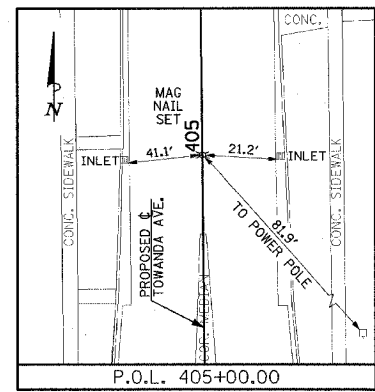
**END IMPROVEMENTS
COLLEGE AVE.
STA. 202+64.90
(MATCH EXISTING)**



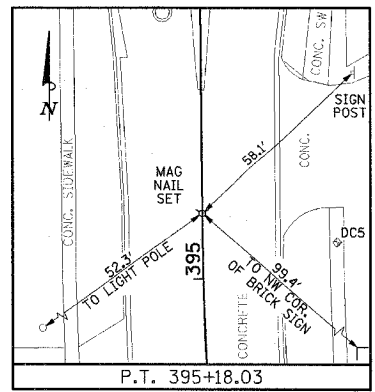
TIES TO CONTROL POINT "DC4"
LOCAL COORDINATES:
N 4917.101
E 10353.579



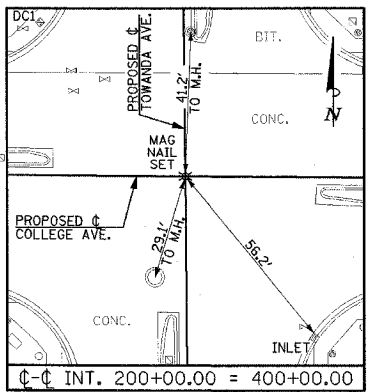
TIES TO CONTROL POINT "DC5"
LOCAL COORDINATES:
N 4466.238
E 10082.359



P.O.L. 405+00.00



P.T. 395+18.03



C-C INT. 200+00.00 = 400+00.00

**BEGIN IMPROVEMENTS
TOWANDA AVE.
STA. 395+53.26
(MATCH EXISTING)**

P.T.
395+18.03
N 4474.285
E 10044.580

P.I.
394+57.16
N 4413.269
E 10045.091

P.C. (NOT SHOWN)
393+96.15
N 4352.769
E 10053.016

ILLINOIS DEPARTMENT OF TRANSPORTATION
**HORIZONTAL ALIGNMENT LAYOUT
AND CONTROL**

DATE: 3-07
DRAWN BY: S.M.W.
CHECKED BY: J.T.P.