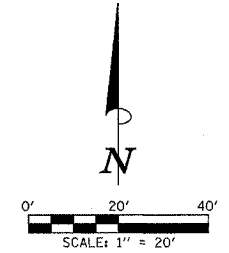


LOCATION	PAVEMENT REM (SQ YD)	DRIVE PAVEMENT REM (SQ YD)	SIDEWALK REM (SQ FT)	COMBO CURB GUTTER REM (FOOT)	MEDIAN REM (SQ FT)
196+58.3 RT. TO 398+89.2 LT.				379.0	
196+83.3 RT. TO 398+89.2 LT.			1396.1		
198+01.0 RT. - C.E.		136.8			
198+87.6 LT. TO 404+16.6 LT.				453.0	
198+97.6 LT. TO 401+01.4 LT.			499.1		
199+41.3 LT. TO 199+61.6 LT.				43.5	57.2
399+29.2 LT. TO 399+61.1 LT.				67.0	94.6
400+39.4 RT. TO 400+64.2 RT.				53.1	69.6
200+38.4 RT. TO 200+64.6 RT.				55.2	72.6
400+99.6 RT. TO 202+64.9 LT.				291.3	
400+99.6 RT. TO 202+98.6 LT.				475.4	
201+98.2 LT. TO 202+49.2 LT.			206.4		
202+24.31 LT. - C.E.		62.2			
396+47.7 RT. TO 201+13.3 RT.				389.7	
396+67.1 RT. TO 201+13.3 RT.			1423.5		
399+01.2 RT. TO 201+05.2 RT.	108.1*			154.2*	

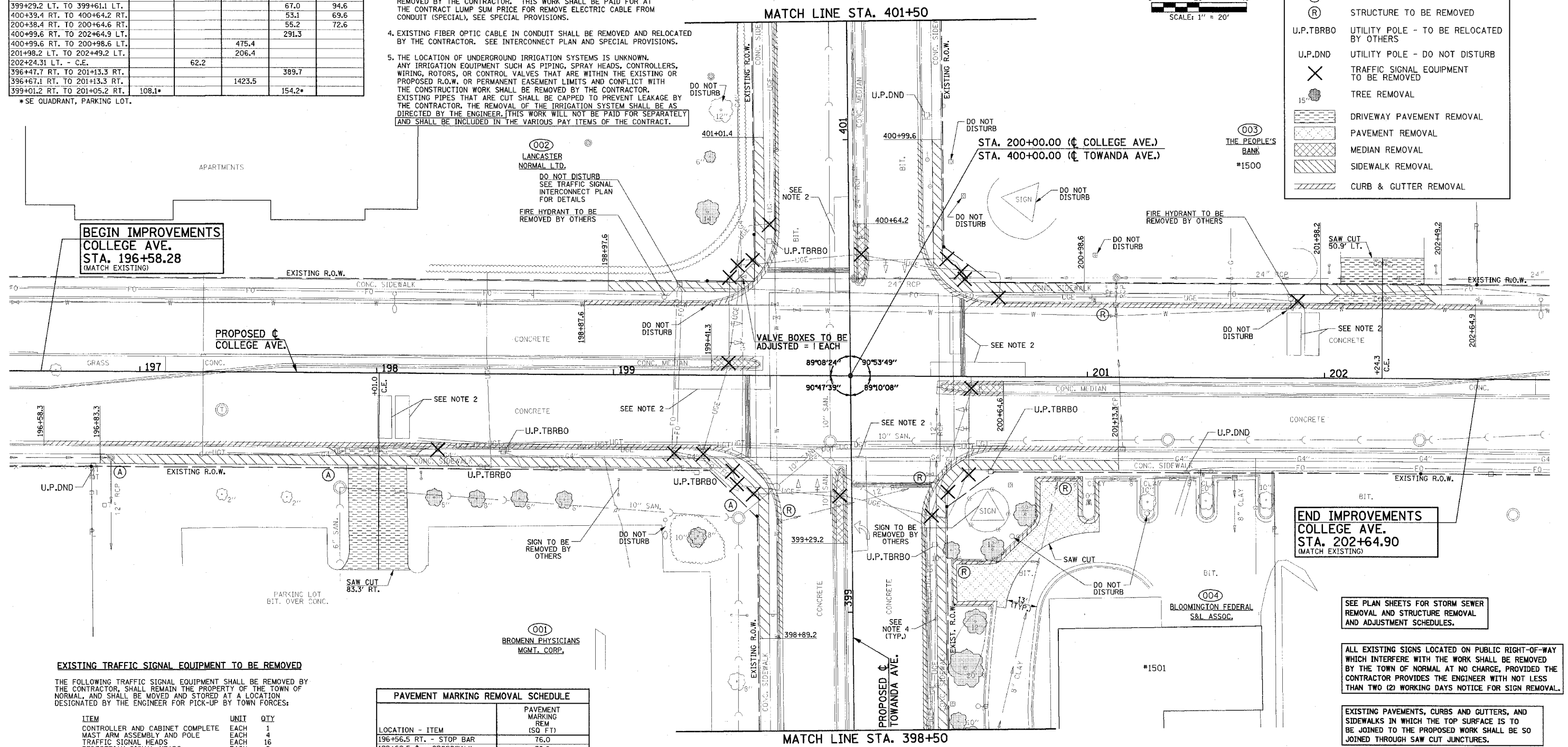
* SE QUADRANT, PARKING LOT.

REMOVAL AND RELOCATION NOTES:

- THE CONTRACTOR WILL BE REQUIRED TO SAW CUT AND REMOVE THE EXISTING PAVEMENT AS DIRECTED BY THE ENGINEER AND AS SHOWN ON THE TYPICAL SECTION TO PROVIDE A CLEAN VERTICAL EDGE IF NO LONGITUDINAL JOINT IS VISIBLE. THE SAW CUTTING OF THE PAVEMENT WILL NOT BE PAID FOR SEPARATELY BUT SHALL BE INCLUDED IN THE CONTRACT UNIT PRICE OF THE VARIOUS REMOVAL PAY ITEMS.
- EXISTING TRAFFIC SIGNAL DETECTOR LOOPS SHALL BE DISABLED AND ABANDONED BY THE CONTRACTOR. SEE SPECIAL PROVISIONS.
- EXISTING TRAFFIC SIGNAL ELECTRIC CABLE IN CONDUIT SHALL BE REMOVED BY THE CONTRACTOR. THIS WORK SHALL BE PAID FOR AT THE CONTRACT LUMP SUM PRICE FOR REMOVE ELECTRIC CABLE FROM CONDUIT (SPECIAL), SEE SPECIAL PROVISIONS.
- EXISTING FIBER OPTIC CABLE IN CONDUIT SHALL BE REMOVED AND RELOCATED BY THE CONTRACTOR. SEE INTERCONNECT PLAN AND SPECIAL PROVISIONS.
- THE LOCATION OF UNDERGROUND IRRIGATION SYSTEMS IS UNKNOWN. ANY IRRIGATION EQUIPMENT SUCH AS PIPING, SPRAY HEADS, CONTROLLERS, WIRING, ROTORS, OR CONTROL VALVES THAT ARE WITHIN THE EXISTING OR PROPOSED R.O.W. OR PERMANENT EASEMENT LIMITS AND CONFLICT WITH THE CONSTRUCTION WORK SHALL BE REMOVED BY THE CONTRACTOR. EXISTING PIPES THAT ARE CUT SHALL BE CAPPED TO PREVENT LEAKAGE BY THE CONTRACTOR. THE REMOVAL OF THE IRRIGATION SYSTEM SHALL BE AS DIRECTED BY THE ENGINEER. THIS WORK WILL NOT BE PAID FOR SEPARATELY AND SHALL BE INCLUDED IN THE VARIOUS PAY ITEMS OF THE CONTRACT.



(A)	STRUCTURE TO BE ADJUSTED
(R)	STRUCTURE TO BE REMOVED
U.P.TBRBO	UTILITY POLE - TO BE RELOCATED BY OTHERS
U.P.DND	UTILITY POLE - DO NOT DISTURB
X	TRAFFIC SIGNAL EQUIPMENT TO BE REMOVED
15'	TREE REMOVAL
(Hatched pattern)	DRIVEWAY PAVEMENT REMOVAL
(Diagonal lines pattern)	PAVEMENT REMOVAL
(Cross-hatch pattern)	MEDIAN REMOVAL
(Vertical lines pattern)	SIDEWALK REMOVAL
(Horizontal lines pattern)	CURB & GUTTER REMOVAL



BEGIN IMPROVEMENTS
COLLEGE AVE.
STA. 196+58.28
(MATCH EXISTING)

END IMPROVEMENTS
COLLEGE AVE.
STA. 202+64.90
(MATCH EXISTING)

EXISTING TRAFFIC SIGNAL EQUIPMENT TO BE REMOVED

THE FOLLOWING TRAFFIC SIGNAL EQUIPMENT SHALL BE REMOVED BY THE CONTRACTOR, SHALL REMAIN THE PROPERTY OF THE TOWN OF NORMAL, AND SHALL BE MOVED AND STORED AT A LOCATION DESIGNATED BY THE ENGINEER FOR PICK-UP BY TOWN FORCES:

ITEM	UNIT	QTY
CONTROLLER AND CABINET COMPLETE	EACH	1
MAST ARM ASSEMBLY AND POLE	EACH	4
TRAFFIC SIGNAL HEADS	EACH	16
PEDESTRIAN SIGNAL HEADS	EACH	8

THE FOLLOWING TRAFFIC SIGNAL EQUIPMENT SHALL BE REMOVED BY THE CONTRACTOR AND DISPOSED OF PER THE RESPECTIVE CONTRACT PAY ITEMS:

ITEM	UNIT	QTY
CONCRETE FOUNDATION	EACH	9
HANDHOLES	EACH	11
JUNCTION BOXES	EACH	4
ELECTRIC CABLE (SEE NOTES 3 AND 4)	L SUM	1

PAVEMENT MARKING REMOVAL SCHEDULE

LOCATION - ITEM	PAVEMENT MARKING REM (SQ FT)
196+56.5 RT. - STOP BAR	76.0
199+60.5 C - CROSSWALK	38.0
199+66.5 C - CROSSWALK	35.5
200+38.0 C - CROSSWALK	35.5
200+44.0 C - CROSSWALK	35.0
200+47.5 LT. - STOP BAR	66.0
399+31.7 - LT. TURN ARROW	15.6
399+54 RT. - STOP BAR	68.0
399+57.5 C - CROSSWALK	36.5
399+63.5 C - CROSSWALK	36.0
400+35.5 C - CROSSWALK	36.0
400+41.5 C - CROSSWALK	37.0
400+44.5 LT. - STOP BAR	70.0

TREE REMOVAL (6 TO 15 UNITS DIAMETER)

STATION	OFFSET	UNIT	STATION	OFFSET	UNIT
198+24.4	52.3' RT.	8	400+93.3	58.3' LT.	6
198+42.4	52.7' RT.	8	398+53.7	44.0' RT.	10
198+60.4	52.5' RT.	6	398+95.7	51.6' RT.	12
198+79.3	52.9' RT.	6	200+42.9	73.6' RT.	10
199+34.9	69.2' RT.	10	200+60.3	73.1' RT.	12
199+35.8	68.1' RT.	8	200+74.2	58.1' RT.	12
400+69.9	59.6' LT.	14	201+00.7	52.9' RT.	STUMP

TREE REMOVAL (OVER 15 UNITS DIAMETER)

STATION	OFFSET	UNIT
398+76.1	47.3' RT.	20

SEE PLAN SHEETS FOR STORM SEWER REMOVAL AND STRUCTURE REMOVAL AND ADJUSTMENT SCHEDULES.

ALL EXISTING SIGNS LOCATED ON PUBLIC RIGHT-OF-WAY WHICH INTERFERE WITH THE WORK SHALL BE REMOVED BY THE TOWN OF NORMAL AT NO CHARGE, PROVIDED THE CONTRACTOR PROVIDES THE ENGINEER WITH NOT LESS THAN TWO (2) WORKING DAYS NOTICE FOR SIGN REMOVAL.

EXISTING PAVEMENTS, CURBS AND GUTTERS, AND SIDEWALKS IN WHICH THE TOP SURFACE IS TO BE JOINED TO THE PROPOSED WORK SHALL BE SO JOINED THROUGH SAW CUT JUNCTURES.

ILLINOIS DEPARTMENT OF TRANSPORTATION

REMOVALS AND RELOCATIONS PLAN

DATE: 3-07
DRAWN BY: S.M.W.
CHECKED BY: J.T.P.

SCALE: 1"=20'