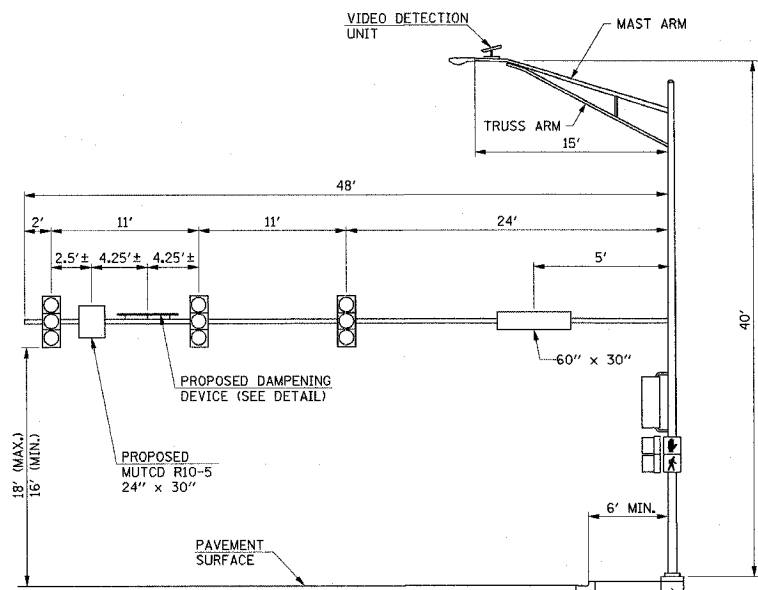


F.A.U. RTE. 6352 6412	SECTION 02-00218-00-SP	COUNTY MCLEAN	TOTAL SHEETS 35	SHEET NO. 20
STA. _____		TO STA. _____		
ILLINOIS FED. AID PROJECT				

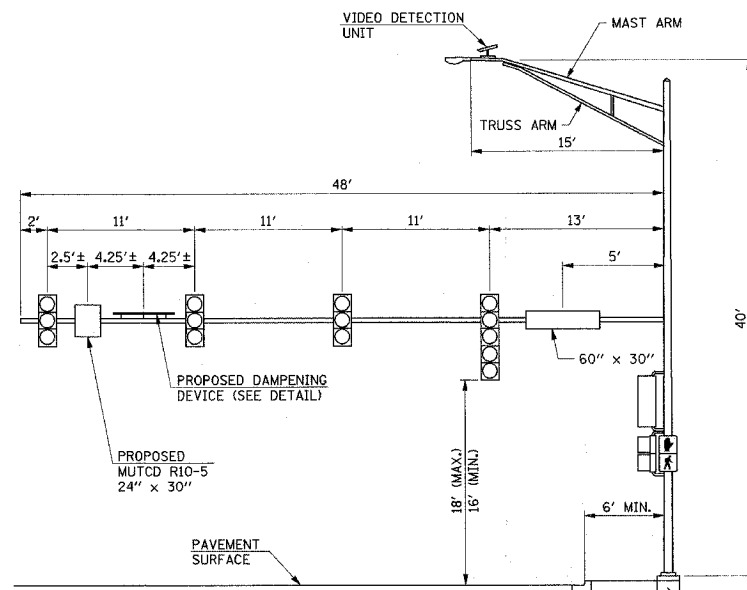
CONTRACT NO. 91363



MAST ARM LOADING DIAGRAM
NO SCALE

COLLEGE AVENUE/TOWANDA AVENUE INTERSECTION
NORTHWEST QUADRANT

TYPE E FOUNDATION
DIAMETER = 36"
DEPTH = 13'
REFER TO STD. 878001 FOR
HEIGHT ABOVE FINISH GRADE



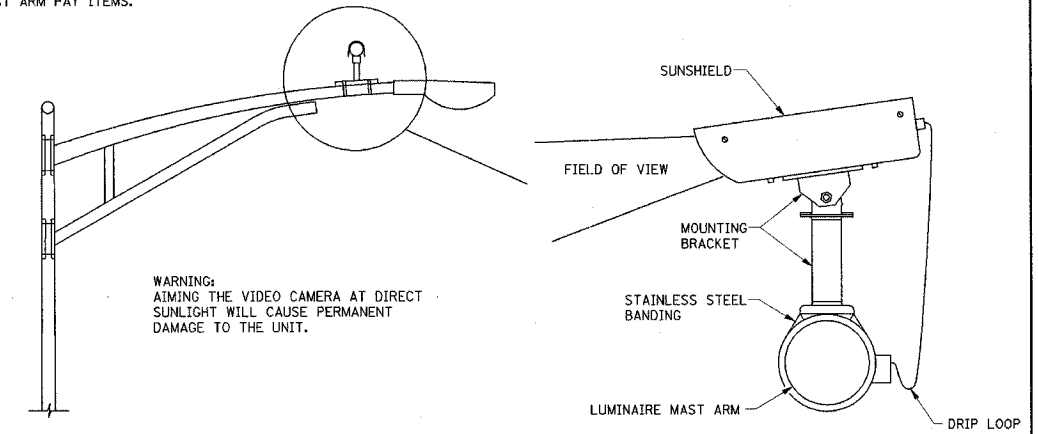
MAST ARM LOADING DIAGRAM
NO SCALE

COLLEGE AVENUE/TOWANDA AVENUE INTERSECTION
NORTHEAST QUADRANT

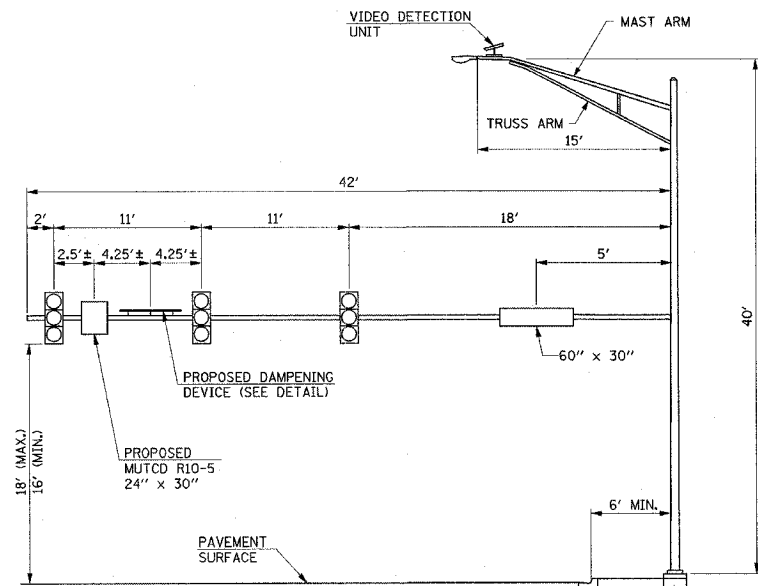
TYPE E FOUNDATION
DIAMETER = 36"
DEPTH = 13'
REFER TO STD. 878001 FOR
HEIGHT ABOVE FINISH GRADE

MAST ARM LOADING NOTES

1. ALL SIGNAL HEADS SHALL HAVE BACKPLATES.
2. THE DAMPENING DEVICE SHALL CONSIST OF A 66" x 36" TYPE 1 UNPAINTED ALUMINUM SIGN STOCK MOUNTED AS SHOWN IN THE DETAILS. THE COST OF THE DAMPENING DEVICE SHALL BE CONSIDERED INCLUDED IN THE CONTRACT UNIT PRICE OF THE VARIOUS MAST ARM PAY ITEMS.



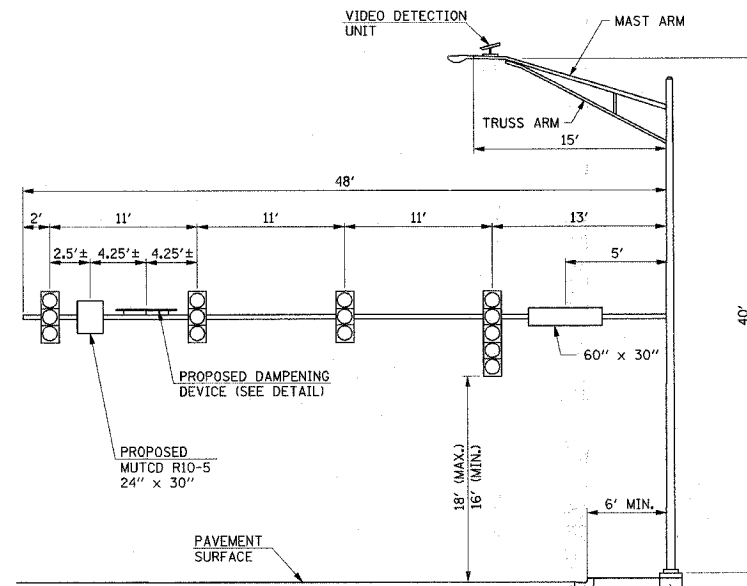
VIDEO DETECTION UNIT MOUNTING DETAILS
NO SCALE



MAST ARM LOADING DIAGRAM
NO SCALE

COLLEGE AVENUE/TOWANDA AVENUE INTERSECTION
SOUTHWEST QUADRANT

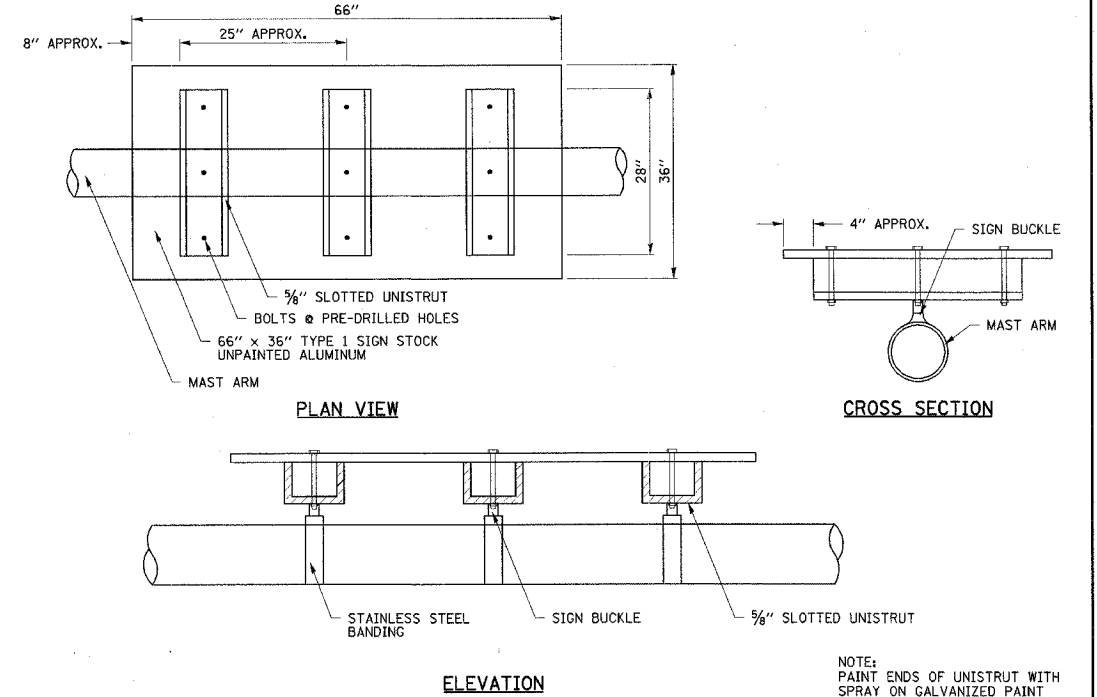
TYPE E FOUNDATION
DIAMETER = 36"
DEPTH = 13'
REFER TO STD. 878001 FOR
HEIGHT ABOVE FINISH GRADE



MAST ARM LOADING DIAGRAM
NO SCALE

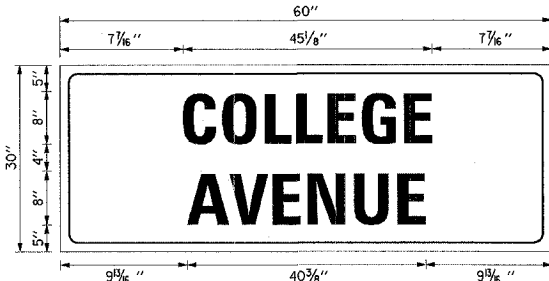
COLLEGE AVENUE/TOWANDA AVENUE INTERSECTION
SOUTHEAST QUADRANT

TYPE E FOUNDATION
DIAMETER = 36"
DEPTH = 13'
REFER TO STD. 878001 FOR
HEIGHT ABOVE FINISH GRADE

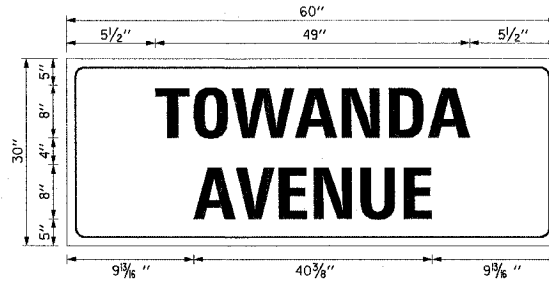


MAST ARM MOUNTED DAMPENING DEVICE DETAILS
NO SCALE

NOTE:
PAINT ENDS OF UNISTRUT WITH
SPRAY ON GALVANIZED PAINT

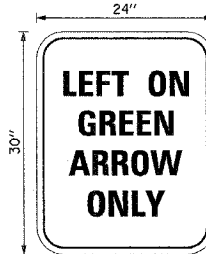


MAST ARM MOUNTED STREET NAME SIGN DETAILS
NO SCALE

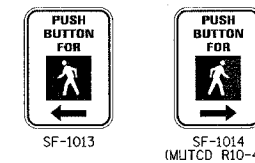


- STREET NAME SIGN NOTES:**
1. SERIES D-8" LETTERING REQUIRED.
 2. TYPE A SHEETING REQUIRED.
 3. 0.8 INCH BORDER, WHITE REQUIRED.
 4. STREET NAME SIGNS MOUNTED ON MAST ARMS SHALL HAVE THREE BRACKETS.

A 24" x 30" ALUMINUM (R10-5) LEFT ON GREEN ARROW ONLY SIGN SHALL BE MOUNTED BELOW EACH 3-SECTION BRACKET MOUNTED SIGNAL HEAD AS DIRECTED BY THE ENGINEER.



MAST ARM MOUNTED SIGN DETAILS
NO SCALE



PEDESTRIAN PUSH-BUTTON SIGN DETAIL
NO SCALE

PEDESTRIAN PUSH-BUTTON SIGN SHALL BE MOUNTED ABOVE EACH PEDESTRIAN PUSH-BUTTON. THE SIGN SHALL BE ACCORDING TO SECTION 888 OF THE STANDARD SPECIFICATIONS AND SHALL BE INCLUDED IN THE COST OF THE PEDESTRIAN PUSH-BUTTON.
ALL PEDESTRIAN PUSH-BUTTON SIGNS SHALL BE ALUMINUM BLANKS WITH SHEETING. PAINTED STEEL WILL NOT BE ALLOWED.

ILLINOIS DEPARTMENT OF TRANSPORTATION

TRAFFIC SIGNAL PLANS
TRAFFIC SIGNAL DETAILS

SCALE : NONE
DATE : 3-07
DRAWN BY : S.M.W.
CHECKED BY : J.T.P.