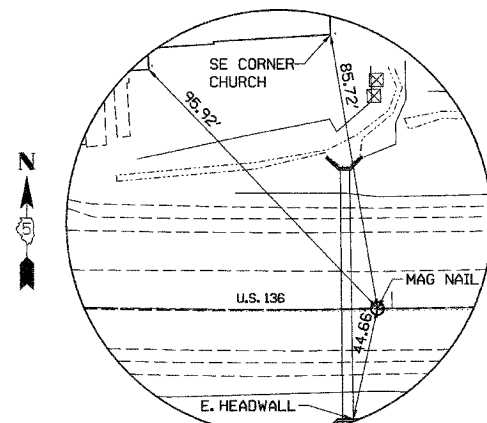
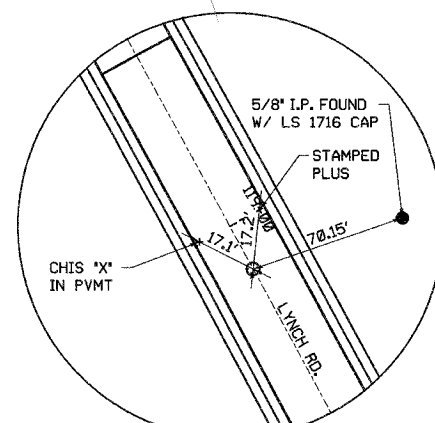


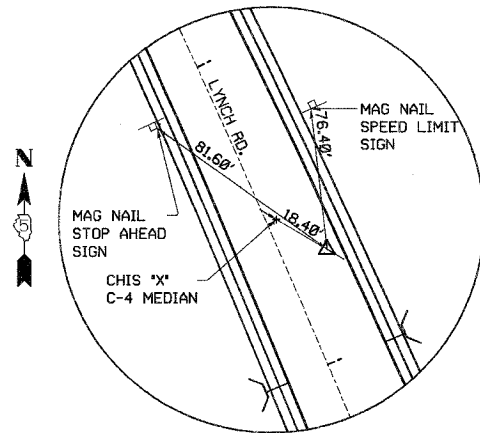
RTE.	PROJECT NO.	COUNTY	TOTAL SHEETS	SHEET NO.
• 05-00218-00-PV	VERMILION	57	15	
STA. 00+00.00 TO STA. 335+39.18				
*F.A.P. 729 & F.A.U. 6999 CONTRACT NO. 91367				



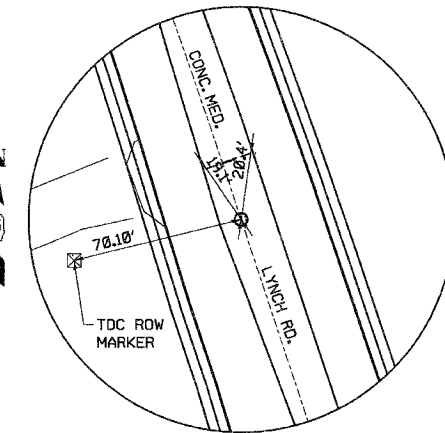
PT STATION 57+95.55
MAG NAIL



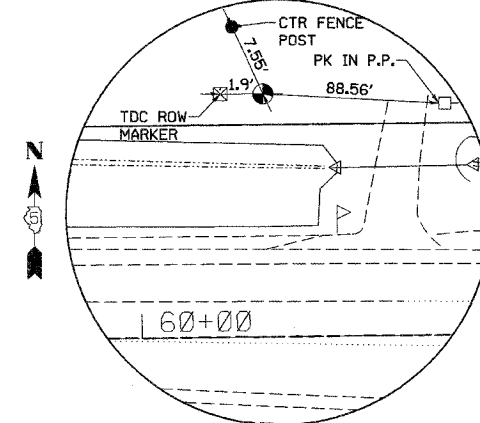
PC STATION 119+14.95
MAG SET



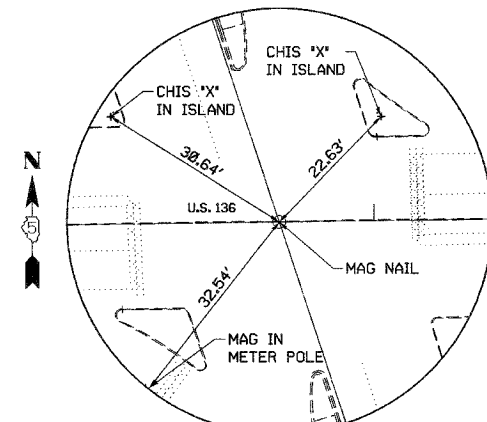
PI STATION 122+67.62
IP W/CAP



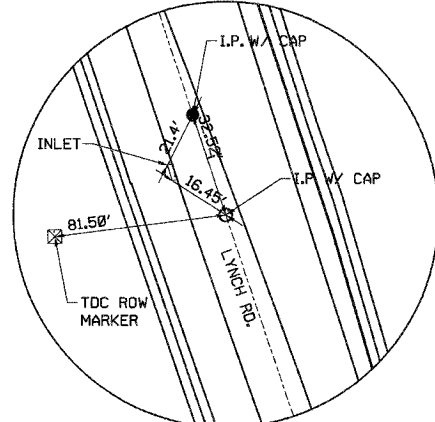
PT STATION 126+18.34
IP W/CAP



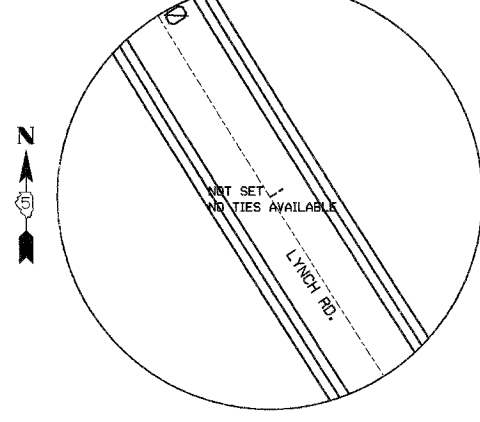
REFERENCE
N 1263450.504, E 1201025.273
ELEV 645.361
ROD IN VAULT



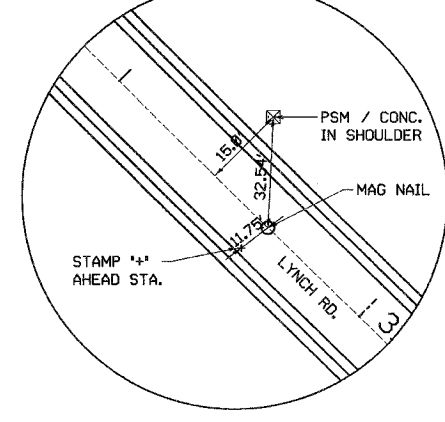
INTERSECT STATION 72+70.75 U.S. 136
129+70.02 LYNCH RD. N.
279+15.41 LYNCH RD. S.
MAG NAIL



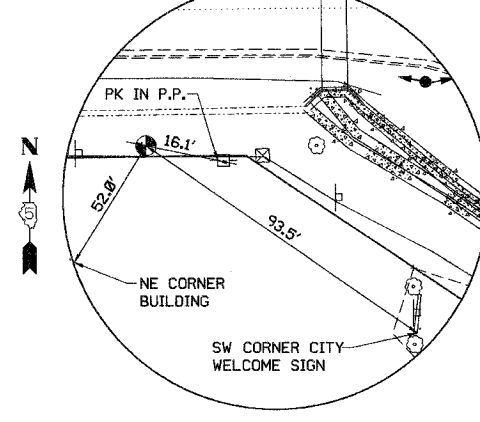
PC STATION 282+18.35
IP W/CAP



PI STATION 296+18.26
N/A



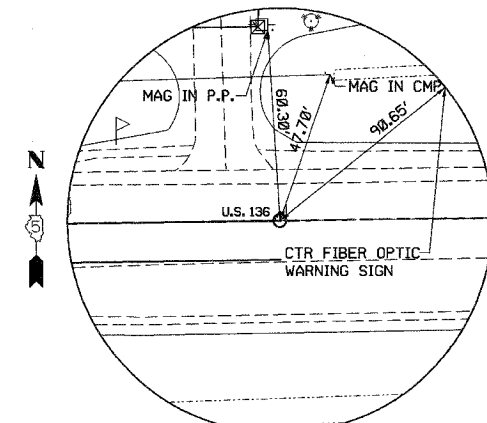
PT STATION 309+64.37
MAG NAIL



CONTROL VER14C
N 1263322.569, E 1202572.813
ELEV 648.041
ROD IN VAULT

BENCH MARKS

MARK NO.	DESCRIPTION	ELEVATION
BM #1	IN THE NW QUADRANT OF INTERSECTION OF U.S.136 & LYNCH RD. MARK IS CHISELED SQUARE ON THE TOP OF THE N. CONC. HEADWALL ON ARBC. STA. 71+04.47, 63.9' RT.	646.46
BM #2	FROM INTERSECTION OF U.S. 136 & LYNCH RD. SOUTH 0.14 MILE TO CHISELED SQUARE ON W. CONC. HEADWALL OF ARBC. STA. 286+00, 41.4' LT.	651.46
BM #3	FROM INTERSECTION OF U.S. 136 & LYNCH RD. NORTH TO CHISELED SQUARE ON EAST HEADWALL OF ARBC. STA. 124+75.4, 44.3 LT.	645.30
BM #4	FROM INTERSECTION OF U.S. 136 & LYNCH RD. NORTH 0.28 MILE TO BOLT ON THE TOP FLANGE BETWEEN THE 'E' & 'L' OF MUELLER, 300' S. OF LYNCH CREEK DR. STA. 114+93.74, 88.4' LT.	652.05
BM #5	FROM INTERSECTION OF U.S. 136 & LYNCH RD. EAST 0.12 MILE TO CHISELED SQUARE ON THE TOP OF THE S. CONC. HEADWALL ON ARBC. STA. 79+05.82, 39.5' RT.	647.42
BM #6	FROM INTERSECTION OF U.S. 136 & LYNCH RD. EAST 0.37 MILE TO THE IP/ALUM CAP 40' WNW OF A GAS VENT PIPE. STA. 92+07.66, 59.8' RT.	649.40
BM #7	FROM INTERSECTION OF U.S. 136 & LYNCH RD. EAST 0.68 MILE TO CHISELED SQUARE ON THE W. CURB OF THE W. ENTRANCE TO DANVILLE CORRECTIONAL CENTER. STA. 108+96.72, 21.9' RT.	652.58



PC 80+97.95
MAG NAIL

X:\Projects\Cty\Current\05010215-Lynch Spurr\C.vil\DGN\TIE001.dgn

City of Danville
 CITY OF DANVILLE, IL
 DEPARTMENT OF ENGINEERING
 REVISIONS
 NAME _____ DATE _____

DEPARTMENT OF ENGINEERING
 DANVILLE, IL R. DAVID SCHNELLE, CITY ENGINEER
 LYNCH ROAD IMPROVEMENT
 TIES & BENCHMARKS
 SCALE: NA
 DATE: 3/12/2007
 DRAWN BY: JPH
 CHECKED BY: RDS