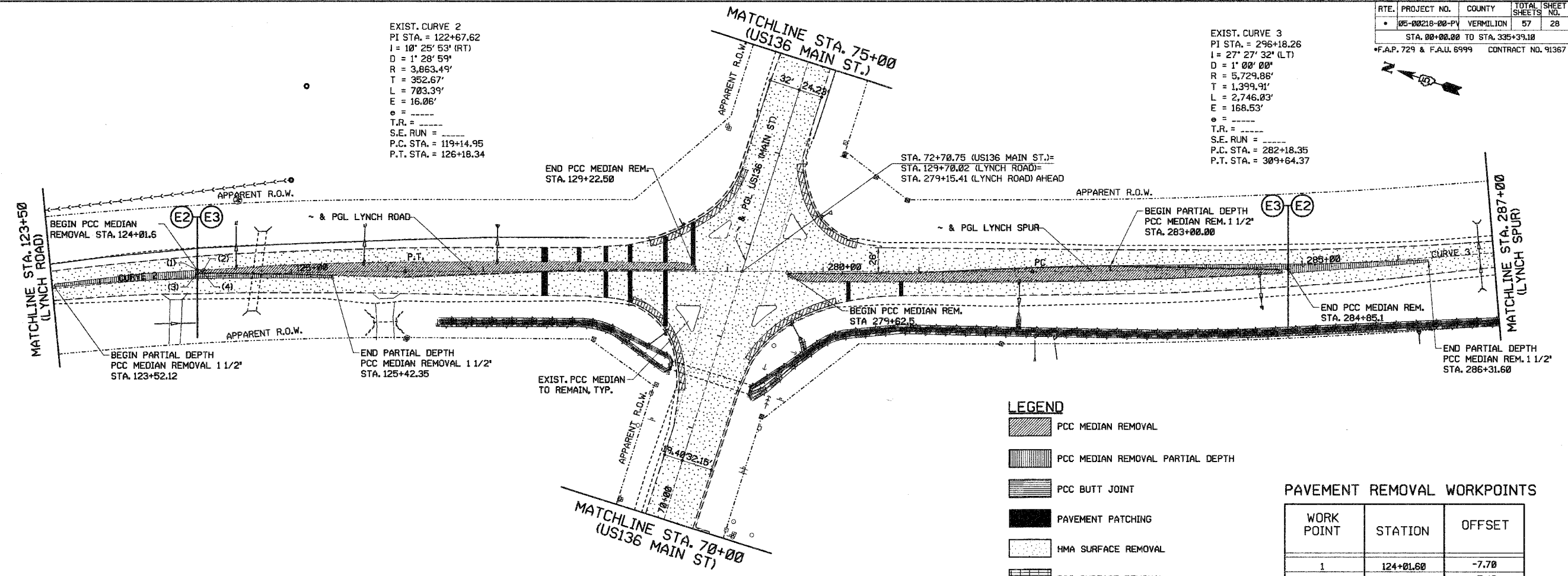


RTE.	PROJECT NO.	COUNTY	TOTAL SHEETS	SHEET NO.
05-00218-00-PV	VERMILION	57	28	
STA. 00+00.00 TO STA. 335+39.18				
*F.A.P. 729 & F.A.U. 6999 CONTRACT NO. 91367				

EXIST. CURVE 2  
 PI STA. = 122+67.62  
 I = 10° 25' 53" (RT)  
 D = 1' 28' 59"  
 R = 3,863.49'  
 T = 352.67'  
 L = 703.39'  
 E = 16.06'  
 e = -----  
 T.R. = -----  
 S.E. RUN = -----  
 P.C. STA. = 119+14.95  
 P.T. STA. = 126+18.34

EXIST. CURVE 3  
 PI STA. = 296+18.26  
 I = 27° 27' 32" (LT)  
 D = 1' 00' 00"  
 R = 5,729.86'  
 T = 1,399.91'  
 L = 2,746.03'  
 E = 168.53'  
 e = -----  
 T.R. = -----  
 S.E. RUN = -----  
 P.C. STA. = 282+18.35  
 P.T. STA. = 309+64.37



**LEGEND**

- PCC MEDIAN REMOVAL
- PCC MEDIAN REMOVAL PARTIAL DEPTH
- PCC BUTT JOINT
- PAVEMENT PATCHING
- HMA SURFACE REMOVAL
- PCC SURFACE REMOVAL

**PAVEMENT REMOVAL WORKPOINTS**

WORK POINT	STATION	OFFSET
1	124+01.60	-7.70
2	124+08.74	-7.40
3	124+01.60	-3.70
4	124+08.49	-3.31

**\*CONCRETE MEDIAN SURFACE REMOVAL SCHEDULE**

FROM STATION	TO STATION	AREA (SY)
123+52.12	125+42.35	1427.1
283+00.00	286+31.60	1357.1
<b>PROJECT TOTAL:</b>		<b>2784.2</b>

**MEDIAN REMOVAL (SPECIAL) SCHEDULE**

FROM STATION	TO STATION	AREA (SF)
124+01.60	129+22.50	5882.2
279+62.89	284+78.91	5964.4
<b>PROJECT TOTAL:</b>		<b>11846.6</b>

**PAVEMENT REMOVAL SCHEDULE**

STATION	AREA (SY)
129+22.00	4.4
<b>PROJECT TOTAL:</b>	<b>4.4</b>

\*REMOVAL DEPTH OF 1 1/2"

**INLET REMOVAL SCHEDULE (COST INCLUDED WITH MEDIAN REMOVAL SPECIAL)**

STATION	OFFSET LT/RT	EACH
124+42.00	LT.	1.0
125+75.00	LT.	1.0
127+14.00	LT.	1.0
282+06.00	RT.	1.0
284+56.00	RT.	1.0

**NOTES:**

- SEE SCHEDULE SHEETS FOR PAY ITEMS NOT SHOWN.
- PCC SURFACE REMOVAL DEPTH VARIES FROM 3/4" AT EDGE OF PAVEMENT TO 6" AT 6'-3" FROM EDGE OF PAVEMENT.

DEPARTMENT OF ENGINEERING  
 DANVILLE, IL. R. DAVID SCHNELLE, CITY ENGINEER  
 LYNCH ROAD IMPROVEMENT  
 EXISTING REMOVAL PLAN  
 STA. 123+50 TO STA. 287+00  
 SCALE: 1:50  
 DATE: 3/12/2007  
 DRAWN BY: RDS  
 CHECKED BY: MEW

	DATE	
	REVISIONS	
	NAME	

X:\Projects\Cty\Curren\05010215-Lynch\_Spur\Cv1\DSN\REM003.dgn