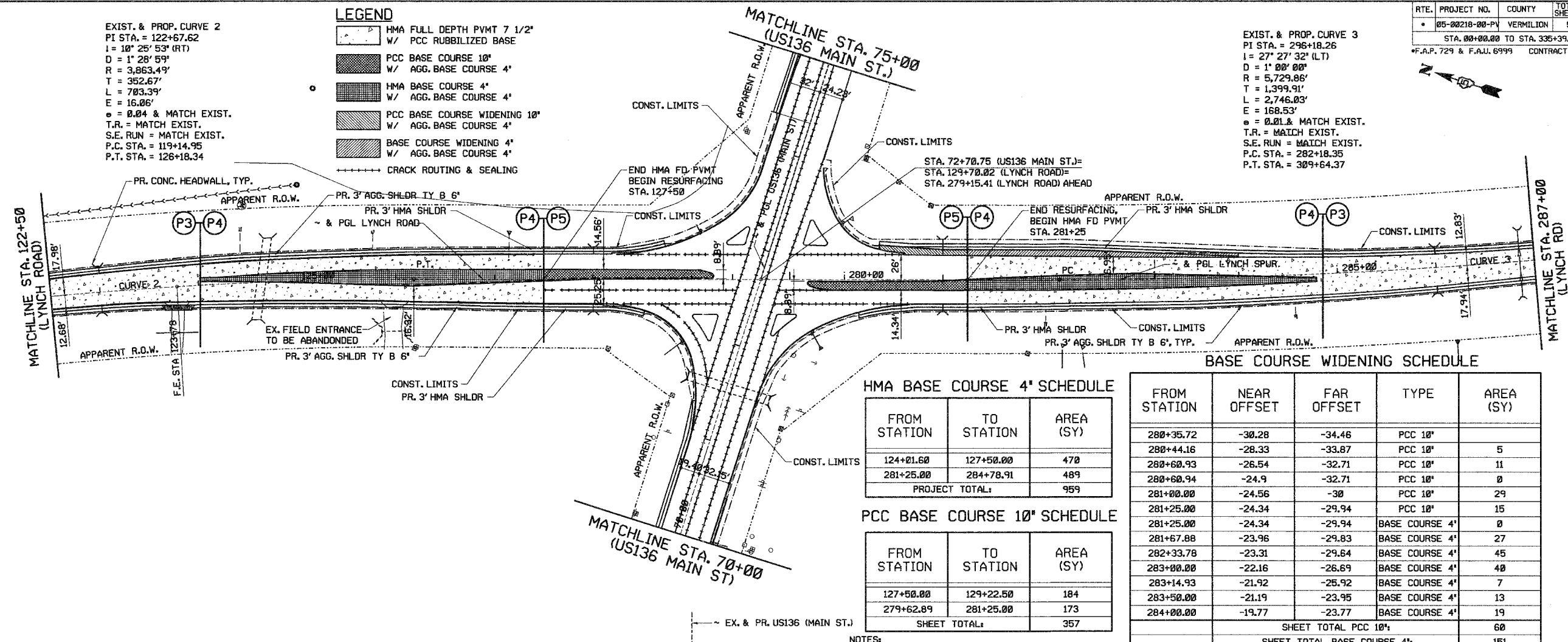


EXIST. & PROP. CURVE 2  
 PI STA. = 122+67.62  
 I = 1° 28' 53" (RT)  
 D = 3,863.49'  
 T = 352.67'  
 L = 783.39'  
 E = 16.06'  
 ○ = 0.04 & MATCH EXIST.  
 T.R. = MATCH EXIST.  
 S.E. RUN = MATCH EXIST.  
 P.C. STA. = 119+14.95  
 P.T. STA. = 126+18.34

**LEGEND**

- ◻ HMA FULL DEPTH PVMT 7 1/2" W/ PCC RUBBLIZED BASE
- ◻ PCC BASE COURSE 10" W/ AGG. BASE COURSE 4"
- ◻ HMA BASE COURSE 4" W/ AGG. BASE COURSE 4"
- ◻ PCC BASE COURSE WIDENING 10" W/ AGG. BASE COURSE 4"
- ◻ BASE COURSE WIDENING 4" W/ AGG. BASE COURSE 4"
- CRACK ROUTING & SEALING

EXIST. & PROP. CURVE 3  
 PI STA. = 296+18.26  
 I = 27° 27' 32" (LT)  
 D = 1' 00' 00"  
 R = 5,729.86'  
 T = 1,399.91'  
 L = 2,746.03'  
 E = 168.53'  
 ○ = 0.01 & MATCH EXIST.  
 T.R. = MATCH EXIST.  
 S.E. RUN = MATCH EXIST.  
 P.C. STA. = 282+18.35  
 P.T. STA. = 309+64.37



**HMA BASE COURSE 4" SCHEDULE**

FROM STATION	TO STATION	AREA (SY)
124+01.60	127+50.00	470
281+25.00	284+78.91	489
<b>PROJECT TOTAL:</b>		<b>959</b>

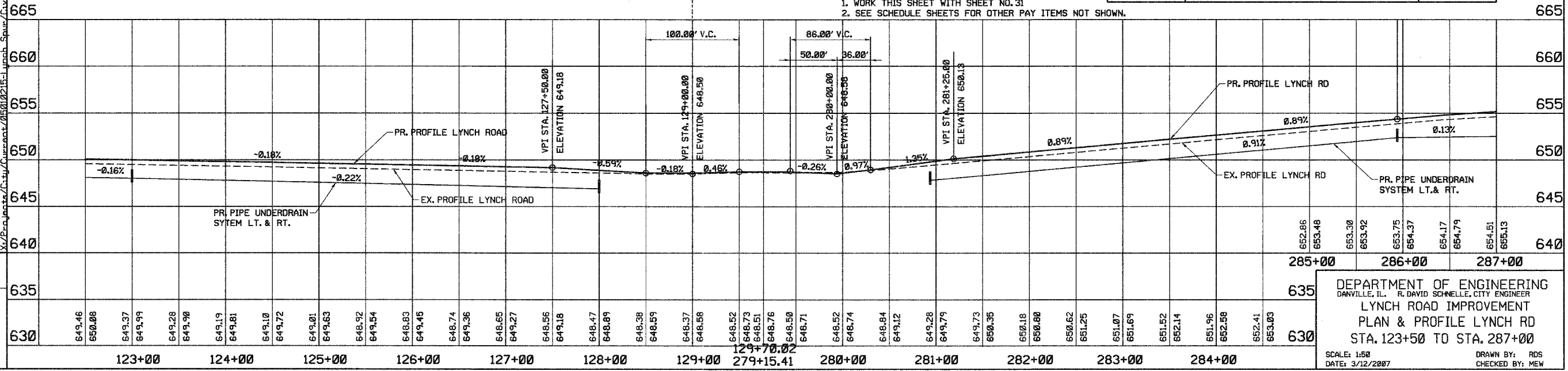
**PCC BASE COURSE 10" SCHEDULE**

FROM STATION	TO STATION	AREA (SY)
127+50.00	129+22.50	184
279+62.89	281+25.00	173
<b>SHEET TOTAL:</b>		<b>357</b>

**BASE COURSE WIDENING SCHEDULE**

FROM STATION	NEAR OFFSET	FAR OFFSET	TYPE	AREA (SY)
280+35.72	-30.28	-34.46	PCC 10"	5
280+44.16	-28.33	-33.87	PCC 10"	5
280+60.93	-26.54	-32.71	PCC 10"	11
280+60.94	-24.9	-32.71	PCC 10"	0
281+00.00	-24.56	-30	PCC 10"	29
281+25.00	-24.34	-29.94	PCC 10"	15
281+25.00	-24.34	-29.94	BASE COURSE 4"	0
281+67.88	-23.96	-29.83	BASE COURSE 4"	27
282+33.78	-23.31	-29.64	BASE COURSE 4"	45
283+00.00	-22.16	-26.69	BASE COURSE 4"	40
283+14.93	-21.92	-25.92	BASE COURSE 4"	7
283+50.00	-21.19	-23.95	BASE COURSE 4"	13
284+00.00	-19.77	-23.77	BASE COURSE 4"	19
<b>SHEET TOTAL PCC 10":</b>				<b>60</b>
<b>SHEET TOTAL BASE COURSE 4":</b>				<b>151</b>

NOTES:  
 1. WORK THIS SHEET WITH SHEET NO. 31  
 2. SEE SCHEDULE SHEETS FOR OTHER PAY ITEMS NOT SHOWN.



**REVISIONS**

NO.	NAME	DATE

DEPARTMENT OF ENGINEERING  
 DANVILLE, ILL. R. DAVID SCHNELLE, CITY ENGINEER  
**LYNCH ROAD IMPROVEMENT**  
**PLAN & PROFILE LYNCH RD**  
**STA. 123+50 TO STA. 287+00**

SCALE: 1:50  
 DATE: 3/12/2007  
 DRAWN BY: RDS  
 CHECKED BY: MEW