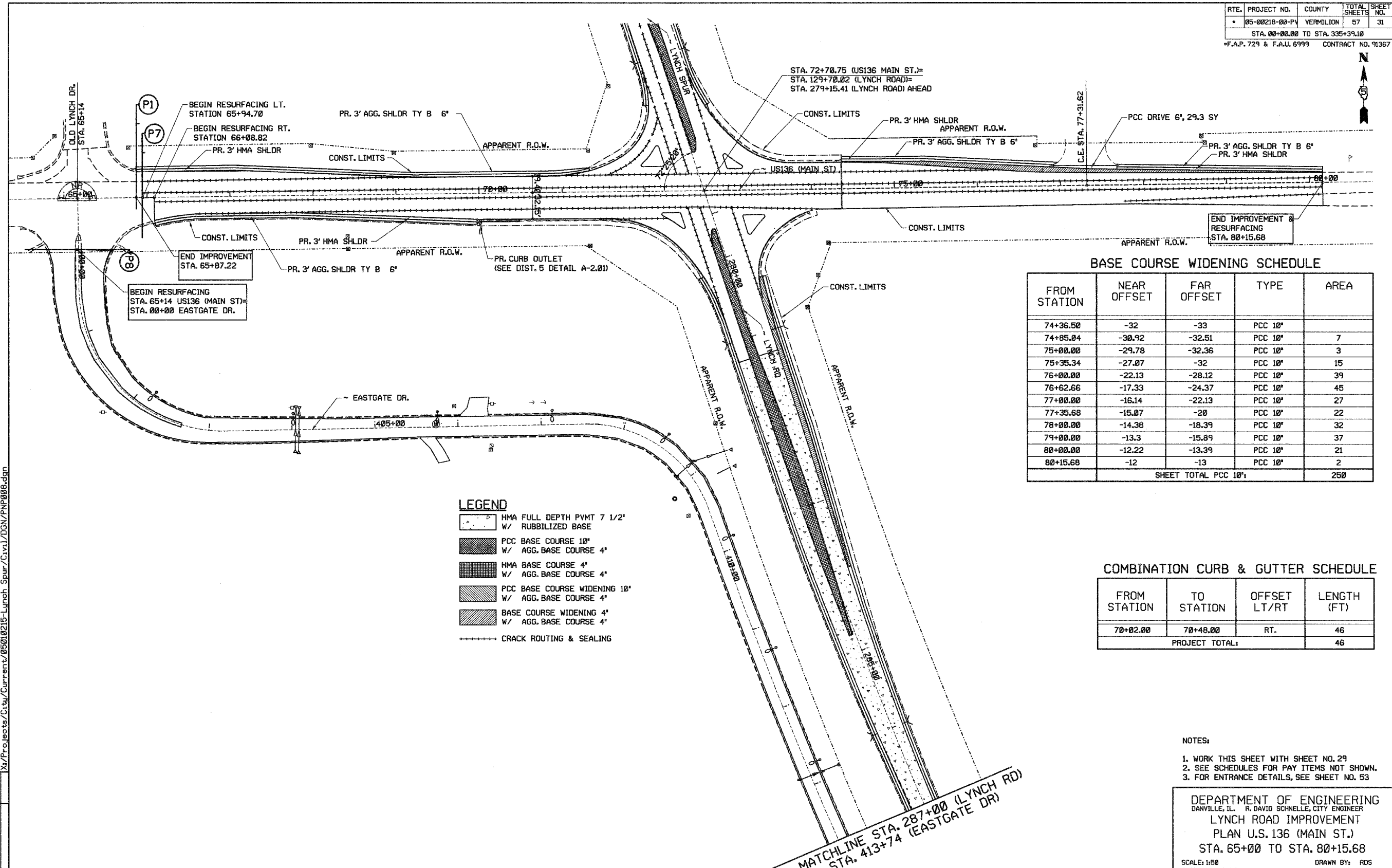


RTE.	PROJECT NO.	COUNTY	TOTAL SHEETS	SHEET NO.
•	05-00218-00-PV	VERMILION	57	31
STA. 00+00.00 TO STA. 335+39.18				
*F.A.P. 729 & F.A.U. 6999 CONTRACT NO. 91367				



BASE COURSE WIDENING SCHEDULE

FROM STATION	NEAR OFFSET	FAR OFFSET	TYPE	AREA
74+36.50	-32	-33	PCC 10'	
74+85.04	-30.92	-32.51	PCC 10'	7
75+00.00	-29.78	-32.36	PCC 10'	3
75+35.34	-27.07	-32	PCC 10'	15
76+00.00	-22.13	-28.12	PCC 10'	39
76+62.66	-17.33	-24.37	PCC 10'	45
77+00.00	-16.14	-22.13	PCC 10'	27
77+35.68	-15.07	-20	PCC 10'	22
78+00.00	-14.38	-18.39	PCC 10'	32
79+00.00	-13.3	-15.89	PCC 10'	37
80+00.00	-12.22	-13.39	PCC 10'	21
80+15.68	-12	-13	PCC 10'	2
SHEET TOTAL PCC 10'				250

COMBINATION CURB & GUTTER SCHEDULE

FROM STATION	TO STATION	OFFSET LT/RT	LENGTH (FT)
70+02.00	70+48.00	RT.	46
PROJECT TOTAL:			46

LEGEND

- HMA FULL DEPTH PVT 7 1/2' W/ RUBBLIZED BASE
- PCC BASE COURSE 10' W/ AGG. BASE COURSE 4'
- HMA BASE COURSE 4' W/ AGG. BASE COURSE 4'
- PCC BASE COURSE WIDENING 10' W/ AGG. BASE COURSE 4'
- BASE COURSE WIDENING 4' W/ AGG. BASE COURSE 4'
- CRACK ROUTING & SEALING

- NOTES:
1. WORK THIS SHEET WITH SHEET NO. 29
 2. SEE SCHEDULES FOR PAY ITEMS NOT SHOWN.
 3. FOR ENTRANCE DETAILS, SEE SHEET NO. 53

DEPARTMENT OF ENGINEERING
 DANVILLE, IL. R. DAVID SCHNELLE, CITY ENGINEER
 LYNCH ROAD IMPROVEMENT
 PLAN U.S. 136 (MAIN ST.)
 STA. 65+00 TO STA. 80+15.68

SCALE: 1:50
 DATE: 3/12/2007
 DRAWN BY: RDS
 CHECKED BY: MEW

X:\Projects\C:\City\Current\05010218-Lynch_Spur\Civil\DN\PNP008.dgn

REVISIONS	DATE