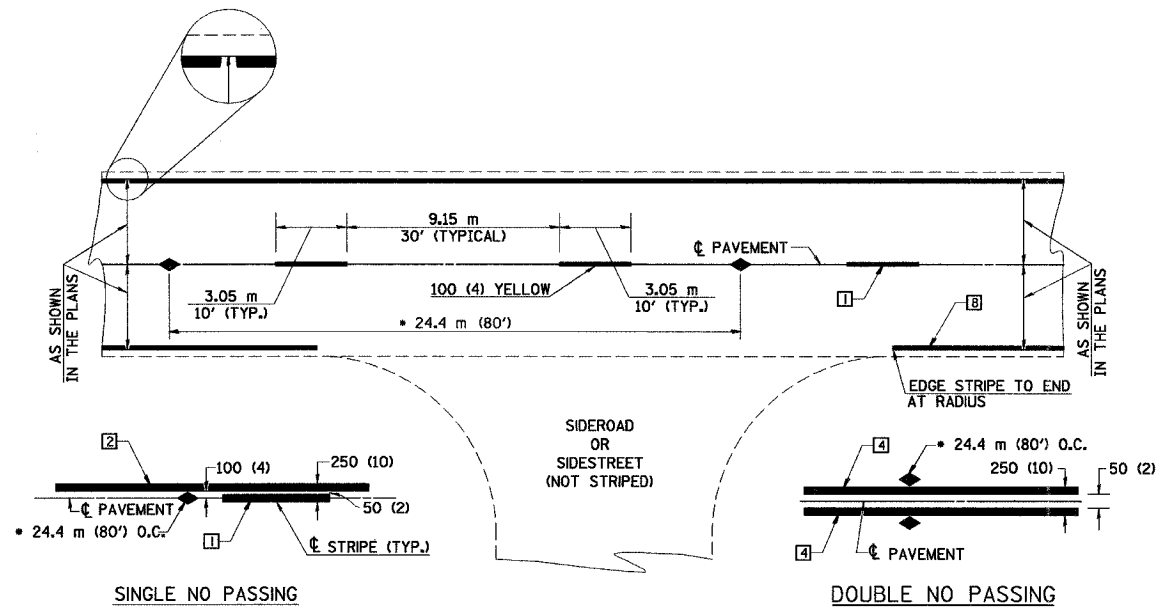
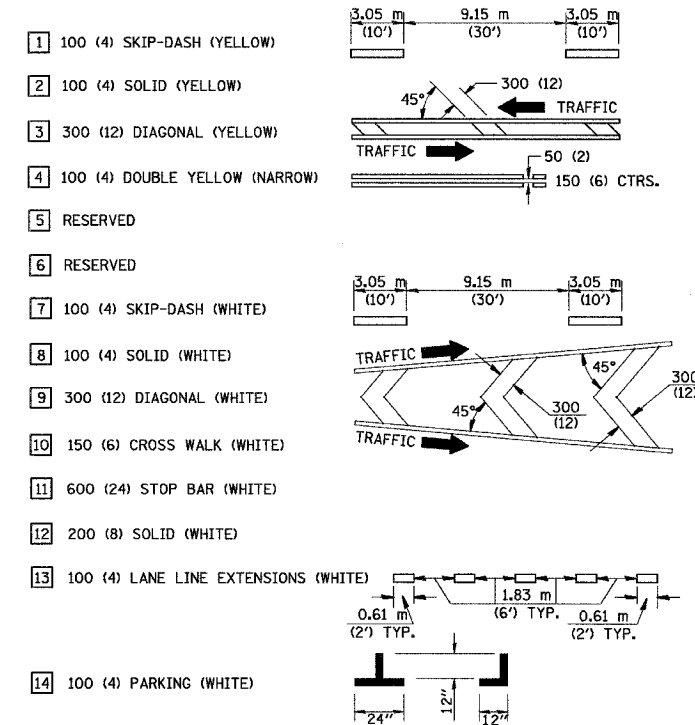


### TYPICAL APPLICATIONS OF PAVEMENT MARKINGS AND MARKERS



\* REDUCE TO 12.2 m (40') O.C. ON CURVES WITH POSTED OR ADVISORY SPEEDS OF 70 km/h (45 mph) OR LESS.

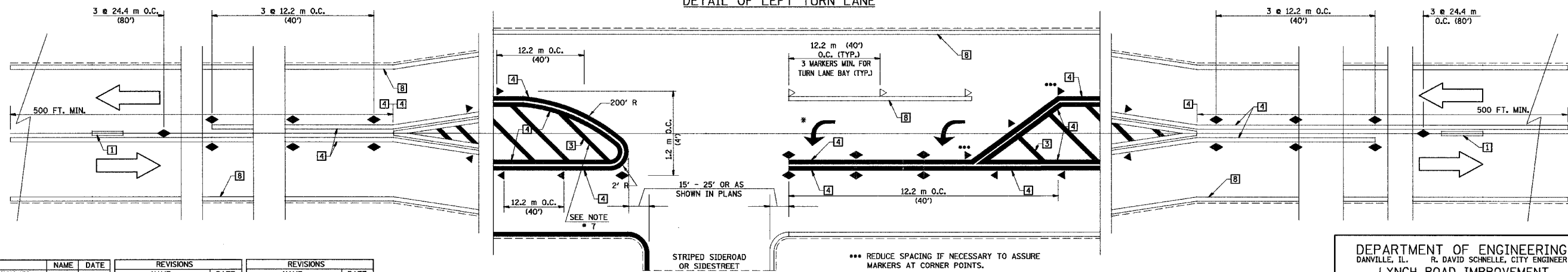
### TYPICAL PAVEMENT MARKING LEGEND



### TYPICAL PAVEMENT MARKERS LEGEND

- ◆ TWO-WAY AMBER MARKER
- ▶ ONE-WAY AMBER MARKER
- ▷ ONE-WAY CRYSTAL MARKER

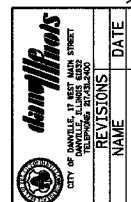
### DETAIL OF LEFT TURN LANE



ALL DIMENSIONS ARE IN MILLIMETERS (INCHES) UNLESS OTHERWISE NOTED

\*\*\* REDUCE SPACING IF NECESSARY TO ASSURE MARKERS AT CORNER POINTS.

\* TURN ARROWS SHALL BE PLACED AS SHOWN ON SHEET #2.



DESIGNED	NAME	DATE	REVISIONS	REVISIONS
J.M.H.	J.M.H.	5-85	J.M.H.	5-3-88
F.M.S.	F.M.S.	6-85	J.M.H.	10-88
F-5,25				

SHEET 1 OF 3

DEPARTMENT OF ENGINEERING  
 DANVILLE, IL. R. DAVID SCHNELLE, CITY ENGINEER  
 LYNCH ROAD IMPROVEMENT  
 IDOI DISTRICT 5  
 CADD DETAILS II

SCALE: 1/2"=20'  
 DATE: 3/12/2007  
 DRAWN BY: BDS  
 CHECKED BY: MEW

X:\Projects\City\Current\05010215-Lynch\_Spur\Civil\DSN\DET003.dgn