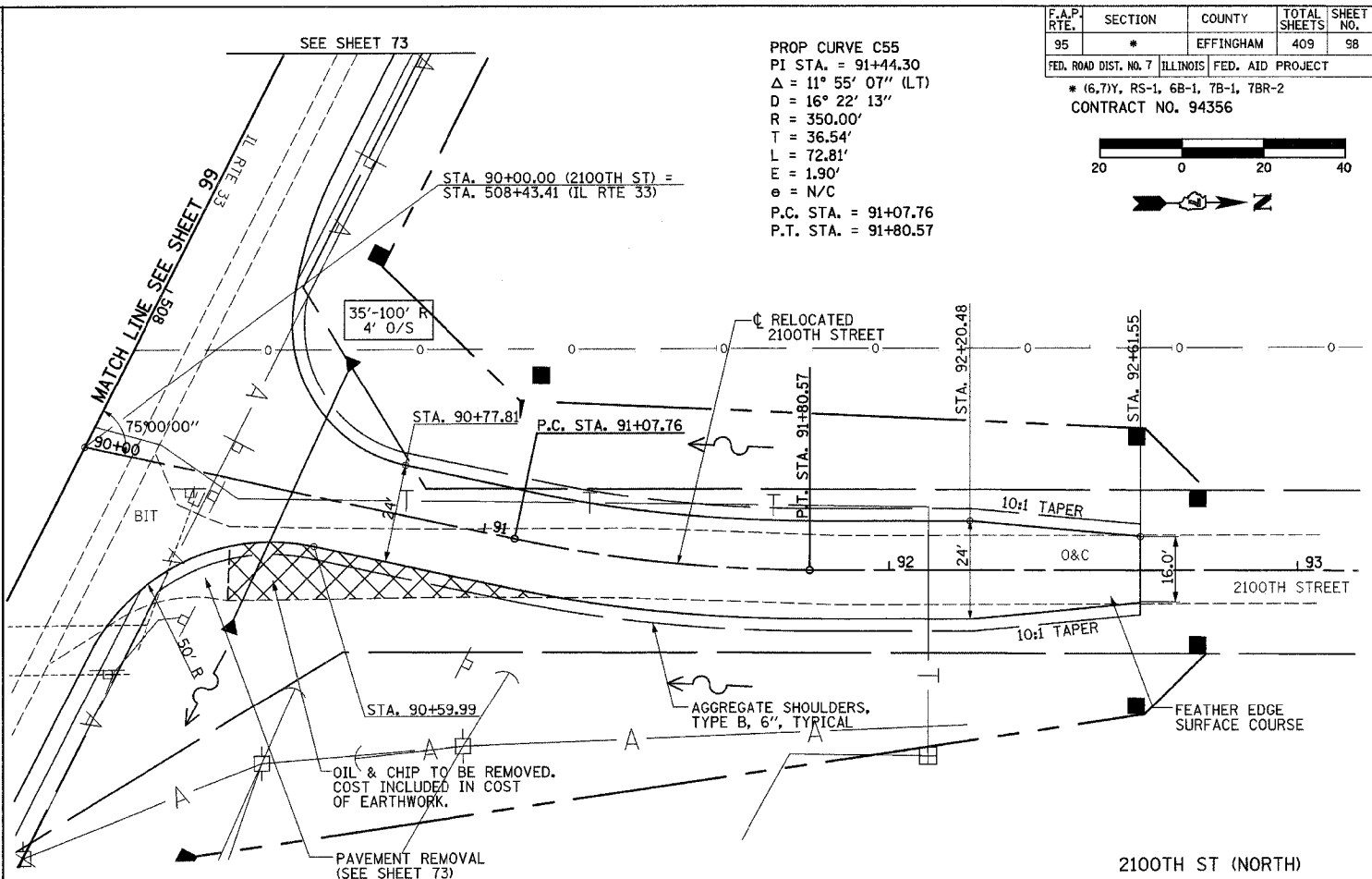
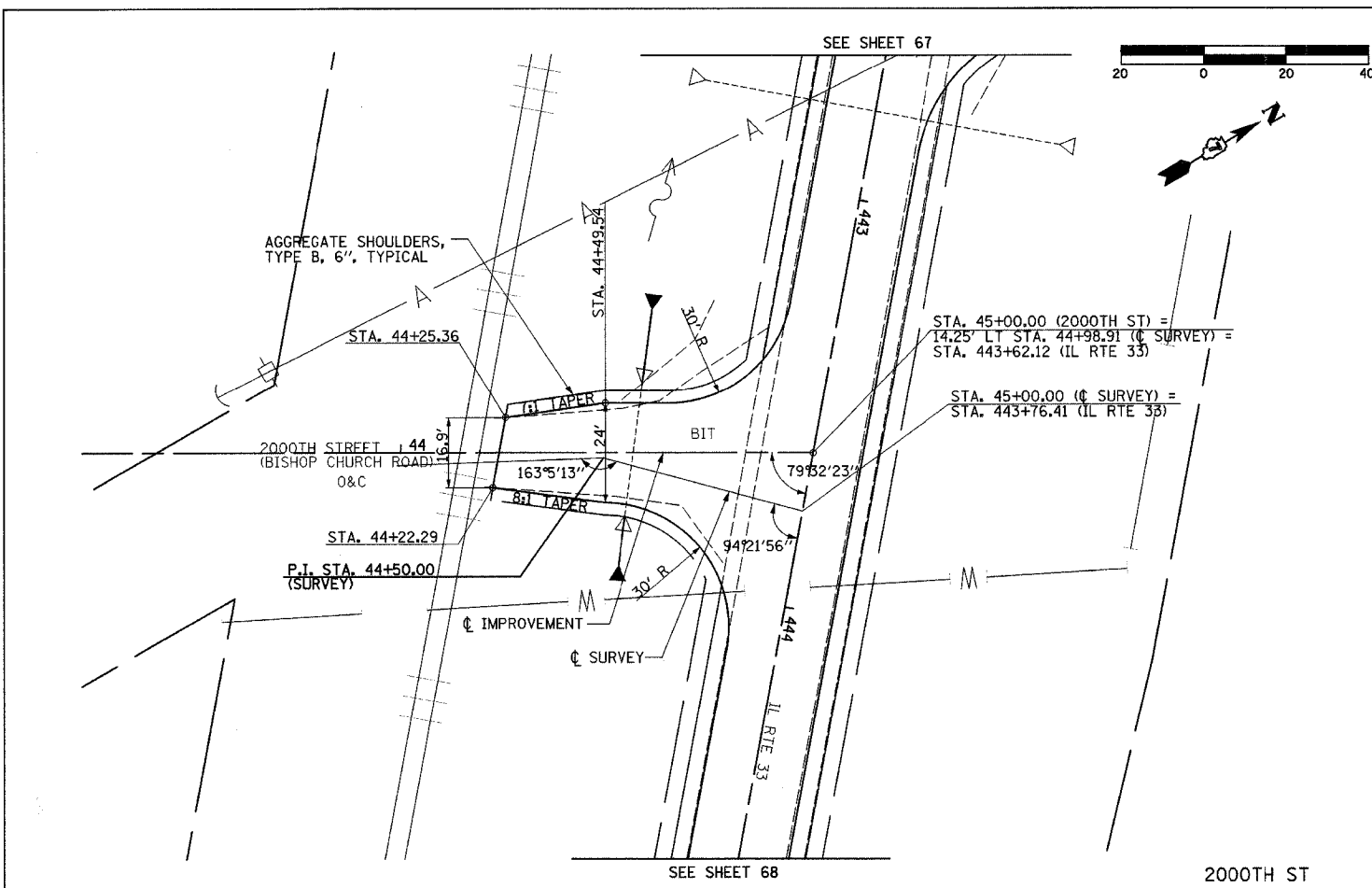


DATE	
BY	
PLAN	
SURVEYED	
DESIGNED	
CHECKED	
IN CHARGE	
NOTE BOOK NO.	
FILE NO.	

DATE	
BY	
PROFILE	
SURVEYED	
DESIGNED	
CHECKED	
IN CHARGE	
NOTE BOOK NO.	
FILE NO.	



PROP CURVE C55  
 PI STA. = 91+44.30  
 $\Delta = 11^\circ 55' 07''$  (LT)  
 $D = 16^\circ 22' 13''$   
 $R = 350.00'$   
 $T = 36.54'$   
 $L = 72.81'$   
 $E = 1.90'$   
 $e = N/C$   
 P.C. STA. = 91+07.76  
 P.T. STA. = 91+80.57

F.A.P. RTE.	SECTION	COUNTY	TOTAL SHEETS	SHEET NO.
95	*	EFFINGHAM	409	98

FED. ROAD DIST. NO. 7 ILLINOIS FED. AID PROJECT  
 \* (6,7)Y, RS-1, 6B-1, 7B-1, 7BR-2  
 CONTRACT NO. 94356

