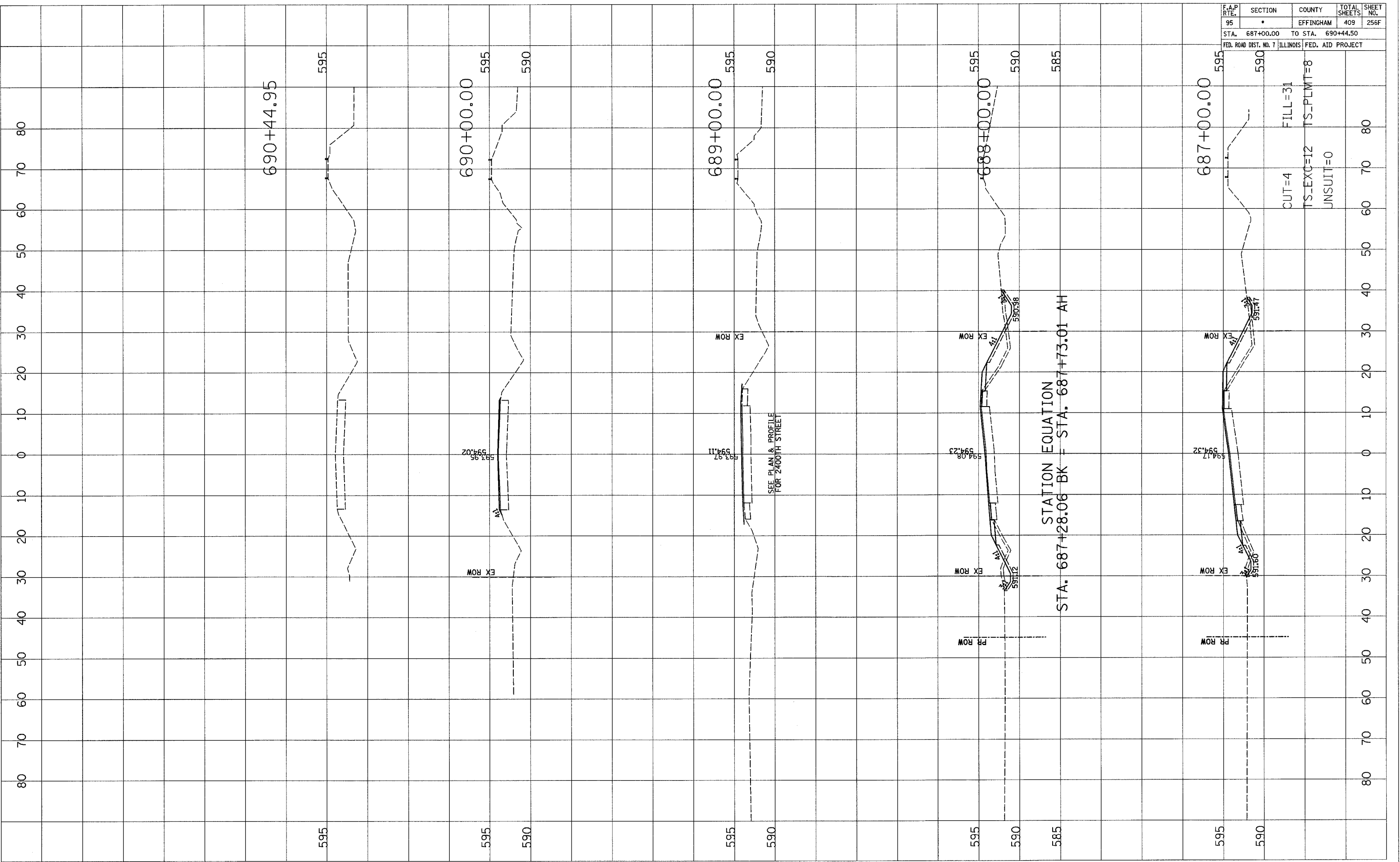


F.A.P. RTE.	SECTION	COUNTY	TOTAL SHEETS	SHEET NO.
95	•	EFFINGHAM	409	256F
STA. 687+00.00		TO STA. 690+44.50		
FED. ROAD DIST. NO. 7 ILLINOIS FED. AID PROJECT				

FINAL SURVEY	DATE
BY	
NO.	

ORIGINAL SURVEY	DATE
BY	
NO.	



STATION EQUATION
 STA. 687+28.06 BK = STA. 687+73.01 AH

CUT=4
 TS-EXO=I2
 UNSUIT=0
 FILL=31
 TS-PLWT=8