

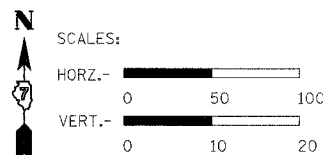
TRAFFIC BARRIER TERMINALS

LOCATION	T.B.T. TY. 1	T.B.T.
	SPEC. (TAN.)	TYPE 5
EACH		
LT. & RT. STA. 48+61.25 TO STA. 49+11.25	2	2
LT. & RT. STA. 49+11.25 TO STA. 49+24.50		2
LT. & RT. STA. 50+75.50 TO STA. 50+88.75		2
LT. & RT. STA. 50+88.75 TO STA. 51+38.75	2	
TOTALS	4	4

THE EARTH EXCAVATION AND FURNISHED EXCAVATION REQUIRED TO CONSTRUCT THE SHOULDER WIDENING FOR THE INSTALLATION OF THE TRAFFIC BARRIER TERMINALS IS INCLUDED IN THE RESPECTIVE PAY ITEMS.

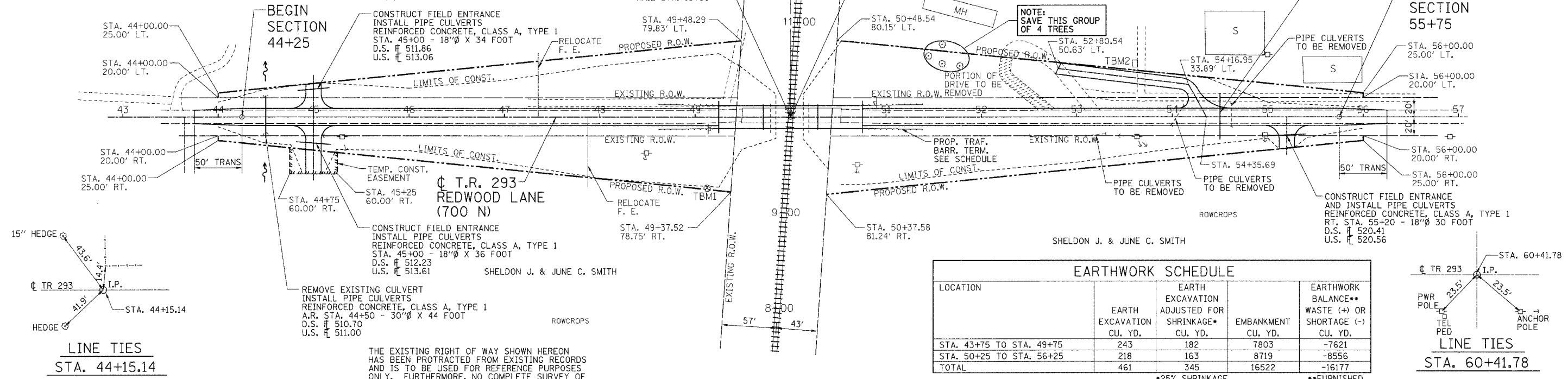
ROWCROPS

SHELDON J. & JUNE C. SMITH



EXISTING STRUCTURE: SEVEN (7) SPAN TIMBER BRIDGE WITH TIMBER DECK ON TIMBER PILE BENT PIERS AND ABUTMENTS. 104'-0" LONG X 16'-0" WIDE. TO BE REMOVED. SEE SPECIAL PROVISIONS.

ROUTE	SECTION	COUNTY	TOTAL SHEETS	SHEET NO.
TR 293	96-10120-01-BR	CLAY	13	3
FED. ROAD DIST. NO. 7		ILLINOIS	FED. AID PROJECT	
CONTRACT NO. 95514				



LOCATION	EARTH EXCAVATION CU. YD.	EARTH EXCAVATION ADJUSTED FOR SHRINKAGE* CU. YD.	EMBANKMENT CU. YD.	EARTHWORK BALANCE** WASTE (+) OR SHORTAGE (-) CU. YD.
STA. 43+75 TO STA. 49+75	243	182	7803	-7621
STA. 50+25 TO STA. 56+25	218	163	8719	-8556
TOTAL	461	345	16522	-16177

*25% SHRINKAGE **FURNISHED EXCAVATION

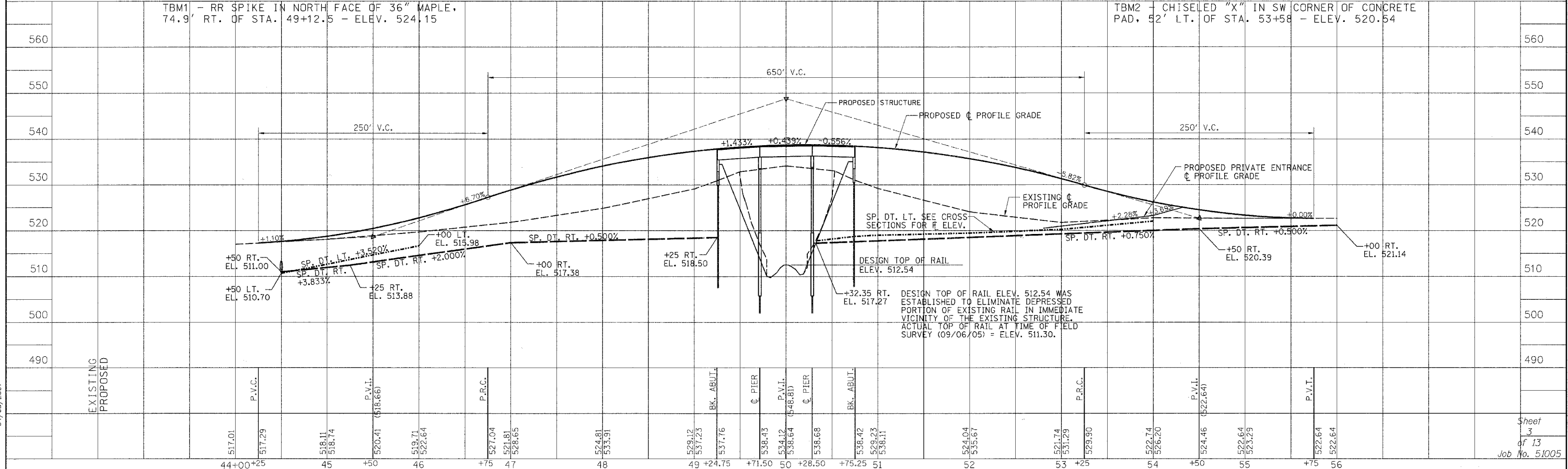
LINE TIES
STA. 44+15.14

LINE TIES
STA. 60+41.78

THE EXISTING RIGHT OF WAY SHOWN HEREON HAS BEEN PROTRACTED FROM EXISTING RECORDS AND IS TO BE USED FOR REFERENCE PURPOSES ONLY. FURTHERMORE, NO COMPLETE SURVEY OF SAID R.O.W. IS IMPLIED BY THIS DRAWING.

TBM1 - RR SPIKE IN NORTH FACE OF 36" MAPLE, 74.9' RT. OF STA. 49+12.5 - ELEV. 524.15

TBM2 - CHISELED "X" IN SW CORNER OF CONCRETE PAD, 52' LT. OF STA. 53+58 - ELEV. 520.54



04/03/2007

Sheet 3 of 13
Job No. 51005