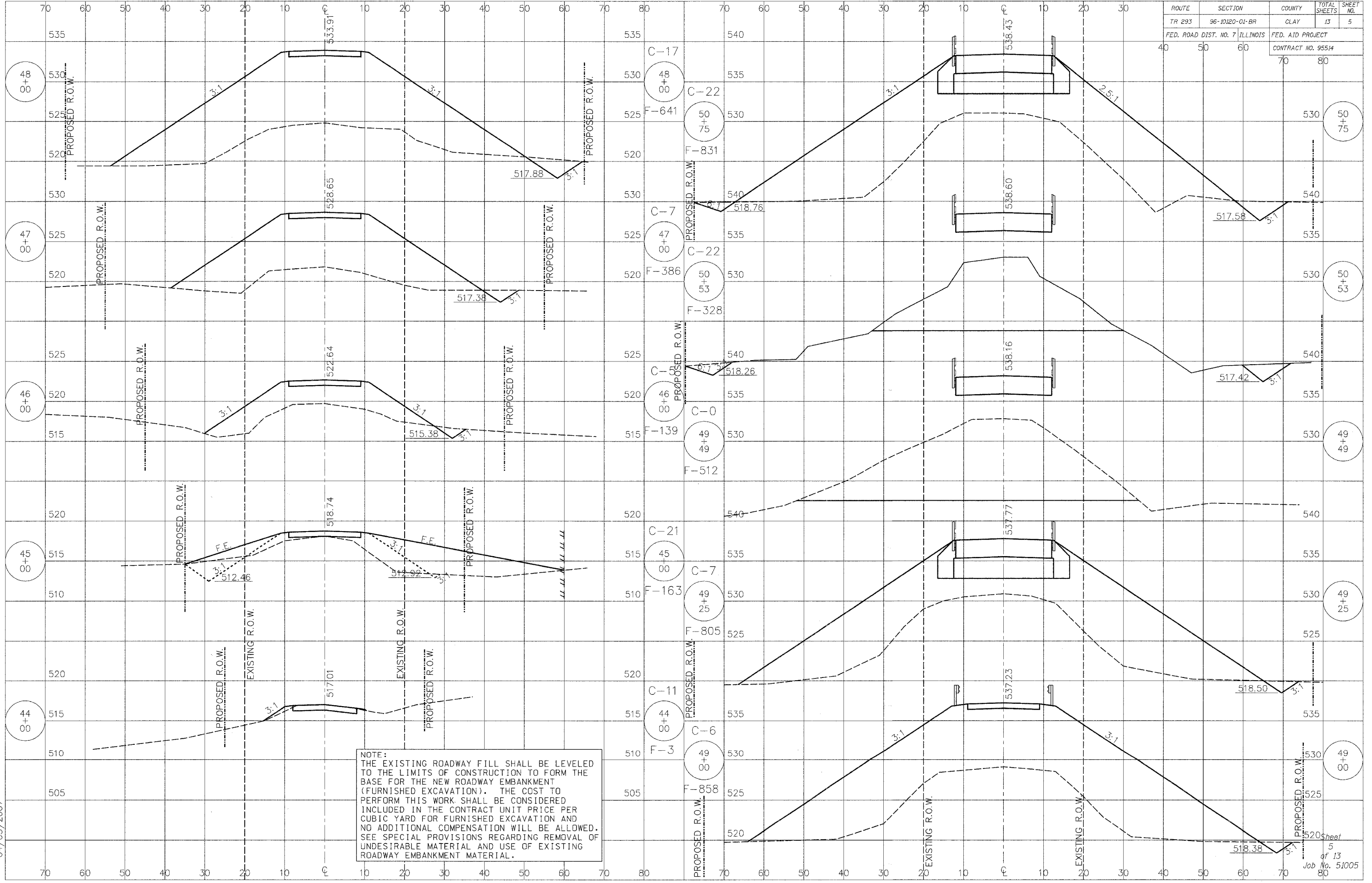


ROUTE	SECTION	COUNTY	TOTAL SHEETS	SHEET NO.
TR 293	96-10120-01-BR	CLAY	13	5
FED. ROAD DIST. NO. 7 ILLINOIS		FED. AID PROJECT		
		CONTRACT NO. 95514		



NOTE:
 THE EXISTING ROADWAY FILL SHALL BE LEVELLED TO THE LIMITS OF CONSTRUCTION TO FORM THE BASE FOR THE NEW ROADWAY EMBANKMENT (FURNISHED EXCAVATION). THE COST TO PERFORM THIS WORK SHALL BE CONSIDERED INCLUDED IN THE CONTRACT UNIT PRICE PER CUBIC YARD FOR FURNISHED EXCAVATION AND NO ADDITIONAL COMPENSATION WILL BE ALLOWED. SEE SPECIAL PROVISIONS REGARDING REMOVAL OF UNDESIRABLE MATERIAL AND USE OF EXISTING ROADWAY EMBANKMENT MATERIAL.

04/03/2007