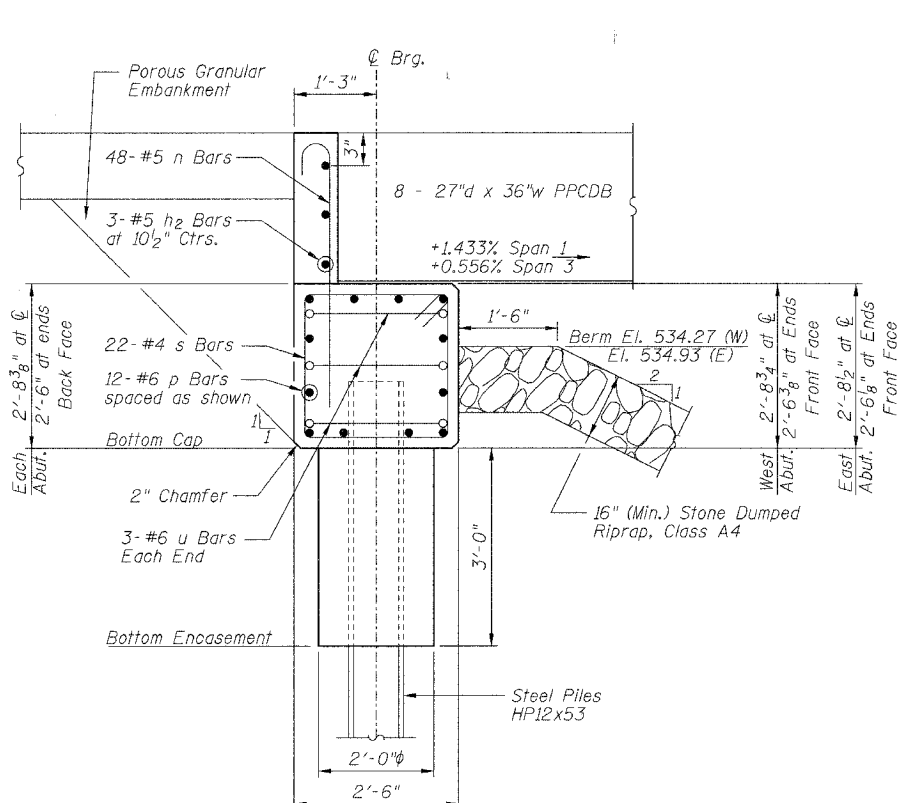
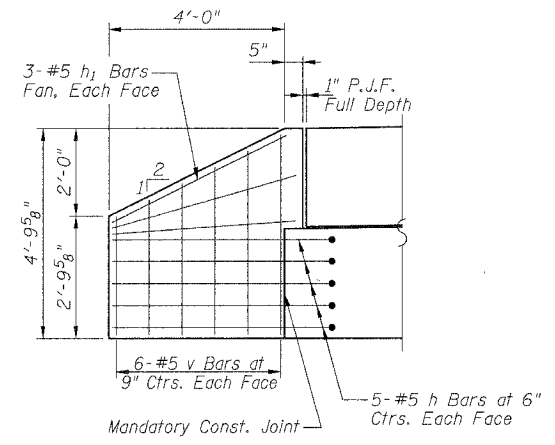


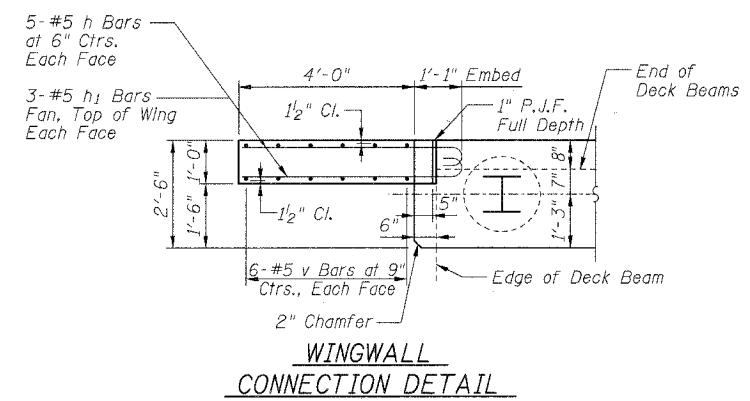
ROUTE	SECTION	COUNTY	TOTAL SHEETS	SHEET NO.
TR 293	96-10120-01-BR	CLAY	13	12
FED. ROAD DIST. NO. 7		ILLINOIS	FEDERAL AID PROJECT	
CONTRACT NO. 95514				



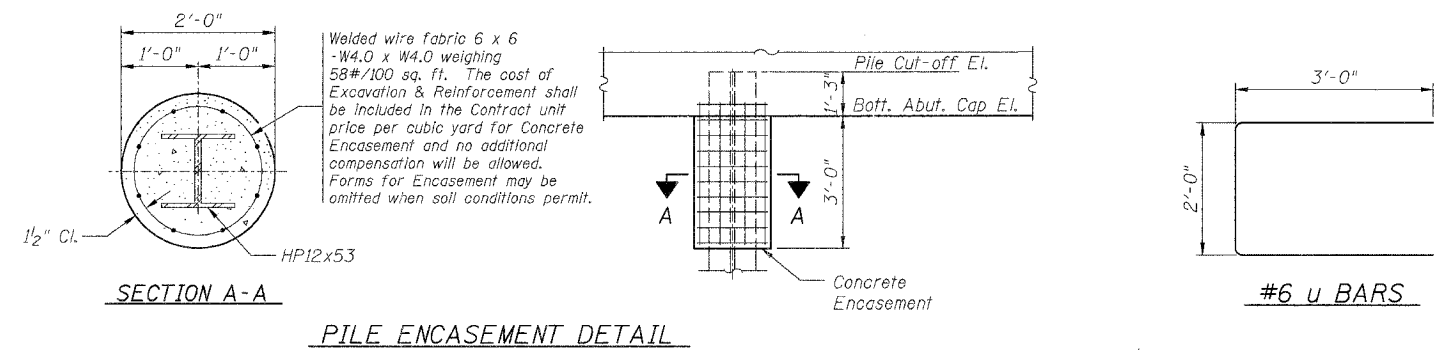
SECTION THRU ABUTMENT



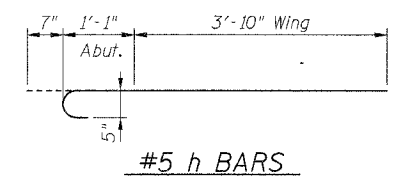
ELEVATION OF WINGWALL



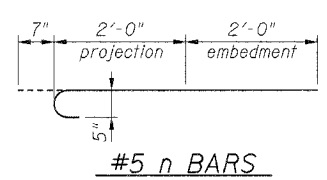
WINGWALL CONNECTION DETAIL



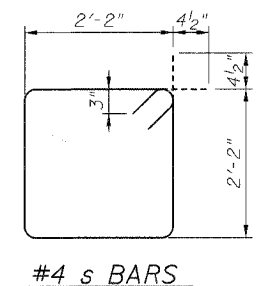
PILE ENCASEMENT DETAIL



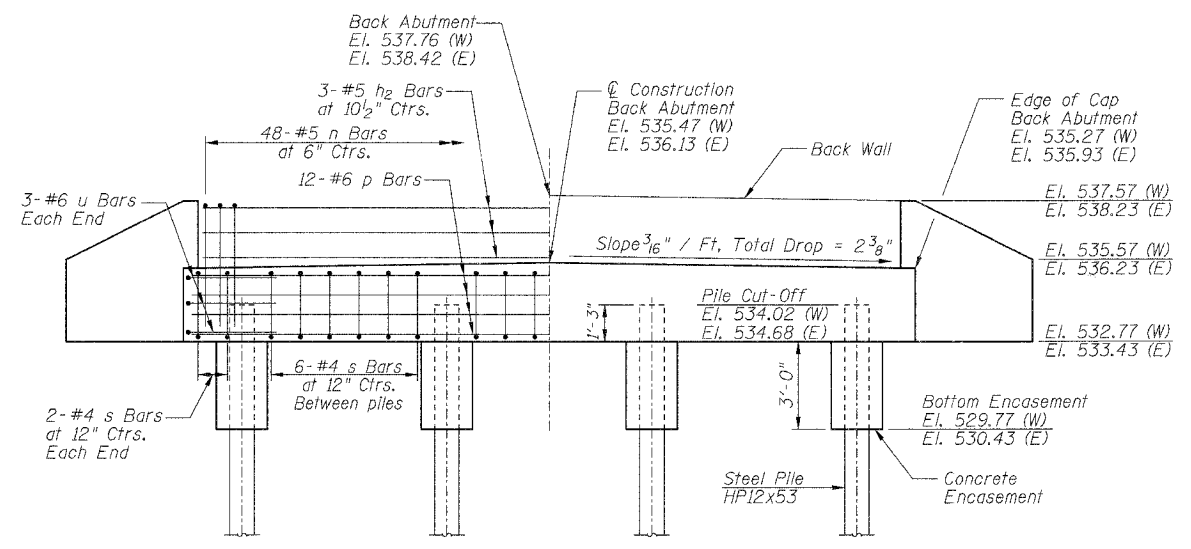
#5 h BARS



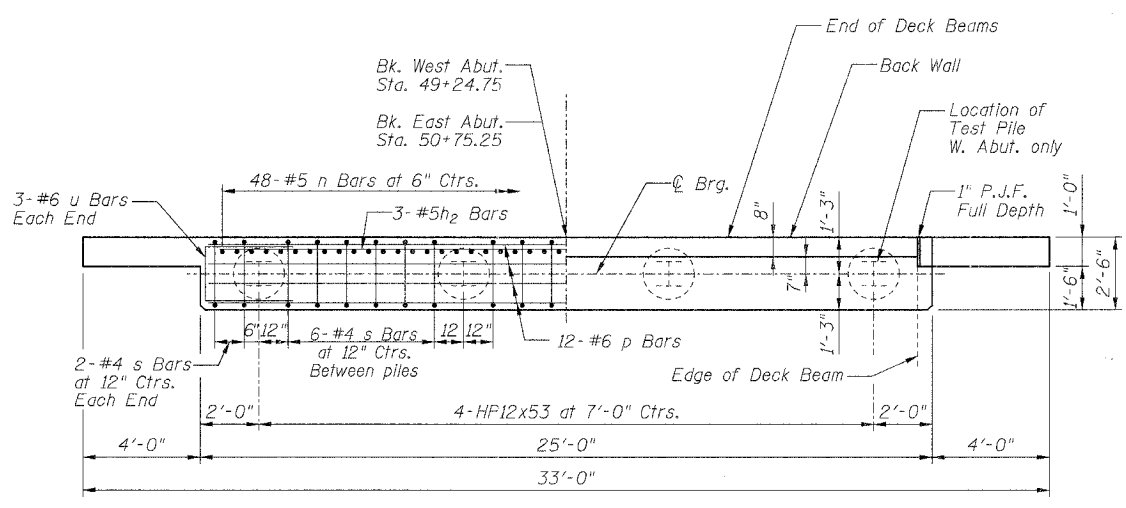
#5 n BARS



#4 s BARS



ELEVATION



PLAN

PILE DATA

Type and Size: Steel HP12x53  
 Nominal Required Bearing: 280 kips  
 Allowable Resistance Available: 93 kips  
 Estimated Length:  
 West Abutment: 59 Foot  
 East Abutment: 46 Foot  
 Number of Production Piles:  
 West Abutment: 3 Each  
 East Abutment: 4 Each  
 Number of Test Piles:  
 West Abutment: 1 Each  
 East Abutment: None

BILL OF MATERIALS  
 ONE ABUTMENT w/ WINGWALLS

Bar	No.	Size	Length	Shape
h	20	#5	5'-6"	
h1	12	#5	4'-6"	
h2	3	#5	23'-8"	
n	48	#5	4'-7"	
p	12	#6	24'-8"	
s	22	#4	9'-5"	
u	6	#6	8'-0"	
v	24	#5	4'-6"	CUT IN FIELD
Concrete Structures		Cu. Yd.	8.8	
Concrete Encasement		Cu. Yd.	1.4	
Reinforcement Bars		Pound	1240	

GENERAL NOTES

All exposed edges shall have standard 3/4 inch chamfer, unless otherwise noted.  
 All clearances between rebar and form surface shall be 2 inches, unless otherwise noted.  
 Space reinforcement in cap to miss PPCDB dowel rods.  
 The Contractor shall drive one (1) Steel HP12x53 Test Pile in a production pile location at the west abutment as directed by the Engineer before ordering the remainder of the piles.  
 The Contractor is hereby advised that very stiff soils will be encountered prior to the location of anticipated refusal. See the Soil Borings for further information.  
 The Steel H-piles shall be according to AASHTO M270 Grade 50.

ABUTMENT AND WINGWALL DETAILS  
 TR 293 BRIDGE OVER  
 CN / IC RAILROAD  
 SECTION 96-10120-01-BR  
 CLAY COUNTY, ILLINOIS

Sheet 12 of 13  
 Job No. 51005

04/03/2007