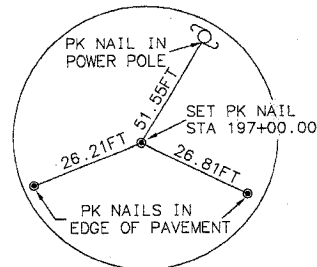


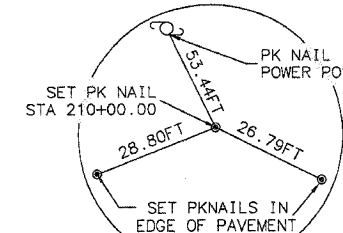
SECTION NO.	COUNTY HIGHWAY	COUNTY	SHEET OF SHEETS
02-00161-02-BR	CH 34	ST. CLAIR	5 OF 22
FHWA REG.NO.7	ILLINOIS	PROJ. BRM-5011(188)	
ROW & EASEMENTS		CONTRACT 97280	

RIGHT OF-WAY PLAN SHEET BUNKUM ROAD, C.H. 34

SECTION 02-00161-02-BR
PART OF THE EAST HALF OF SECTION 15,
AND PART OF THE WEST HALF OF SECTION 14,
TOWNSHIP 2 NORTH, RANGE 9 WEST,
OF THE THIRD PRINCIPAL MERIDIAN,
ST. CLAIR COUNTY, ILLINOIS



P.O.T. STA 197+00.00



P.O.T. STA 210+00.00



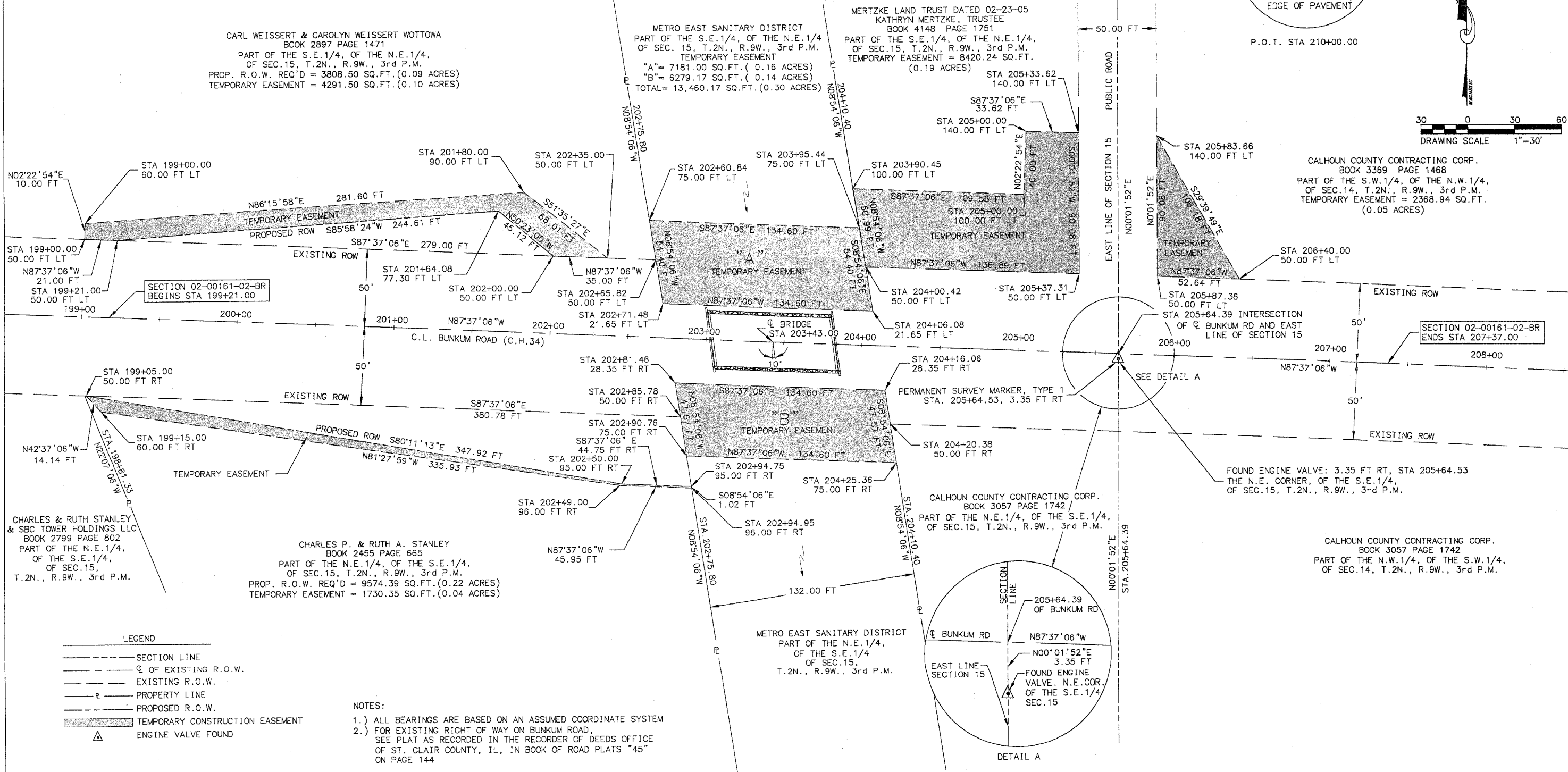
30 0 30 60
DRAWING SCALE 1"=30'

CARL WEISSERT & CAROLYN WEISSERT WOTTOWA
BOOK 2897 PAGE 1471
PART OF THE S.E.1/4, OF THE N.E.1/4,
OF SEC.15, T.2N., R.9W., 3rd P.M.
PROP. R.O.W. REQ'D = 3808.50 SQ.FT. (0.09 ACRES)
TEMPORARY EASEMENT = 4291.50 SQ.FT. (0.10 ACRES)

METRO EAST SANITARY DISTRICT
PART OF THE S.E.1/4, OF THE N.E.1/4
OF SEC. 15, T.2N., R.9W., 3rd P.M.
TEMPORARY EASEMENT
"A" = 7181.00 SQ.FT. (0.16 ACRES)
"B" = 6279.17 SQ.FT. (0.14 ACRES)
TOTAL = 13,460.17 SQ.FT. (0.30 ACRES)

MERTZKE LAND TRUST DATED 02-23-05
KATHRYN MERTZKE, TRUSTEE
BOOK 4148 PAGE 1751
PART OF THE S.E.1/4, OF THE N.E.1/4,
OF SEC.15, T.2N., R.9W., 3rd P.M.
TEMPORARY EASEMENT = 8420.24 SQ.FT.
(0.19 ACRES)

CALHOUN COUNTY CONTRACTING CORP.
BOOK 3369 PAGE 1468
PART OF THE S.W.1/4, OF THE N.W.1/4,
OF SEC.14, T.2N., R.9W., 3rd P.M.
TEMPORARY EASEMENT = 2368.94 SQ.FT.
(0.05 ACRES)



CHARLES & RUTH STANLEY & SBC TOWER HOLDINGS LLC
BOOK 2799 PAGE 802
PART OF THE N.E.1/4,
OF THE S.E.1/4,
OF SEC.15,
T.2N., R.9W., 3rd P.M.

CHARLES P. & RUTH A. STANLEY
BOOK 2455 PAGE 665
PART OF THE N.E.1/4, OF THE S.E.1/4,
OF SEC.15, T.2N., R.9W., 3rd P.M.
PROP. R.O.W. REQ'D = 9574.39 SQ.FT. (0.22 ACRES)
TEMPORARY EASEMENT = 1730.35 SQ.FT. (0.04 ACRES)

CALHOUN COUNTY CONTRACTING CORP.
BOOK 3057 PAGE 1742
PART OF THE N.E.1/4, OF THE S.E.1/4,
OF SEC.15, T.2N., R.9W., 3rd P.M.

CALHOUN COUNTY CONTRACTING CORP.
BOOK 3057 PAGE 1742
PART OF THE N.W.1/4, OF THE S.W.1/4,
OF SEC.14, T.2N., R.9W., 3rd P.M.

- LEGEND**
- SECTION LINE
 - C OF EXISTING R.O.W.
 - EXISTING R.O.W.
 - PROPERTY LINE
 - PROPOSED R.O.W.
 - TEMPORARY CONSTRUCTION EASEMENT
 - △ ENGINE VALVE FOUND

- NOTES:**
- 1.) ALL BEARINGS ARE BASED ON AN ASSUMED COORDINATE SYSTEM
 - 2.) FOR EXISTING RIGHT OF WAY ON BUNKUM ROAD, SEE PLAT AS RECORDED IN THE RECORDER OF DEEDS OFFICE OF ST. CLAIR COUNTY, IL, IN BOOK OF ROAD PLATS "45" ON PAGE 144

