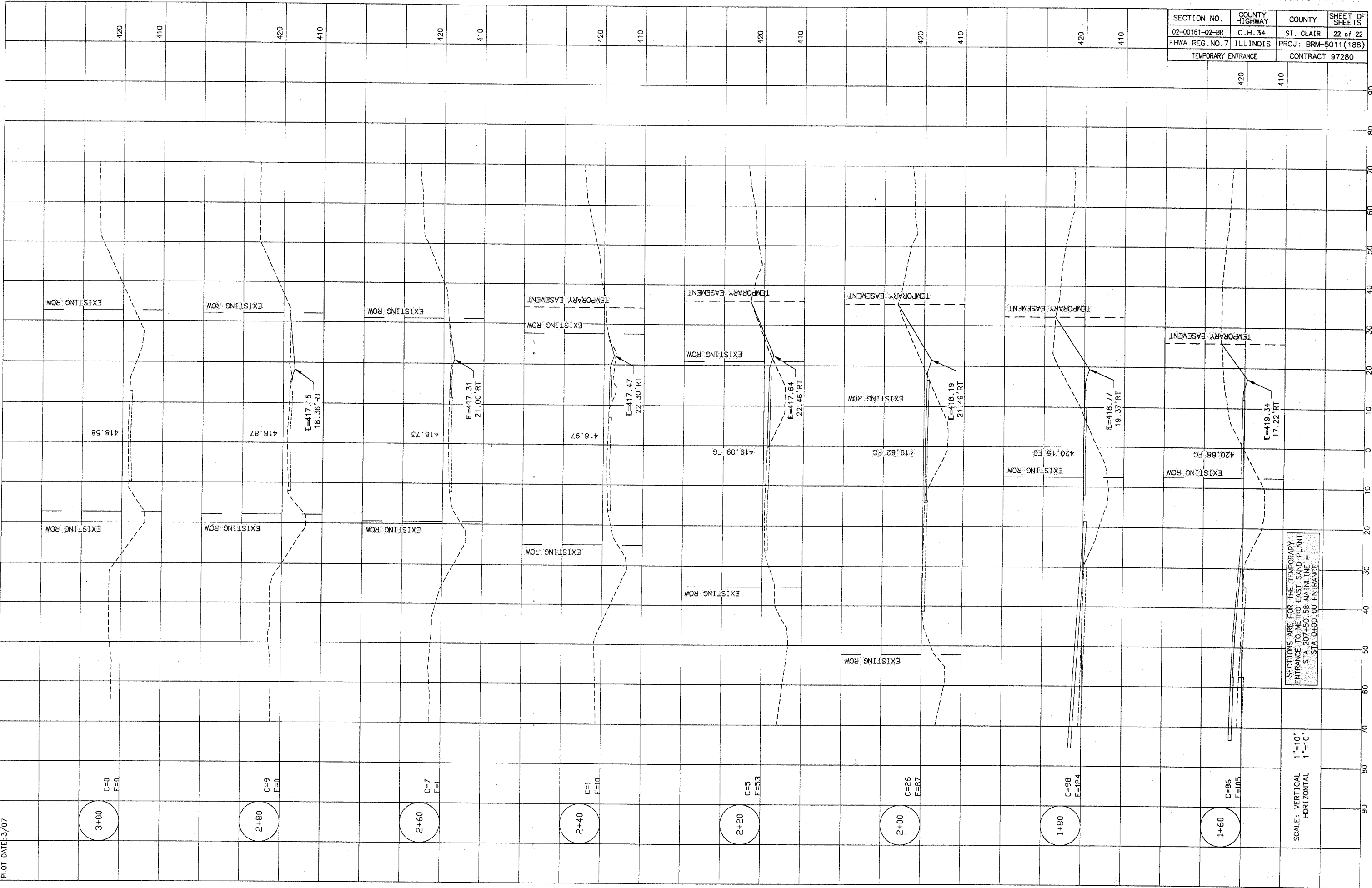


PLOT DATE: 3/07

SECTION NO.	COUNTY HIGHWAY	COUNTY	SHEET OF SHEETS
02-00161-02-BR	C. H. 34	ST. CLAIR	22 of 22
FHWA REG. NO. 7		ILLINOIS	PROJ: BRM-5011(188)
TEMPORARY ENTRANCE		CONTRACT 97280	



SECTIONS ARE FOR THE TEMPORARY
ENTRANCE TO METRO EAST SAND PLANT
STA. 207+50.58 MAINLINE
STA. 0+00.00 ENTRANCE

SCALE: VERTICAL 1"=10'
HORIZONTAL 1"=10'