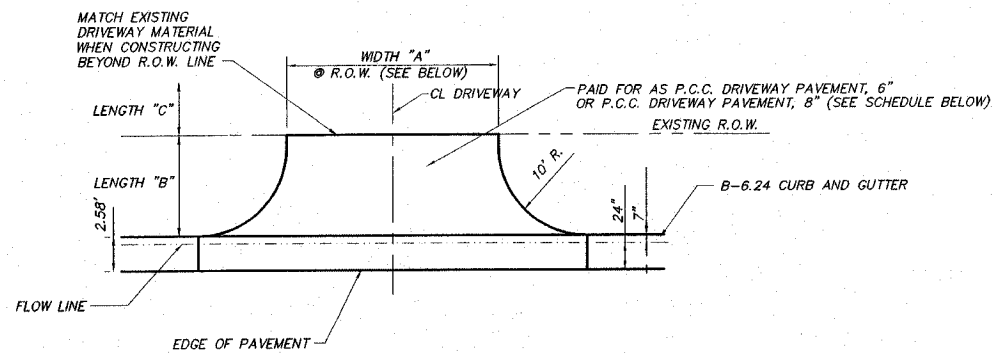


REVISIONS

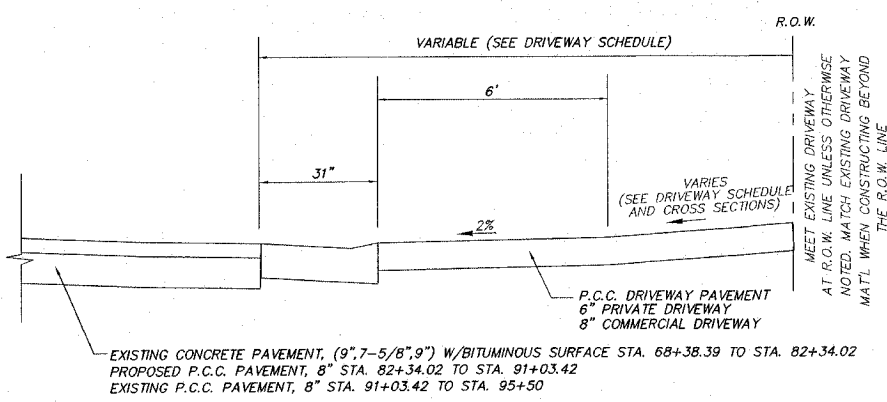
**SMS ENGINEERS**  
 Sheppard, Morgan & Schwaab, Inc.  
 CONSULTING ENGINEERS AND LAND SURVEYORS  
 215 Maple Street, P.O. Box E, Moline, IL 62450  
 10 Central Industrial Drive, Granite City, IL 62040  
 Phone: 618-242-8755 Fax: 618-242-8756  
 Email: mail@smsengineers.com

**EDWARDSVILLE ROAD PHASE II (FAU 8980)**  
**SECTION 05-00043-02-WF**  
**WOOD RIVER, ILLINOIS**  
**DETAILS OF CONSTRUCTION**

DWG. NO. B\_constdet2.dwg  
 REF. BK. PG. 286614  
 JOB NO. 286614  
 DSN. BY: CLA  
 DWN. BY: CDP-ink  
 CHK. BY: JHH  
 DATE: JANUARY, 2007  
 SCALE: NO SCALE  
 SHEET 3 OF 31



**DETAIL-PRIVATE AND COMMERCIAL DRIVEWAY ENTRANCE**  
 NO SCALE



**TYPICAL SECTION-PROPOSED PRIVATE/COMMERCIAL DRIVEWAY ENTRANCE**  
 NO SCALE

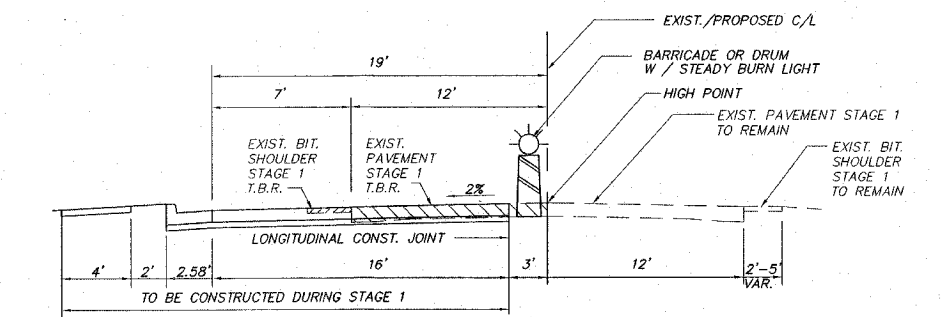
**LEGEND**

- EXISTING GUY POLE -- ○
- EXISTING LIGHT POLE -- ✕
- EXISTING POWER POLE -- ⊕
- EXISTING TELEPHONE POLE -- ⊖
- EXISTING GUY WIRE -- —
- EXISTING TELEPHONE SPLICE BOX -- △
- EXISTING WATER VALVE -- ⊕
- EXISTING GAS VALVE -- ⊕
- EXISTING FIRE HYDRANT -- ⊕FH
- EXISTING SANITARY MANHOLE TOP -- ⊕
- EXISTING STORM MANHOLE TOP -- ⊕
- CONTROL POINT -- △
- BENCHMARK -- B.M.
- RIGHT-OF-WAY MARKER -- ⊕MON
- PK NAIL FOUND -- ⊕PK
- STONE FOUND -- ⊕STONE
- BRASS MONUMENT FOUND -- ⊕MON
- IRON PIPE FOUND -- ⊕IP
- MONUMENT FOUND -- ⊕MON
- EXISTING TRAFFIC SIGN -- ⊕
- EXISTING TRAFFIC SIGNAL -- ⊕
- EXISTING TRAFFIC SIGNAL CONTROLLER -- ⊕
- EXISTING HANDHOLE -- ⊕
- EXISTING DOUBLE HANDHOLE -- ⊕
- EXISTING MAST ARM BASE -- ⊕
- PROPOSED STORM MANHOLE TOP -- ⊕
- PROPOSED TRAFFIC SIGN -- ⊕
- PROPOSED PEDESTRIAN PUSH BUTTON -- ⊕
- PROPOSED HANDHOLE -- ⊕
- PROPOSED EDGE OF PAVEMENT ELEVATION -- + 512.00 EP
- PROPOSED TOP CURB ELEVATION -- + T.C.=550.25
- PROPOSED FLOWLINE ELEVATION -- + F.L.=501.58

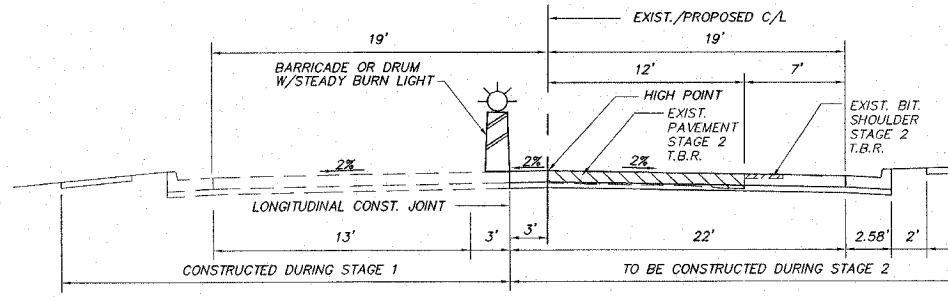
**DRIVEWAY SCHEDULE**

STATION	RADIUS	WIDTH "A" (FT)	LENGTH "B" (FT)	LENGTH "C" (FT)	EXISTING MATERIAL	DRIVEWAY PAVEMENT REMOVAL (SQ. YDS.)	PCC DRIVEWAY PAVEMENT, 6" (SQ. YDS.)	PCC DRIVEWAY PAVEMENT, 8" (SQ. YDS.)	INCIDENTAL HOT-MIX SURFACING, 8" (TONS)	AGGREGATE SURFACE COURSE, TYPE B (TONS)	TYPE OF ENTRANCE	EXISTING GRADE (%)	PROPOSED GRADE (%)	REMARKS
81+27.67 RT.	10'	35	14.5	0	BITUMINOUS	87.7	0	72.0	0	0	COMMERCIAL	2.0	2.0	NONE
81+90.95 RT.	10'	28	15.0	0	BITUMINOUS	72.9	0	59.5	0	0	COMMERCIAL	2.0	2.0	NONE
82+94.46 LT.	10'	25	17.5	0 - 3.5	CONCRETE	83.5	0	51.0	0	0	COMMERCIAL	5.9	0.3	T.C.E. REQD
83+14.10 RT.	10'	34	10.0	8.0	BITUMINOUS	117.6	0	45.0	15	0	COMMERCIAL	0.5	2.0	T.C.E. REQD
83+81.27 LT.	10'	30	8.5	10.0	CONC/ASPH	120.0	0	78.0	0	8	COMMERCIAL	0	5.0	T.C.E. REQD
84+48.64 RT.	10'	20	10.0	8.5	GRAVEL	0	0	29.0	0	0	COMMERCIAL	1.0	2.5	T.C.E. REQD
84+67.60 LT.	10'	34	8.5	10.0	BITUMINOUS	152.4	0	29.0	0	0	COMMERCIAL	1.0	3.0	NONE
85+35.17 RT.	10'	20	10.0	0	GRAVEL	0	0	29.0	0	0	COMMERCIAL	0	0.5	NONE
85+98.22 RT.	10'	20	10.0	0	BITUMINOUS	47.8	0	39.0	0	10	COMMERCIAL	0	0.5	T.C.E. REQD
86+43.20 RT.	10'	30	9.5	5.5	NONE	0	0	44.0	17	0	COMMERCIAL	0	1.5	T.C.E. REQD
88+90.94 LT.	10'	32	8.5	10.0	BITUMINOUS	123.5	0	44.0	0	0	PRIVATE	2.5	2.0	T.C.E. REQD
89+77.15 RT.	10'	12	9.5	5.5	GRAVEL	0	20.0	0	0	0	PRIVATE	6.7	6.7	NONE
90+15.29 RT.	10'	17	9.5	0	GRAVEL	0	25.0	0	0	0	COMMERCIAL	2.9	3.6	NONE
92+60.88 RT.	10'	35	9.0	0	BITUMINOUS	60.4	0	44.0	7	0	COMMERCIAL	3.1	7.8	T.C.E. REQD
93+33.37 RT.	10'	30	4.5 - 6.5	1.5 - 6.0	BITUMINOUS	62.7	0	37.0	7	0	COMMERCIAL			
						928.3	45.0	604.5	72	19				

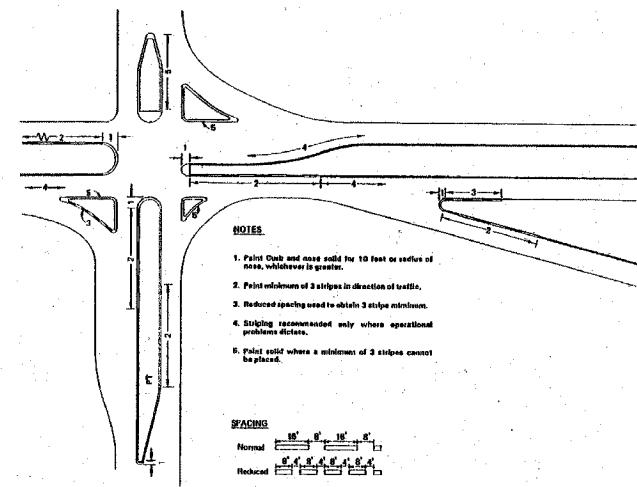
T.C.E. = TEMPORARY CONSTRUCTION EASEMENT



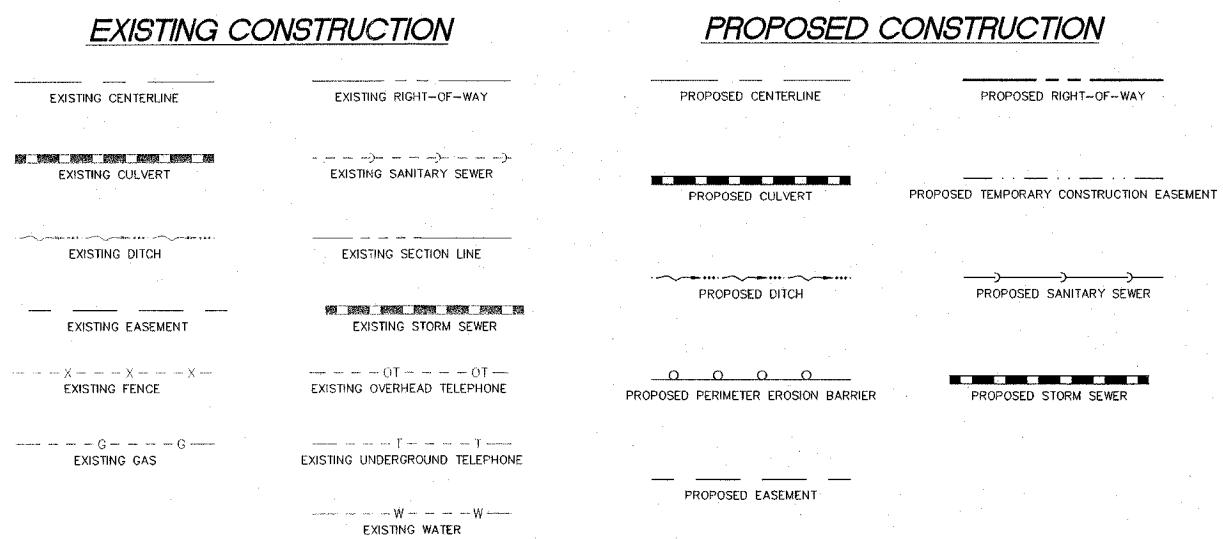
**STAGE 1 CONSTRUCTION DETAIL STA. 82+34.02 TO STA. 91+03.42**  
 NO SCALE



**STAGE 2 CONSTRUCTION DETAIL STA. 82+34.02 TO STA. 91+03.42**  
 NO SCALE



**CURB MARKING DETAIL**



I:\projects\WOOD RIVER\DWG\B-constdet2.dwg, 2/20/07 12:39:34 PM, klemm, 1:10