

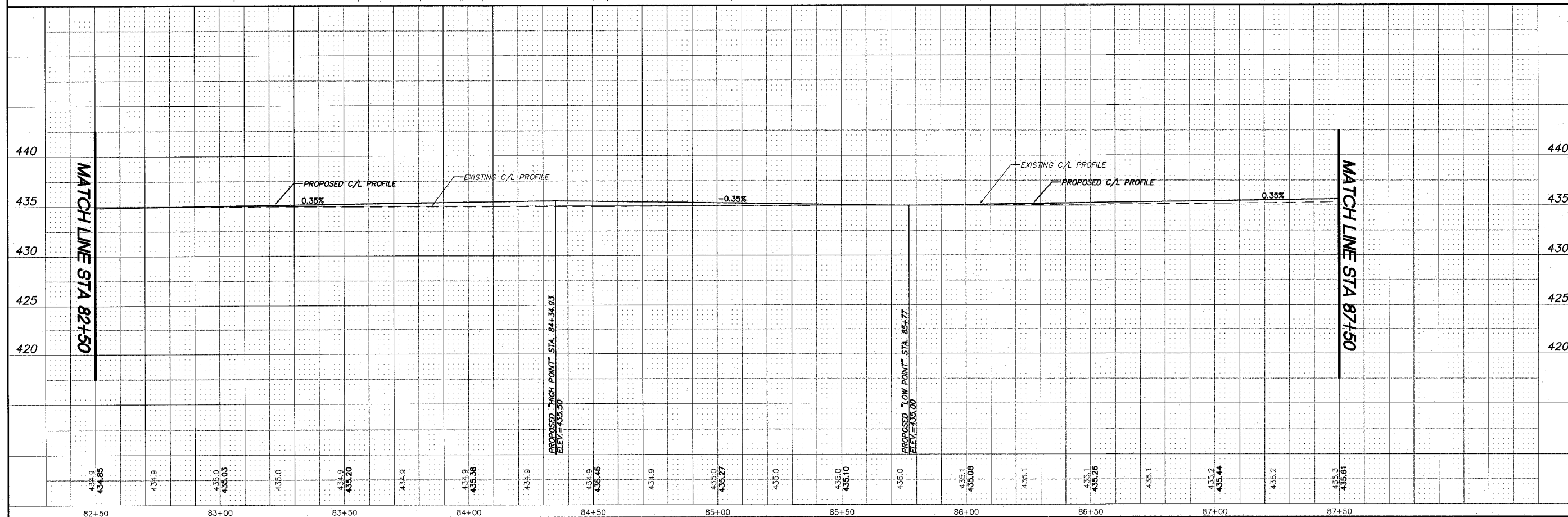
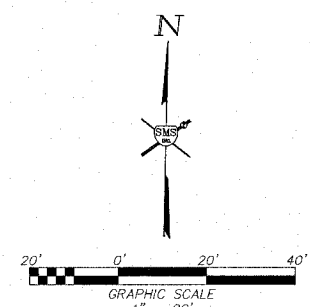
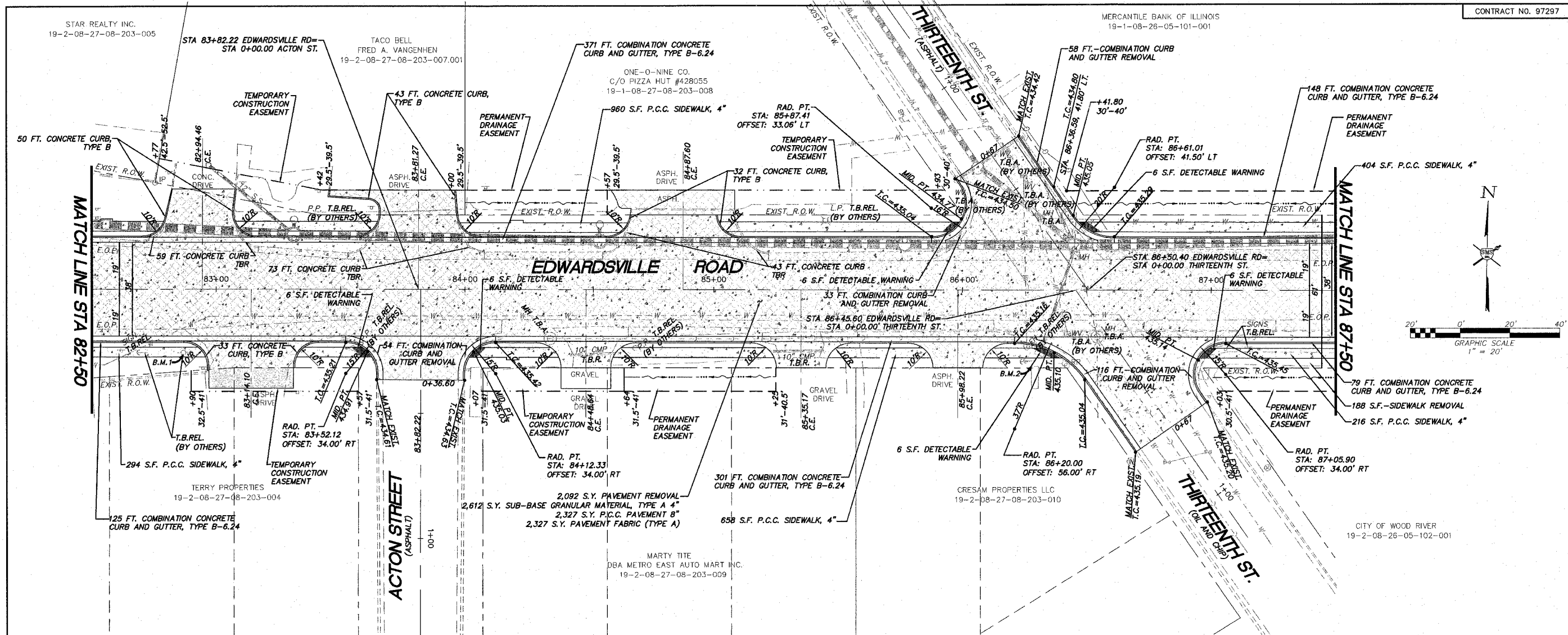
STAR REALTY INC.
19-2-08-27-08-203-005

TACO BELL
FRED A. VANGENHEN
19-2-08-27-08-203-007.001

ONE-O-NINE CO.
C/O PIZZA HUT #428055
19-1-08-27-08-203-008

MERCANTILE BANK OF ILLINOIS
19-1-08-26-05-101-001

CONTRACT NO. 97297



REVISIONS

SMS Sheppard, Morgan & Schwaab, Inc.
CONSULTING ENGINEERS AND LAND SURVEYORS
215 Main Street, P.O. Box E, Wood River, IL 62092 618/662-9755 Email: mail@smsmfg.com
10 Central Industrial Drive, Carmel, IN 46034 818/877-9100 Email: mail@smsmfg.com
DESIGN FIRM # 184-000992

ENGINEERS

EDWARDSVILLE ROAD PHASE II (FAU 8980)
SECTION 05-00043-02-WR
WOOD RIVER, ILLINOIS
PLAN PROFILE

DWG. NO.
Edwardsville road phs II PP4.dwg
REF. BK. PG.
JOB NO. 286514
DISH. BY: CLA
DWN. BY: CDP-jmk
CHK. BY: JHH
DATE: JANUARY, 2007
SCALE: HORZ: 1"=20'
VERT: 1"=5'
SHEET 15 OF 31

I:\land projects\WOOD RIVER PW (286514)\p4\Edwardsville road phs II PP4.dwg 2/21/2007 11:33:17 AM jhamesy, 1:20