

STATE OF ILLINOIS
DEPARTMENT OF TRANSPORTATION
DIVISION OF HIGHWAYS

ROUTE	SECTION	COUNTY	TOTAL SHEETS	SHEET NO.
Cy 8	05-00126-00-RS	Marion	3	1

FAS 2719 CONTRACT NO: 97307 FEDERAL AID PROJECT

INDEX OF SHEETS

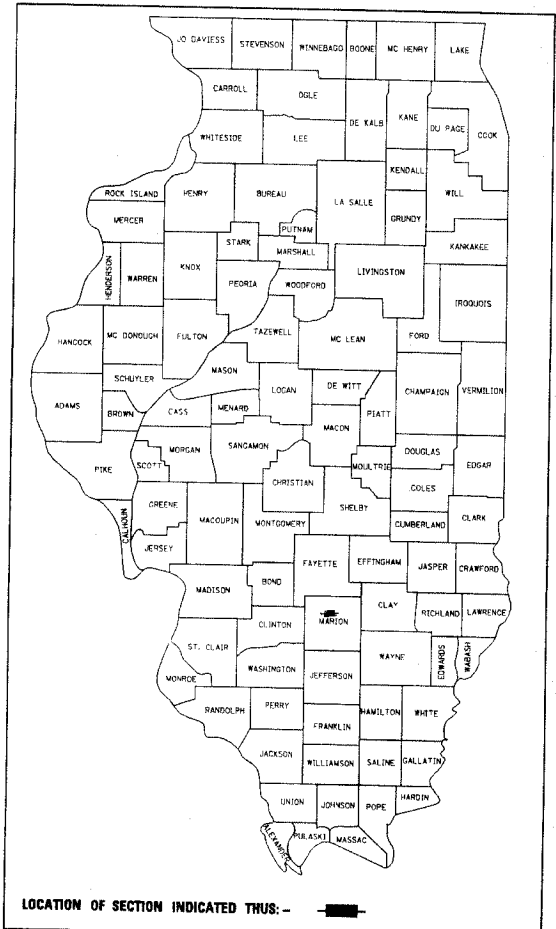
COVER SHEET	1
SUMMARY OF QUANTITIES, GENERAL NOTES, SCHEDULES AND UTILITIES	2
TYPICAL SECTIONS AND DETAILS	3

**PROPOSED LOCAL AGENCY
FEDERAL-AID SECONDARY PROJECT**

STANDARDS

- 000001-04 STANDARD SYMBOLS, ABBREVIATIONS AND PATTERNS
- 701301-02 LANE CLOSURE, 2L, 2W, SHORT TIME OPERATIONS
- 701306-01 LANE CLOSURE, 2L, 2W, SLOW MOVING OPERATIONS-DAY ONLY FOR SPEEDS >45 MPH
- 701311-02 LANE CLOSURE, 2L, 2W, SLOW MOVING OPERATIONS-DAY ONLY
- 702001-06 TRAFFIC CONTROL DEVICES
- 780001-01 TYPICAL PAVEMENT MARKINGS

ROUTE FAS 2719
SECTION 05-00126-00-RS
PROJECT RS-2719(104)
MARION COUNTY
C-98-335-07



THE ACCEPTANCE OF THIS PROJECT IS BASED ON THE LOCAL AGENCY PAVEMENT PRESERVATION (LAPP) POLICIES ON THE COUNTY HIGHWAY SYSTEM.

DISTRICT ENGINEER OF LOCAL ROADS AND STREETS

STATE OF ILLINOIS
DEPARTMENT OF TRANSPORTATION
DIVISION OF HIGHWAYS

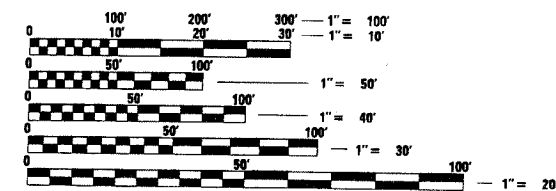
APPROVED 03-30, 2007
James E. Armstrong
MARION COUNTY, COUNTY ENGINEER

PASSED April 4, 2007
James E. Armstrong
DISTRICT EIGHT ENGINEER OF LOCAL ROADS & STREETS

RELEASED FOR BID
BASED ON LIMITED REVIEW 4-4, 2007
Mary C. Lomas
DEPUTY DIRECTOR OF HIGHWAYS, REGION FIVE ENGINEER

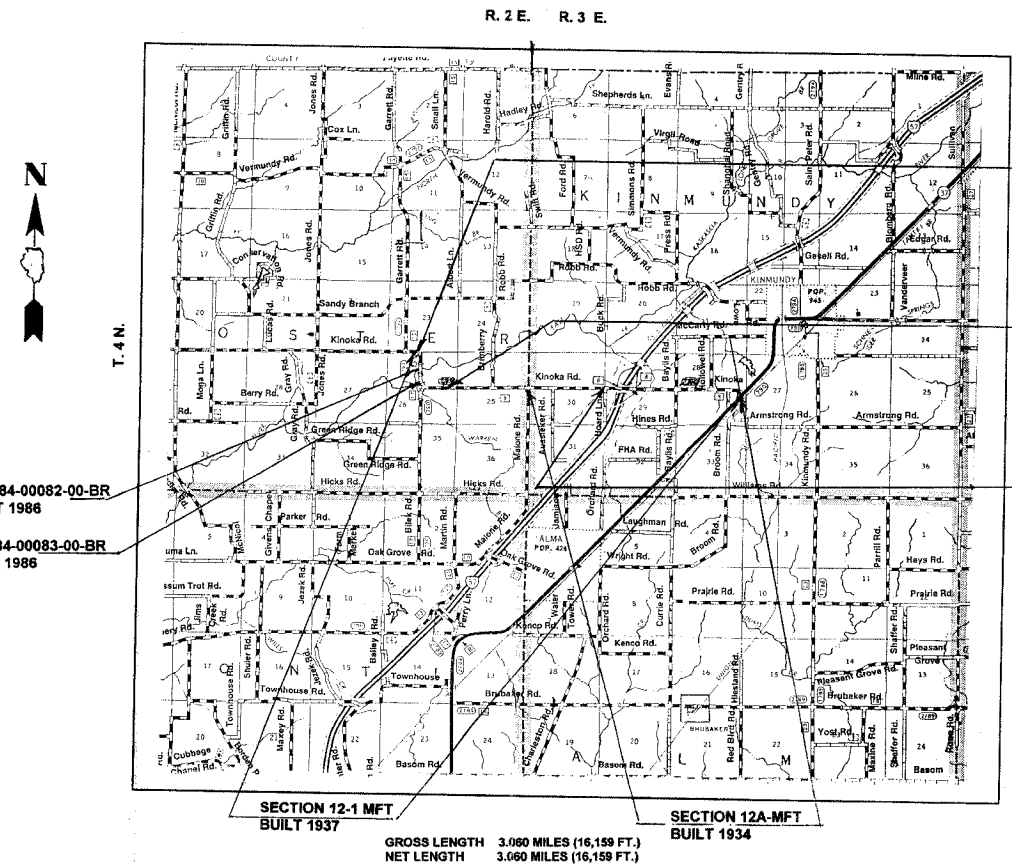
ROADWAY DESIGNATION

ROADWAY CLASSIFICATION: RURAL MAJOR COLLECTOR
CURRENT ADT: 800
DESIGN SPEED: 50 MPH



FULL SIZE PLANS HAVE BEEN PREPARED USING STANDARD ENGINEERING SCALES. REDUCED SIZED PLANS WILL NOT CONFORM TO STANDARD SCALES. IN MAKING MEASUREMENTS ON REDUCED PLANS, THE ABOVE SCALES MAY BE USED.

J.U.L.I.E.
JOINT UTILITY LOCATION INFORMATION FOR EXCAVATION
1-800-892-0123



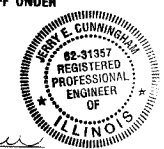
BEGIN SEC. 05-00126-00-RS
STA -5+39

EQUATION: 26+95 BACK
139+25 AHEAD

END SEC. 05-00126-00-RS
STA 10+00

THESE PLANS WERE PREPARED BY ME OR A FULL-TIME MEMBER OF MY STAFF UNDER MY PERSONAL SUPERVISION.

James E. Armstrong
COUNTY ENGINEER, MARION COUNTY
ILLINOIS LICENSED PROFESSIONAL ENGINEER
NO. 022-21257
LICENSE EXPIRES 11-30-07



GROSS LENGTH 3.060 MILES (16,159 FT.)
NET LENGTH 3.060 MILES (16,159 FT.)