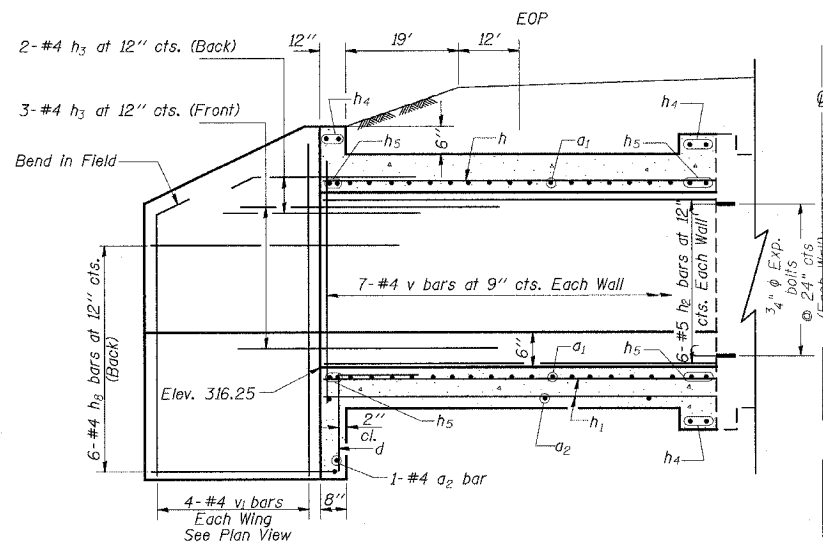


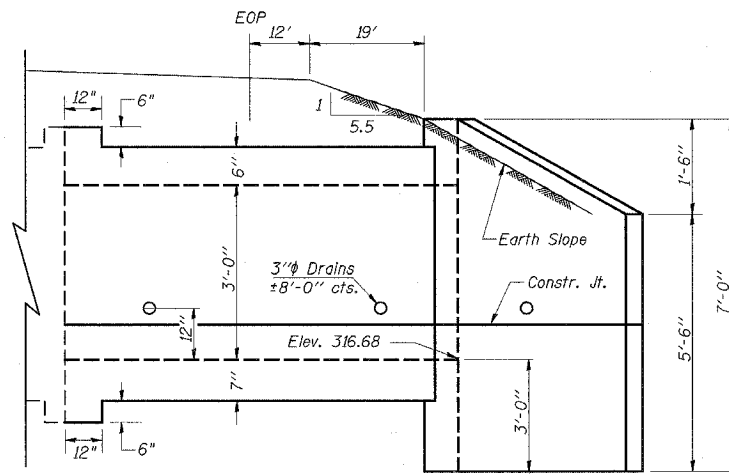
STATE OF ILLINOIS
DEPARTMENT OF TRANSPORTATION

F.A.I. RTE	SECTION	COUNTY	TOTAL SHEETS	SHEET NO
57	77-G, 4-1, 4-2R5-2	PULASKI	52	50
STA.	TO STA.			
FED. ROAD DIST. NO.	ILLINOIS	FED. AID PROJECT		

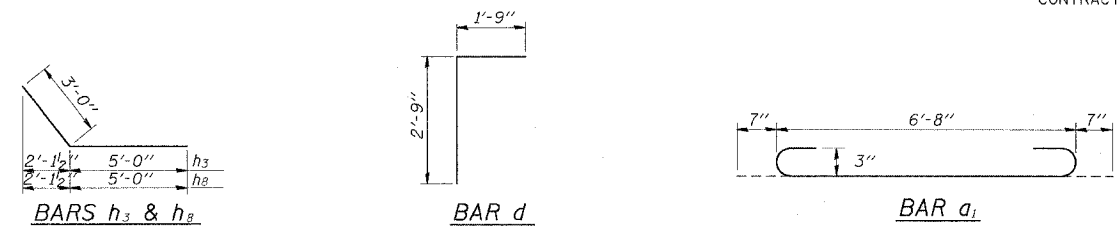
CONTRACT NO. 98829



HALF LONG SECTION



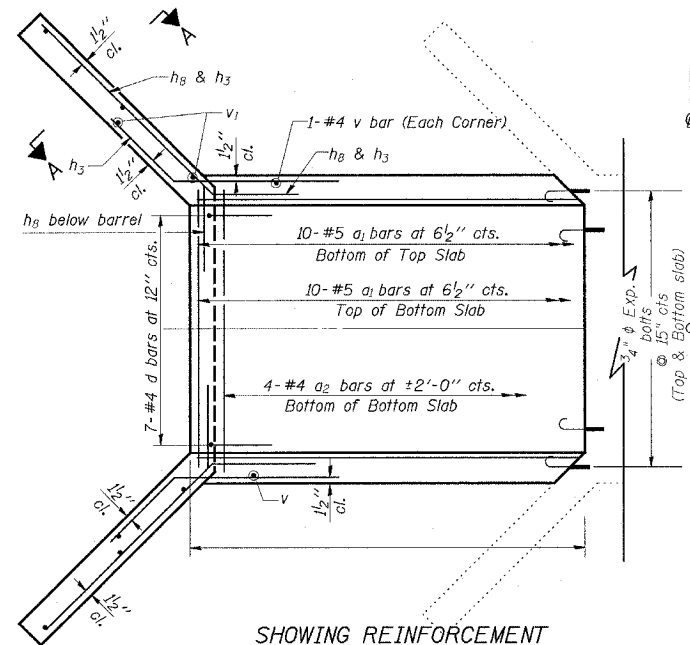
HALF ELEVATION



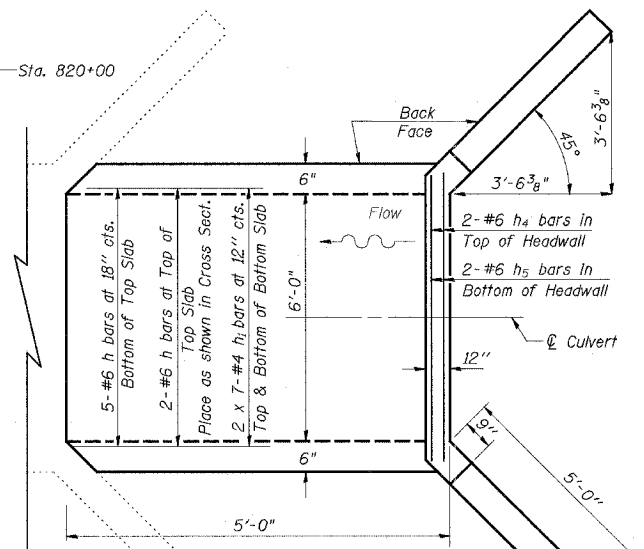
DESIGN STRESSES

$f_y = 60,000$ psi
 $f'_c = 3,500$ psi

LOADING HS 20-44 & ALT.

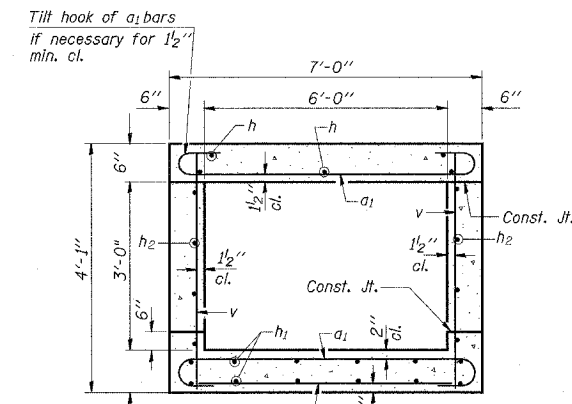


SHOWING REINFORCEMENT

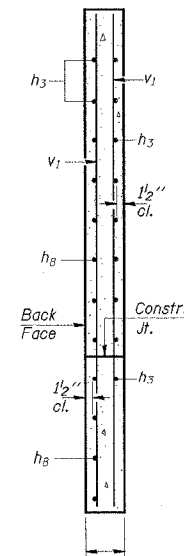


SHOWING OUTLINES

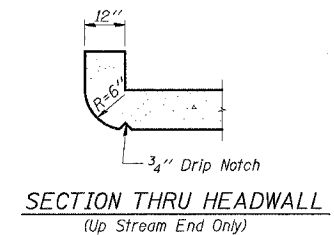
PLAN



SECTION THRU BARREL



SECTION A-A



SECTION THRU HEADWALL
(Up Stream End Only)

BILL OF MATERIAL

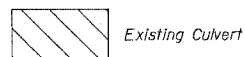
Bar	No.	Size	Length	Shape
a ₁	40	#5	7'-10"	U
a ₂	10	#4	6'-6"	U
d	14	#4	4'-6"	U
h	14	#6	4'-9"	U
h ₁	28	#4	4'-9"	U
h ₂	12	#5	4'-9"	U
h ₃	20	#4	8'-0"	U
h ₄	12	#6	6'-9 1/2"	U
h ₅	16	#6	7'-4 1/2"	U
h ₆	24	#4	8'-0"	U
v	32	#4	3'-10"	U
v ₁	16	#4	6'-9"	U

Concrete Box Culverts	Cu. Yd.	9.0
Reinforcement Bars	Pound	1350
3/4" Expansion Bolts	Each	28

NOTES

The entire barrel shall be poured monolithically with the wingwalls. Exposed edges shall be beveled 3/4". For backfilling and embankment, see Standard Specifications. Reinforcement Bars shall conform to the requirements of AASHTO M-31, M-42 or M-53, Grade 60. Bars indicated thus 12 x 4-#5 etc. indicates 12 lines of bars with 4 lengths per line. All construction joints shall be bonded. Expansion bolts shall consist of approved expansion anchors, providing minimum certified proof load = 4,080 lbs. and 3/4" x 12" hooked bolts. Hooked bolts shall extend a minimum of 9" into new concrete.

LEGEND



PLOT DATE = 2/21/2007
FILE NAME = s:\projects\98829\98829.dwg
PLOT SCALE = 1/8" = 1'-0"
USER NAME = shomahy

SSB-H-0 6-1-2000

DETAILS: BOX CULVERT EXTENSION STA 820+00

ILLINOIS DEPARTMENT OF TRANSPORTATION

BOX CULVERT EXTENSION

STATION 820+00

6' X 3', SKEW 0°

EXTEND 5'-0"