

F.A.I. RTE.	SECTION	COUNTY	TOTAL SHEETS	SHEET NO.
57	(X1-6-2)HBK	WILLIAMSON	272	20
STA. N/A		TO STA. N/A		
FED. ROAD DIST. NO. 9 ILLINOIS FED. AID PROJECT				

STRUCTURAL DESIGN INFORMATION
MORGAN AVE. - BRIDGE TO CARBON ST.

ROAD CLASSIFICATION: URBAN COLLECTOR

STRUCTURAL DESIGN TRAFFIC:
 PV = 5,730 SU = 88 MU = 29

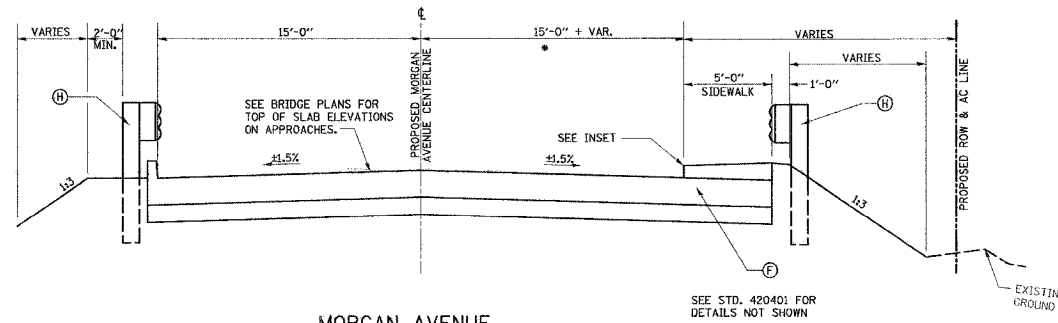
PERCENT OF STRUCTURAL DESIGN TRAFFIC IN DESIGN LANE
 P = 50% S = 5.0% M = 50%

MINIMUM SUBGRADE SUPPORT RATING: POOR

RIGID PAVEMENT DESIGN:
 8" P.C.C. PAVEMENT
 4" SUBBASE GRANULAR MATERIAL, TYPE A

LEGEND

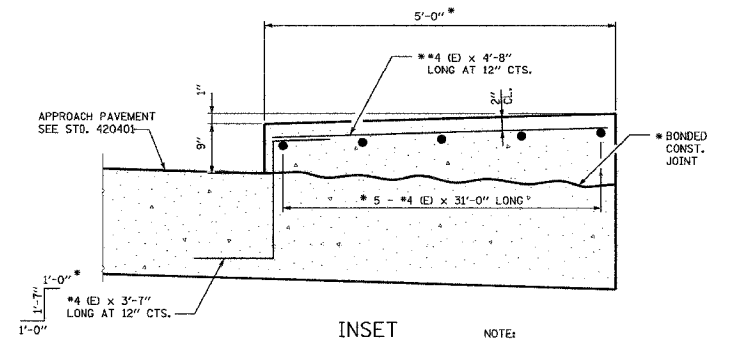
- (A) P.C.C. PAVEMENT, 8"
- (B) SUBBASE GRANULAR MATERIAL, TYPE A, 4"
- (C) B-6.24 CURB & GUTTER
- (D) M-6.06 CURB & GUTTER
- (E) P.C.C. SIDEWALK, 4"
- (F) BRIDGE APPROACH PAVEMENT (SPECIAL)
- (G) 4" MEDIAN P.C.C.
- (H) STEEL PLATE BEAM GUARDRAIL, TYP A



MORGAN AVENUE SECTION 4

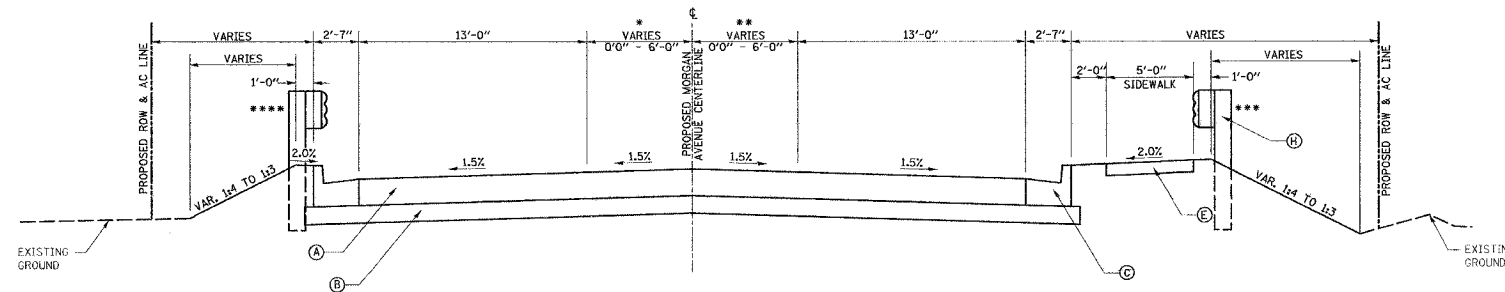
STA 32+55.25 TO STA 32+85.25
 STA 36+55.54 TO STA 36+85.54

* REMAINDER OF MEDIAN TAPER FROM PREVIOUS SECTION ENDS AT BK OF ABUTMENT STA. 32+85.21



* ADDITIONAL 5'-0" CONCRETE FOR WALKWAY, REINFORCING BARS AND BONDED CONSTRUCTION JOINT INCLUDED IN COST OF BRIDGE APPROACH PAVEMENT (SPECIAL)

NOTE: REINFORCEMENT DESIGNATED (E) SHALL BE EPOXY COATED.



MORGAN AVENUE SECTION 5

STA 36+85.54 TO STA 42+07.03 *****
 * 6'-0" WIDTH @ STA 39+67.85
 ** 6'-0" WIDTH @ STA 39+30.08
 *** GUARDRAIL ENDS AT STA. 39+03.43 LT. AND STA. 39+17.46 RT.
 ***** STA. 36+85.54 TO STA. 37+85.54 BRIDGE APPROACH PAVEMENT CONNECTOR (PCC) SEE STANDARD 420401

REVISIONS	
NAME	DATE

ILLINOIS DEPARTMENT OF TRANSPORTATION
TYPICAL SECTIONS - MORGAN AVENUE
 MORGAN AVENUE INTERCHANGE
 FAI ROUTE 57 WITH FAU ROUTE 9718
 WILLIAMSON COUNTY

SCALE: NONE
 DATE: 3-19-2007

DRAWN BY: DEH
 CHECKED BY: RD