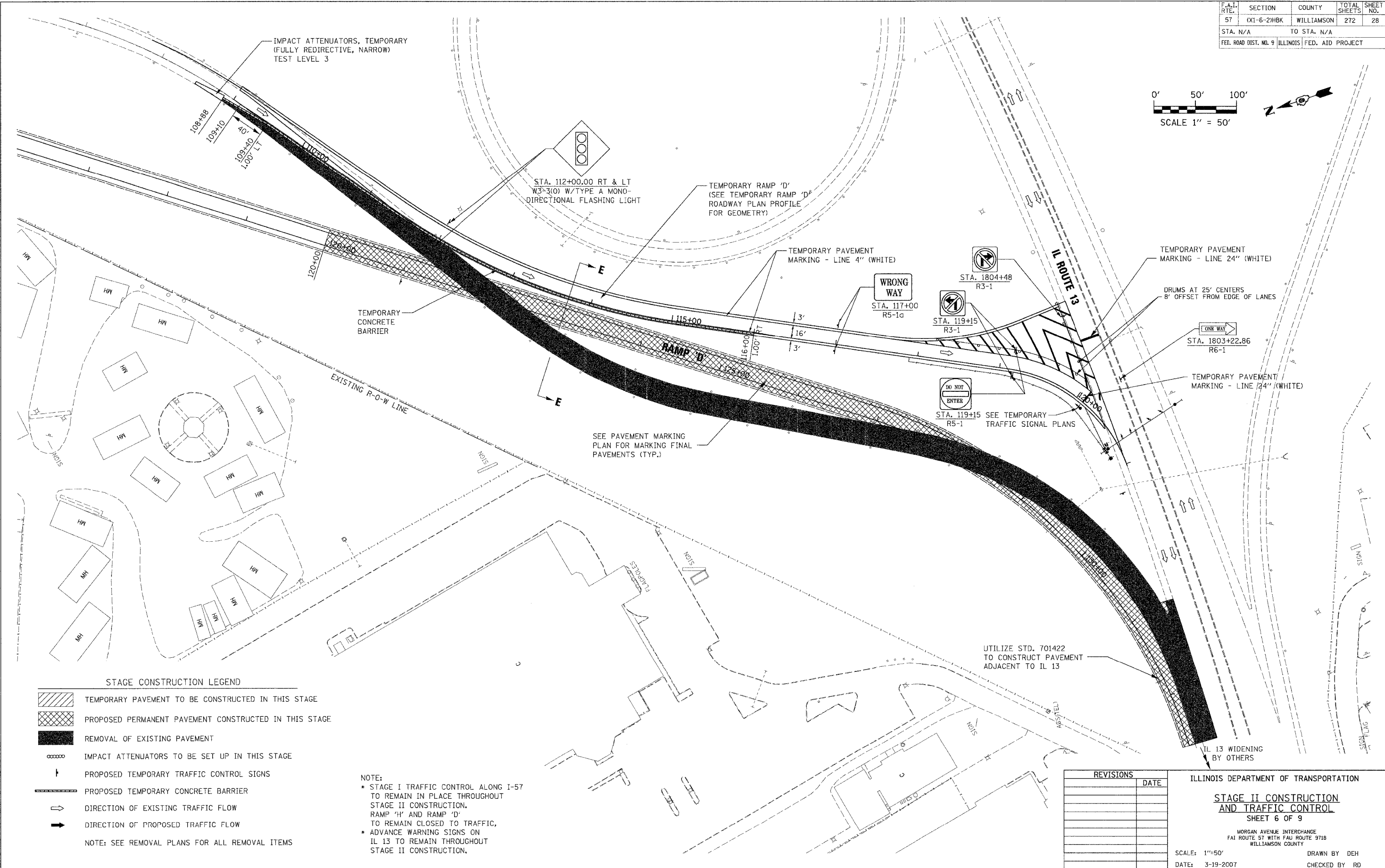
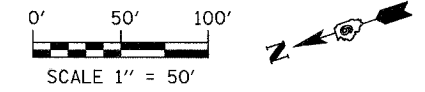


F.A.I. SECTION	COUNTY	TOTAL SHEETS	SHEET NO.
57 (X1-6-2)HBK	WILLIAMSON	272	28
STA. N/A	TO STA. N/A		
FED. ROAD DIST. NO. 9 ILLINOIS FED. AID PROJECT			



STAGE CONSTRUCTION LEGEND

- TEMPORARY PAVEMENT TO BE CONSTRUCTED IN THIS STAGE
 - PROPOSED PERMANENT PAVEMENT CONSTRUCTED IN THIS STAGE
 - REMOVAL OF EXISTING PAVEMENT
 - IMPACT ATTENUATORS TO BE SET UP IN THIS STAGE
 - PROPOSED TEMPORARY TRAFFIC CONTROL SIGNS
 - PROPOSED TEMPORARY CONCRETE BARRIER
 - DIRECTION OF EXISTING TRAFFIC FLOW
 - DIRECTION OF PROPOSED TRAFFIC FLOW
- NOTE: SEE REMOVAL PLANS FOR ALL REMOVAL ITEMS

NOTE:
 * STAGE I TRAFFIC CONTROL ALONG I-57 TO REMAIN IN PLACE THROUGHOUT STAGE II CONSTRUCTION. RAMP 'H' AND RAMP 'D' TO REMAIN CLOSED TO TRAFFIC, ADVANCE WARNING SIGNS ON IL 13 TO REMAIN THROUGHOUT STAGE II CONSTRUCTION.

REVISIONS	DATE

ILLINOIS DEPARTMENT OF TRANSPORTATION

STAGE II CONSTRUCTION AND TRAFFIC CONTROL

SHEET 6 OF 9

MORGAN AVENUE INTERCHANGE
 FAU ROUTE 57 WITH FAU ROUTE 9718
 WILLIAMSON COUNTY

SCALE: 1"=50'
 DATE: 3-19-2007

DRAWN BY DEH
 CHECKED BY RD

PLOT DATE = 3/19/2007
 FILE NAME = P:\046808\98994\046808.dgn
 PLOT SCALE = BR/2000 / 1 IN.
 USER NAME = chesmar