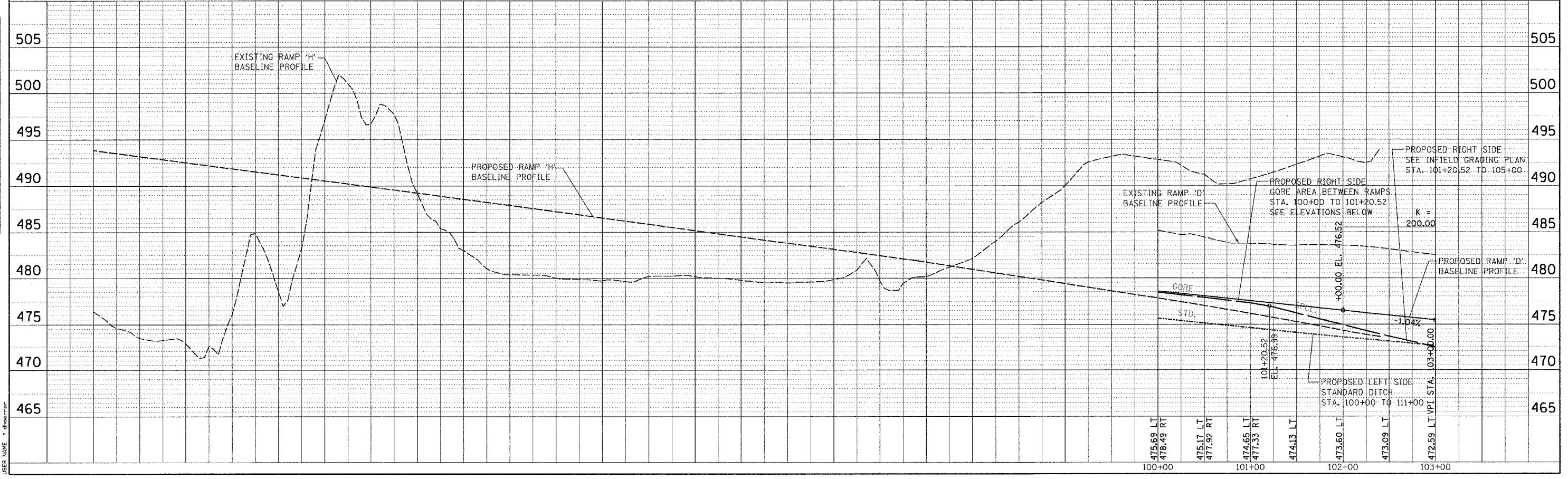
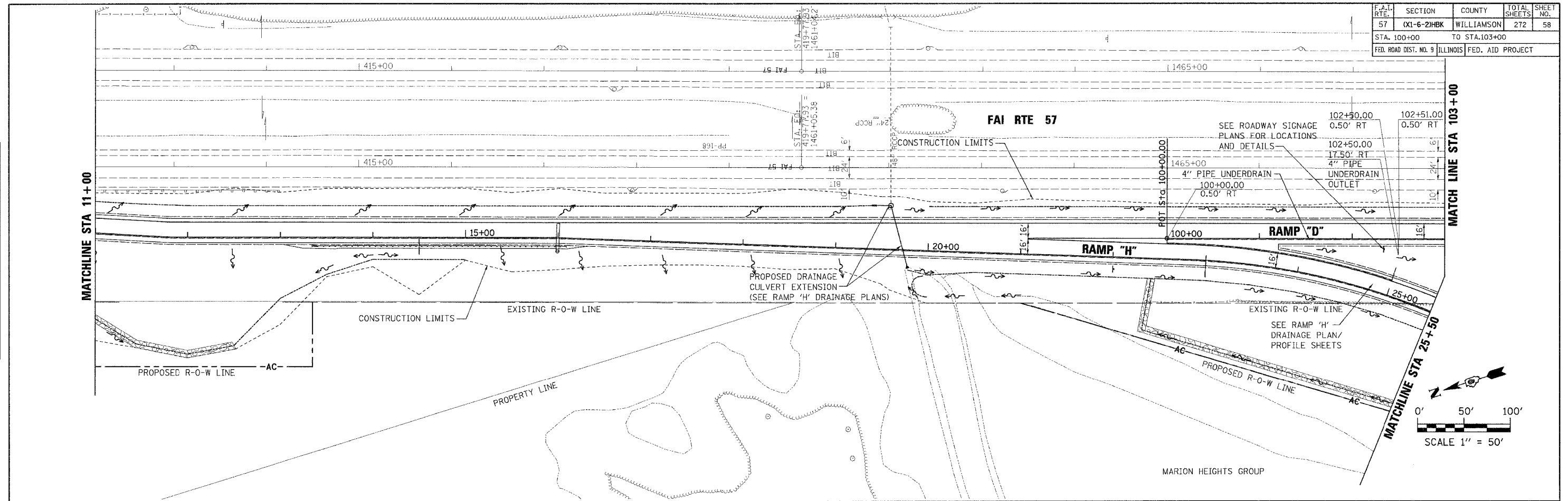


F.A.I. RTE.	SECTION	COUNTY	TOTAL SHEETS	SHEET NO.
57	0X1-6-2HKB	WILLIAMSON	272	58
STA. 100+00		TO STA. 103+00		
FED. ROAD DIST. NO. 9		ILLINOIS FED. AID PROJECT		

DATE	BY	REVISION

DATE	BY	REVISION

PLOT DATE = 3/21/2007
 FILE NAME = P:\06060\06060.dgn
 PLOT SCALE = 50.0000 / IN.
 USER NAME = chadman



RAMP "D" DRAINAGE PLAN & PROFILE STA 100+00 TO 103+00