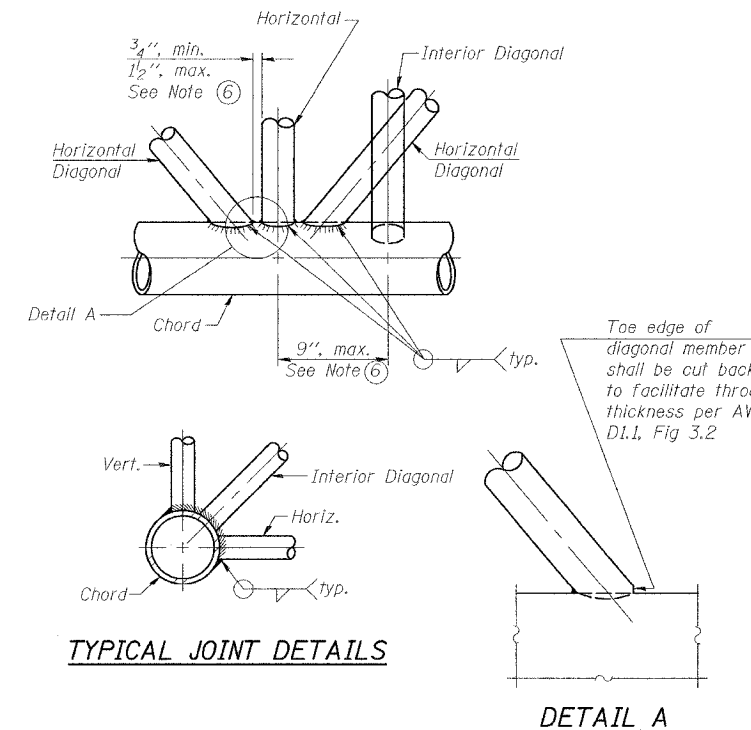
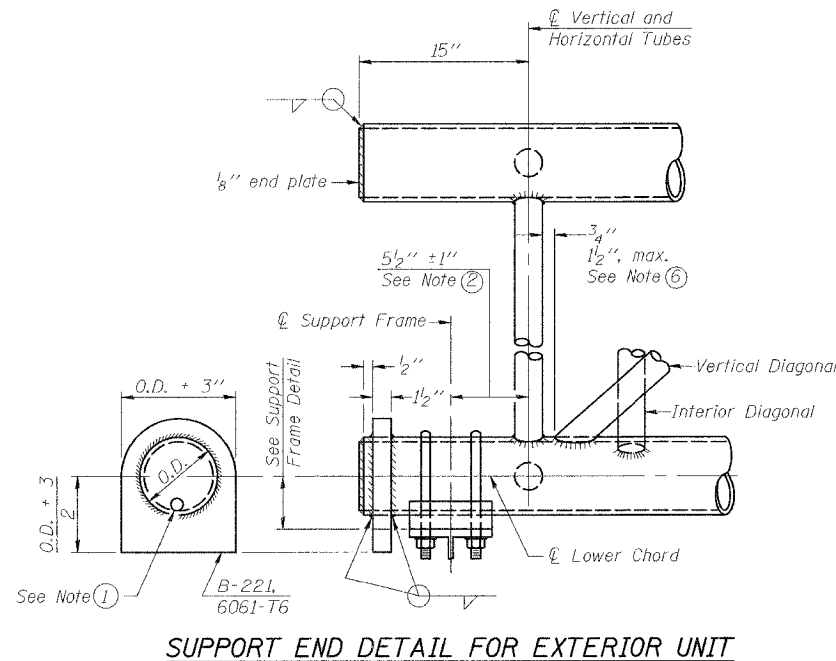
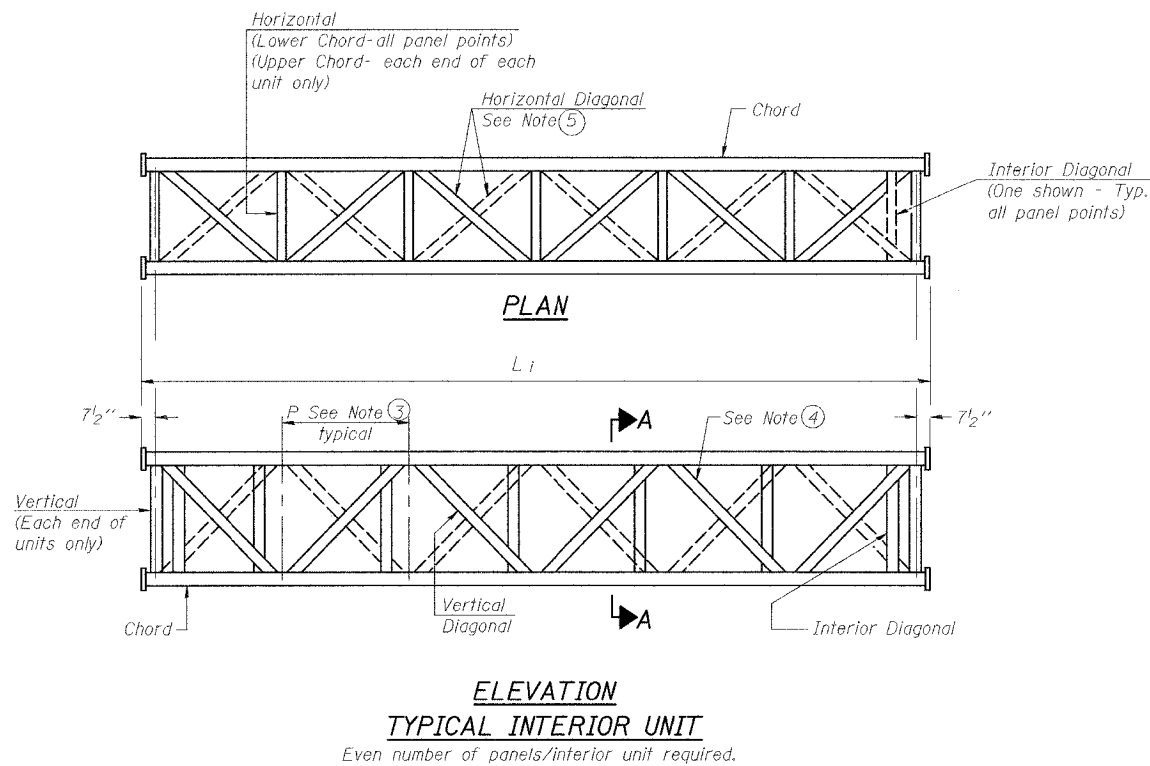
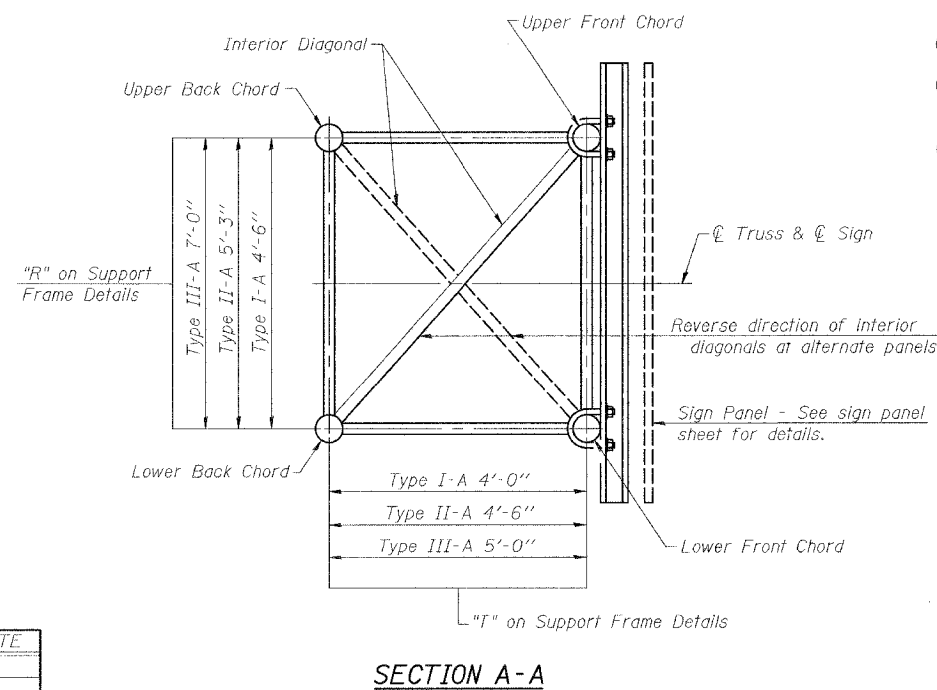
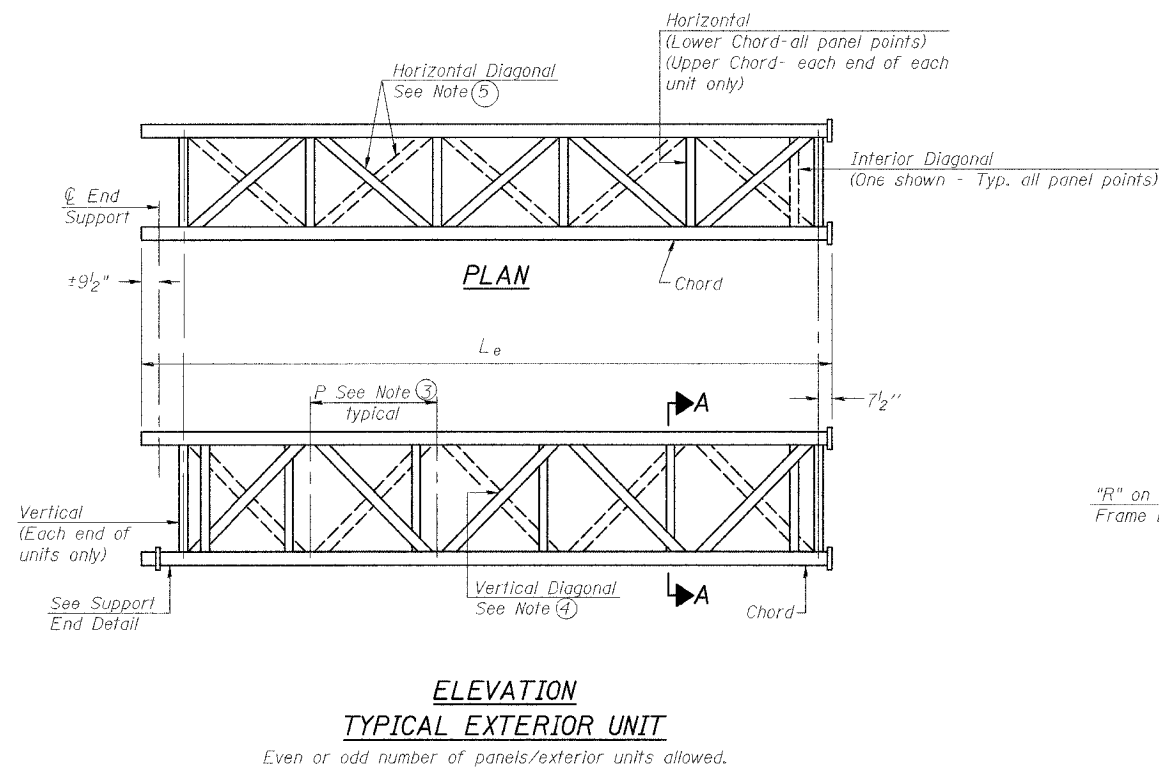


F.A.I. RTE.	SECTION	COUNTY	TOTAL SHEETS	SHEET NO.
57	0X1-6-2HKB	WILLIAMSON	272	108
STA.	TO STA.			
FED. ROAD DIST. NO. 9	ILLINOIS	FED. AID PROJECT		



- NOTES**
- Contractor may alternatively use standard aluminum drive-fit cap to close end. 1/2" ϕ drain hole in end plate/drive-fit cap. (Typ. at ends of all chords)
 - 5 1/2" end dimension may vary by $\pm 1"$ to provide uniform panel spacing (P).
 - Panel spacing (P) shall be uniform for entire truss and between 4'-0" and 5'-0" for Type I-A or 4'-0" and 5'-6" for Types II-A and III-A.
 - Vertical Diagonals in front and back face shall alternate.
 - Hidden lines show wind bracing alternates direction between planes of top and bottom chords.
 - All diagonals shall be detailed for minimum offset from the panel point based on the following: Offset shall be such as to provide a 3/4" minimum to 1 1/2" maximum clearance between any diagonal and any horizontal or vertical member, and to provide clearance for U-bolt connections of signs or walkway brackets.



NUMBER	REVISION	DATE

ILLINOIS DEPARTMENT OF TRANSPORTATION
**OVERHEAD SIGN STRUCTURES
 ALUMINUM TRUSS DETAILS
 FOR TRUSS TYPES I-A, II-A AND III-A**

MORGAN AVENUE INTERCHANGE
 FAI ROUTE 57 WITH FAU ROUTE 9718
 WILLIAMSON COUNTY

SHEET 2 OF 11

SCALE: N/A DATE: 3-19-2007

PLOT DATE = 3/19/2007
 FILE NAME = P:\2006\98994\dm\4468620a-r-d12.dgn
 PLOT SCALE = 8.125000 1/16"
 USER NAME = dhoerner