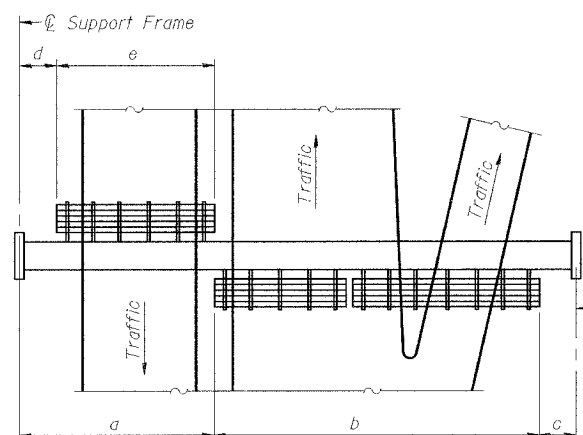
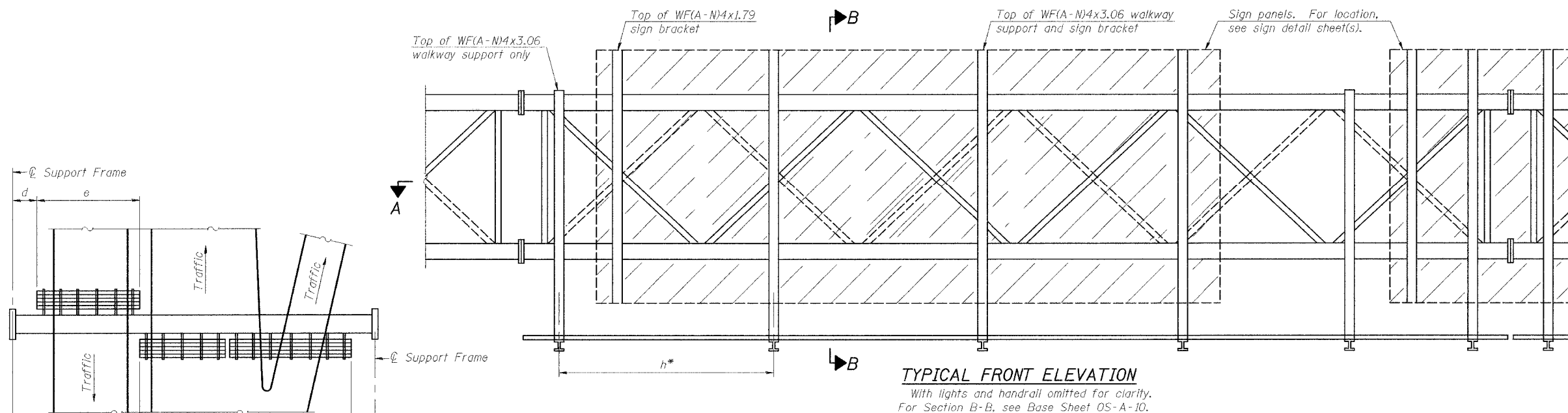
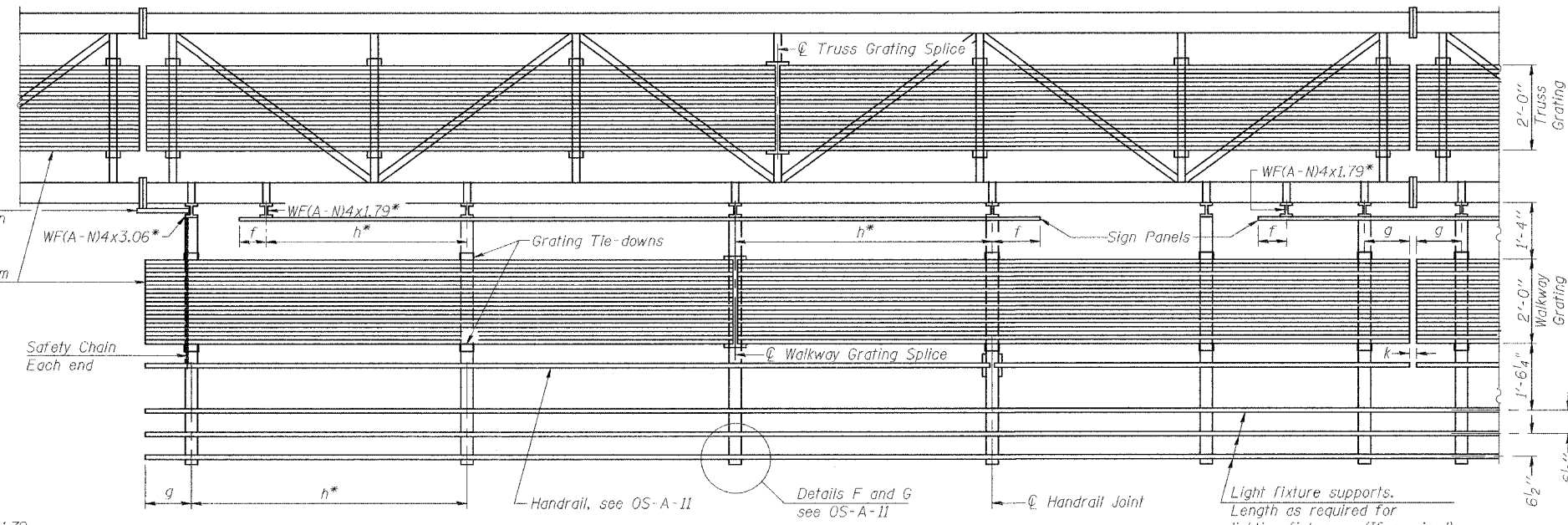


| | | | | |
|-----------------------|------------|------------------|--------------|-----------|
| F.A.I. RTE. | SECTION | COUNTY | TOTAL SHEETS | SHEET NO. |
| 57 | OX1-6-2HKB | WILLIAMSON | 272 | 113 |
| STA. | TO STA. | | | |
| FED. ROAD DIST. NO. 9 | ILLINOIS | FED. AID PROJECT | | |



PLAN WALKWAY AND HANDRAIL SKETCH
(Road plan beneath truss varies)



TYPICAL FRONT ELEVATION
With lights and handrail omitted for clarity.
For Section B-B, see Base Sheet OS-A-10.

SECTION A-A

Handrail and walkway shall span a minimum of three brackets between splices and/or gap joints. Place all sign and walkway brackets as close to panel points as practical. Handrail joints, grating, and light support splices placed as needed.

Truss grating to facilitate inspection shall run full length (center to center of support frames) ±12" on overhead trusses. Cost of truss grating is included in "Overhead Sign Structure".

BRACKET TABLE

| Sign Width | | Number Brackets Required |
|--------------|-----------------------|--------------------------|
| Greater Than | Less Than or Equal To | |
| | 8'-0" | 2 |
| 8'-0" | 14'-0" | 3 |
| 14'-0" | 20'-0" | 4 |
| 20'-0" | 26'-0" | 5 |
| 26'-0" | 32'-0" | 6 |

WF(A-N)4x1.79 or WF(A-N)4x3.06
ASTM B308, Alloy 6061-T6

** Alternate angle for safety chain attachment

Standard Aluminum Grating, see Details T and W

Safety Chain Each end

Notes:

- * Space walkway brackets WF(A-N)4x3.06 and sign brackets WF(A-N)4x1.79 for efficiency and within limits shown:
 - f = 12" maximum, 4" minimum (End of sign to center of nearest bracket)
 - g = 12" maximum, 4" minimum (End of walkway grating to center of nearest support bracket)
 - h = 6'-0" maximum (center to center of sign and/or walkway support brackets, WF(A-N)4x1.79 or WF(A-N)4x3.06)
 - k = 2" maximum gap between adjacent walkway grating sections and handrail ends
- ** If walkway bracket at safety chain location is behind sign, add angle to bracket, see Alternate Safety Chain Attachment on Base Sheet OS-A-11.

For Details T and W, Section B-B and Grating Splice Details see Base Sheet OS-A-10.
For Handrail Details see Base Sheet OS-A-11.

| Structure Number | Station | a | b | c | d | e | Walkway Grating and Handrail Lengths |
|------------------|-----------|---------|--------|--------|---|---|--------------------------------------|
| 9S1001057R055.5 | 348+50.00 | 36'-10" | 37'-0" | 22'-2" | - | - | 37'-0" |
| 9S1001057R054.5 | 403+52.04 | 20'-4" | 57'-0" | 9'-8" | - | - | 57'-0" |
| | | | | | | | |
| | | | | | | | |
| | | | | | | | |
| | | | | | | | |

| NUMBER | REVISION | DATE |
|--------|----------|------|
| | | |
| | | |
| | | |
| | | |
| | | |

ILLINOIS DEPARTMENT OF TRANSPORTATION

OVERHEAD SIGN STRUCTURES ALUMINUM WALKWAY DETAILS

MORGAN AVENUE INTERCHANGE
FAI ROUTE 57 WITH FAI ROUTE 9718
WILLIAMSON COUNTY

SHEET 7 OF 11

SCALE: N/A DATE: 3-19-2007

PLOT DATE = 3/29/2007
 PLOT NAME = P:\Projects\057R055.dgn
 PLOT SCALE = 841.288000
 USER NAME = dhsener