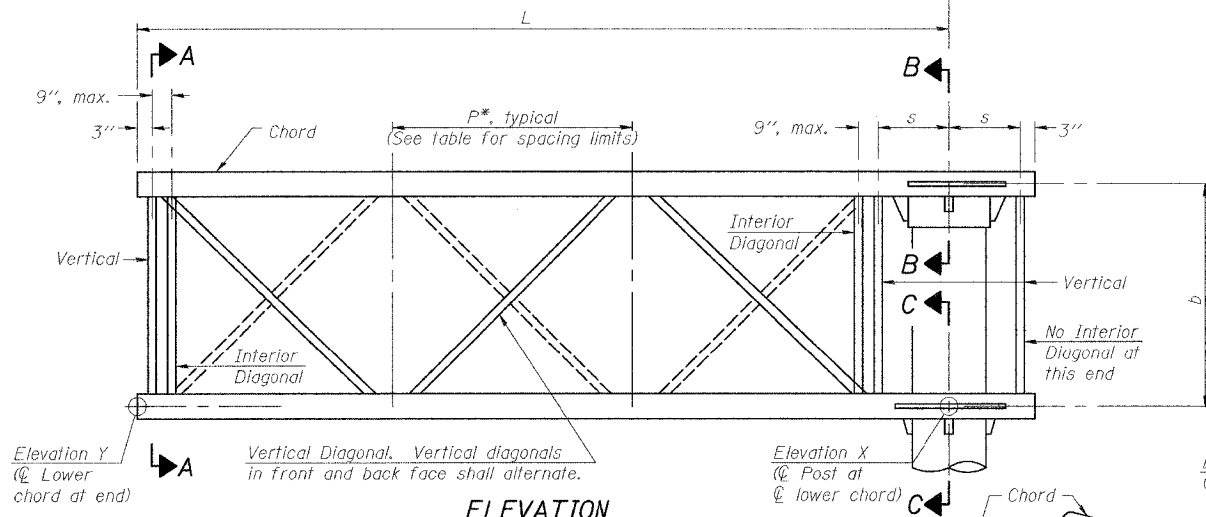
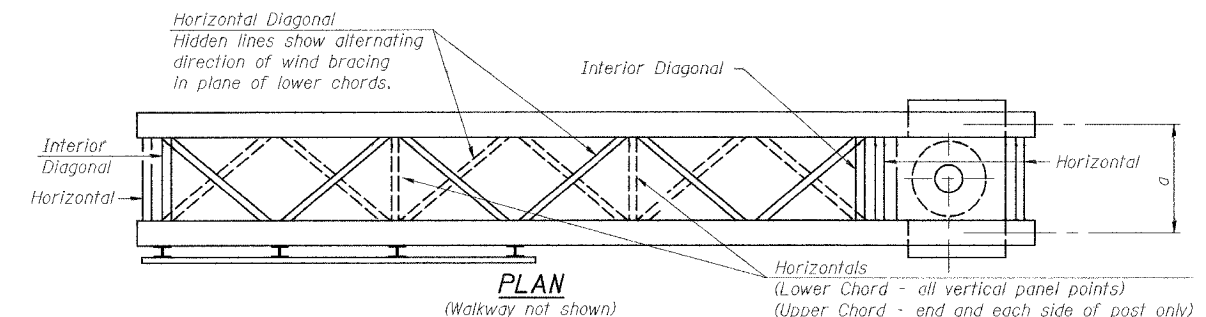
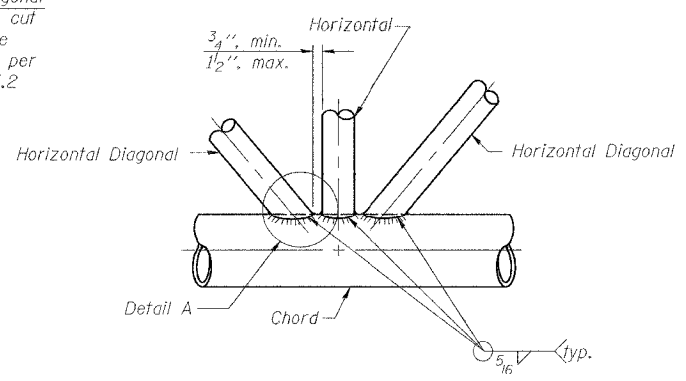
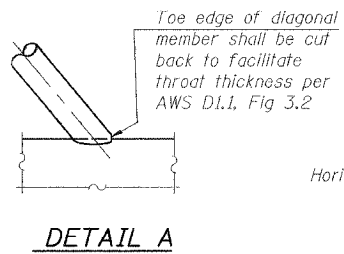
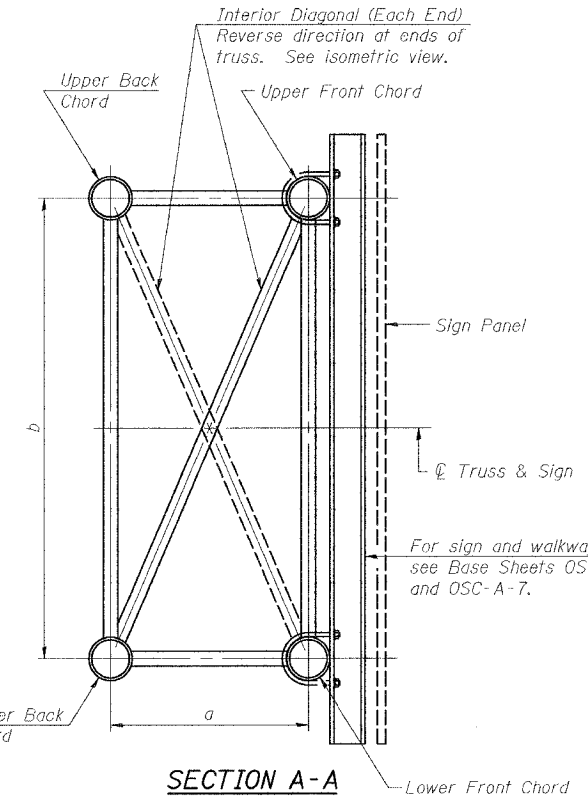


F.A.I. RTE.	SECTION	COUNTY	TOTAL SHEETS	SHEET NO.
57	0X1-6-2H8K	WILLIAMSON	272	119
STA. TO STA.		FED. ROAD DIST. NO. 9 ILLINOIS FED. AID PROJECT		

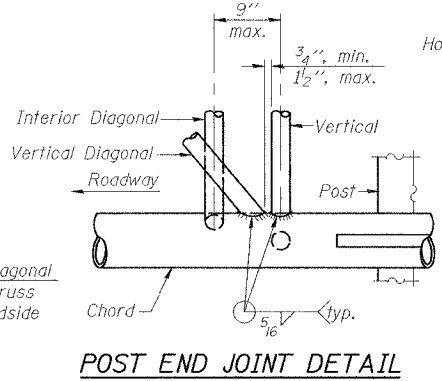


TYPICAL TRUSS UNIT
For Section B-B and Section C-C, see Base Sheet OSC-A-3.



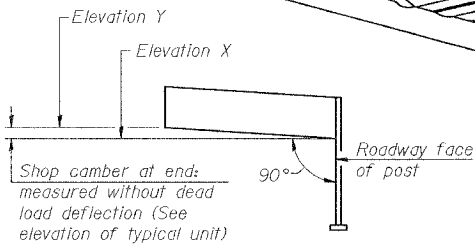
Structure Number	Station	Truss Type	Design Length (L)	Number of Panels Per Unit	Panel Length (P)*
9C1001057R054.3	417+15.26	II-C-A	30'-0"	7	4'-0"

Note:
There are twice as many horizontal diagonals as there are vertical diagonals.

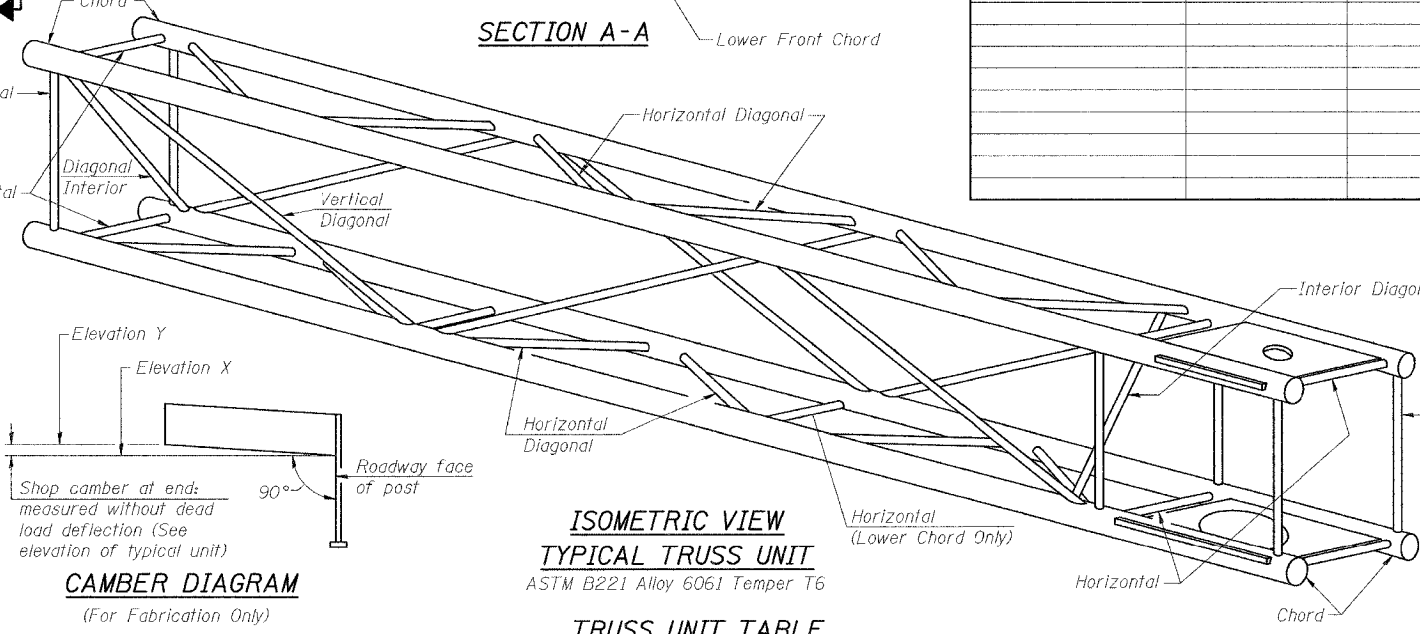


SHOP CAMBER TABLE

Unit Length (L)	Shop Camber at End
15'	1 1/2"
16'-17'	1 3/4"
18'-20'	2"
21'-22'	2 1/4"
23'-25'	2 1/2"
26'-27'	2 3/4"
28'-30'	3"
31'-32'	3 1/4"
33'-35'	3 1/2"
36'-37'	4"
38'-40'	4 1/2"



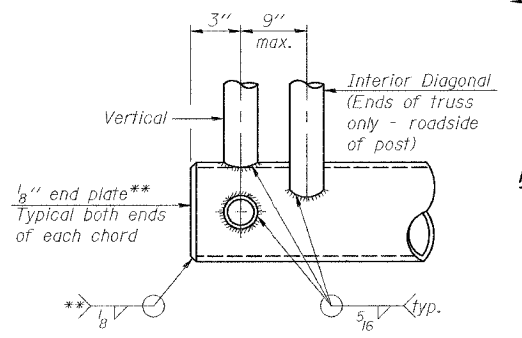
CAMBER DIAGRAM
(For Fabrication Only)



TRUSS UNIT TABLE
ASTM B221 Alloy 6061 Temper T6

Truss Type	Dimension "a"	Dimension "b"	Dimension "s"	Limits for Panel Spacing (P)*	Up. & Low. Chord		Verticals; Horizontals; Vertical, Horizontal, and Interior Diagonals	
					O.D.	Wall	O.D.	Wall
I-C-A	24"	54"	16"	36" min. to 48" max.	5"	5/16"	2 1/2"	5/16"
II-C-A	36"	66"	21"	42" min. to 54" max.	6 1/2"	5/16"	3 1/4"	5/16"
III-C-A (35' Max.)	36"	84"	21"	48" min. to 66" max.	7"	3/8"	3 1/2"	3/8"
III-C-A (>35' to 40')	36"	84"	21"	48" min. to 66" max.	8"	3/8"	3 1/2"	3/8"

*P = $\frac{L - S - 3''}{\# \text{ Panels}}$



CANTILEVER END JOINT DETAIL
** Contractor may alternatively use standard aluminum drive-fit cap to close ends.

NUMBER	REVISION	DATE

ILLINOIS DEPARTMENT OF TRANSPORTATION
CANTILEVER SIGN STRUCTURES TRUSS DETAILS
ALUMINUM TRUSS & STEEL POST
WORGAN AVENUE INTERCHANGE
FAI ROUTE 57 WITH FAU ROUTE 9718
WILLIAMSON COUNTY
SHEET 2 OF 9

PLOT DATE = 5/16/2007
 FILE NAME = P:\062007\062007.dgn
 PLOT SCALE = 821/8000 1/8" IN.
 USER NAME = dhoerner