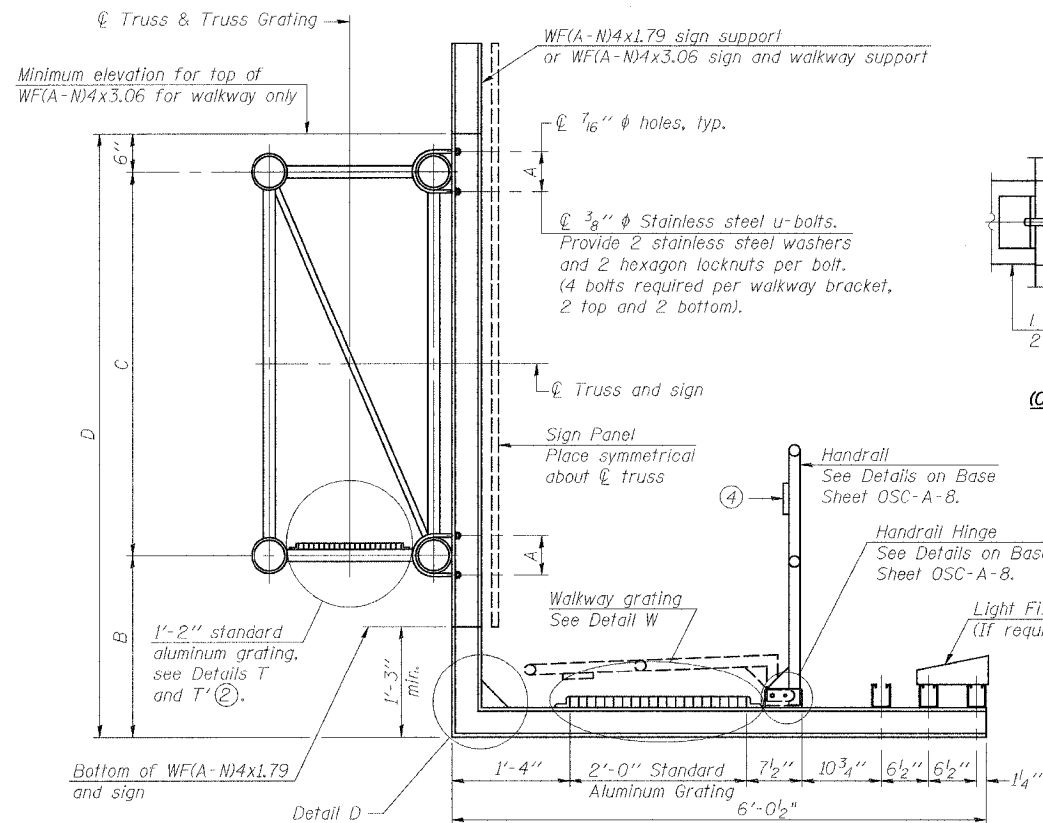
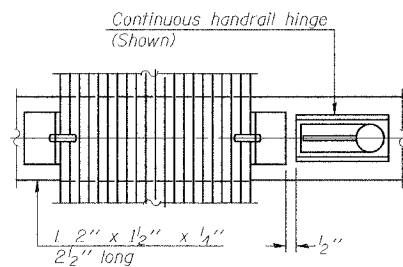


F.A.I. RTE.	SECTION	COUNTY	TOTAL SHEETS	SHEET NO.
57	OX1-6-21HBK	WILLIAMSON	272	124
STA.	TO STA.			
FED. ROAD DIST. NO. 9	ILLINOIS	FED. AID PROJECT		

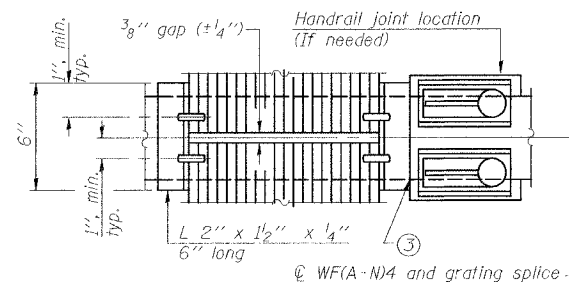


SECTION B-B

Sign shall be even with the top of the bracket, but it may extend no more than 6" above the top of the bracket for field adjustments.

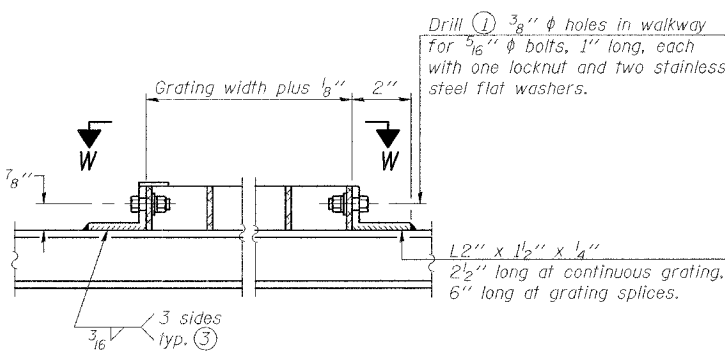


(CONTINUOUS WALKWAY GRATING)



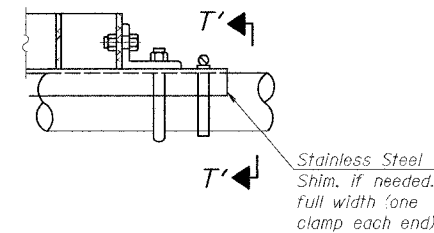
(AT WALKWAY GRATING SPLICE)

SECTION W-W



DETAIL W

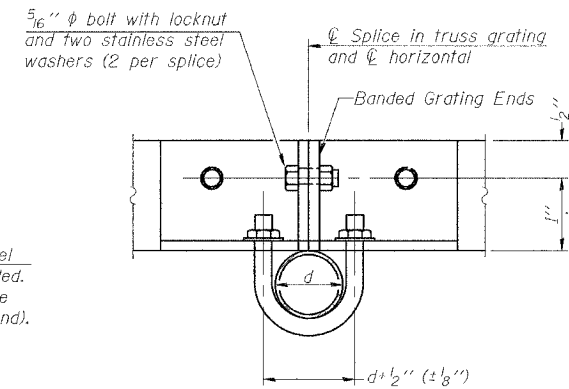
(Walkway grating)



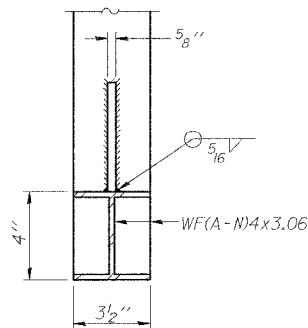
DETAIL T'

(Truss grating splice)

Details not shown same as Detail T. Alternate materials may be used subject to the Engineer's review and approval.

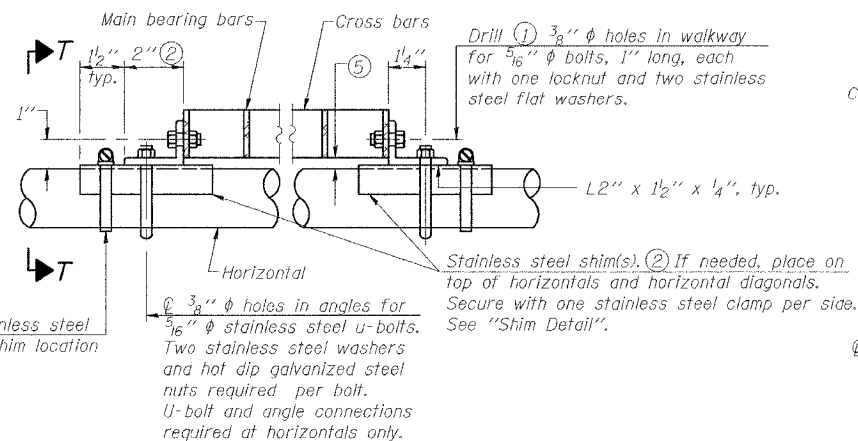


SECTION T'-T'



SECTION D-D

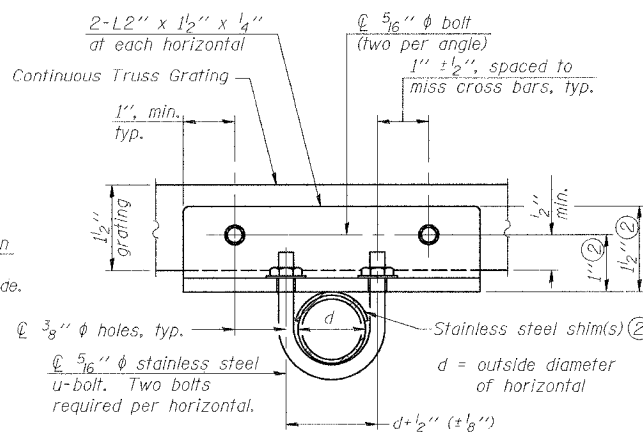
Screw type stainless steel tube clamp at shim location



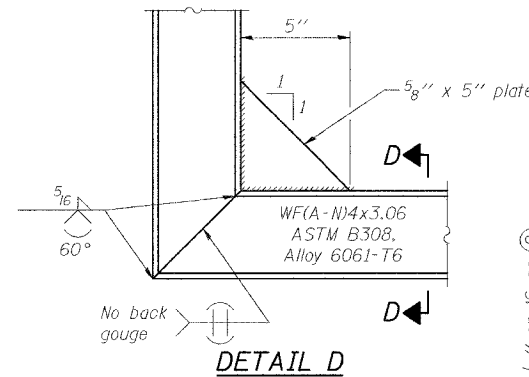
DETAIL T

(Continuous Truss grating)

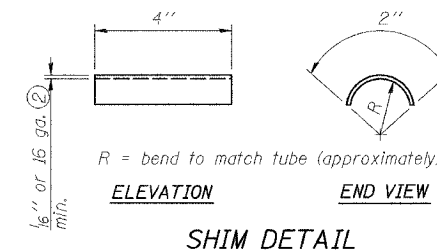
- Drilling holes in grating may be done in shop or field, based on Contractor's preference and subject to accurate alignment.
- Stainless steel shims shall be placed as shown in Detail T if needed to compensate for alignment variations between horizontal and diagonal pipes beyond adjustment provided by angles. Thicker shims may be used subject to shims performing properly.
- If Handrail Joint present, weld angle to WF(A-N)4 and 1/4 inch extension bars. (See Base Sheet OSC-A-8.)
- 1/8 inch x 1/2 inch x 2 inch welded to handrail posts to protect locations that contact grating.
- Tube to grating gap may vary from 0 to 1/2 inch, max. to align walkway, allow for camber, etc.



SECTION T-T



DETAIL D



SHIM DETAIL

Structure Number	Station	A	B	C	D
9C1001057R054.3	417+15.26	7"	6'-0"	5'-6"	12'-0"

NUMBER	REVISION	DATE

ILLINOIS DEPARTMENT OF TRANSPORTATION
**CANTILEVER SIGN STRUCTURES
 WALKWAY DETAILS
 ALUMINUM TRUSS & STEEL POST**

MORGAN AVENUE INTERCHANGE
 FAI ROUTE 57 WITH FAI ROUTE 971B
 WILLIAMSON COUNTY

SHEET 7 OF 9

SCALE: N/A DATE: 3-19-2007