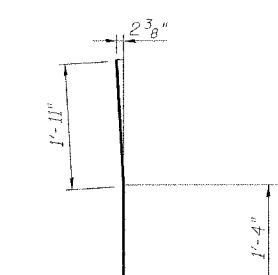
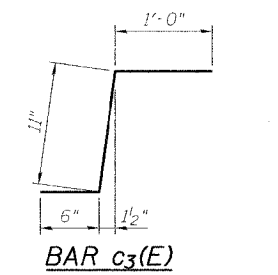
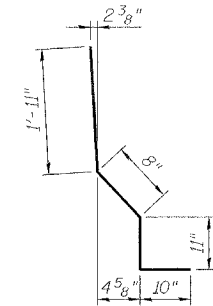
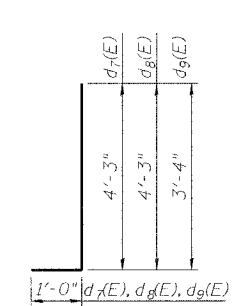
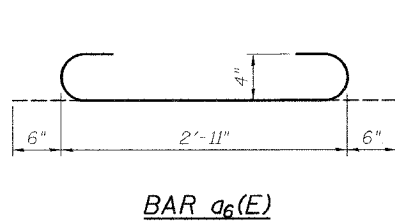
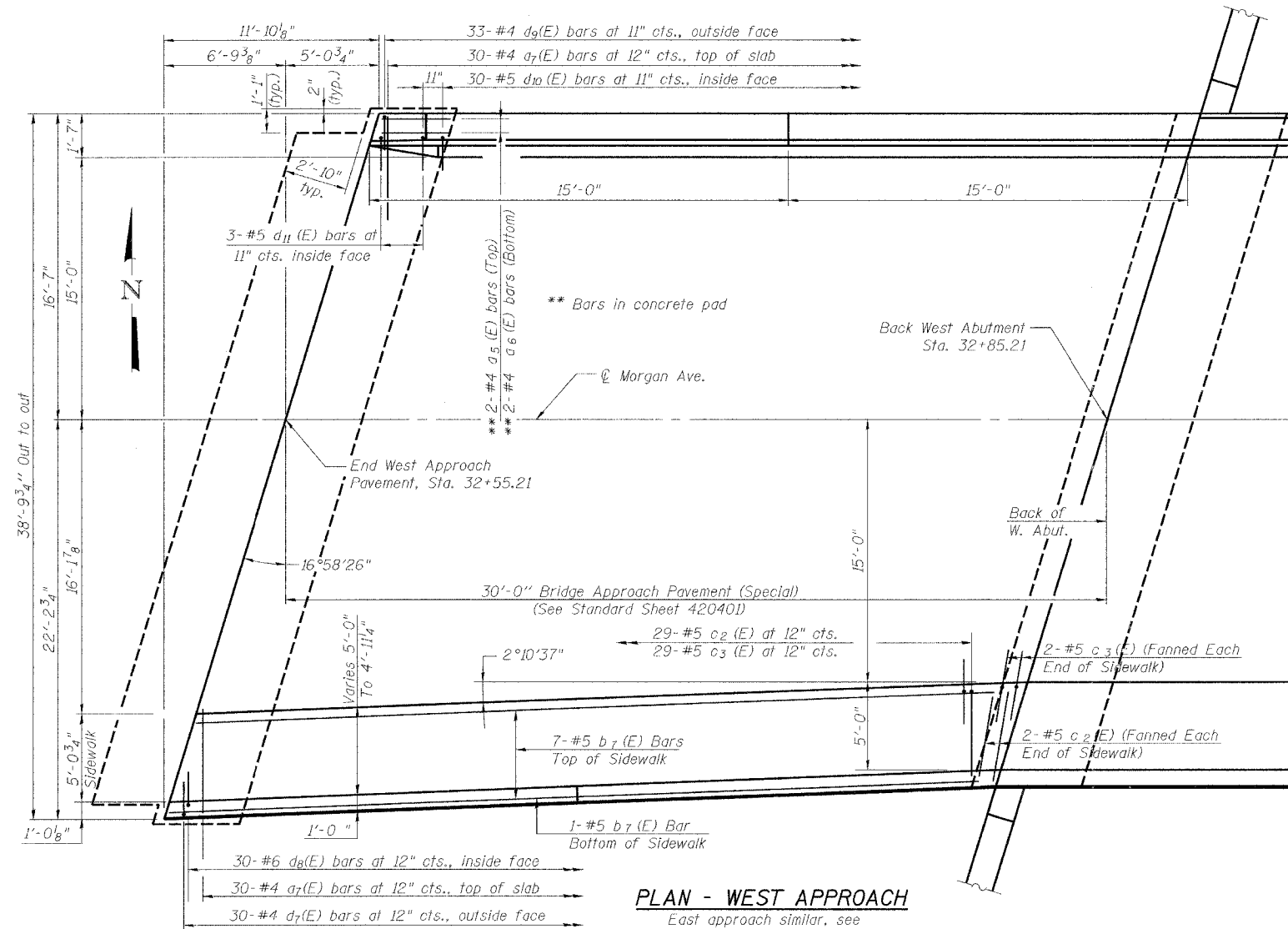
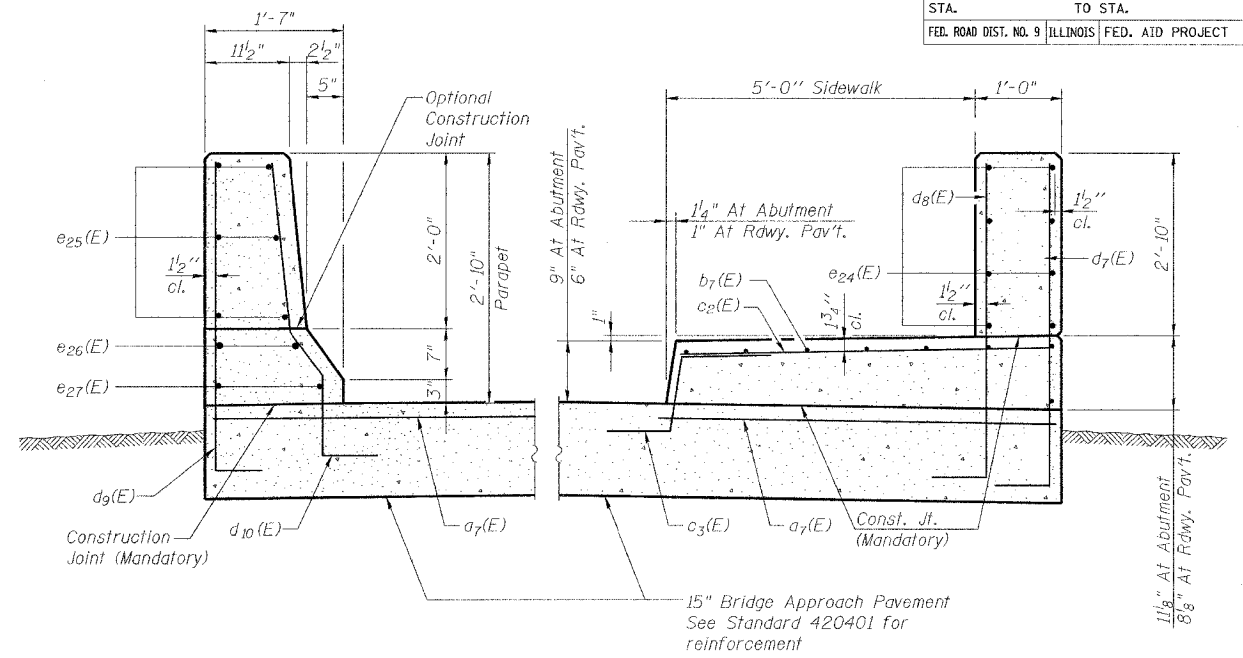
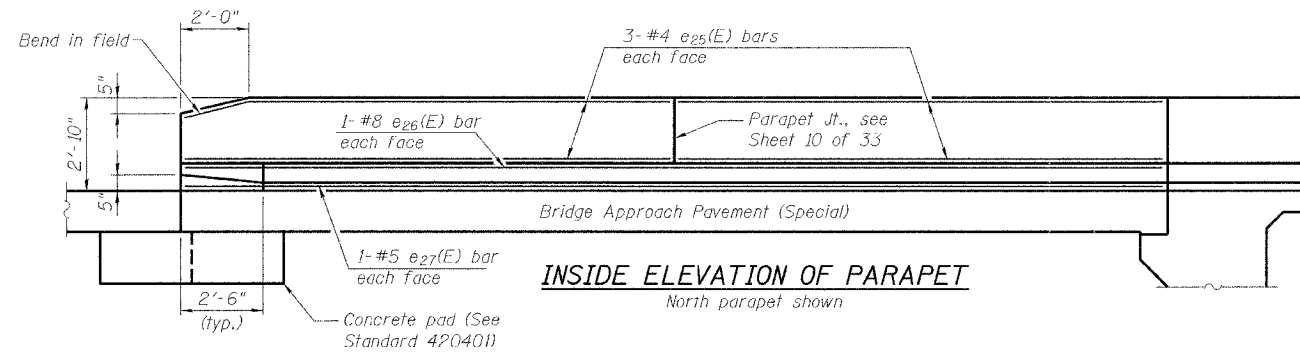


F.A.I. RTE.	SECTION	COUNTY	TOTAL SHEETS	SHEET NO.
57	(X1-6-2)HBK	WILLIAMSON	272	135
STA.	TO STA.			
FED. ROAD DIST. NO. 9	ILLINOIS	FED. AID PROJECT		

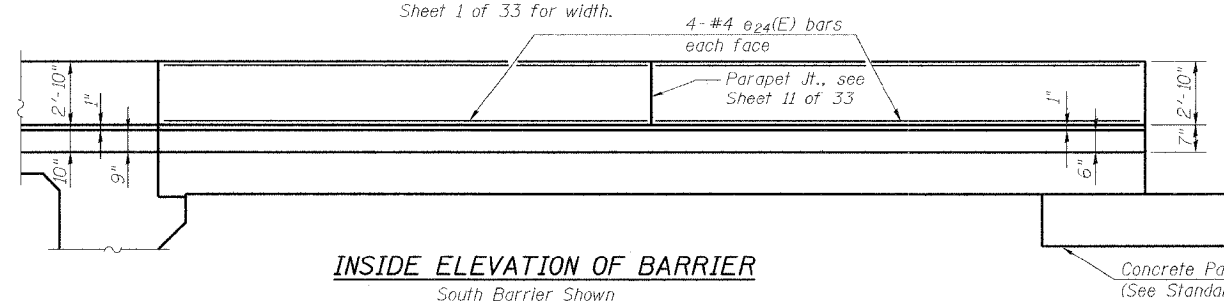


TWO APPROACH PAVEMENTS
BILL OF MATERIAL *

Bar	No.	Size	Length	Shape
a5(E)	8	#4	2'-11"	—
a6(E)	8	#4	3'-11"	—
a7(E)	120	#4	6'-0"	—
b7(E)	16	#5	29'-8"	—
c2(E)	66	#5	5'-9"	—
c3(E)	66	#5	2'-5"	—
d7(E)	60	#4	5'-3"	—
d8(E)	60	#6	5'-3"	—
d9(E)	66	#4	4'-4"	—
d10(E)	60	#5	4'-4"	—
d11(E)	6	#5	4'-1"	—
e24(E)	32	#4	14'-9"	—
e25(E)	24	#4	14'-9"	—
e26(E)	4	#8	29'-9"	—
e27(E)	4	#5	29'-9"	—
Reinforcement Bars, Epoxy Coated			Lbs.	3740

* Only materials in addition to those shown on Std. 420401

Notes:
Quantities are shown for information only. Cost is included with Bridge Approach Pavement (Special). See roadway plans.
For quantity of Bridge Approach Pavement (Special), see roadway plans.
Reinforcement bars designated (E) shall be epoxy coated.
For additional approach pavement details, see roadway plans and Standard 420401



REVISIONS		ILLINOIS DEPARTMENT OF TRANSPORTATION	
NAME	DATE	BRIDGE APPROACH PAVEMENT (SPECIAL)	
		MORGAN AVENUE INTERCHANGE FAI ROUTE 57 WITH FAU ROUTE 9718 WILLIAMSON COUNTY	
		SCALE: NONE	DRAWN BY: KBF
		DATE: 3-19-2007	CHECKED BY: ALN