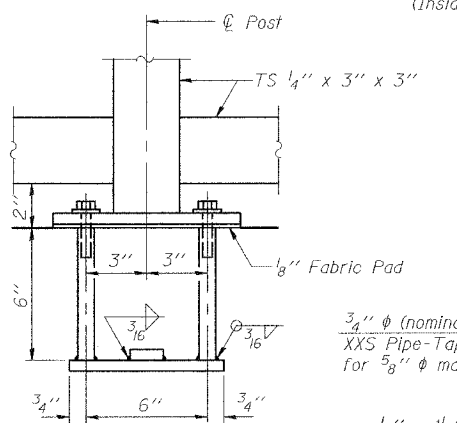
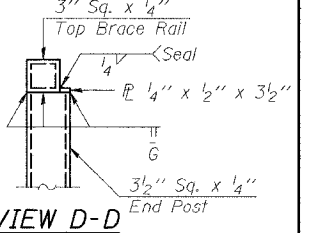
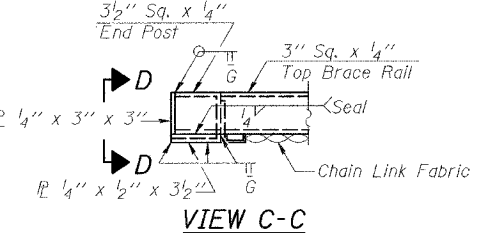
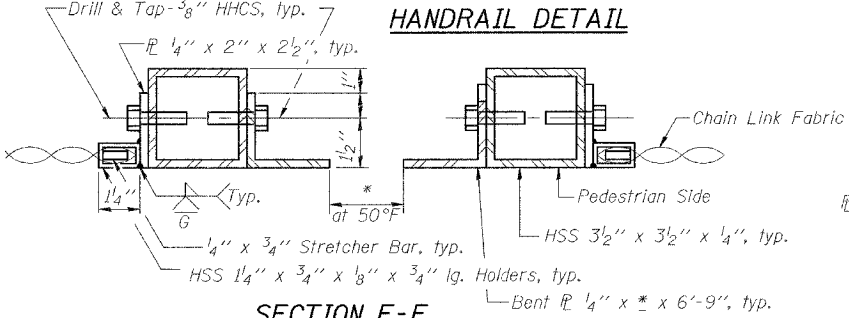
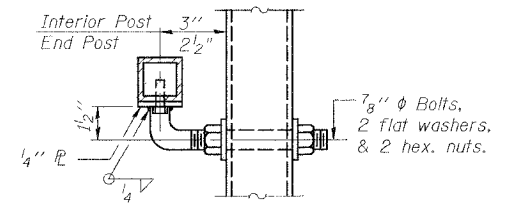
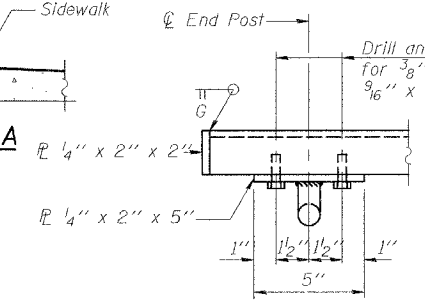
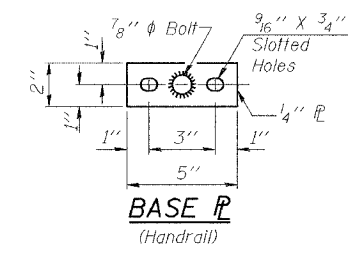
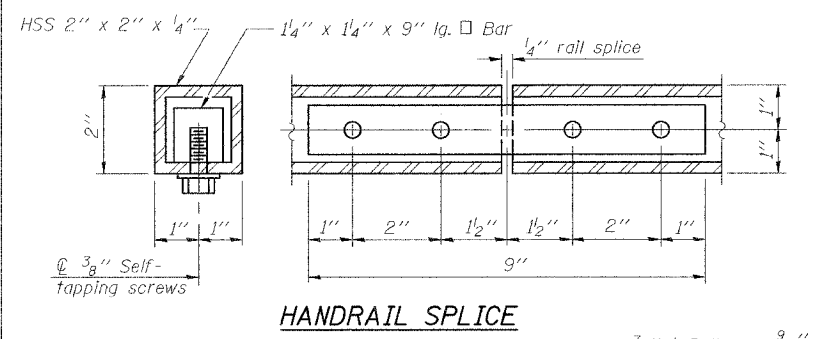
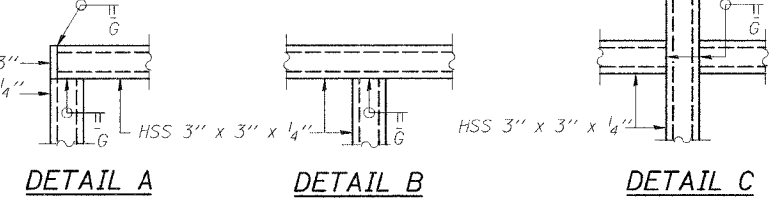
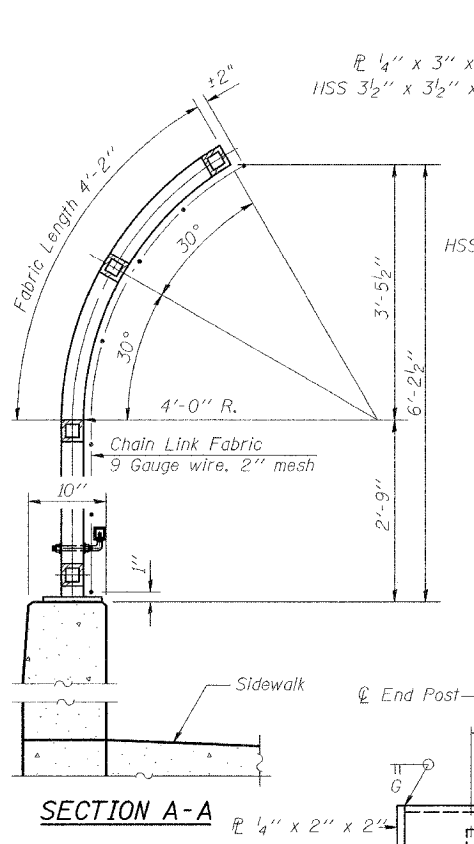
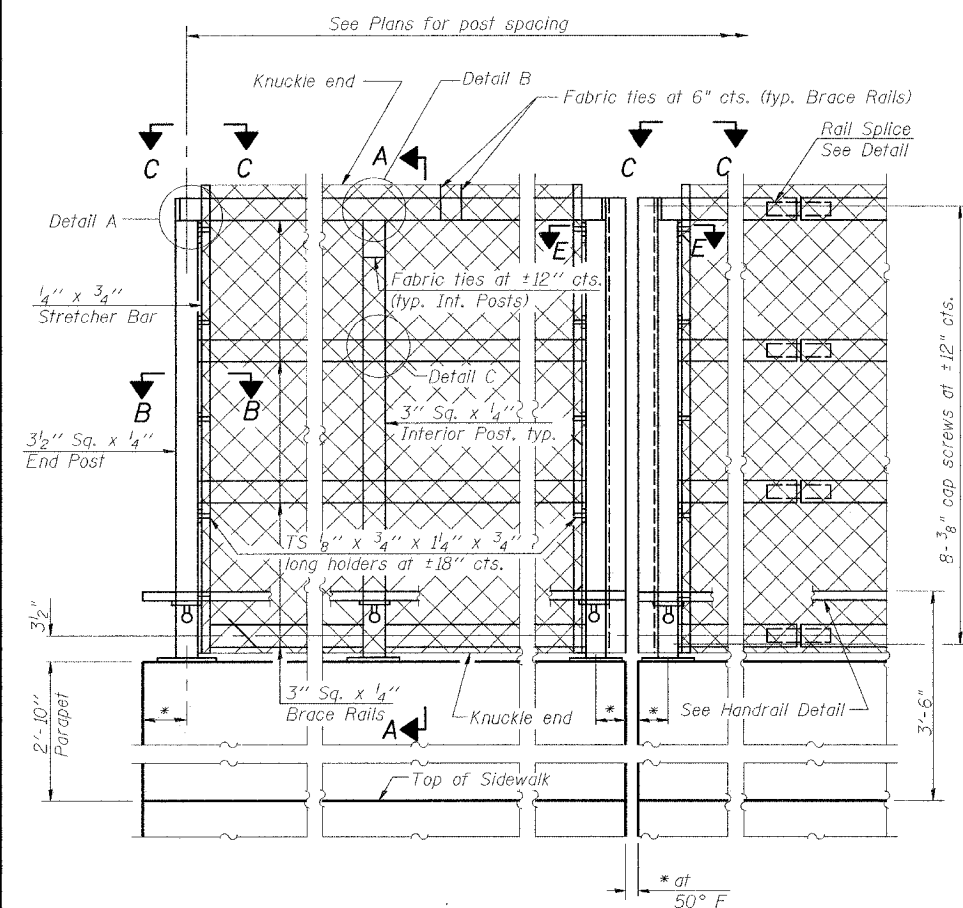


STATE OF ILLINOIS  
DEPARTMENT OF TRANSPORTATION

ROUTE NO.	SECTION	COUNTY	SHEET NO.	SHEET NO.
FAJ 57	(X1-6-2)HBK	Williamson	272	149
FED. ROAD DIST. NO. 7		ILLINOIS FED. AID PROJECT-		

Contract # 98994

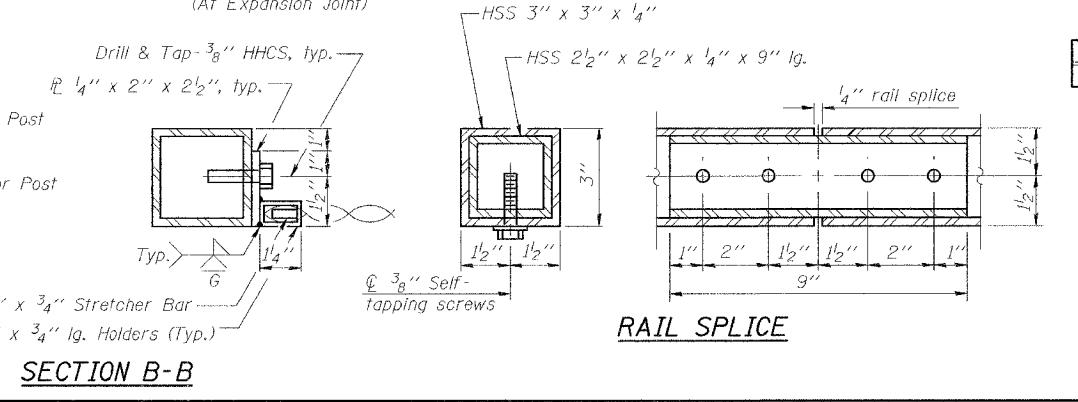
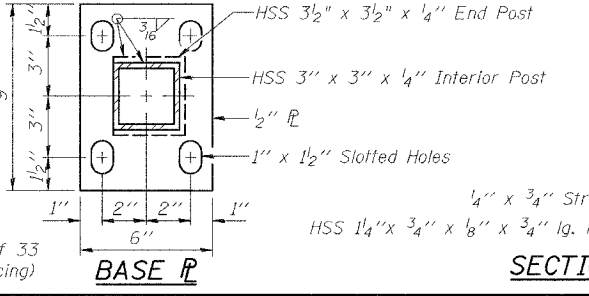


**ANCHOR BOLT DETAILS**

In lieu of the cast-in-place anchor device shown, the Contractor has the option of drilling and epoxy grouting 3/8" anchor rods. Embedment shall be according to the manufacturer's specifications.

THOUVENOT, WADE & MOERCHEN, INC.

<b>TWM</b>
DESIGNED ALN
CHECKED BWP
DRAWN KBF
CHECKED ALN/BWP



**BILL OF MATERIAL**

Item	Unit	Quantity
Bridge Fence Railing	Foot	369

BRIDGE FENCE RAILING (PARAPET MOUNTED)  
MORGAN AVE. OVER I-57  
FAI ROUTE 57 - SECTION (X1-76-2)HBK  
WILLIAMSON COUNTY  
STATION 34+69.21  
STRUCTURE NO. 100-0092

**NOTES**

Railing shall be according to Section 509 of the Standard Specifications, except as noted, and will be paid for at the Contract Unit Price per foot for Bridge Fence Railing.

The 9 gauge fabric ties shall be according to Article 1006.27(d) of the Standard Specifications.

Installation of the chain link fabric shall be according to Section 664 of the Standard Specifications.

Hollow structural sections shall conform to the requirements of ASTM designation A 500, Grade B, structural steel tubing.

All other steel shapes and plates shall conform to the requirements of AASHTO M 270 Grade 36.

The chain link fabric shall be placed along Pedestrian Side as shown on Section A-A.

Stretcher bars shall be used at each end of fabric.

A minimum of one complete turn is required at ends of all fabric ties.

If the option of drilling and epoxy grouting the anchor rods is chosen, the Contractor shall use the capsule or the adhesive cartridge type anchor rods that have been previously tested and given a prior approval by the Department. The Contractor shall install these anchor rods in pre-drilled holes according to the manufacturer's recommendations and procedures. The capsule or the adhesive cartridge shall be sealed with pre-measured amounts of the adhesive chemical.

Space reinforcement to miss anchor rods.

All posts, railing, splices, anchor devices, and plates shall be galvanized after shop fabrication according to AASHTO M 111 and ASTM A 385. All bolts, nuts, washers, and anchor rods shall be galvanized according to AASHTO M 232 except stainless steel bolts as noted.

Vent holes for galvanizing shall be placed in the posts and rails at locations that will not allow the accumulation of moisture in the members.

The chain link fabric shall conform to the requirements of Article 1006.27(a)(1)(a, b or c) of the Standard Specifications.