

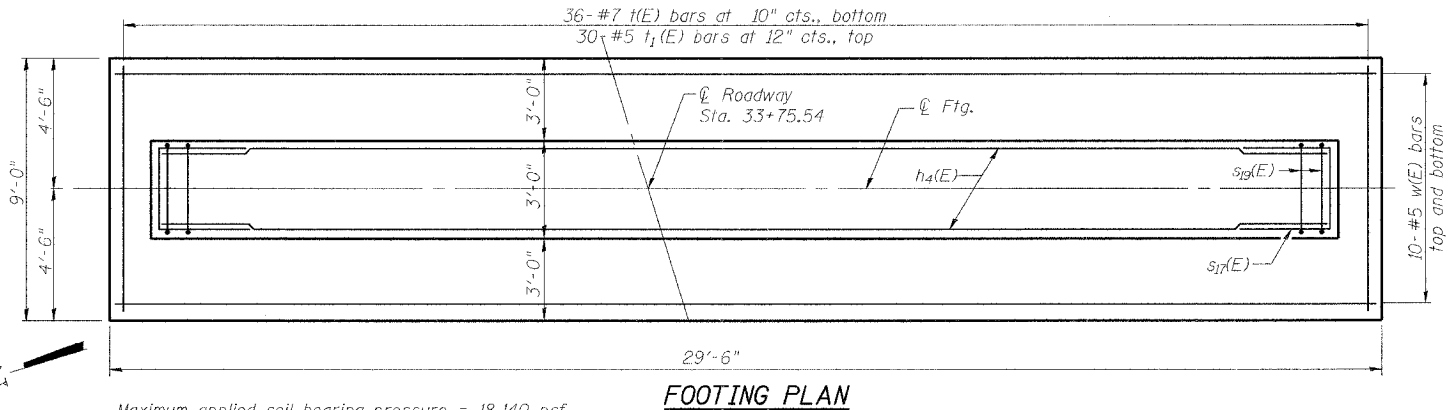
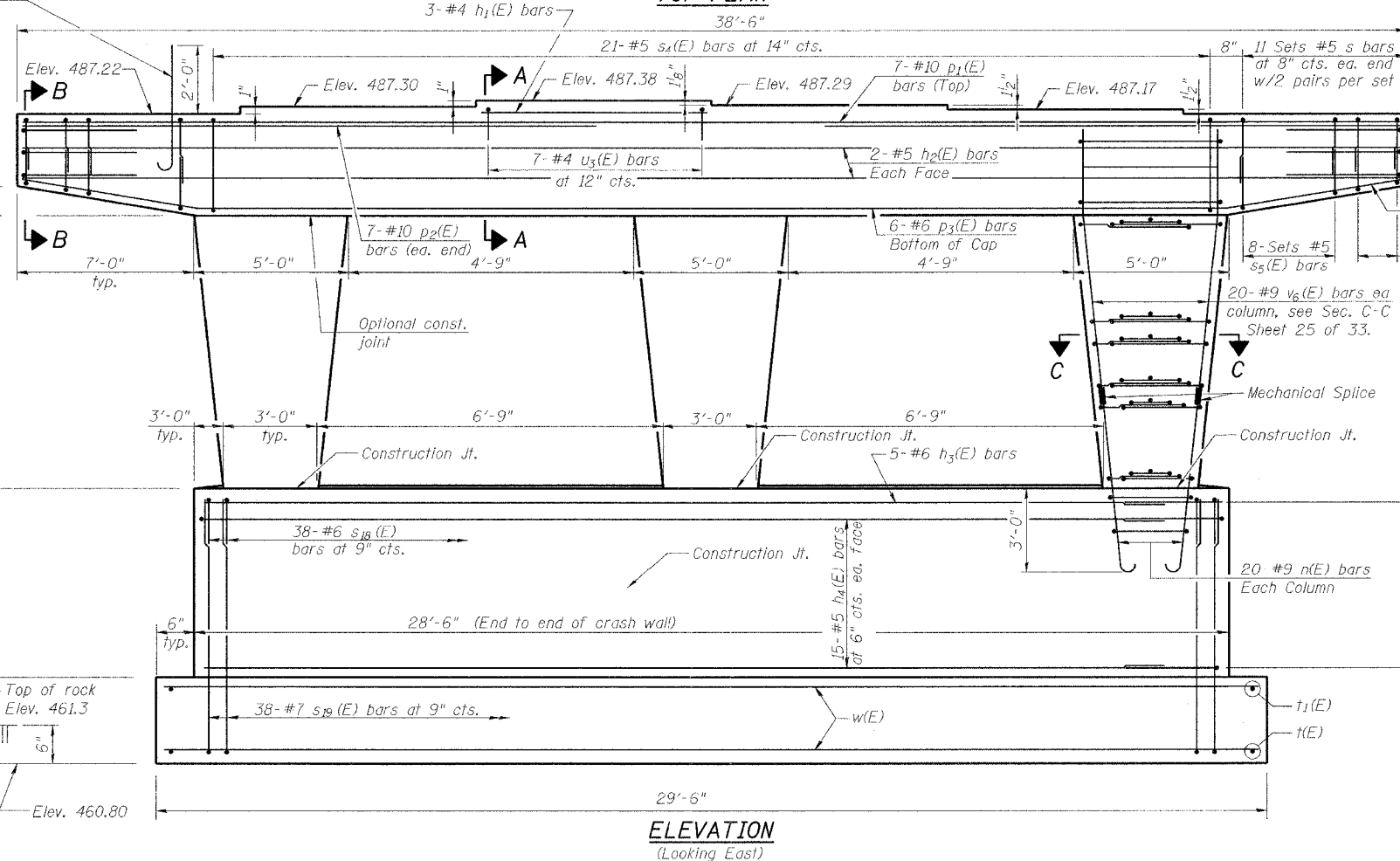
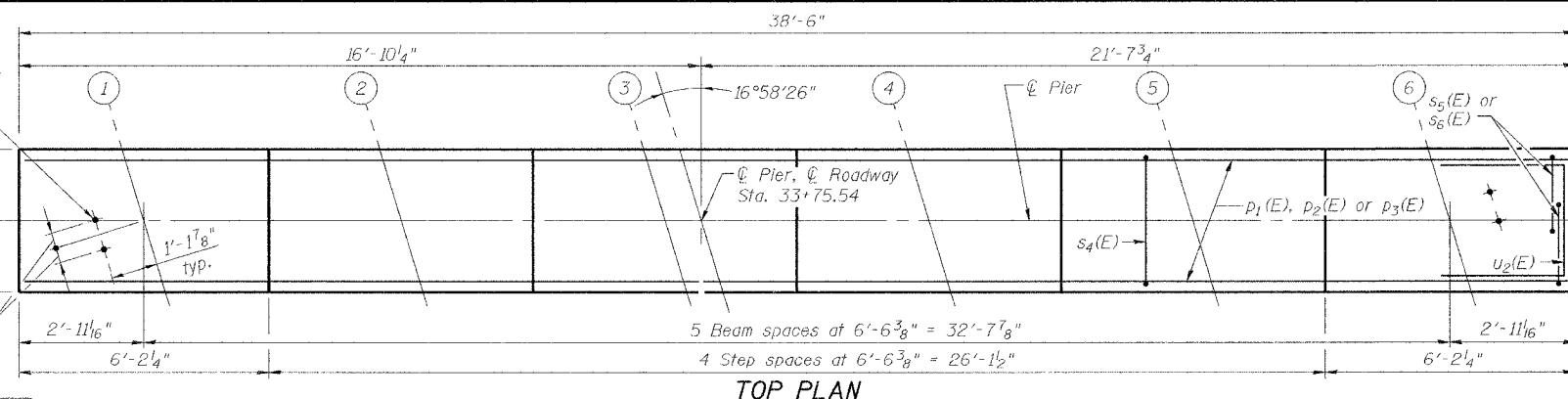
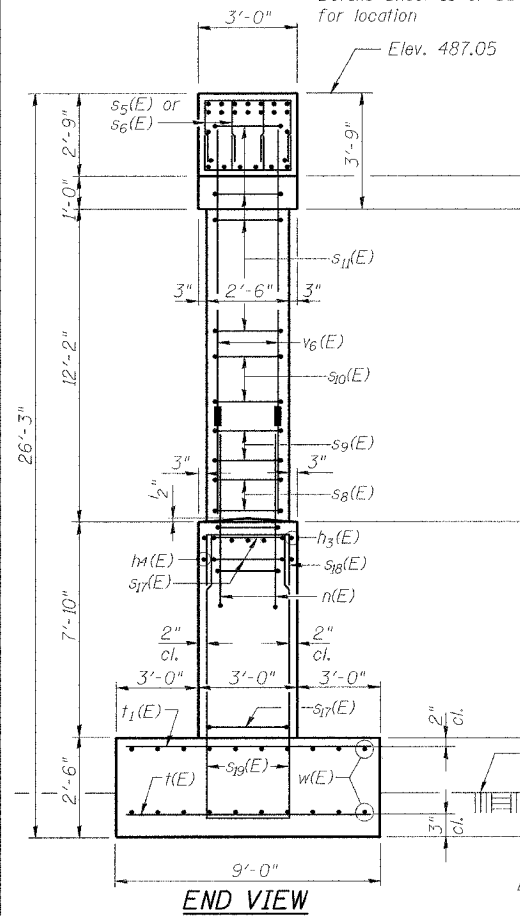
Note:
Space reinforcement in cap to miss anchor bolts.
Four steps monolithically with cap.

1 1/2" φ x 18" Anchor bolts with 3" x 3" x 5/16" washer under nut. Holes in cap to be drilled after beams are in place. (Typ. each end)

A & B DIMENSIONS

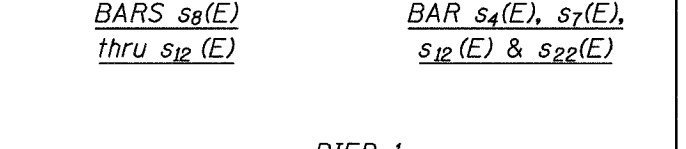
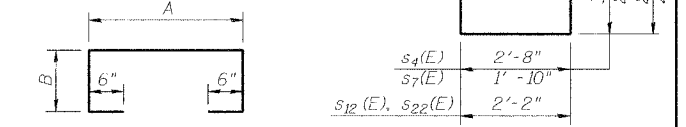
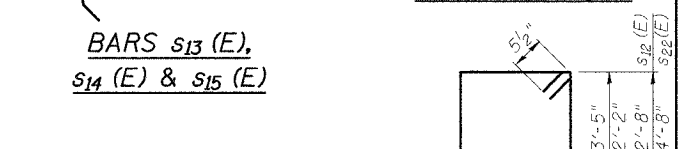
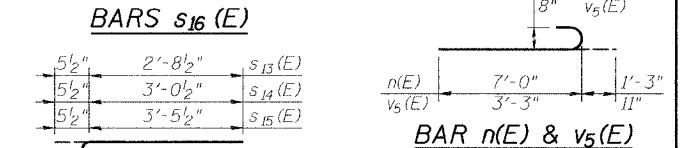
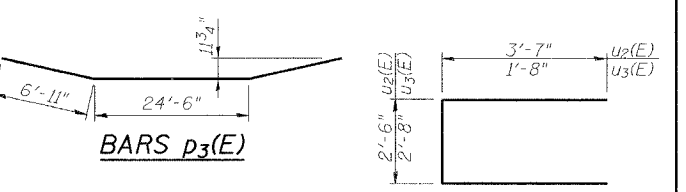
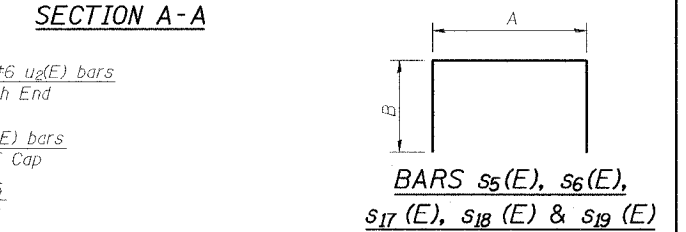
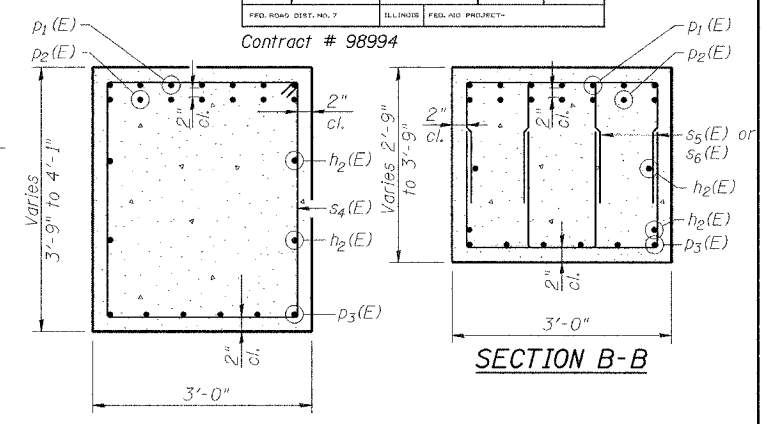
Bar	A	B
S ₅ (E)	1'-10"	2'-9 1/2"
S ₆ (E)	1'-10"	2'-5"
S ₈ (E)	2'-2"	2'-5"
S ₉ (E)	2'-2"	2'-8"
S ₁₀ (E)	2'-2"	2'-11"
S ₁₁ (E)	2'-2"	3'-5"
S ₁₂ (E)	2'-2"	2'-4"
S ₁₇ (E)	2'-6"	3'-0"
S ₁₈ (E)	2'-8"	2'-7"
S ₁₉ (E)	2'-8"	9'-11"

30- #8 v₅(E) dowel bars See Diaphragm Details Sheet 13 of 33 for location



Maximum applied soil bearing pressure = 18,140 psf

ROUTE NO.	SECTION	COUNTY	SHEET NO.	SHEET NO. 24
FAI 57	(X1-6-2)HBK	Williamson	272	159
Contract # 98994				33 SHEETS



THOUVENOT, WADE & MOERCHEN, INC.



DESIGNED	BWP
CHECKED	ALN
DRAWN	KDF
CHECKED	ALN/BWP

MIN. BAR LAPS

#5	- 2'-2"
#6	- 2'-7"
#7	- 3'-5"

PIER 1
MORGAN AVE. OVER I-57
FAI ROUTE 57 - SECTION (X1-6-2)HBK
WILLIAMSON COUNTY
STATION 34+69.21
STRUCTURE NO. 100-0092