

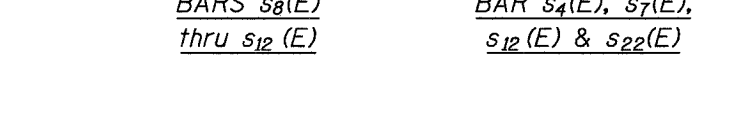
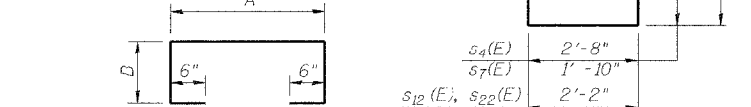
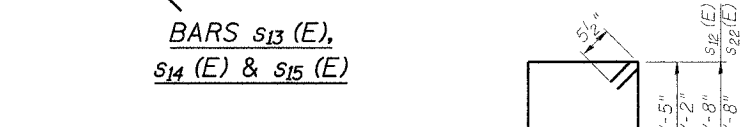
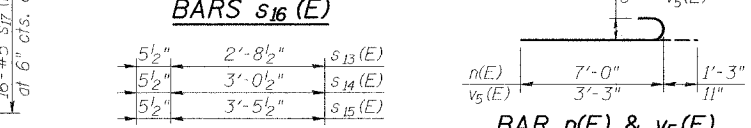
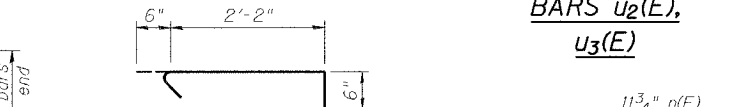
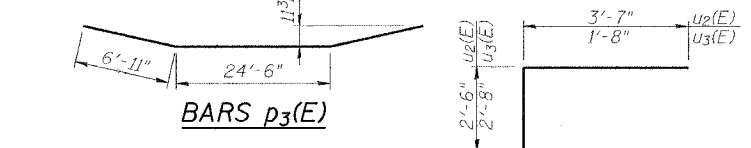
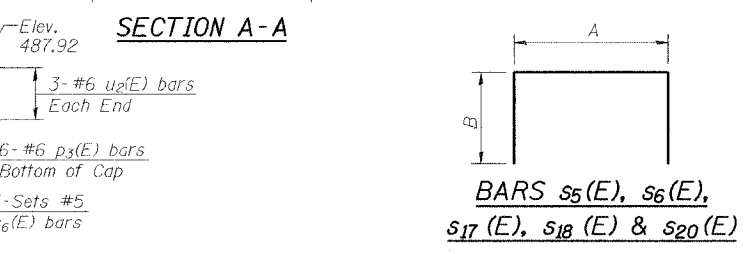
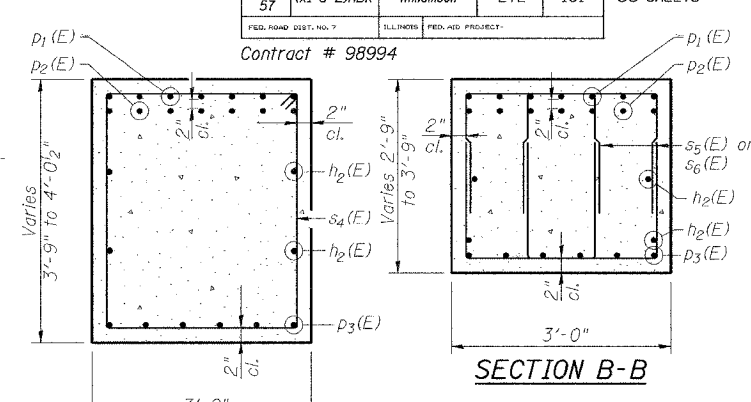
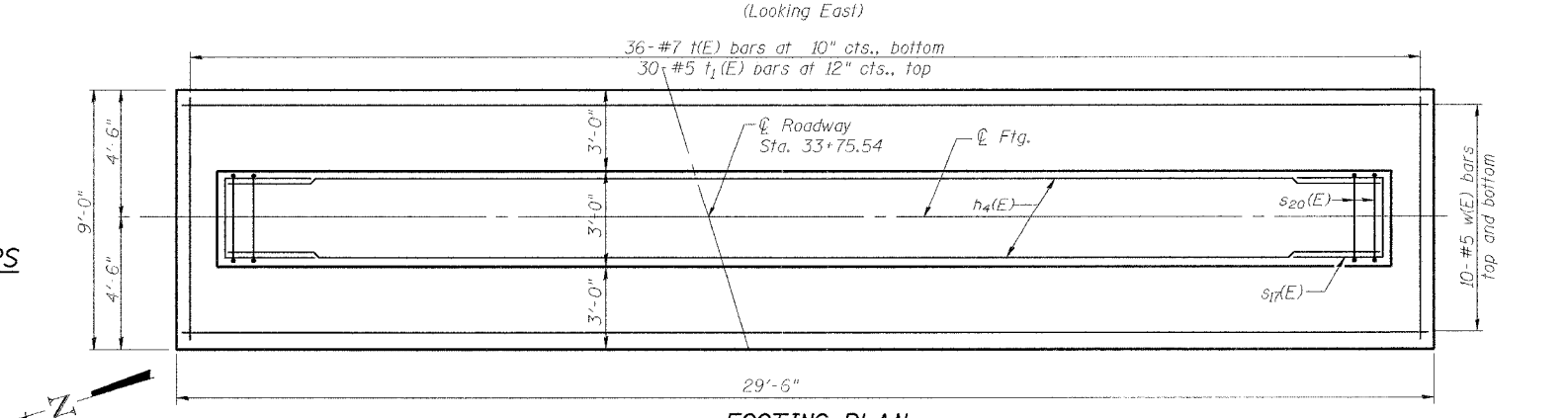
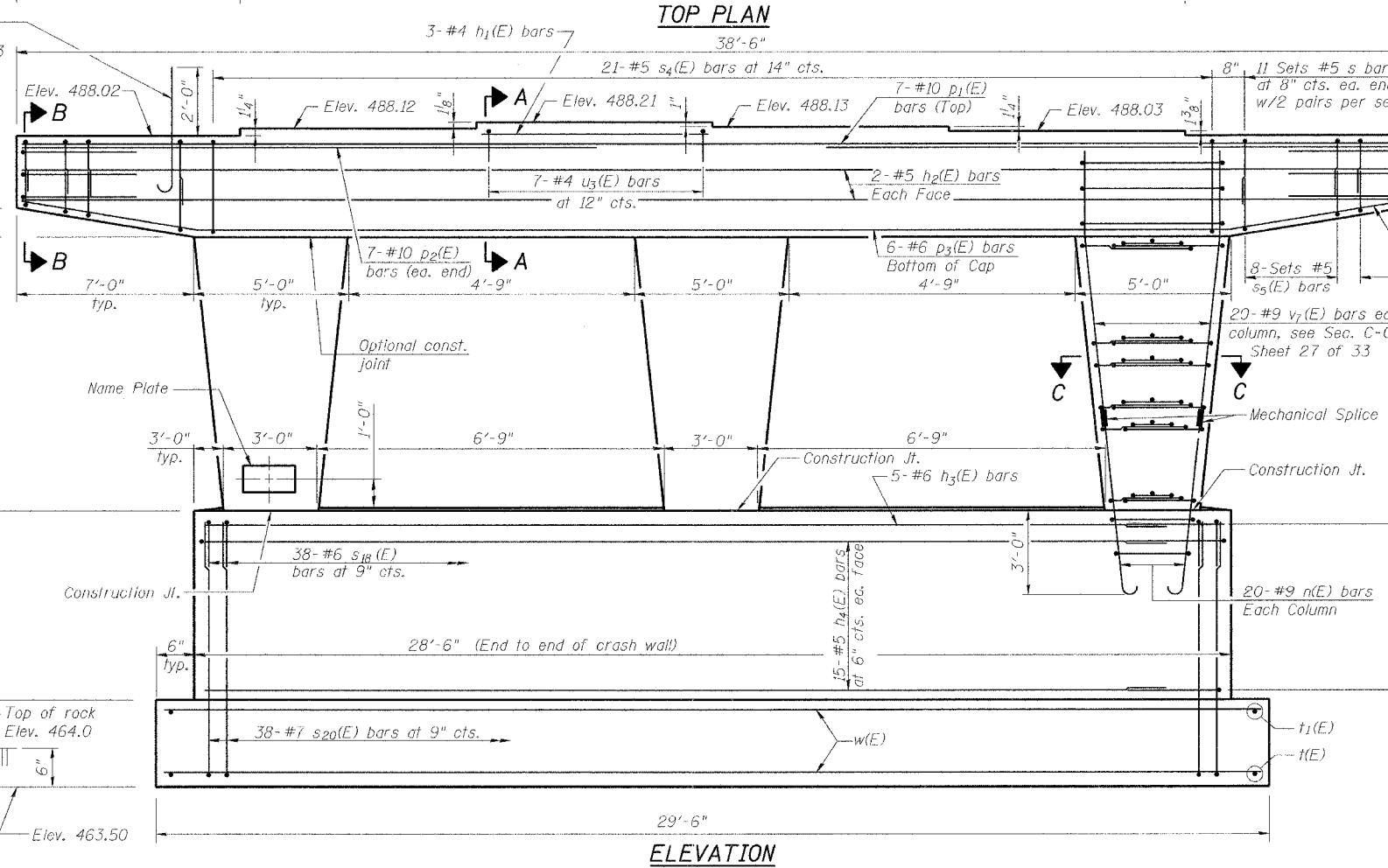
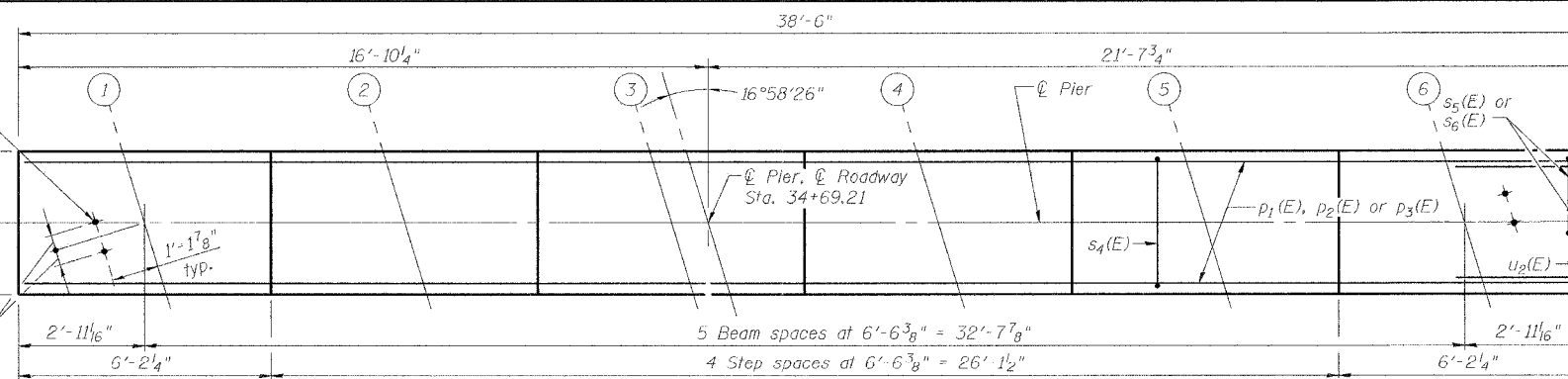
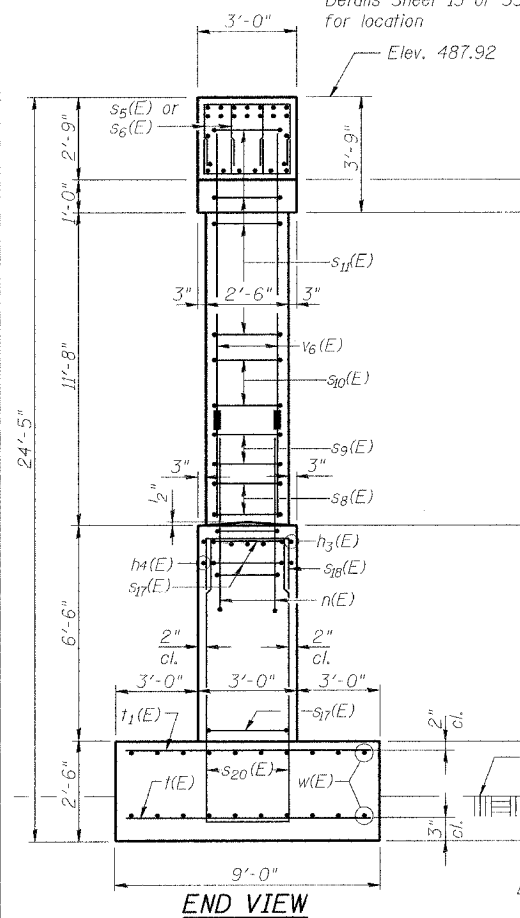
Note:
Space reinforcement in cap to miss anchor bolts.
Pour steps monolithically with cap.

A & B DIMENSIONS

Bar	A	B
S ₅ (E)	1'-10"	2'-9 1/2"
S ₆ (E)	1'-10"	2'-5"
S ₈ (E)	2'-2"	2'-5"
S ₉ (E)	2'-2"	2'-8"
S ₁₀ (E)	2'-2"	2'-11"
S ₁₁ (E)	2'-2"	3'-5"
S ₁₂ (E)	2'-2"	2'-4"
S ₁₇ (E)	2'-6"	3'-0"
S ₁₈ (E)	2'-8"	2'-7"
S ₂₀ (E)	2'-8"	8'-7"

1/2" φ x 18" Anchor bolts with 3" x 3" x 5/16" R washer under nut. Holes in cap to be drilled after beams are in place. (Typ. each end)

30- #8 v₅(E) dowel bars See Diaphragm Details Sheet 13 of 33 for location



THOUVENOT, WADE & MOERCHEN, INC.

DESIGNED BWP	#5 - 2'-2"
CHECKED ALN	#6 - 2'-7"
DRAWN KBF	#7 - 3'-5"
CHECKED BWP/ALN	

MIN. BAR LAPS

PIER 2
MORGAN AVE. OVER I-57
FAI ROUTE 57 - SECTION (X1-6-2)HBK
WILLIAMSON COUNTY
STATION 34+69.21
STRUCTURE NO. 100-0092

Maximum applied soil bearing pressure = 18,140 psf