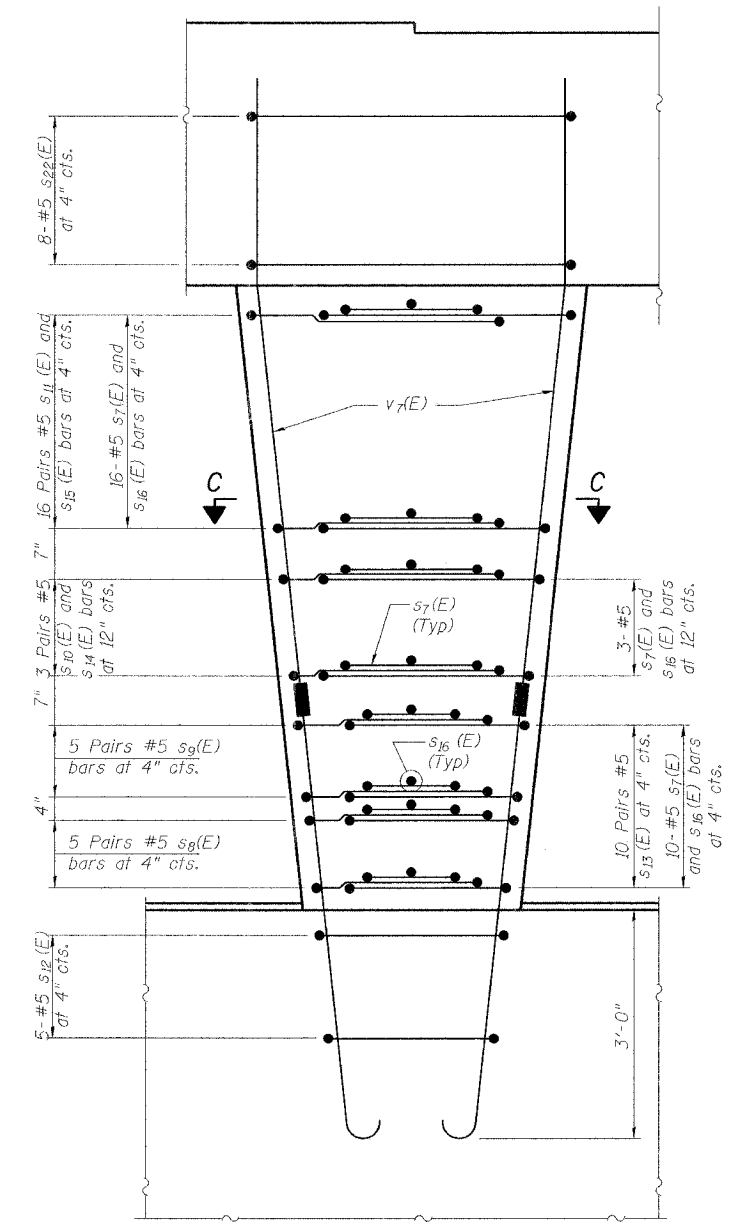


**SECTION C-C**  
 \* Alternate 90° hook of s<sub>16</sub>(E) bar. Place 90° hook in opposite face every other bar.



**COLUMN REINFORCING**

**MIN. BAR LAPS**  
 #5 - 2'-2"  
 #6 - 2'-7"  
 #7 - 3'-5"

**BILL OF MATERIAL**

Bar	No.	Size	Length	Shape
h <sub>1</sub> (E)	3	#5	6'-2"	—
h <sub>2</sub> (E)	4	#5	38'-2"	—
h <sub>3</sub> (E)	5	#6	28'-2"	—
h <sub>4</sub> (E)	30	#5	28'-2"	—
n(E)	60	#9	8'-3"	U
p <sub>1</sub> (E)	7	#10	38'-2"	—
p <sub>2</sub> (E)	14	#10	15'-10"	—
p <sub>3</sub> (E)	6	#6	38'-4"	—
s <sub>4</sub> (E)	21	#5	13'-1"	□
s <sub>5</sub> (E)	32	#5	7'-5"	□
s <sub>6</sub> (E)	12	#5	6'-8"	□
s <sub>7</sub> (E)	87	#5	8'-11"	□
s <sub>8</sub> (E)	30	#5	8'-0"	□
s <sub>9</sub> (E)	30	#5	8'-6"	□
s <sub>10</sub> (E)	18	#5	9'-0"	□
s <sub>11</sub> (E)	96	#5	10'-0"	□
s <sub>12</sub> (E)	15	#5	10'-7"	□
s <sub>13</sub> (E)	60	#5	3'-2"	└
s <sub>14</sub> (E)	18	#5	3'-6"	└
s <sub>15</sub> (E)	96	#5	3'-11"	└
s <sub>16</sub> (E)	87	#5	3'-2"	└
s <sub>17</sub> (E)	32	#5	8'-6"	□
s <sub>18</sub> (E)	38	#6	7'-10"	□
s <sub>20</sub> (E)	38	#7	19'-10"	□
s <sub>22</sub> (E)	24	#5	14'-7"	□
t(E)	36	#7	8'-8"	—
t <sub>1</sub> (E)	30	#5	8'-8"	—
u <sub>2</sub> (E)	6	#6	9'-8"	└
u <sub>3</sub> (E)	7	#4	6'-0"	└
v <sub>5</sub> (E)	30	#8	4'-2"	U
v <sub>7</sub> (E)	60	#9	10'-8"	—
w(E)	20	#5	29'-2"	—
Structure Excavation		Cu. Yd.		66.1
Rock Excavation for Structures		Cu. Yd.		4.9
Concrete Structures		Cu. Yd.		74.1
Reinforcement Bars, Epoxy Coated		Pound		16,400
Mechanical Splice		Each		60

Reinforcement Bars designated (E) shall be epoxy coated.

THOUVENOT, WADE & MOERCHEN, INC.



DESIGNED	BWP
CHECKED	ALN
DRAWN	KBF
CHECKED	BWP/ALN

PIER 2 DETAILS  
 MORGAN AVE. OVER I-57  
 FAI ROUTE 57 - SECTION (X1-6-2)HBK  
 WILLIAMSON COUNTY  
 STATION 34+69.21  
 STRUCTURE NO. 100-0092