

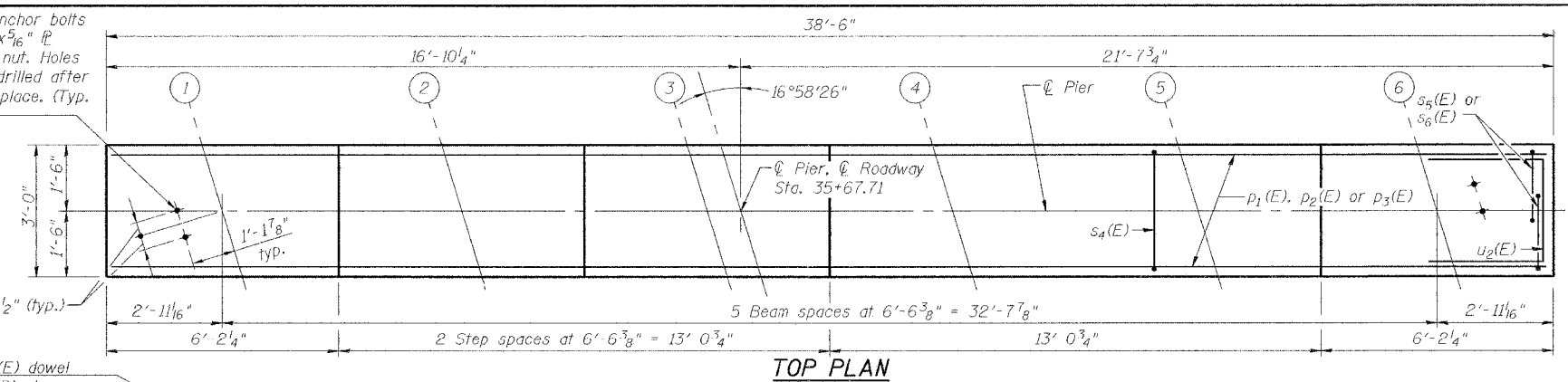
Note:
 Space reinforcement in cap to miss anchor bolts.
 Four steps monolithically with cap.

A & B DIMENSIONS

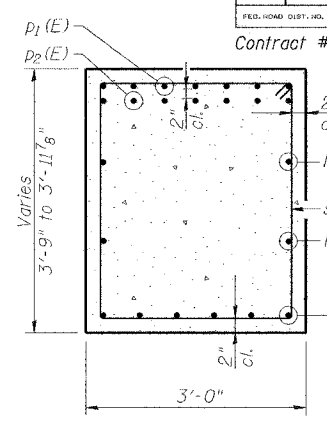
Bar	A	B
S ₅ (E)	1'-10"	2'-9 1/2"
S ₆ (E)	1'-10"	2'-5"
S ₈ (E)	2'-2"	2'-5"
S ₉ (E)	2'-2"	2'-8"
S ₁₀ (E)	2'-2"	2'-11"
S ₁₁ (E)	2'-2"	3'-5"
S ₁₂ (E)	2'-2"	2'-4"
S ₁₇ (E)	2'-6"	3'-0"
S ₁₈ (E)	2'-8"	2'-7"
S ₂₁ (E)	2'-8"	9'-2"

1/2" φ x 18" Anchor bolts with 3" x 3" x 5/16" fl washer under nut. Holes in cap to be drilled after beams are in place. (Typ. each end)

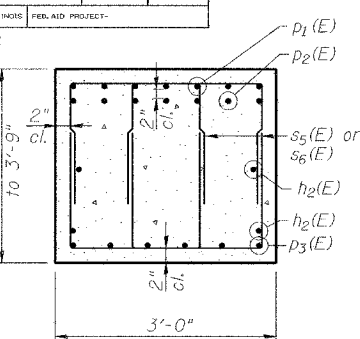
30-#8 v₅(E) dowel bars See Diaphragm Details Sheet 13 of 33 for location



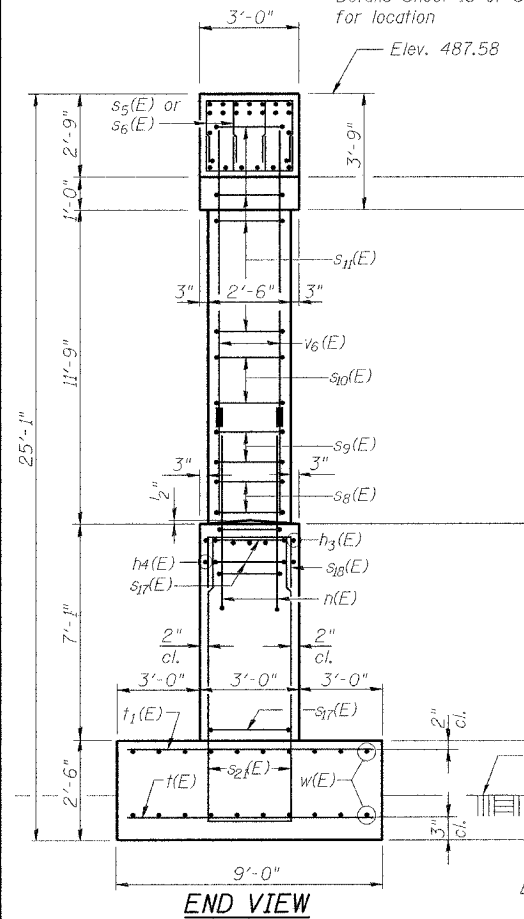
TOP PLAN



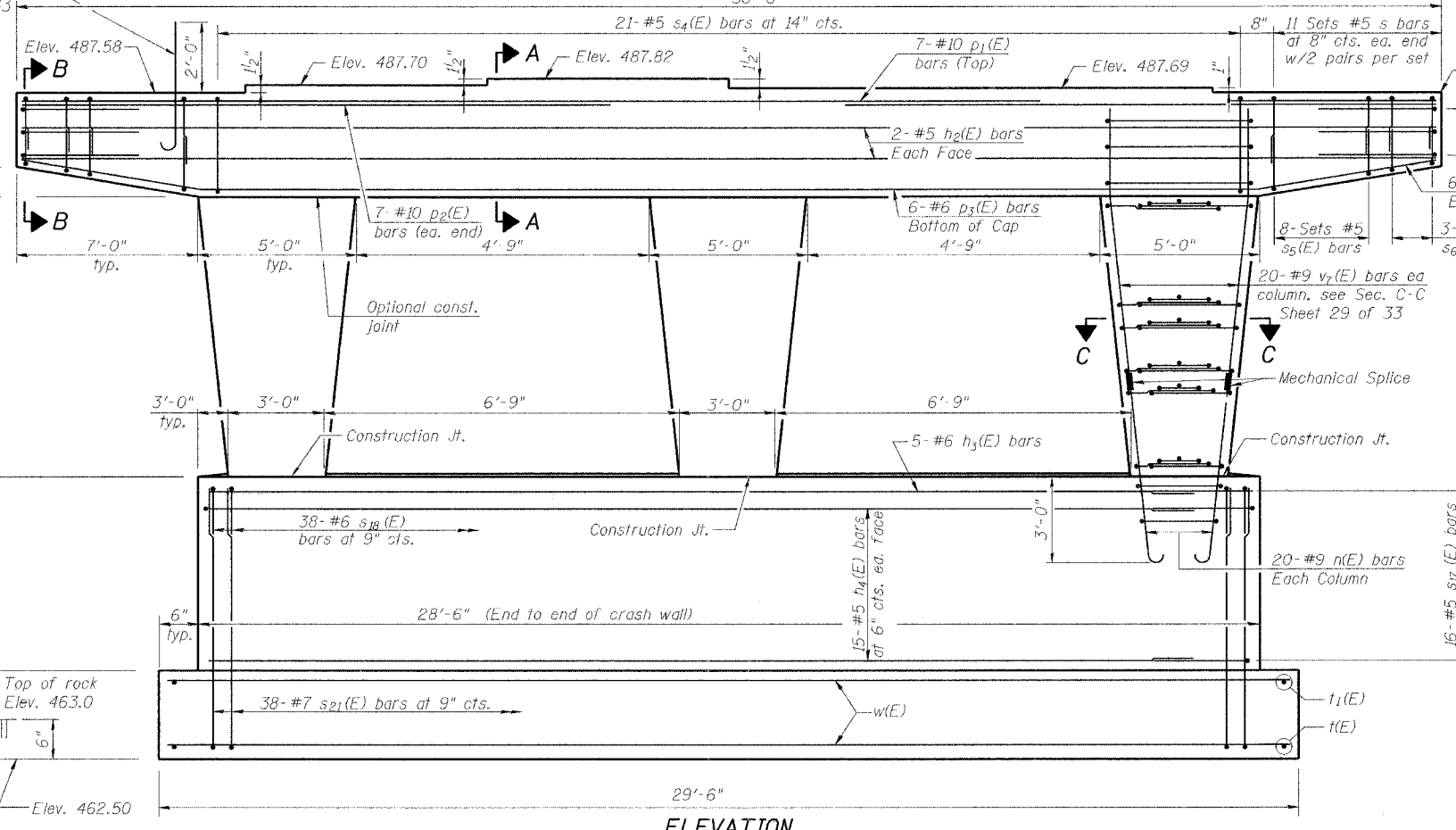
SECTION A-A



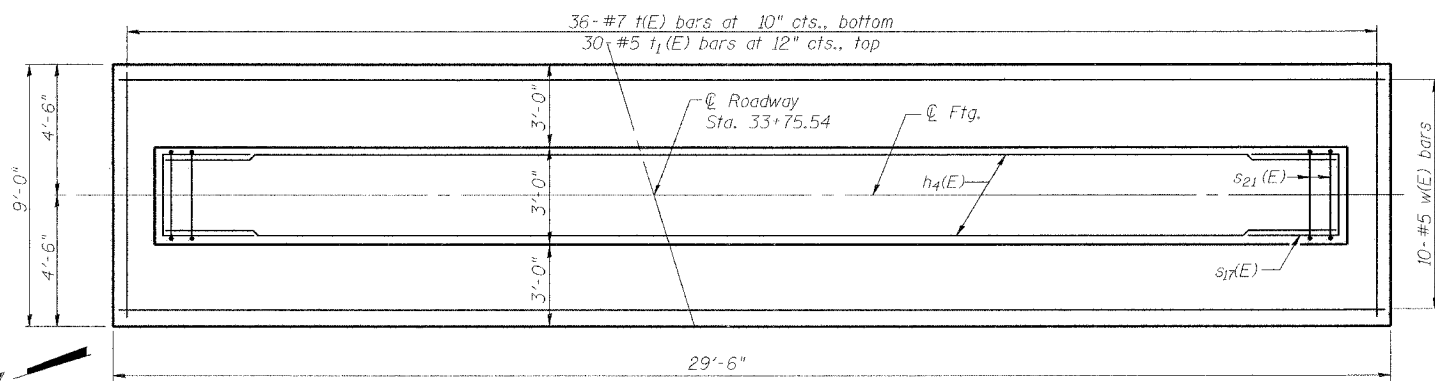
SECTION B-B



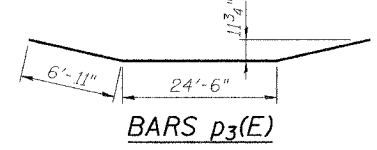
END VIEW



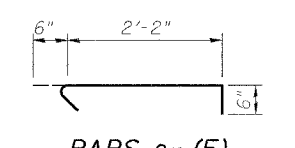
ELEVATION
(Looking East)



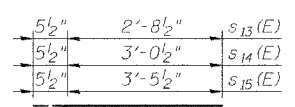
FOOTING PLAN



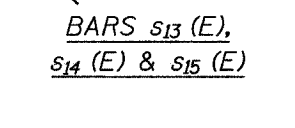
BARS p₃(E)



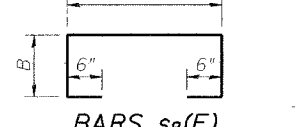
BARS u₂(E), u₃(E)



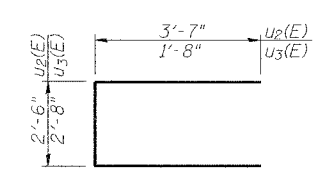
BARS s₁₆(E)



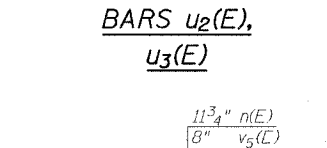
BARS s₁₃(E), s₁₄(E) & s₁₅(E)



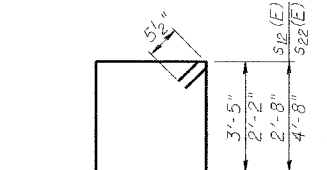
BARS s₈(E) thru s₁₂(E)



BARS s₅(E), s₆(E), s₁₇(E), s₁₈(E) & s₂₁(E)



BAR n(E) & v₅(E)



BAR s₄(E), s₇(E), s₁₂(E) & s₂₂(E)

ROUTE NO.	SECTION	COUNTY	SHEET NO.	SHEET NO.	SHEET NO.
FAI 57	X1-6-2)HBK	Williamson	272	163	33 SHEETS

Contract # 98994

PIER 3
 MORGAN AVE. OVER I-57
 FAI ROUTE 57 - SECTION (X1-6-2)HBK
 WILLIAMSON COUNTY
 STATION 34+69.21
 STRUCTURE NO. 100-0092

THOUVENOT, WADE & MOERCHEN, INC.



DESIGNED	BWP
CHECKED	ALN
DRAWN	KBF
CHECKED	BWP/ALN

MIN. BAR LAPS

#5	- 2'-2"
#6	- 2'-7"
#7	- 3'-5"

Maximum applied soil bearing pressure = 18,140 psf