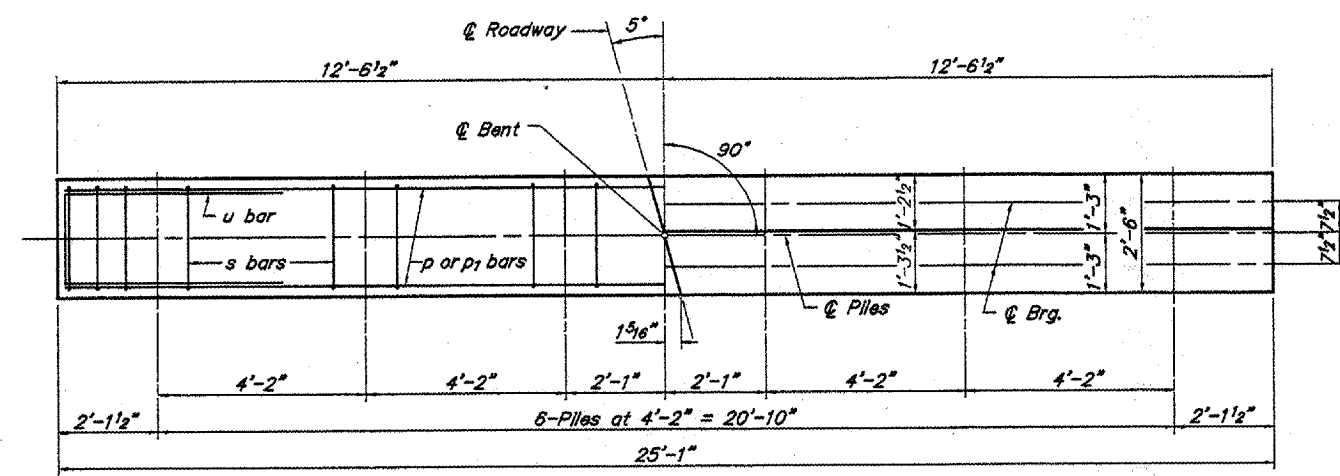
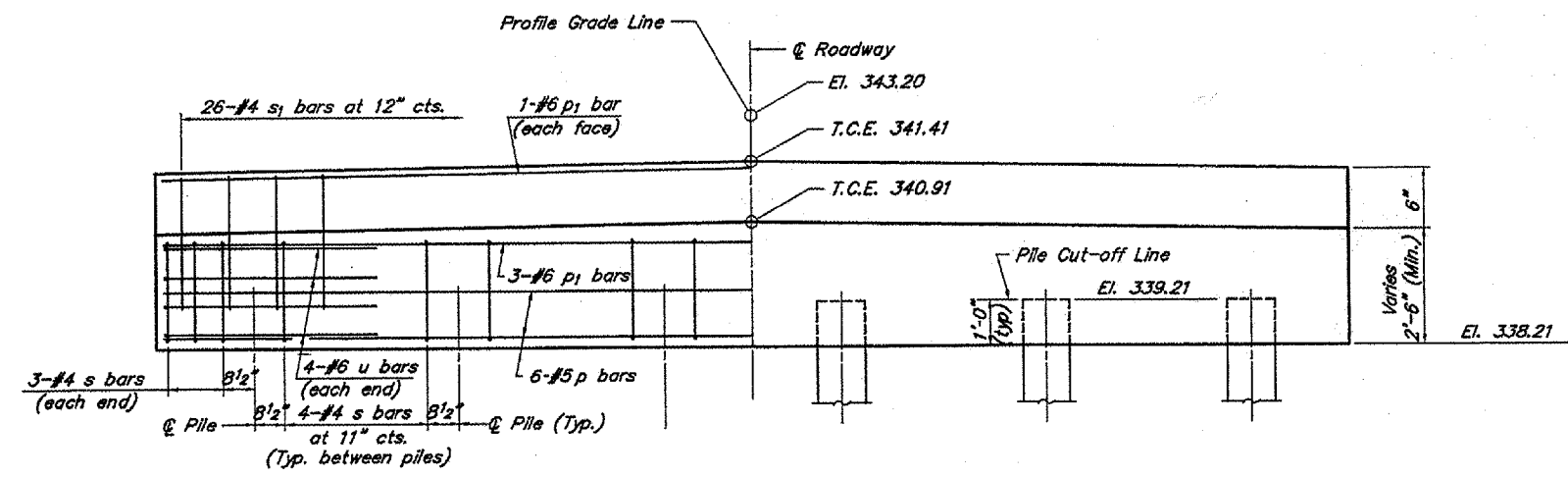


ROUTE	SECTION	COUNTY	TOTAL SHEETS	SHEET NO.
TR 137	99-01146-00-BR	POPE	11	7
PROJECT NO. BROS-151(61)			CONTRACT NO. 99210	



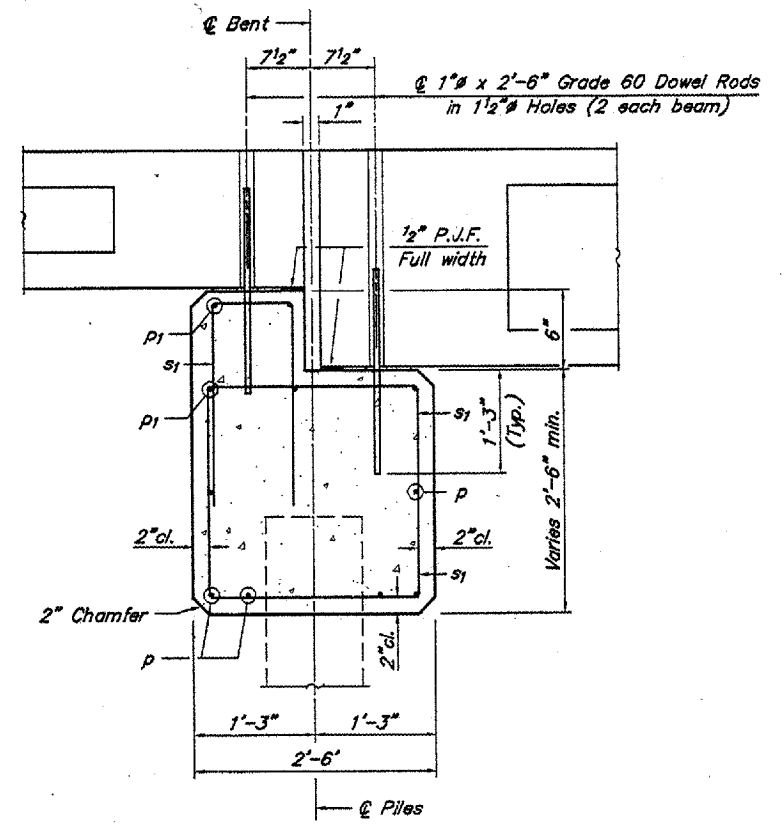
PLAN



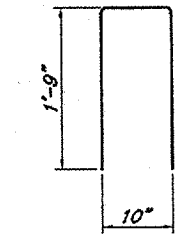
ELEVATION

- NOTES**
1. Reinforcement bars shall conform to A.A.S.H.T.O. M-31, M-42 or M-53, Grade 60.
 2. Nominal 1 3/4" joint at @ Pier shall be filled with non-shrink grout to top.

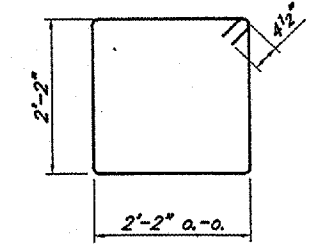
DESIGN STRESSES
 $f_c = 3,500 \text{ psi}$
 $f_y = 60,000 \text{ psi}$



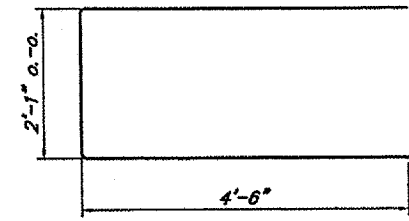
SECTION THRU ABUT.
(At Right Angles)



Bar s2



Bar s1



Bar u1

BILL OF MATERIALS FOR ONE PIER

Bar	No.	Size	Length	Shape
p	6	#5	24'-9"	—
p1	5	#6	24'-9"	—
s	26	#4	9'-5"	□
s1	26	#4	4'-4"	⊥
u	8	#6	11'-1"	—
Concrete Structures			6.6	Cu. Yds.
Reinforcement Bars			713	Lbs.

PIERS
BAY CREEK
SECTION 99-01146-00-BR
POPE COUNTY