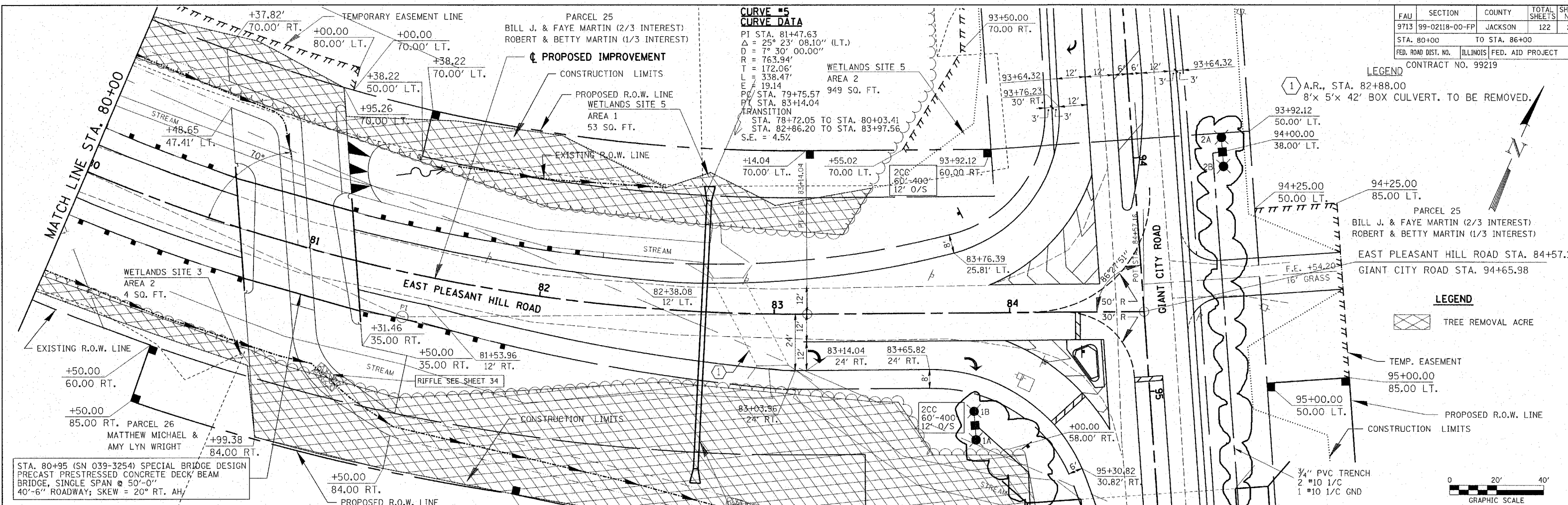


FAU	SECTION	COUNTY	TOTAL SHEETS	SHEET NO.
9713	99-02118-00-FP	JACKSON	122	28
STA. 80+00		TO STA. 86+00		
FED. ROAD DIST. NO.		ILLINOIS FED. AID PROJECT		
CONTRACT NO. 99219				

**CURVE #5
CURVE DATA**

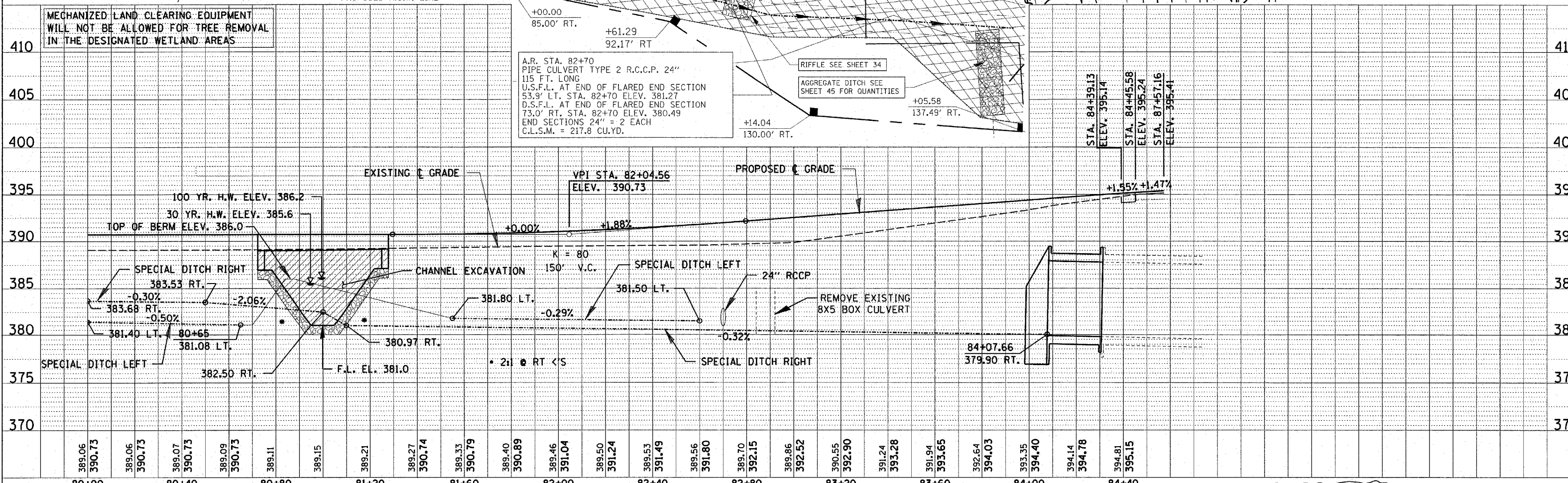
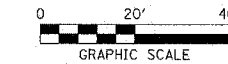
PI STA. 81+47.63
 $\Delta = 25^\circ 23' 08.10''$ (LT.)
 $D = 7^\circ 30' 00.00''$
 $R = 763.94'$
 $T = 172.06'$
 $L = 338.47'$
 $E = 19.14'$
 PC STA. 79+75.57
 PT STA. 83+14.04
 TRANSITION
 STA. 78+72.05 TO STA. 80+03.41
 STA. 82+86.20 TO STA. 83+97.56
 S.E. = 4.5%



1 A.R., STA. 82+88.00
 8'x 5'x 42' BOX CULVERT. TO BE REMOVED.

94+25.00 50.00 LT.
 94+00.00 38.00 LT.
 94+25.00 85.00 LT.
 EAST PLEASANT HILL ROAD STA. 84+57.16
 GIANT CITY ROAD STA. 94+65.98
 F.E. +54.20
 16" GRASS

LEGEND
 TREE REMOVAL ACRE
 TEMP. EASEMENT
 95+00.00 85.00 LT.
 PROPOSED R.O.W. LINE
 CONSTRUCTION LIMITS
 95+00.00 50.00 LT.
 3/4" PVC TRENCH
 2 #10 1/C
 1 #10 1/C GND



Revised 5/29/07