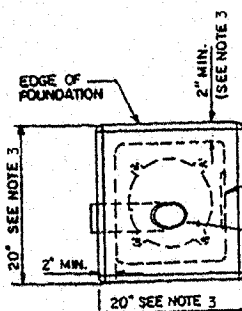


TYP BREAKAWAY COUPLING

LOW MOUNT DESIGN TABLE

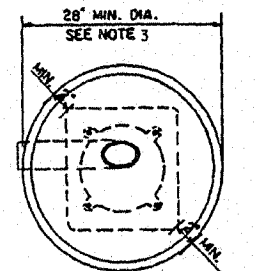
MOUNTING FOUNDATION HEIGHT	DEPTH	BOLT CIRCLE
3' OR LESS	5'-0"	11 1/2"
3' - 33"	6'-0"	11 1/2"
36" - 40"	7'-0"	15"
42" - 48"	7'-6"	15"
46" - 50"	8'-0"	15"

TABLE E

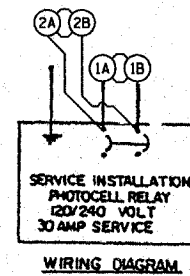


PLACE DOOR ON WIREWAY SIDE. WIREWAY MAY BE ON FRONT, BACK, OR SIDE OF FOUNDATION AS REQUIRED BY THE TRENCHING WHICH SHOULD PERMIT UNIT TO HAVE AS FEW BENDS AS ARE PRACTICAL.

TOP OF FIBER DUCT SHALL BE FLUSH WITH THE TOP OF FOUNDATION FOR DRAINAGE. 5\"/>



ALTERNATE FOUNDATION

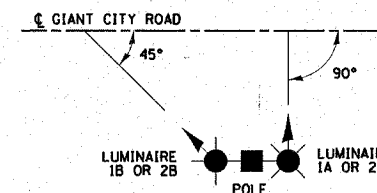


SCHEDULE FOR STEEL LIGHT POLES

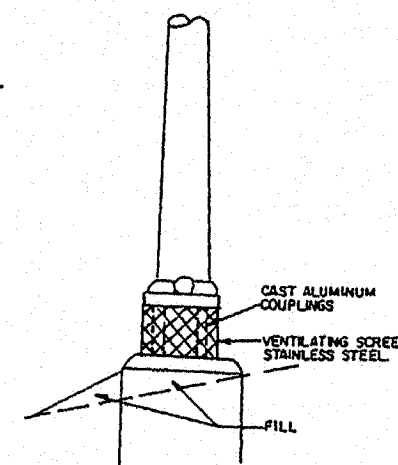
STATION	LIGHT NO	ACTUAL POLE LENGTH	SETBACK FROM E.P.
E. PLEASANT HILL RD STA. 83+85 48' RT.	1A & 1B	45'	20'
GIANT CITY RD STA. 94+00 38' LT.	2A & 2B	45'	20'

LEGEND

- ⬠ PROPOSED STEEL LIGHT POLE, 45' MH, TENON MOUNT, TWIN WITH 250 WATT SODIUM VAPOR LUMINAIRES, MULTI-MOUNT.
- ⬠ PROPOSED SERVICE INSTALLATION PHOTOCELL RELAY.
- PROPOSED UNDERGROUND ELECTRICAL, AS NOTED.
- Ⓐ STEEL LIGHT POLE POSITION INDICATED BY THE NUMBER. THE LETTER INDICATES THE POSITION OF THE LUMINAIRE IN THE WIRE DIAGRAM.



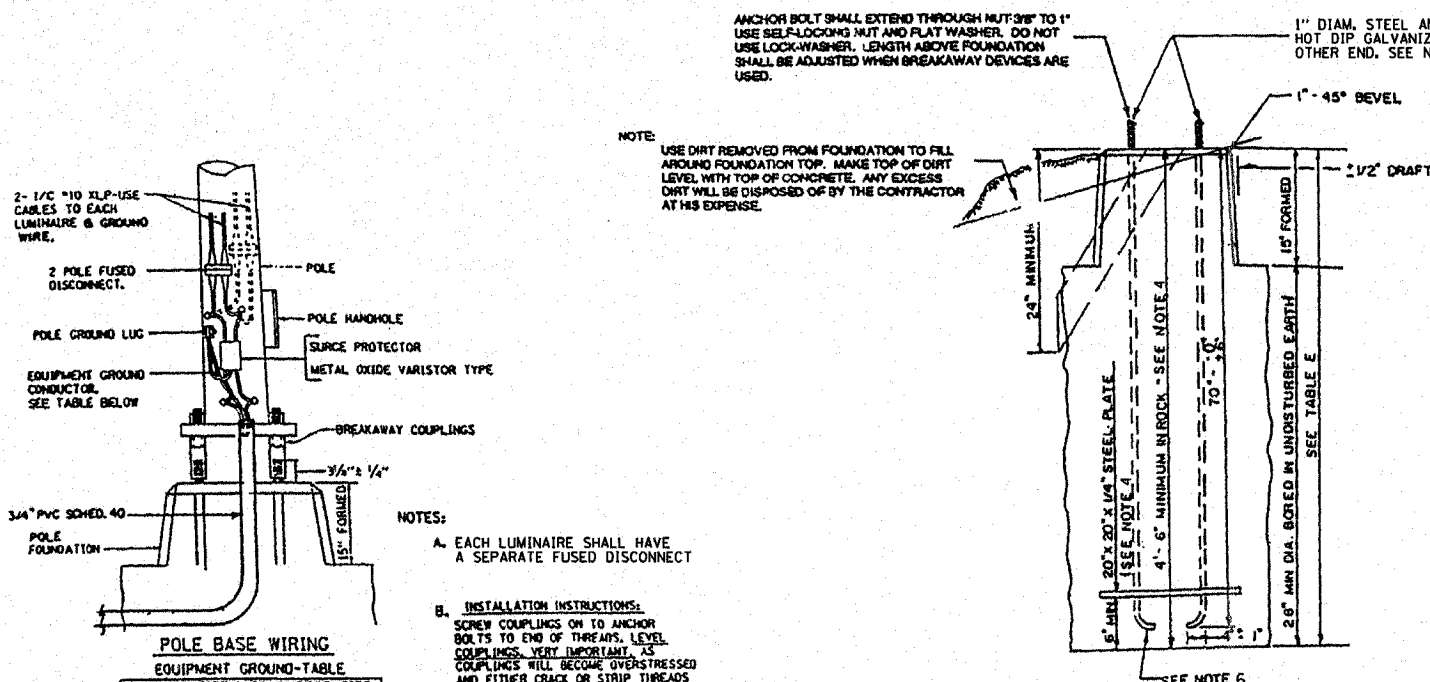
LUMINAIRE AIMING DETAIL



FRANGIBLE METAL BREAKAWAY COUPLING
NO SCALE

SERVICE DETAIL NOTES

- 1 Provide weatherhead at height required by utility company, Egyptian Elec. Contact utility prior to construction and coordinate all service requirements.
- 2 Existing utility power pole. See plans for location.
- 3 Minimum 6 feet of cables for connection by utility company.
- 4 Provide fasteners to pole at 30 inch spacing or as otherwise required by utility company.
- 5 30 amp, 240 volt, 2-pole, 3-wire solid neutral, NEMA 3R fusible disconnect. Fuses at 30 amps with proper fuse reducers.
- 6 3-#10 XLP-USE cables in 3/4" galvanized heavy wall conduit. Side entrances into enclosure shall be made with sealing type locknuts. Provide grounding type insulating conduit bushings and proper bonding at meter, where required by the utility company.
- 7 100 amp, 120/240 volt single phase meter base for underground service, provided by the Contractor to AmericanCIPS Standards.
- 8 3-#10 XLP-USE cables in 3/4" galvanized heavy wall conduit.
- 9 1-#6 bare copper grounding electrode conductor in 1/2" PVC conduit to a 3/8" x 8' ground rod driven 1' below grade.
- 10 3-#10 XLP-USE cables in 3/4" galvanized heavy wall conduit for underground service conductors from utility transformer. Provide grounding type insulating bushings and proper bonding at meter, where required by the utility company.
- 11 Treated wood mounting frame shall consist of 2- 6" x 6" x 10' posts and a minimum of 4- 2" x 4" cross-members, all connected with 1/2" plated carriage bolts.
- 12 Lighting controller / photocell relay assembly.
- 13 2-#10 and 1-#10 equipment grounding conductor in 3/4" PVC Schedule 80 conduit in trench or pushed to light poles.



NOTE: USE DIRT REMOVED FROM FOUNDATION TO FILL AROUND FOUNDATION TOP. MARKS TOP OF DIRT LEVEL WITH TOP OF CONCRETE. ANY EXCESS DIRT WILL BE DISPOSED OF BY THE CONTRACTOR AT HIS EXPENSE.

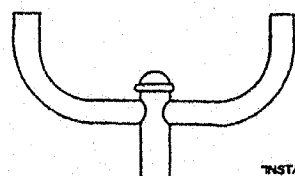
NOTES:

- A. EACH LUMINAIRE SHALL HAVE A SEPARATE FUSED DISCONNECT
- B. INSTALLATION INSTRUCTIONS: SCREW COUPLINGS ON TO ANCHOR BOLTS TO END OF THREADS. LEVEL COUPLINGS. VERY IMPORTANT. AS COUPLINGS WILL BECOME OVERSTRESSED AND EITHER CRACK OR STRIP THREADS INSIDE COUPLING.

POLE BASE WIRING

BREAKER SIZE	CONDUCTOR SIZE
30 AMP.	#10 COPPER
40 AMP.	#10 COPPER
60 AMP.	#10 COPPER
100 AMP.	#8 COPPER

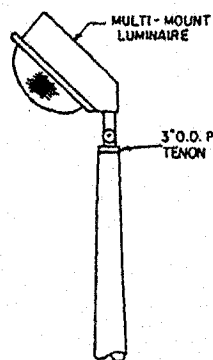
POLE BASE WIRING & LUMINAIRE MOUNTING
NOT TO SCALE



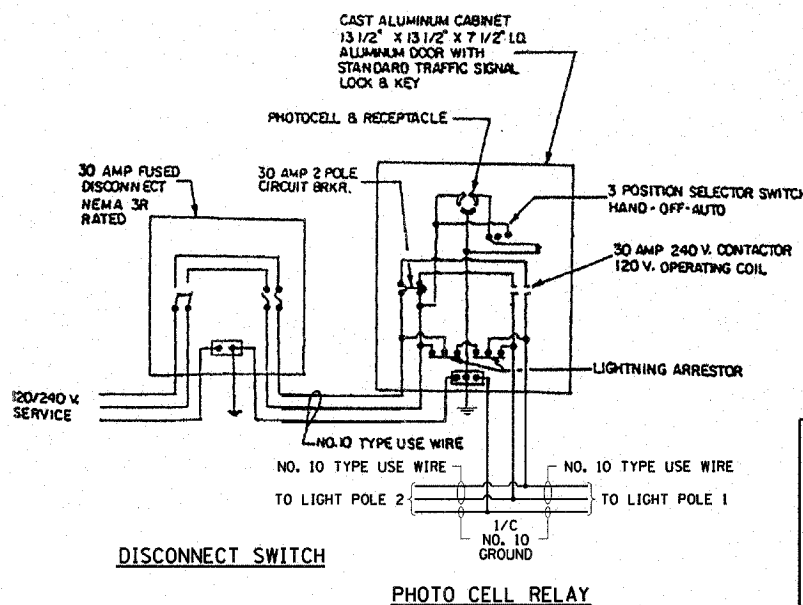
TWIN TENON
NO SCALE

"INSTALL AND ORIENT ARM BRACKET OVER POLE TENON AND PRIMARILY HAND TIGHTEN THE TWO SET SCREWS. USE THIRD HOLE IN ARM BRACKET AS A GUIDE TO DRILL A 2 1/8" DIAMETER HOLE THROUGH TENON. INSTALL AND TIGHTEN SELF-TAPPING SCREW. TIGHTEN SET SCREWS AN ADDITIONAL 1/4 TO 3/8 TURN WITH HEX KEY (NOT PROVIDED). INSTALL LOCKNUTS ON SET SCREWS IF THREADED PROJECTION ALLOWS."

POLE SHALL MEET AASHTO STANDARD SPECIFICATIONS FOR 80 M.P.H. WIND LOADING & 90 LB. 4.0 SQ. FT. E.P.A. LUMINAIRE.

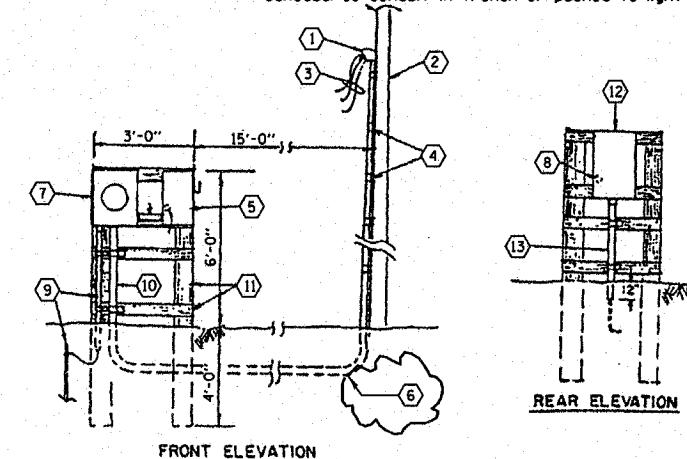


TENON
NO SCALE



DISCONNECT SWITCH

PHOTO CELL RELAY



FRONT ELEVATION

REAR ELEVATION

HLR
Rios, Berry and Associates
A Division of Hampton, Lenzini and Renwick, Inc.
Civil & Structural Engineers
801 S. Durkin Drive
Springfield, Illinois 62704
217-546-3400

Account Number: 03-47-0001-1
Date: 09-26-06
DESIGNED: L.F.S. CHECKED: S.W.M. DRAWN: W.J.S.

LIGHTING DETAIL
SECTION 99-02118-00-FP
F.A.U. 9713 / EAST PLEASANT HILL ROAD
JACKSON COUNTY

Revised 5/27/07