

LEGEND

1 A.R., STA. 82+88.00
8'x 5'x 42' BOX CULVERT. TO BE REMOVED.

93+92.12
50.00' LT.
94+00.00
38.00' LT.

94+25.00
50.00' LT.
85.00' LT.

PARCEL 25
BILL J. & FAYE MARTIN (2/3 INTEREST)
ROBERT & BETTY MARTIN (1/3 INTEREST)

EAST PLEASANT HILL ROAD STA. 84+57.16
GIANT CITY ROAD STA. 94+65.98

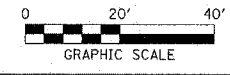
LEGEND

[Cross-hatched box] TREE REMOVAL ACRE

TEMP. EASEMENT
95+00.00
85.00' LT.

PROPOSED R.O.W. LINE
CONSTRUCTION LIMITS

3/4" PVC TRENCH
2 #10 1/C
1 #10 1/C GND



**CURVE #5
CURVE DATA**

PI STA. 81+47.63
Δ = 25° 23' 08.10" (LT.)
D = 7° 30' 00.00"
R = 763.94'
T = 172.06'
L = 338.47'
E = 19.14
PC STA. 79+75.57
PT STA. 83+14.04
TRANSITION
STA. 78+72.05 TO STA. 80+03.41
STA. 82+86.20 TO STA. 83+97.56
S.E. = 4.5%

WETLANDS SITE 5
AREA 2
949 SQ. FT.

PARCEL 25
BILL J. & FAYE MARTIN (2/3 INTEREST)
ROBERT & BETTY MARTIN (1/3 INTEREST)

PROPOSED IMPROVEMENT

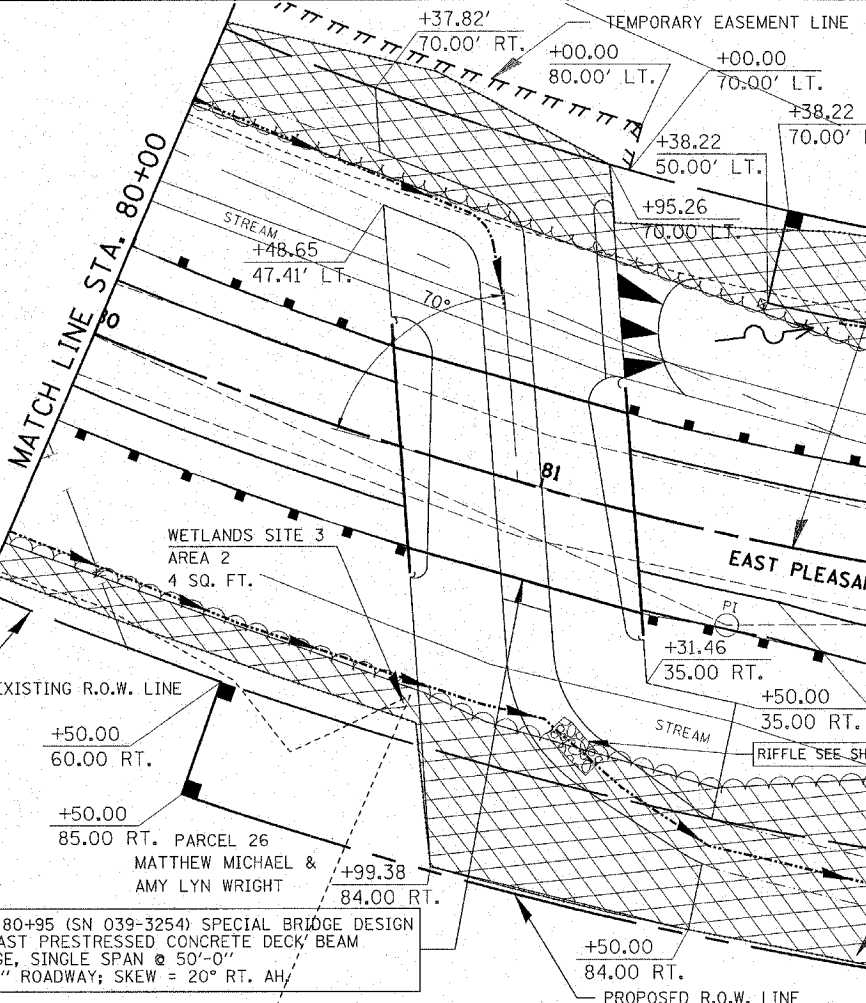
CONSTRUCTION LIMITS

PROPOSED R.O.W. LINE
WETLANDS SITE 5
AREA 1
53 SQ. FT.

EXISTING R.O.W. LINE

TEMPORARY EASEMENT LINE

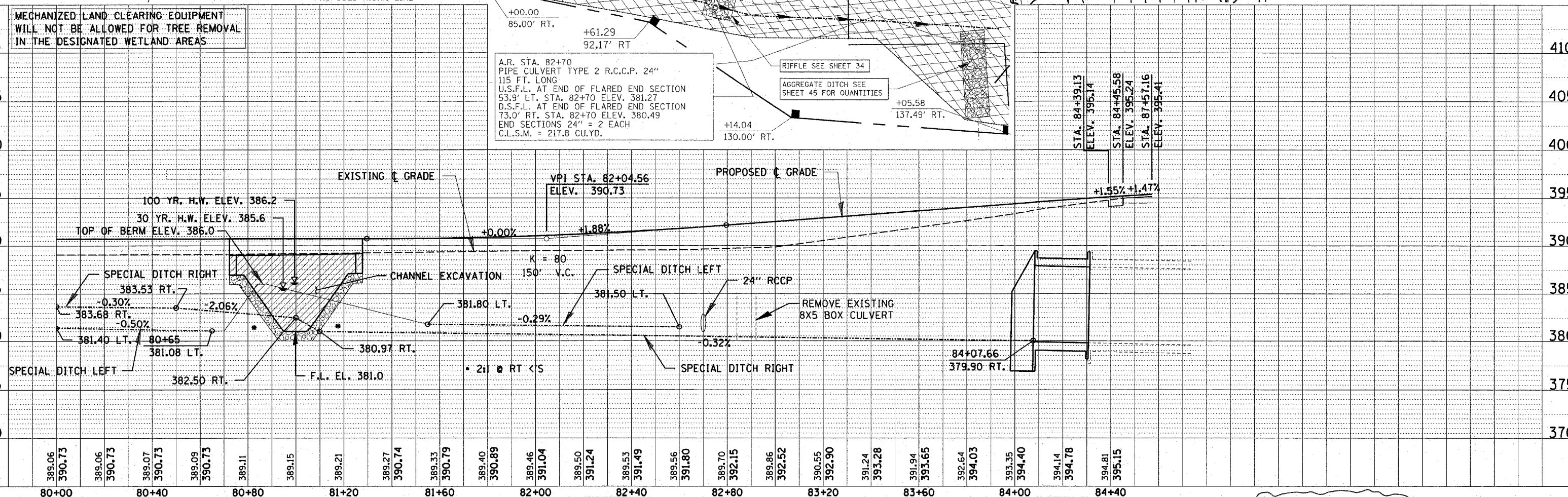
MATCH LINE STA. 80+00



MECHANIZED LAND CLEARING EQUIPMENT
WILL NOT BE ALLOWED FOR TREE REMOVAL
IN THE DESIGNATED WETLAND AREAS

A.R. STA. 82+70
PIPE CULVERT TYPE 2 R.C.C.P. 24"
115 FT. LONG
U.S.F.L. AT END OF FLARED END SECTION
53.9' LT. STA. 82+70 ELEV. 381.27
D.S.F.L. AT END OF FLARED END SECTION
73.0' RT. STA. 82+70 ELEV. 380.49
END SECTIONS 24" = 2 EACH
C.L.S.M. = 217.8 CU.YD.

RIFFLER SEE SHEET 34
AGGREGATE DITCH SEE SHEET 45 FOR QUANTITIES



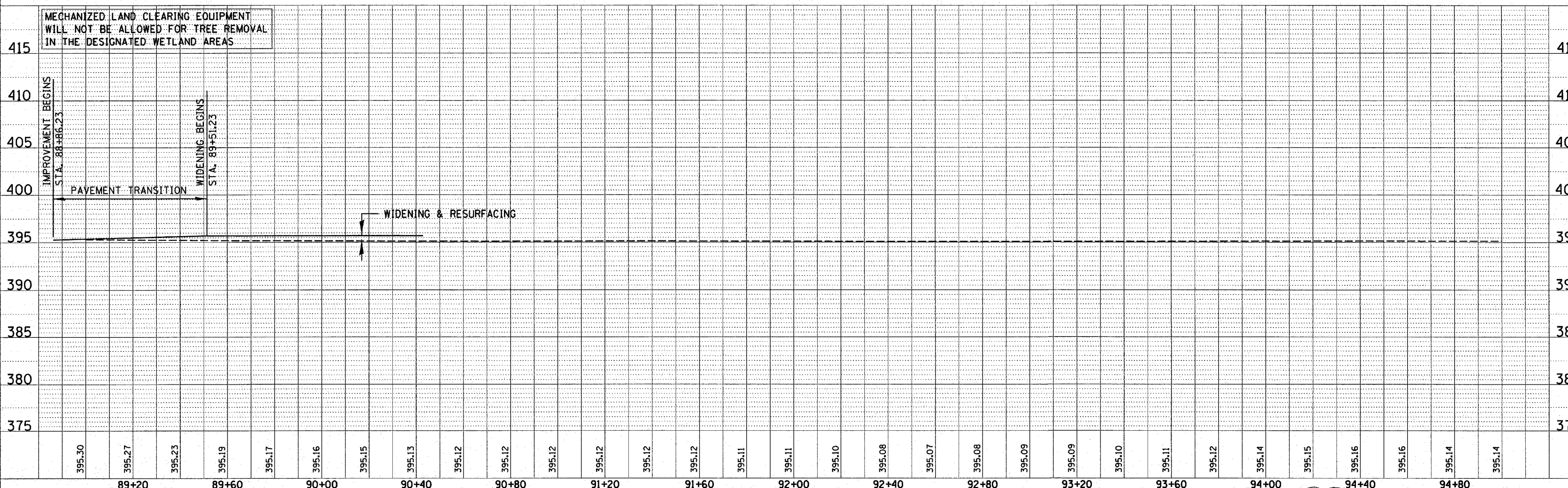
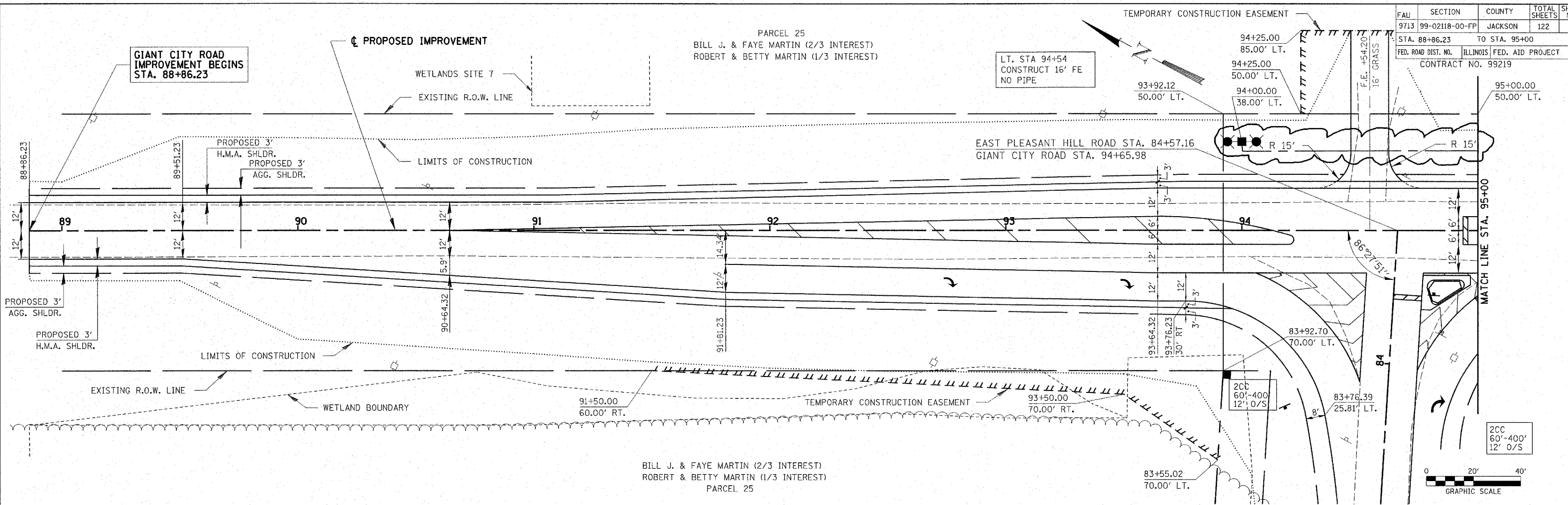
Revised 5/29/07

PLAN
 DATE: 19-MAR-07 15:32
 BY: [redacted]
 CHECKED: [redacted]
 DRAWN: [redacted]
 TITLE: GIANT CITY ROAD IMPROVEMENT

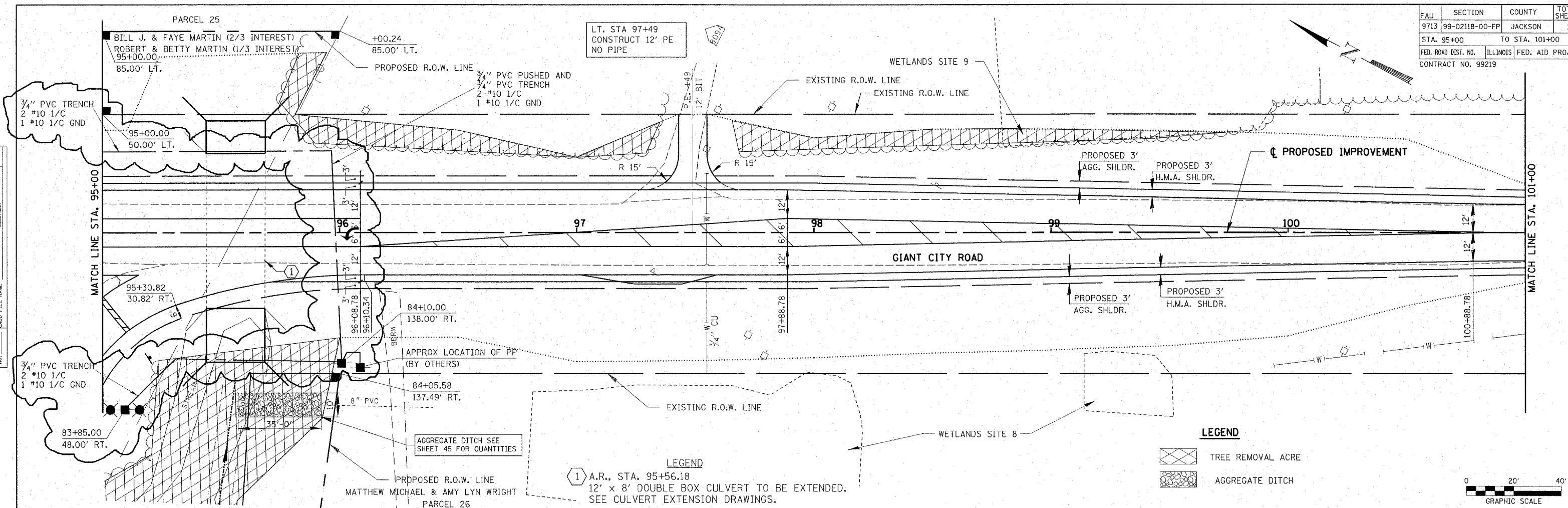
PROFILE
 DATE: 19-MAR-07 15:32
 BY: [redacted]
 CHECKED: [redacted]
 DRAWN: [redacted]
 TITLE: GIANT CITY ROAD IMPROVEMENT

FAU	SECTION	COUNTY	TOTAL SHEETS	SHEET NO.
9713	99-02118-00-FP	JACKSON	122	30

STA. 88+86.23 TO STA. 95+00
 ILLINOIS FED. AID PROJECT
 CONTRACT NO. 99219



Revised 5/29/07



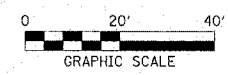
LEGEND

① A.R., STA. 95+56.18
12' x 8' DOUBLE BOX CULVERT TO BE EXTENDED.
SEE CULVERT EXTENSION DRAWINGS.

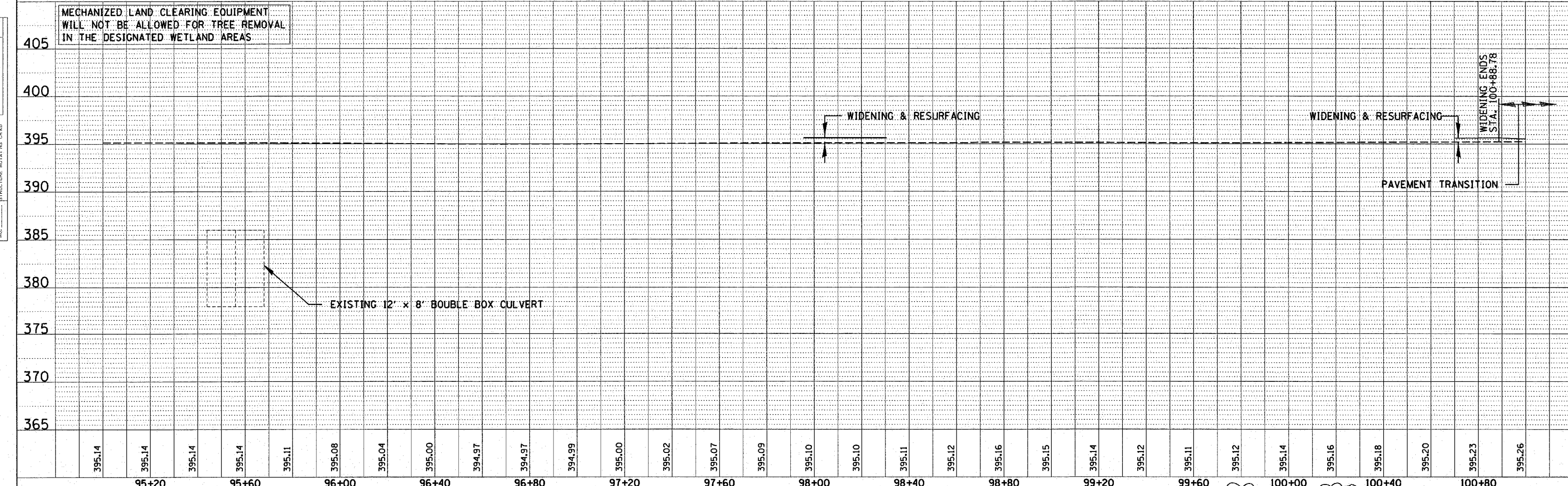
LEGEND

☒ TREE REMOVAL ACRE

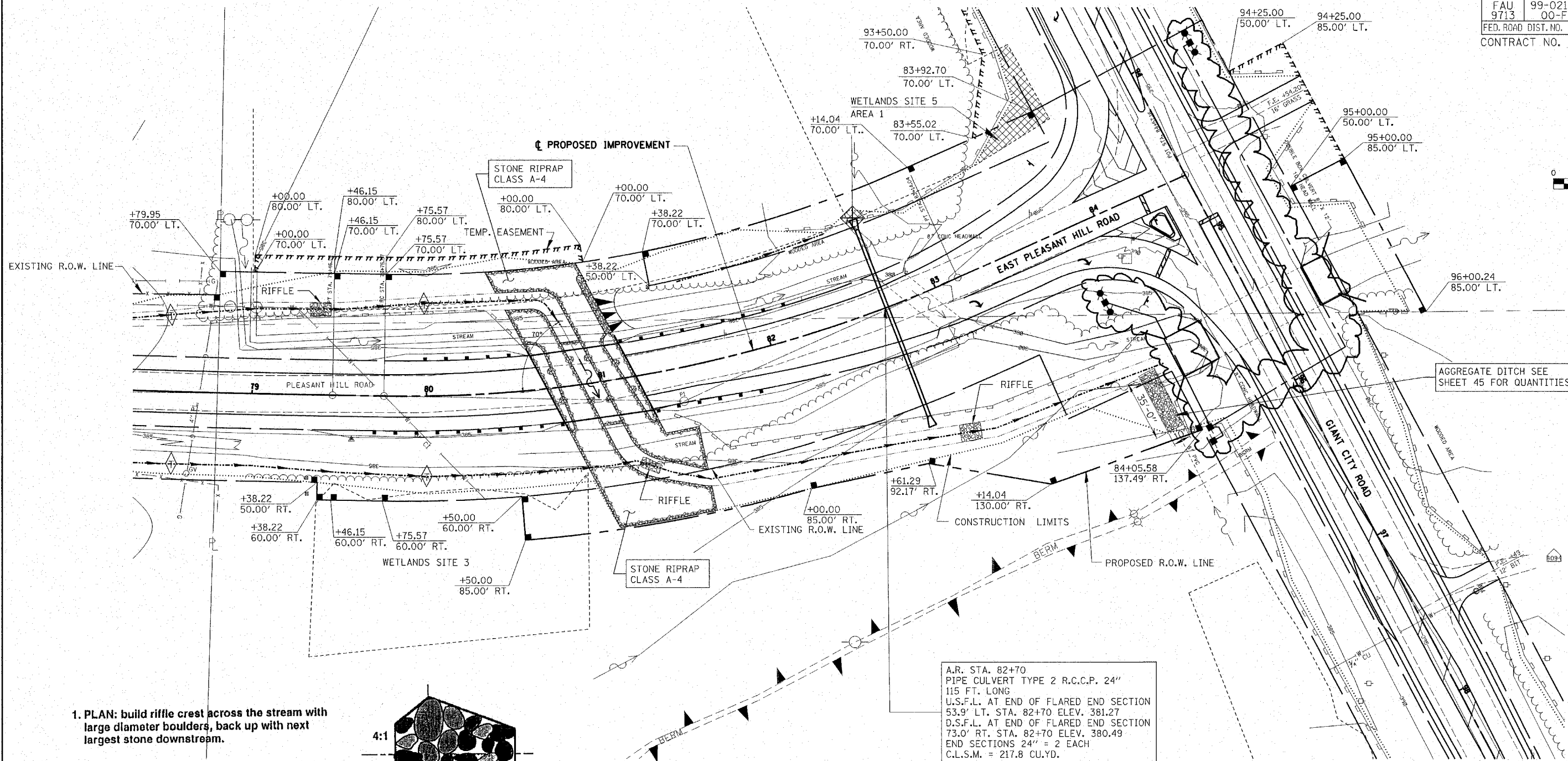
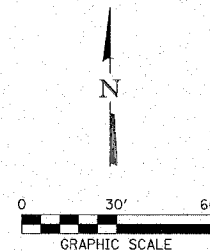
☒ AGGREGATE DITCH



**MECHANIZED LAND CLEARING EQUIPMENT
WILL NOT BE ALLOWED FOR TREE REMOVAL
IN THE DESIGNATED WETLAND AREAS**



Revised 5/29/07



1. PLAN: build riffle crest across the stream with large diameter boulders, back up with next largest stone downstream.

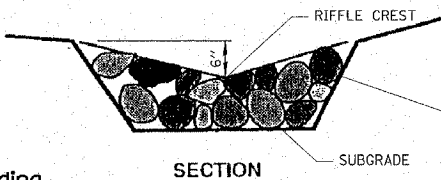
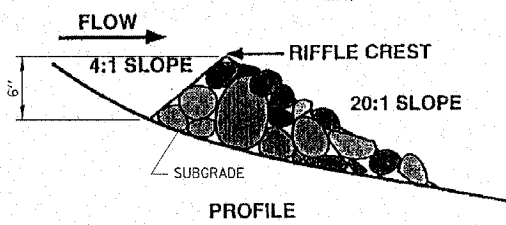
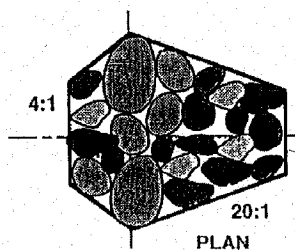
2. PROFILE: construct downstream face of riffle at 20:1 slope and upstream face at 4:1 slope.

3. CROSS-SECTION: V-shape crest down towards the centre of channel.

4. SURFACE: space large surface rocks 8" to 12" apart on the downstream face of the riffle to form low flow fish passage channels.

5. BANKS: rip-rap banks with embedded rock to the floodplain level on both sides of the riffle.

6. RIFFLES: construction of riffles including stone riprap class A4 is to be considered as incidental to Earth Excavation.



RIFFLE LOCATION	
STA.	79+38.00 LT.
STA.	81+20.00 RT.
STA.	82+87.00 RT.

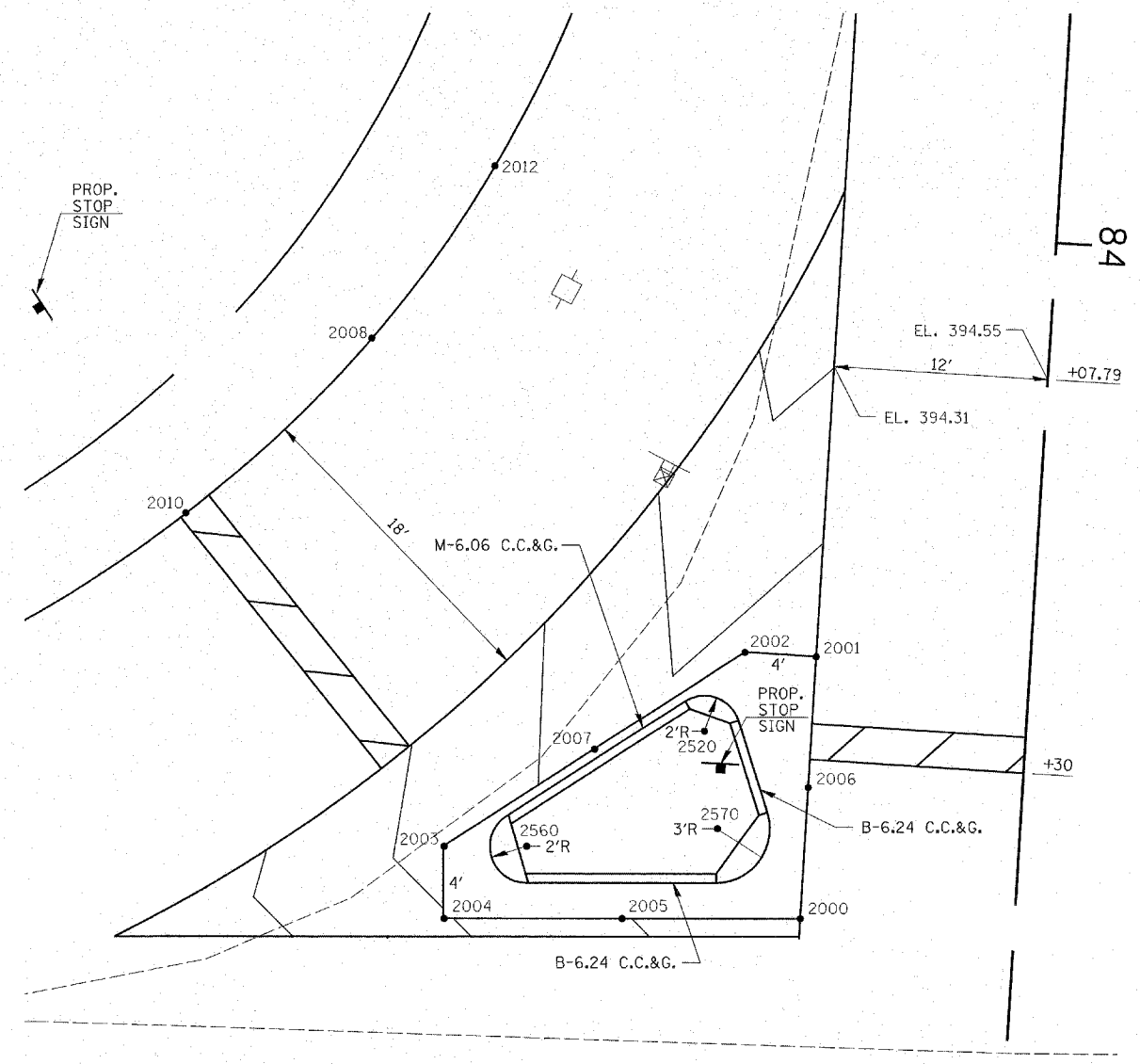
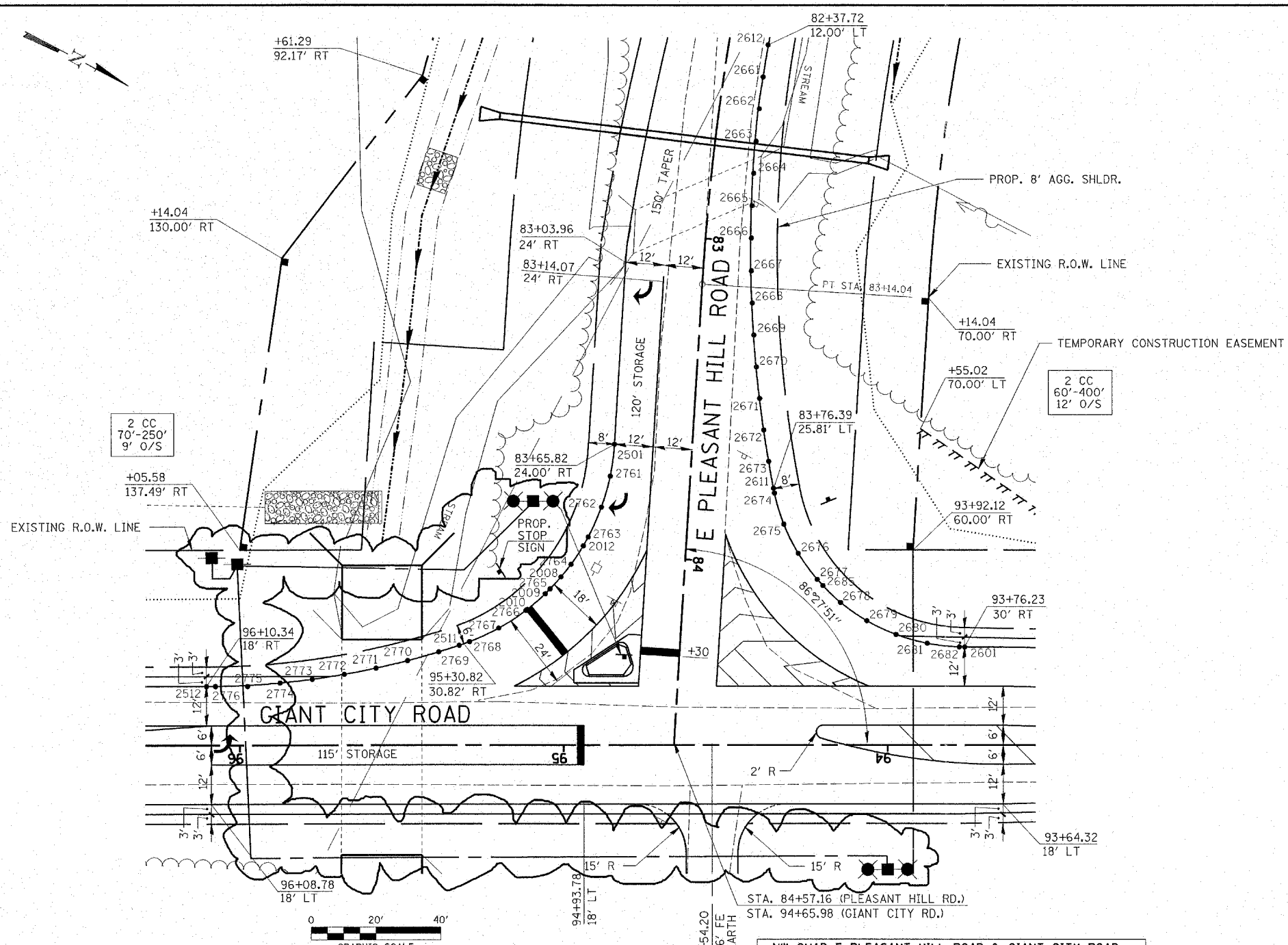
A.R. STA. 82+70
 PIPE CULVERT TYPE 2 R.C.C.P. 24"
 115 FT. LONG
 U.S.F.L. AT END OF FLARED END SECTION
 53.9' LT. STA. 82+70 ELEV. 381.27
 D.S.F.L. AT END OF FLARED END SECTION
 73.0' RT. STA. 82+70 ELEV. 380.49
 END SECTIONS 24" = 2 EACH
 C.L.S.M. = 217.8 CU.YD.

HLR
 Rice, Berry and Associates
 A Division of Hampton,
 Lenzini and Renwick, Inc.
 Civil & Structural Engineers
 801 S. Durkin Drive
 Springfield, Illinois 62704
 217-546-3400

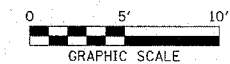
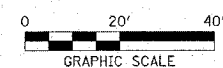
Account Number
 03-47-0001-1
 Date: 03-19-07
 DESIGNED: L.F.S. CHECKED: S.W.M. DRAWN: W.J.S.

STREAM PLAN
 SECTION 99-02118-00-FP
 F.A.U. 9713 / EAST PLEASANT HILL ROAD
 JACKSON COUNTY

Revised 5/29/07



ISLAND DETAIL



POINT No.	ELEV.	E PLEASANT HILL		GIANT CITY	
		STA M.L.	OFF. M.L.	STA M.L.	OFF. M.L.
2501	393.73	83+65.82	24.00 RT.	94+84.27	92.66 RT.
2761	393.76	83+75.78	24.71 RT.	94+85.60	82.76 RT.
2762	393.79	83+85.55	26.84 RT.	94+88.32	73.15 RT.
2763	393.75	83+94.91	30.33 RT.	94+92.39	64.02 RT.
2012	393.72	83+97.71	31.69 RT.	94+93.92	61.31 RT.
2764	393.87	84+03.68	35.12 RT.	94+97.71	55.57 RT.
2008	393.98	84+07.79	37.98 RT.	95+00.82	51.64 RT.
2765	394.09	84+11.67	41.11 RT.	95+04.19	47.95 RT.
2009	394.14	84+13.23	42.50 RT.	95+05.68	46.48 RT.
2010	394.30	84+18.39	47.78 RT.	95+11.26	41.67 RT.
2766	394.31	84+18.74	48.18 RT.	95+11.68	41.34 RT.
2767	394.53	84+24.72	56.18 RT.	95+20.04	35.87 RT.
2768	394.75	84+29.51	64.95 RT.	95+29.09	31.63 RT.
2511	394.82	84+30.83	68.06 RT.	95+32.28	30.50 RT.
2769	394.85	84+33.20	74.24 RT.	95+38.59	28.52 RT.
2770	394.90	84+36.47	83.69 RT.	95+48.22	25.84 RT.
2771	394.94	84+39.36	93.26 RT.	95+57.95	23.55 RT.
2772	394.97	84+41.87	102.94 RT.	95+67.77	21.65 RT.
2773	395.00	84+43.98	112.72 RT.	95+77.66	20.15 RT.
2774	395.01	84+45.71	122.57 RT.	95+87.60	19.04 RT.
2775	395.02	84+47.03	132.48 RT.	95+97.57	18.33 RT.
2776	395.02	84+47.96	142.43 RT.	96+07.56	18.02 RT.
2512	395.02	84+48.15	145.20 RT.	96+10.34	18.00 RT.

INTERSECTION DETAIL

POINT No.	ELEV.	E PLEASANT HILL		GIANT CITY	
		STA M.L.	OFF. M.L.	STA M.L.	OFF. M.L.
2612	390.92	82+37.72	12.00 LT.	94+36.74	216.73 RT.
2661	391.07	82+47.88	12.06 LT.	94+38.22	206.84 RT.
2662	391.21	82+58.04	12.23 LT.	94+39.47	196.92 RT.
2663	391.37	82+68.20	12.53 LT.	94+40.46	186.97 RT.
2664	391.54	82+78.36	12.94 LT.	94+41.20	176.99 RT.
2665	391.72	82+88.52	13.47 LT.	94+41.70	167.01 RT.
2666	391.97	82+98.68	14.11 LT.	94+41.94	157.01 RT.
2667	392.22	83+08.85	14.87 LT.	94+41.94	147.01 RT.
2668	392.47	83+18.91	15.76 LT.	94+41.68	137.01 RT.
2669	392.73	83+28.85	16.88 LT.	94+41.17	127.07 RT.
2670	392.88	83+38.75	18.25 LT.	94+40.42	117.06 RT.
2671	393.04	83+48.62	19.87 LT.	94+39.42	107.11 RT.
2672	393.18	83+58.44	21.74 LT.	94+38.16	97.19 RT.
2673	393.33	83+68.22	23.85 LT.	94+36.66	87.30 RT.
2611	393.44	83+76.39	25.81 LT.	94+35.21	79.02 RT.
2674	393.45	83+77.93	26.22 LT.	94+34.90	77.46 RT.
2675	393.51	83+87.30	29.70 LT.	94+32.00	67.90 RT.
2676	393.57	83+95.95	34.68 LT.	94+27.57	58.95 RT.
2677	393.63	84+03.66	41.04 LT.	94+21.70	50.86 RT.
2685	393.65	84+05.50	42.91 LT.	94+19.95	48.91 RT.
2678	393.83	84+10.20	48.58 LT.	94+14.58	43.86 RT.
2679	394.07	84+15.41	57.11 LT.	94+06.39	38.14 RT.
2680	394.31	84+19.13	66.38 LT.	93+97.37	33.85 RT.
2681	394.55	84+21.26	76.13 LT.	93+87.76	31.12 RT.
2682	394.79	84+21.74	86.11 LT.	93+77.83	30.02 RT.
2601	394.83	84+21.66	87.72 LT.	93+76.23	30.00 RT.

POINT No.	ELEV.	E PLEASANT HILL		GIANT CITY	
		STA M.L.	OFF. M.L.	STA M.L.	OFF. M.L.
2000	395.07	84+38.88	12.00 RT.	94+76.82	19.00 RT.
2006	394.76	84+31.56	12.00 RT.	94+76.37	26.30 RT.
2001	394.62	84+24.25	12.00 RT.	94+75.91	33.60 RT.
2002	394.55	84+24.25	16.00 RT.	94+79.91	33.85 RT.
2007	394.74	84+30.19	24.09 RT.	94+88.35	28.42 RT.
2003	394.93	84+36.12	32.18 RT.	94+96.79	23.00 RT.
2004	395.03	84+40.41	31.85 RT.	94+96.73	19.00 RT.
2005	395.05	84+39.64	21.93 RT.	94+86.78	19.00 RT.

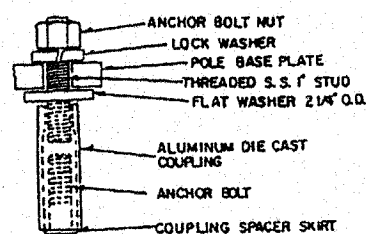
POINT No.	ELEV.	STA M.L.	OFF. M.L.	STA M.L.	OFF. M.L.
2520		84+28.72	18.00 RT.	94+82.18	29.50 RT.
2560		84+35.83	27.57 RT.	94+92.17	23.00 RT.
2570		84+34.18	17.00 RT.	94+81.52	24.00 RT.

Rice, Berry and Associates
A Division of Hampton, Lenzini and Renwick, Inc.
Civil & Structural Engineers
801 S. Durkin Drive
Springfield, Illinois 62704
217-546-3400

Account Number
03-47-0001-1
Date: 10-05-06
DESIGNED: L.F.S. CHECKED: S.W.M. DRAWN: W.J.S.

INTERSECTION DETAILS
SECTION 99-02118-00-FP
F.A.U. 9713 / EAST PLEASANT HILL ROAD
JACKSON COUNTY

Revised 5/29/07

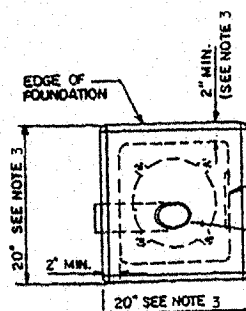


TYP BREAKAWAY COUPLING

LOW MOUNT DESIGN TABLE

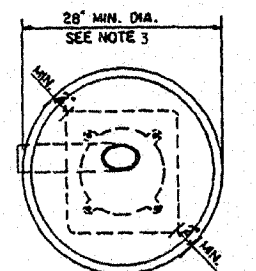
MOUNTING FOUNDATION HEIGHT	DEPTH	BOLT CIRCLE
3' OR LESS	5'-0"	11 1/2"
3' - 33"	6'-0"	11 1/2"
3'6" - 40"	7'-0"	15"
4' - 48"	7'-6"	15"
46" - 50"	8'-0"	15"

TABLE E

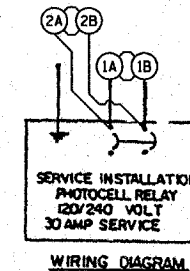


PLACE DOOR ON WIREWAY SIDE. WIREWAY MAY BE ON FRONT, BACK, OR SIDE OF FOUNDATION AS REQUIRED BY THE TRENCHING WHICH SHOULD PERMIT UNIT TO HAVE AS FEW BENDS AS ARE PRACTICAL.

TOP OF FIBER DUCT SHALL BE FLUSH WITH THE TOP OF FOUNDATION FOR DRAINAGE. 5\"/>



ALTERNATE FOUNDATION



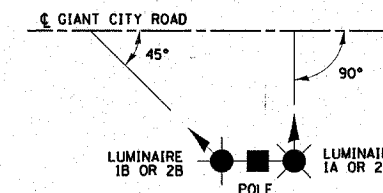
WIRING DIAGRAM

SCHEDULE FOR STEEL LIGHT POLES

STATION	LIGHT NO	ACTUAL POLE LENGTH	SETBACK FROM E.P.
E. PLEASANT HILL RD STA. 83+85 48' RT.	1A & 1B	45'	20'
GIANT CITY RD STA. 94+00 38' LT.	2A & 2B	45'	20'

LEGEND

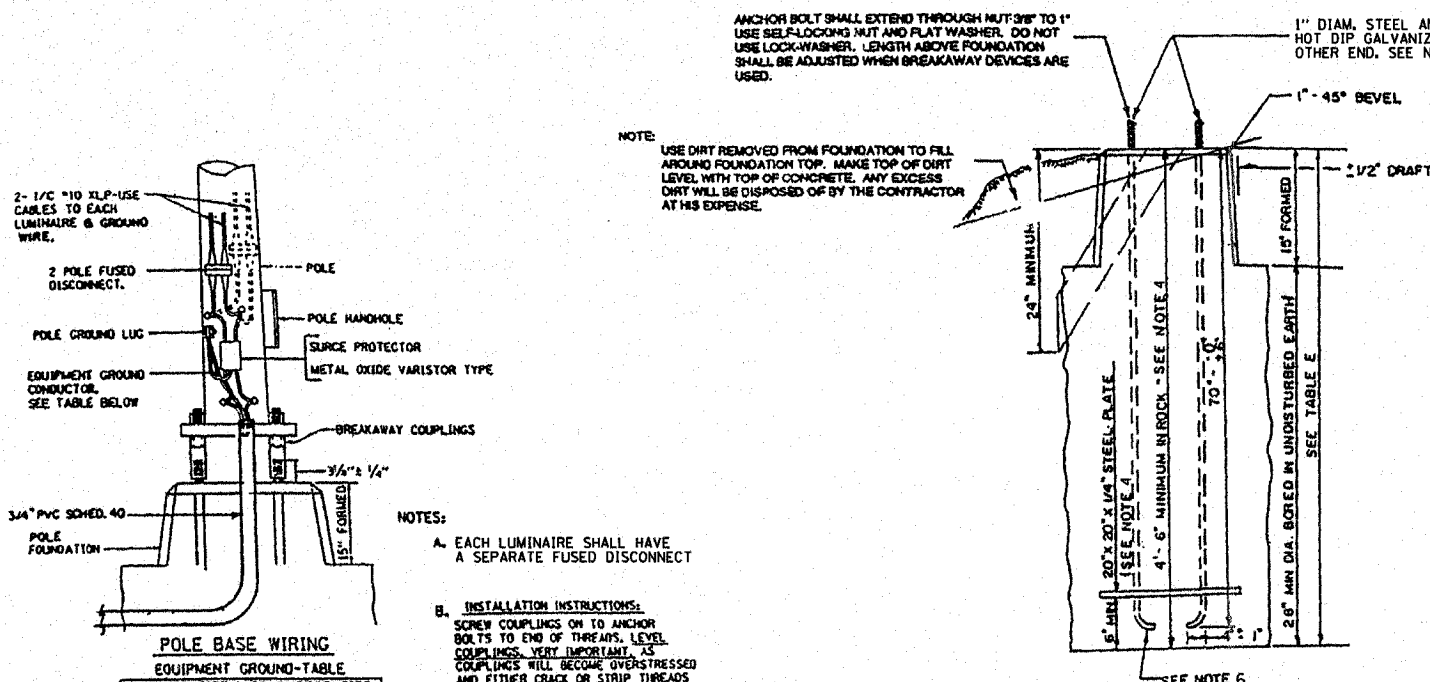
- ⬠ PROPOSED STEEL LIGHT POLE, 45' MH, TENON MOUNT, TWIN WITH 250 WATT SODIUM VAPOR LUMINAIRES, MULTI-MOUNT.
- ⬠ PROPOSED SERVICE INSTALLATION PHOTOCELL RELAY.
- PROPOSED UNDERGROUND ELECTRICAL, AS NOTED.
- ⓁA STEEL LIGHT POLE POSITION INDICATED BY THE NUMBER. THE LETTER INDICATES THE POSITION OF THE LUMINAIRE IN THE WIRE DIAGRAM.



LUMINAIRE AIMING DETAIL

SERVICE DETAIL NOTES

- 1 Provide weatherhead at height required by utility company, Egyptian Elec. Contact utility prior to construction and coordinate all service requirements.
- 2 Existing utility power pole. See plans for location.
- 3 Minimum 6 feet of cables for connection by utility company.
- 4 Provide fasteners to pole at 30 inch spacing or as otherwise required by utility company.
- 5 30 amp, 240 volt, 2-pole, 3-wire solid neutral, NEMA 3R fusible disconnect. Fuses at 30 amps with proper fuse reducers.
- 6 3-#10 XLP-USE cables in 3/4" galvanized heavy wall conduit. Side entrances into enclosure shall be made with sealing type locknuts. Provide grounding type insulating conduit bushings and proper bonding at meter, where required by the utility company.
- 7 100 amp, 120/240 volt single phase meter base for underground service, provided by the Contractor to AmericanCIPS Standards.
- 8 3-#10 XLP-USE cables in 3/4" galvanized heavy wall conduit.
- 9 1-#6 bare copper grounding electrode conductor in 1/2" PVC conduit to a 3/8" x 8' ground rod driven 1' below grade.
- 10 3-#10 XLP-USE cables in 3/4" galvanized heavy wall conduit for underground service conductors from utility transformer. Provide grounding type insulating bushings and proper bonding at meter, where required by the utility company.
- 11 Treated wood mounting frame shall consist of 2- 6" x 6" x 10' posts and a minimum of 4- 2" x 4" cross-members, all connected with 1/2" plated carriage bolts.
- 12 Lighting controller / photocell relay assembly.
- 13 2-#10 and 1-#10 equipment grounding conductor in 3/4" PVC Schedule 80 conduit in trench or pushed to light poles.



NOTE: ANCHOR BOLT SHALL EXTEND THROUGH NUT 3/8" TO 1" USE SELF-LOCKING NUT AND FLAT WASHER. DO NOT USE LOCK-WASHER. LENGTH ABOVE FOUNDATION SHALL BE ADJUSTED WHEN BREAKAWAY DEVICES ARE USED.

NOTE: USE DIRT REMOVED FROM FOUNDATION TO FILL AROUND FOUNDATION TOP. MARKS TOP OF DIRT LEVEL WITH TOP OF CONCRETE. ANY EXCESS DIRT WILL BE DISPOSED OF BY THE CONTRACTOR AT HIS EXPENSE.

NOTES:

1. AFTER POURING CONCRETE THE FORM SHALL REMAIN.
2. THE TOP 15" ONLY SHALL BE FORMED. CONCRETE BOUNDED BY UNDISTURBED EARTH ONLY SHALL FILL THE REMAINDER OF THE HOLE.
3. MINIMUM CLEARANCE FROM THE OUTSIDE EDGE OF FOUNDATION TO ANY PART OF THE POLE BASEPLATE SHALL BE 2"
4. THE DEPTH OF THE FOUNDATION MAY BE REDUCED 6" FOR EVERY FOOT OF ROCK ENCOUNTERED WITH A MINIMUM DEPTH OF 4'-6" WHEN THE DEPTH OF THE FOUNDATION IS DECREASED TO LESS THAN 6'-0" THE ANCHOR BOLTS SHALL BE CUT, THREADED, AND A STEEL PLATE 20"X20"X1/4" SHALL BE INSTALLED ON THE ANCHOR BOLTS 6" ABOVE THE BOTTOM OF THE EXCAVATION. THE COST SHALL BE INCIDENTAL TO THE FOUNDATION.
5. ON PARAPET WALLS USE 1/4" DIAM. ANCHOR BOLTS. USE SELF-LOCKING NUT AND FLAT WASHER. DO NOT USE LOCKWASHER (FOR DETAILS, SEE STANDARD 3.2.11 OF BRIDGE DESIGN MANUAL).
6. BEND RADIUS SHALL BE FOUR TIMES BOLT DIAMETER.
7. CONNECT GROUND WIRES TO POLE BASE GROUND LUG, NOT ANCHOR BOLTS OF TRANSFORMER BASE.

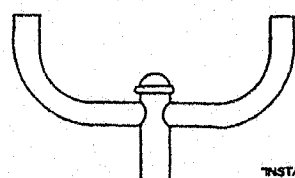
POLE BASE WIRING

EQUIPMENT GROUND-TABLE

BREAKER SIZE	CONDUCTOR SIZE
30 AMP.	#10 COPPER
40 AMP.	#10 COPPER
60 AMP.	#10 COPPER
100 AMP.	#8 COPPER

POLE BASE WIRING & LUMINAIRE MOUNTING

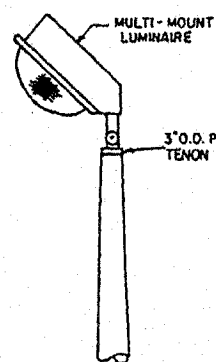
NOT TO SCALE



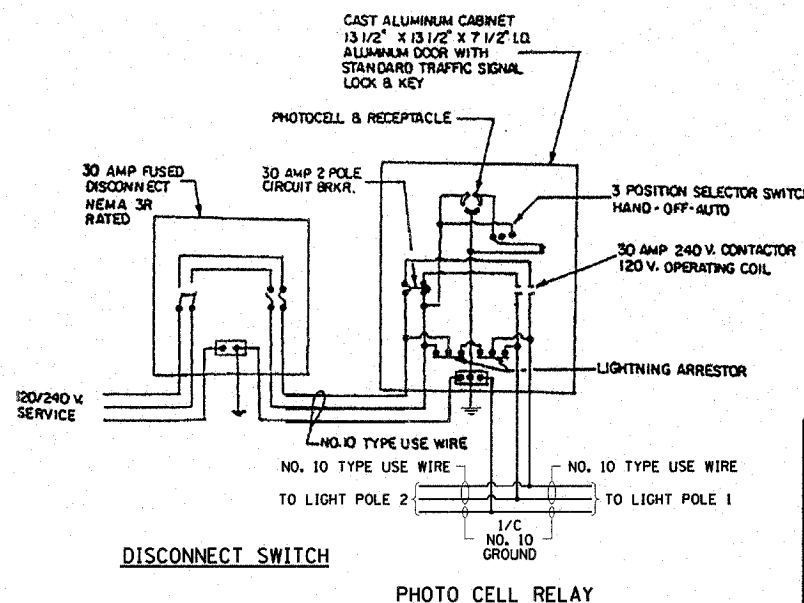
TWIN TENON
NO SCALE

"INSTALL AND ORIENT ARM BRACKET OVER POLE TENON AND PRIMARILY HAND TIGHTEN THE TWO SET SCREWS. USE THIRD HOLE IN ARM BRACKET AS A GUIDE TO DRILL A 2 1/8" DIAMETER HOLE THROUGH TENON. INSTALL AND TIGHTEN SELF-TAPPING SCREW. TIGHTEN SET SCREWS AN ADDITIONAL 1/4 TO 3/8 TURN WITH HEX KEY (NOT PROVIDED). INSTALL LOCKNUTS ON SET SCREWS IF THREADED PROJECTION ALLOWS."

POLE SHALL MEET AASHTO STANDARD SPECIFICATIONS FOR 80 M.P.H. WIND LOADING & 90 LB. 4.0 SQ. FT. E.P.A. LUMINAIRE.

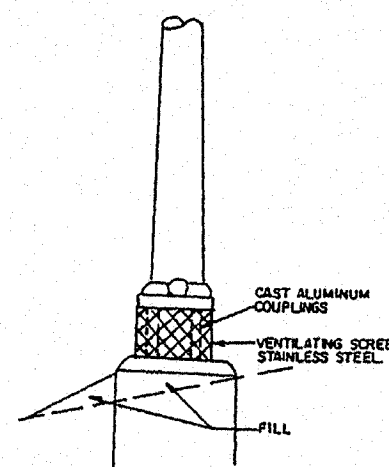


TENON
NO SCALE

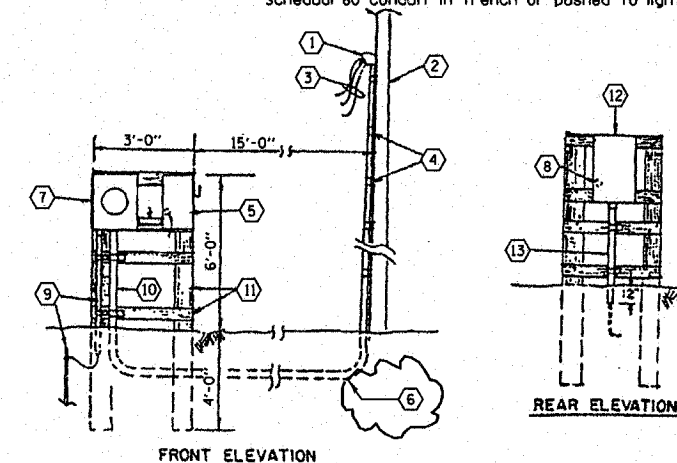


DISCONNECT SWITCH

PHOTO CELL RELAY



FRANGIBLE METAL BREAKAWAY COUPLING
NO SCALE



HLR

Rice, Berry and Associates
A Division of Hampton, Lenzini and Renwick, Inc.
Civil & Structural Engineers
801 S. Durkin Drive
Springfield, Illinois 62704
217-546-3400

Account Number
03-47-0001-1
Date: 09-26-06
DESIGNED: L.F.S. CHECKED: S.W.M. DRAWN: W.J.S.

LIGHTING DETAIL

SECTION 99-02118-00-FP

F.A.U. 9713 / EAST PLEASANT HILL ROAD

JACKSON COUNTY

Revised 5/27/07