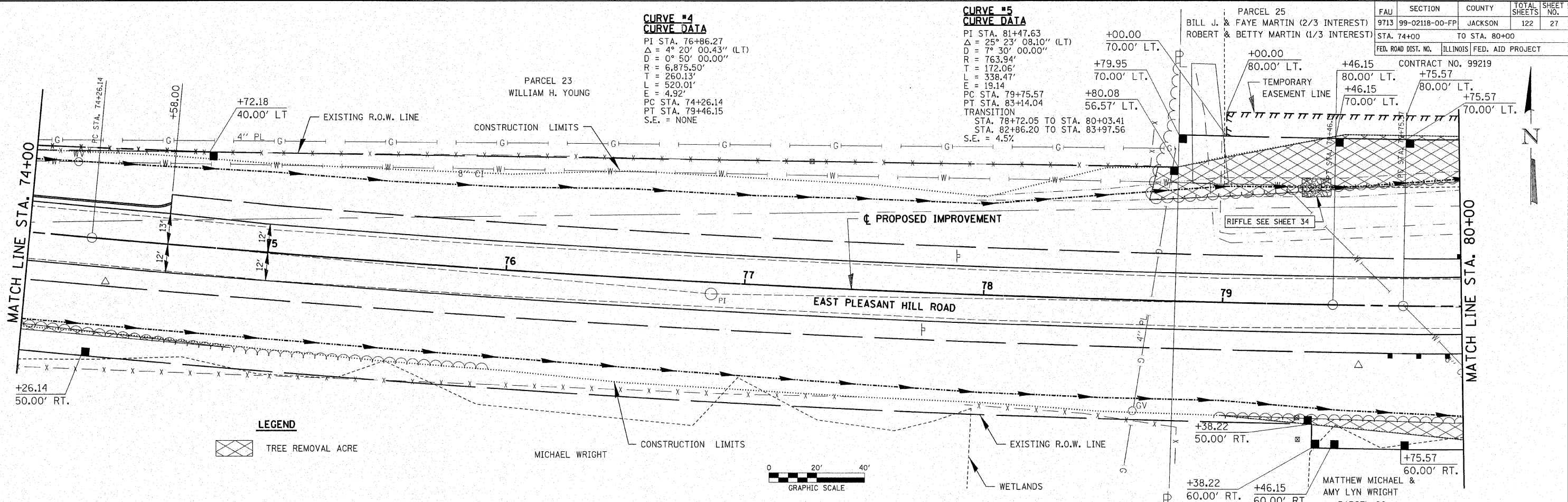


DATE	BY
2015-03-07	15:28
PLANNED	BY
NOTED	BY
NOTED	BY
NO.	NO.

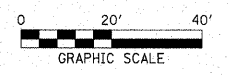
DATE	BY
2015-03-07	15:28
PROFILING	BY
NOTED	BY
NOTED	BY
NO.	NO.

**CURVE #4  
CURVE DATA**  
 PI STA. 76+86.27  
 $\Delta = 4^{\circ} 20' 00.43''$  (LT)  
 $D = 0^{\circ} 50' 00.00''$   
 $R = 6,875.50'$   
 $T = 260.13'$   
 $L = 520.01'$   
 $E = 4.92'$   
 PC STA. 74+26.14  
 PT STA. 79+46.15  
 S.E. = NONE

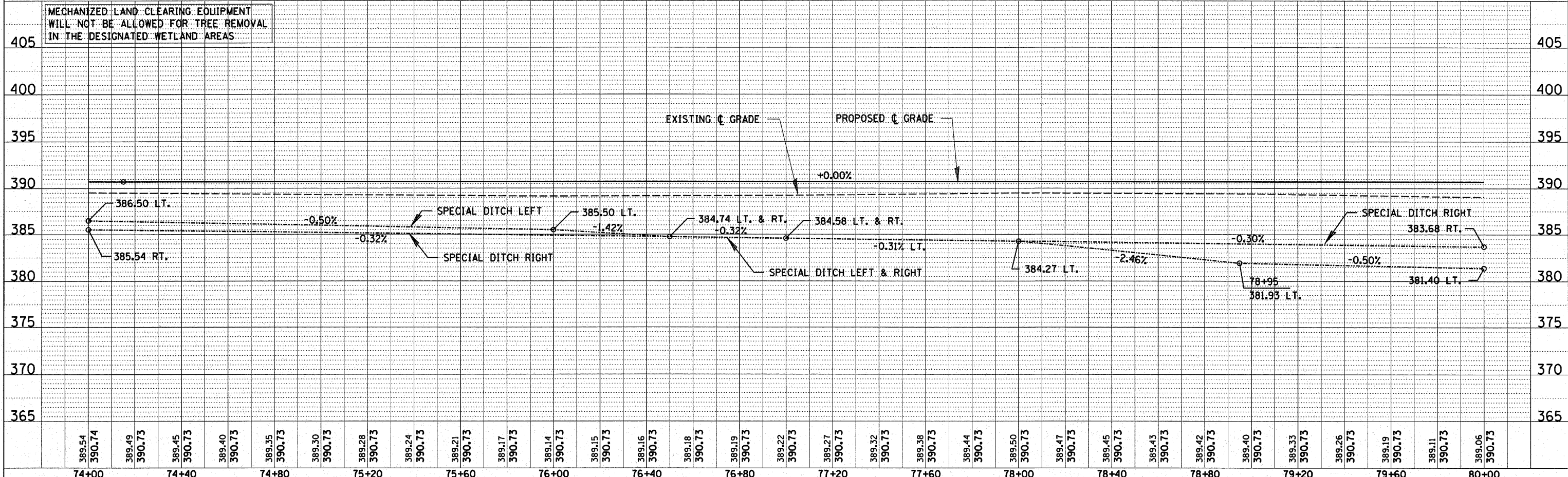
**CURVE #5  
CURVE DATA**  
 PI STA. 81+47.63  
 $\Delta = 25^{\circ} 23' 08.10''$  (LT)  
 $D = 7^{\circ} 30' 00.00''$   
 $R = 763.94'$   
 $T = 172.06'$   
 $L = 338.47'$   
 $E = 19.14'$   
 PC STA. 79+75.57  
 PT STA. 83+14.04  
 TRANSITION  
 STA. 78+72.05 TO STA. 80+03.41  
 STA. 82+86.20 TO STA. 83+97.56  
 S.E. = 4.5%



**LEGEND**  
 TREE REMOVAL ACRE



MECHANIZED LAND CLEARING EQUIPMENT  
 WILL NOT BE ALLOWED FOR TREE REMOVAL  
 IN THE DESIGNATED WETLAND AREAS



FAU	SECTION	COUNTY	TOTAL SHEETS	SHEET NO.
9713	99-02118-00-FP	JACKSON	122	27
STA. 74+00		TO STA. 80+00		

FED. ROAD DIST. NO. ILLINOIS FED. AID PROJECT

CONTRACT NO. 99219

PARCEL 23  
 WILLIAM H. YOUNG

PARCEL 25  
 BILL J. & FAYE MARTIN (2/3 INTEREST)  
 ROBERT & BETTY MARTIN (1/3 INTEREST)

TEMPORARY EASEMENT LINE

PARCEL 26  
 MATTHEW MICHAEL &  
 AMY LYN WRIGHT

