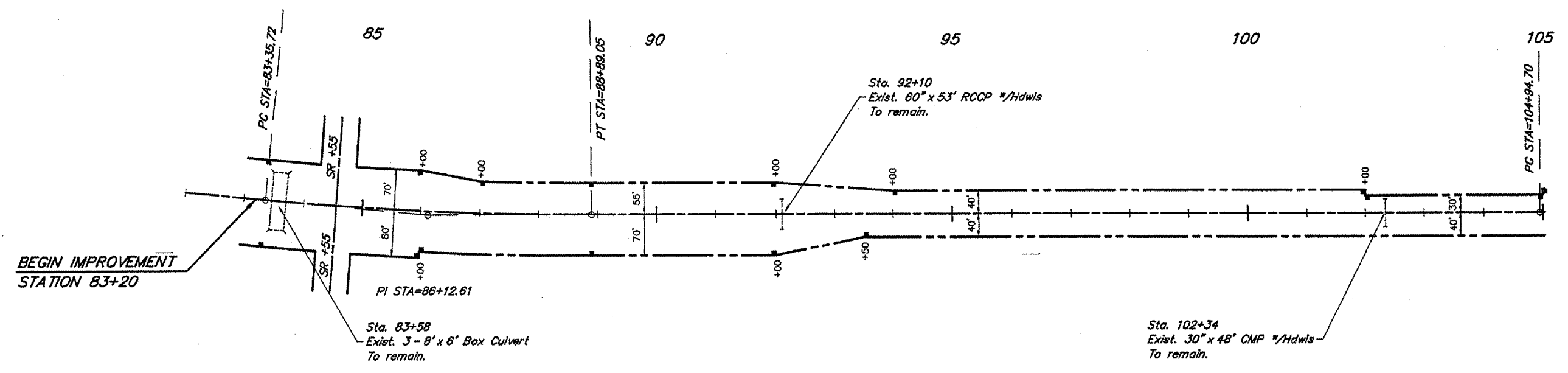


ROUTE	SECTION	COUNTY	TOTAL SHEETS	SHEET NO.
FAS 938	05-00064-00-RS	PULASKI	32	7
PROJECT NO. RS-HPP-3300 (002)			CONTRACT NO. 99260	

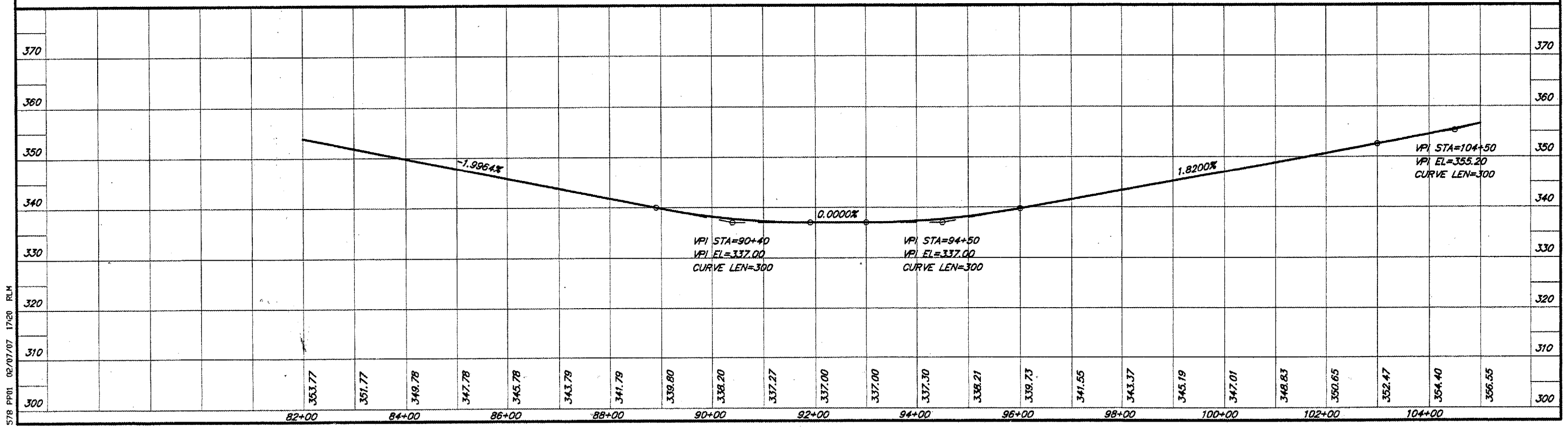
CURVE DATA

$\Delta = 5^{\circ}41'27''$ $T = 276.89'$
 $D = 1^{\circ}01'42''$ $L = 553.33'$
 $R = 5570.97'$ $E = 6.88'$
 $S.E. = 0.019'/ft.$
 Attain Sta. 82+75 to Sta. 83+49
 Remove Sta. 88+75 to Sta. 89+50



NOTE: Locations of entrances shall be determined in the field.
See "Typical Side Road & Entrance Details".

SCALES:
 1" = 200' HOR
 1" = 20' VER



578 PPO1 02/07/07 17:20 RLM