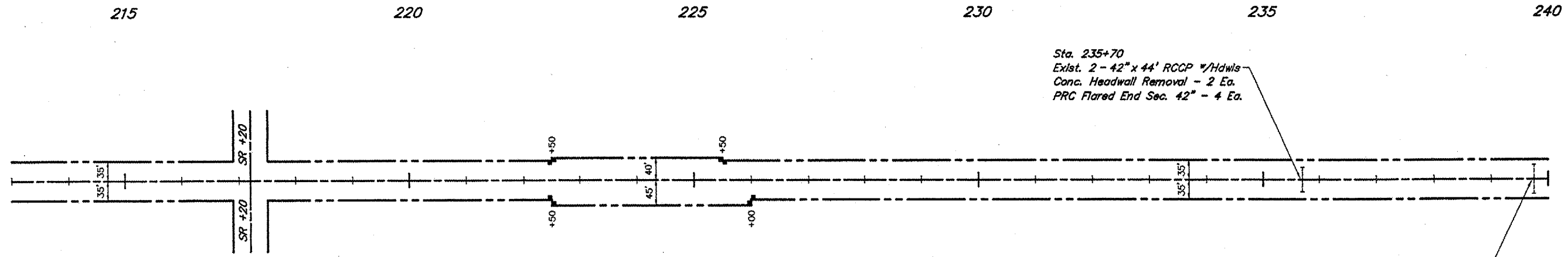


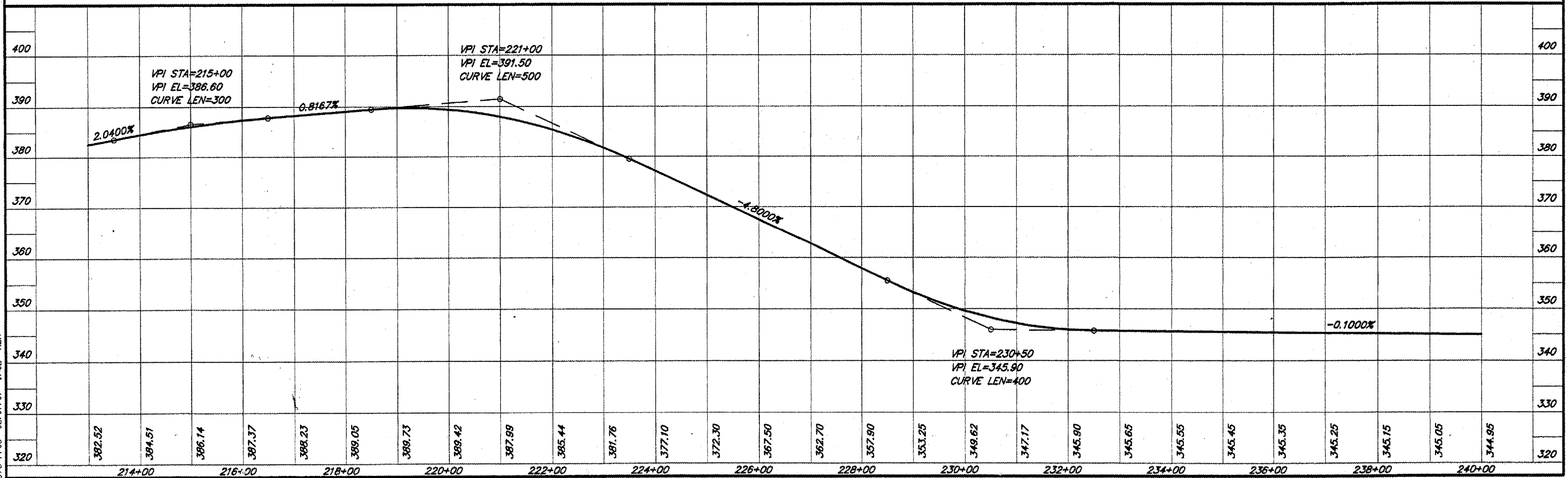
ROUTE	SECTION	COUNTY	TOTAL SHEETS	SHEET NO.
FAS 938	05-00064-00-RS	PULASKI	32	12
PROJECT NO. RS-HPP-3300 (002)			CONTRACT NO. 99260	



Sta. 235+70
 Exst. 2 - 42" x 44' RCCP w/Hdws
 Conc. Headwall Removal - 2 Ea.
 PRC Flared End Sec. 42" - 4 Ea.

Sta. 239+75
 Exst. 42" x 52' RCCP w/Hdws
 To remain.

SCALES:
 1" = 200' HOR
 1" = 20' VER



578 PPO6 02/07/07 1702 RLM