

ROUTE	SECTION	COUNTY	TOTAL SHEETS	SHEET NO.
FAS 938	05-00064-00-RS	PULASKI	32	13
PROJECT NO. RS-HPP-3300 (002)			CONTRACT NO. 99260	



240

245

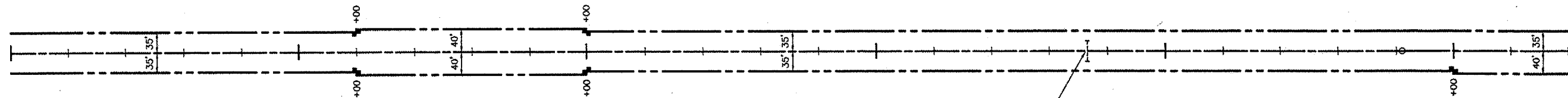
250

255

260

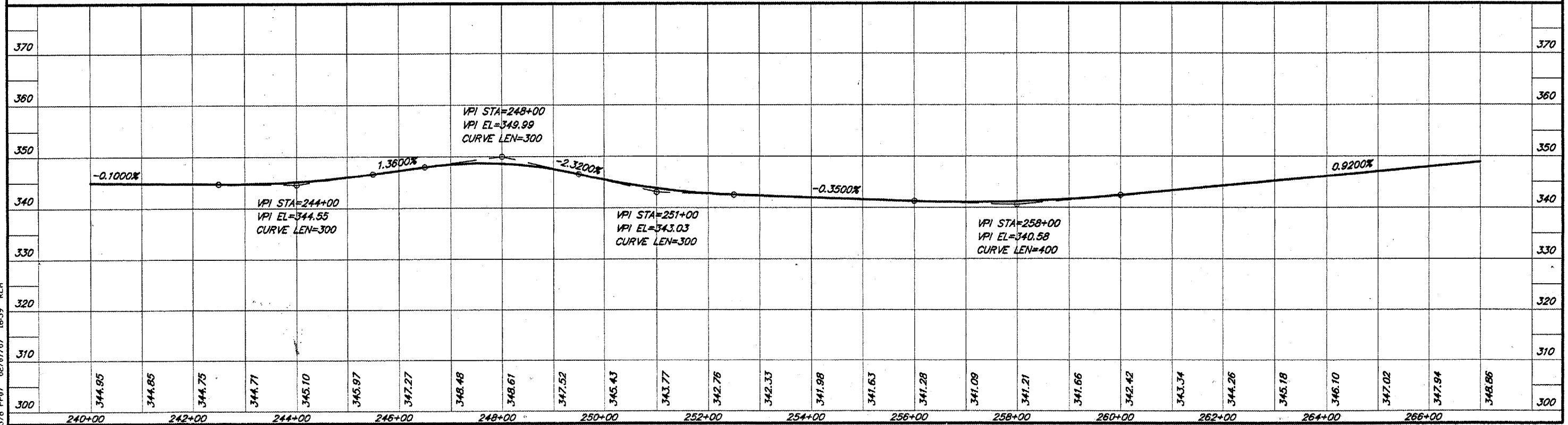
265

PI STA=264+10  
Δ=0°22'00" R



Sta. 258+66  
Exist. 48" x 36" RCCP w/Hdws  
Conc. Headwall Removal - 2 Ea.  
PRC Flared End Sec. 48" - 2 Ea.

SCALES:  
1" = 200' HOR  
1" = 20' VER



578 P07 02/07/07 16:59 RLM