

ROUTE	SECTION	COUNTY	TOTAL SHEETS	SHEET NO.
FAS 938	05-00064-00-RS	PULASKI	32	14
PROJECT NO. RS-HPP-3300 (002)			CONTRACT NO. 99260	



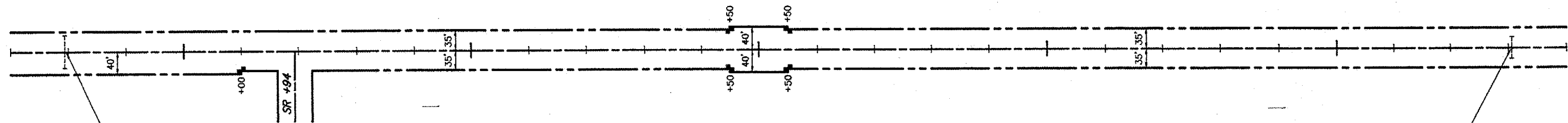
270

275

280

285

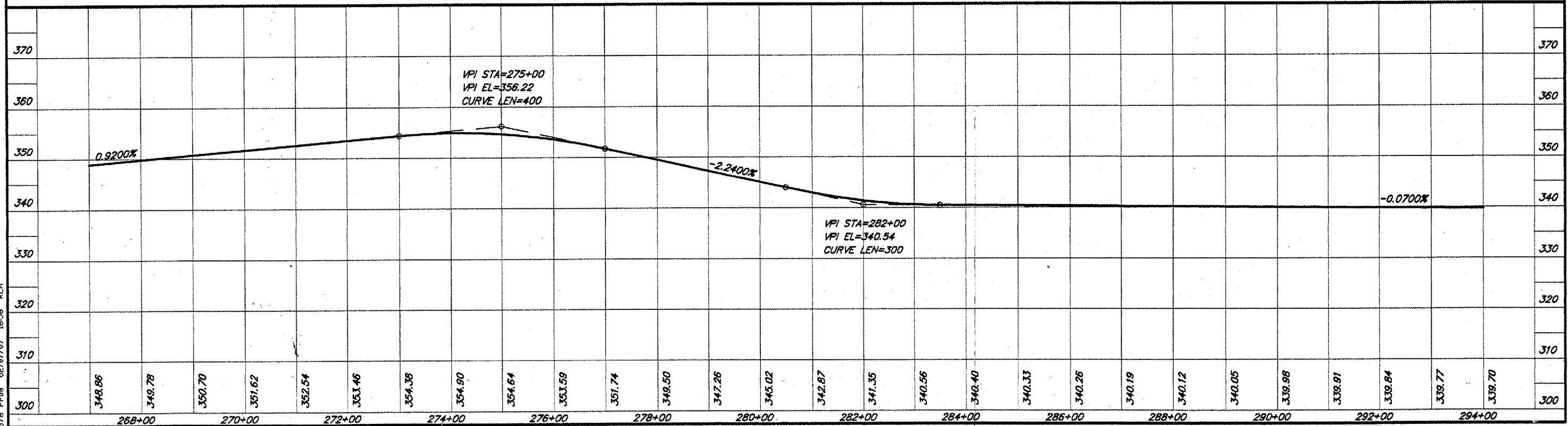
290



Sta. 267+94  
 Exist. 24" x 58' RCCP w/ Hdws  
 Concrete Headwall Removal - 2 Ea.  
 Rem. & Relay P C 24" - 24 Ft. (12' US, 12' DS)  
 PRC Flared End Section 24" - 2 Ea.

Sta. 293+06  
 Exist. 36" x 38' RCCP w/ Hdws  
 To remain.

SCALES:  
 1" = 200' HOR  
 1" = 20' VER



578 PPOB 02/07/07 16:56 RLM