

ROUTE	SECTION	COUNTY	TOTAL SHEETS	SHEET NO.
FAS 938	05-00064-00-RS	PULASKI	32	15
PROJECT NO. RS-HPP-3300 (002)			CONTRACT NO. 99260	



295

300

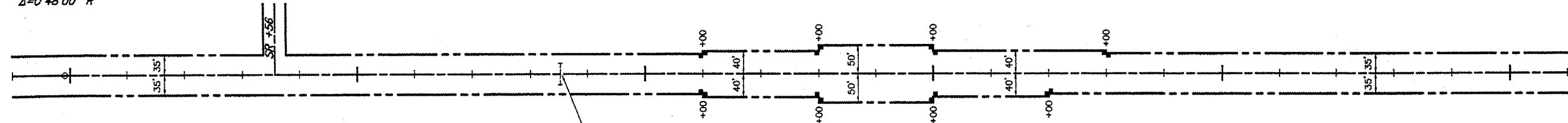
305

310

315

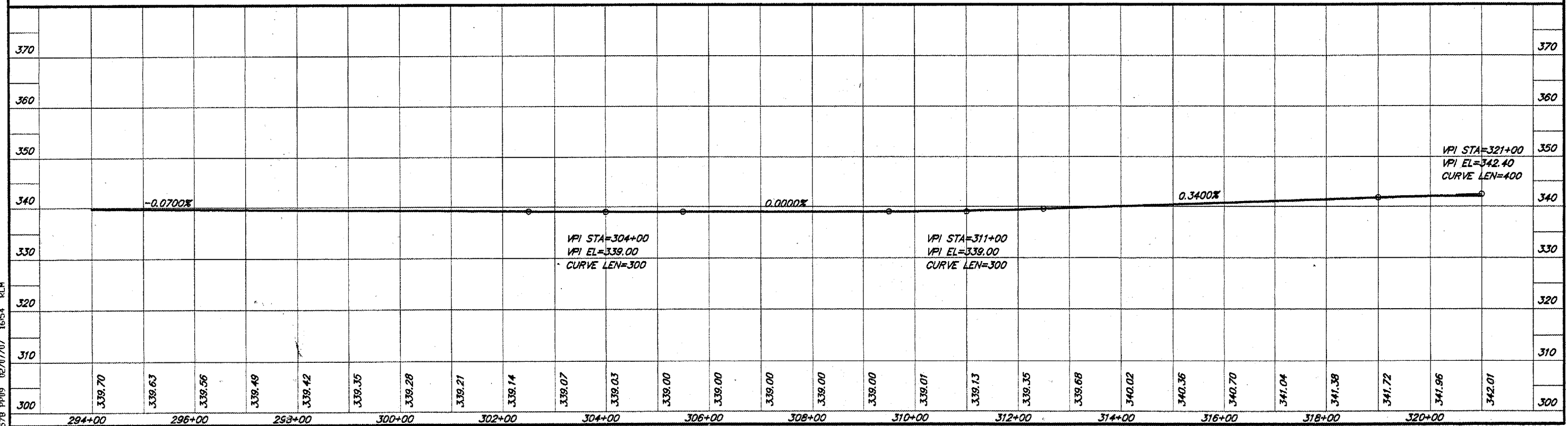
320

PI STA=294+91  
Δ=0°48'00" R



Sta. 303+52  
 Exst. 36" x 38' RCOB w/Hdws  
 Conc. Headwall Removal - 1 Ea. (DS)  
 Rem. & Relay P C 36" - 12 Ft. (DS)  
 PRC Flared End Sec. 36" - 1 Ea. (DS)

SCALES:  
 1" = 200' HOR  
 1" = 20' VER



578 P109 02/07/07 16:54 RLM