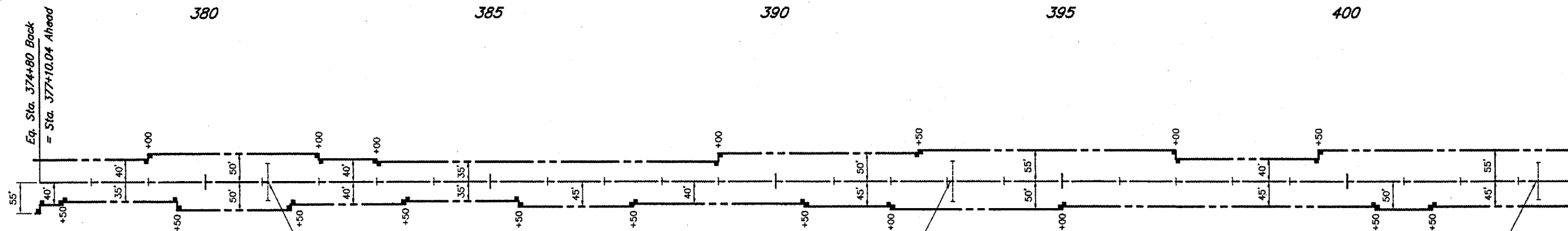


ROUTE	SECTION	COUNTY	TOTAL SHEETS	SHEET NO.
FAS 938	05-00064-00-RS	PULASKI	32	18
PROJECT NO. RS-HPP-3300 (002)			CONTRACT NO. 99260	

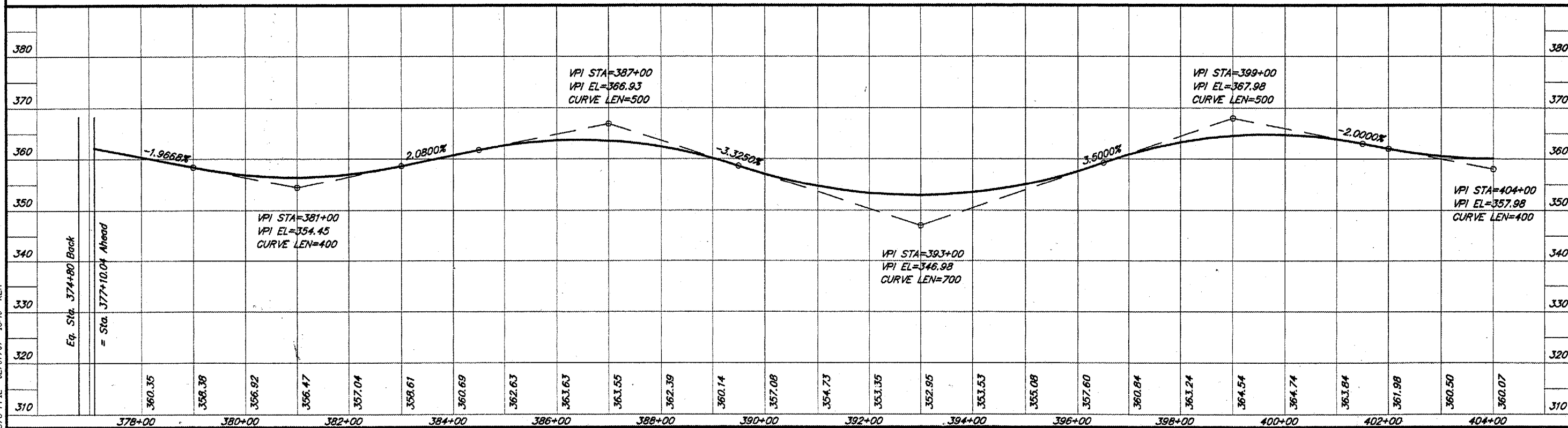


Sta. 381+10
 Exist. 36" x 66' RCCP w/Hdws
 Conc. Headwall Removal - 1 Ea. (DS)
 Rem. & Relay P C 36" - 12 Ft. (DS)
 PRC Flared End Sec. 36" - 1 Ea. (DS)
 Place Riprap at DS end - 20 Tons

Sta. 393+10
 Exist. 48" x 72' RCCP w/Hdws
 Conc. Headwall Removal - 1 Ea. (DS)
 Rem. & Relay P C 48" - 24 Ft. (DS)
 PRC Flared End Sec. 48" - 1 Ea. (DS)
 Place Riprap at DS end - 20 Tons

Sta. 403+35
 Exist. 42" x 66' RCCP w/Hdws
 Conc. Headwall Removal - 1 Ea. (DS)
 Rem. & Relay P C 42" - 12 Ft. (DS)
 PRC Flared End Sec. 42" - 1 Ea. (DS)
 Place Riprap at DS end - 20 Tons

SCALES:
 1" = 200' HOR
 1" = 20' VER



578 PPI2 02/07/07 16:40 RLM