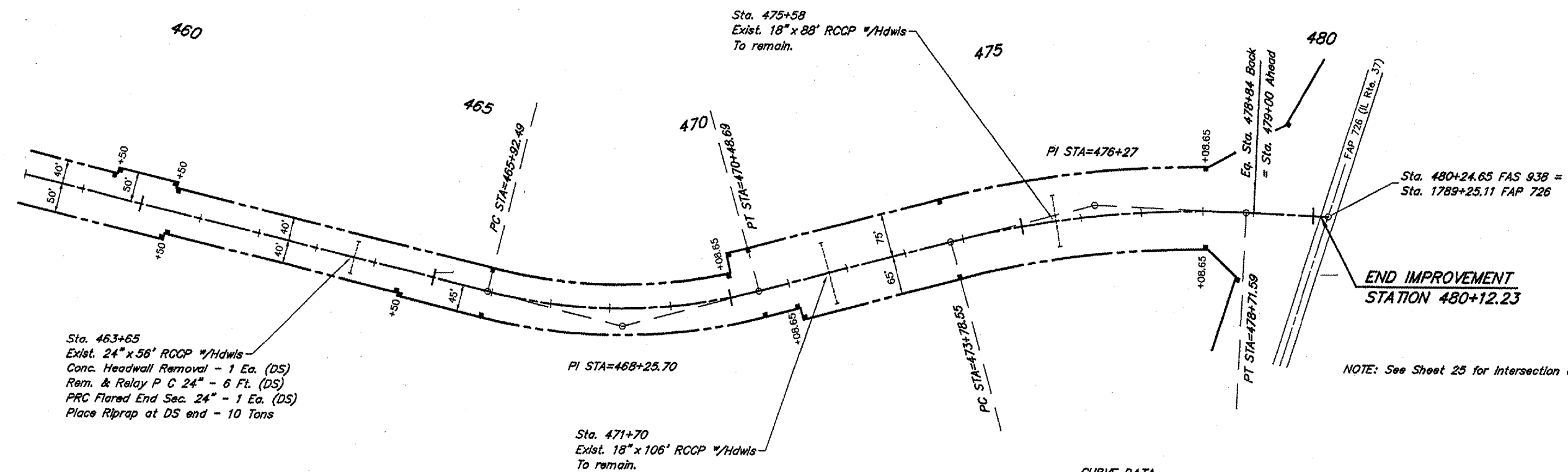




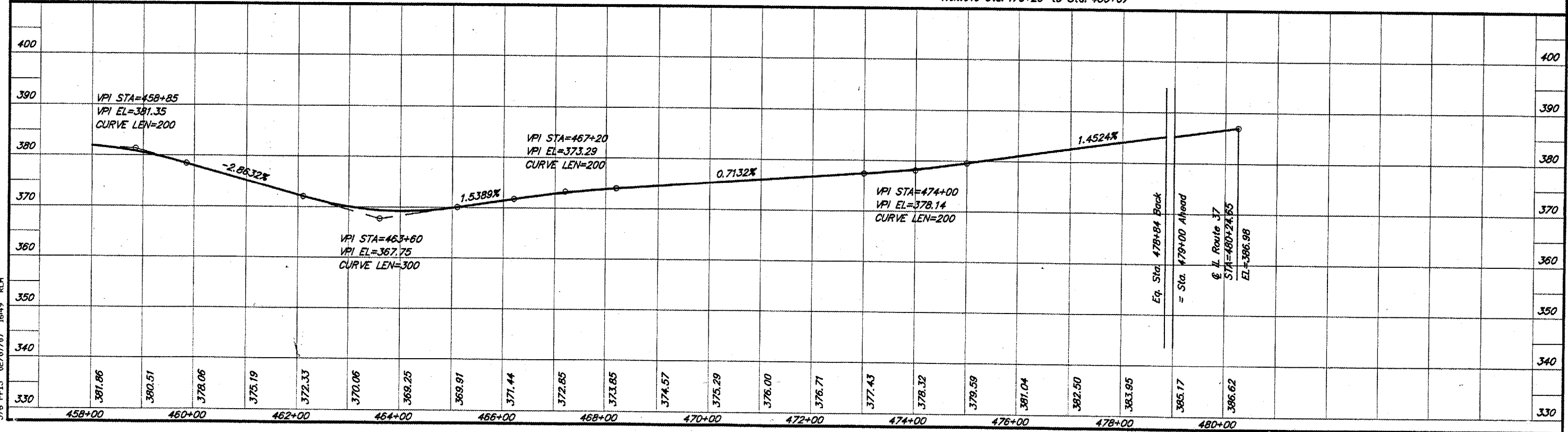
CURVE DATA
 $\Delta = 29^{\circ}20'00''$ $T = 233.22'$
 $D = 6^{\circ}25'48''$ $L = 456.20'$
 $R = 891.08'$ $E = 30.01'$
 $S.E. = 0.078'/ft.$
 Attain Sta. 464+45 to Sta. 466+49
 Remove Sta. 469+92 to Sta. 471+96

ROUTE	SECTION	COUNTY	TOTAL SHEETS	SHEET NO.
FAS 938	05-00064-00-RS	PULASKI	32	21
PROJECT NO. RS-HPP-3300 (002)			CONTRACT NO. 99260	



SCALES:
 1" = 200' HOR
 1" = 20' VER

CURVE DATA
 $\Delta = 17^{\circ}30'00''$ $T = 248.45'$
 $D = 3^{\circ}32'58''$ $L = 493.04'$
 $R = 1614.22'$ $E = 19.01'$
 $S.E. = 0.059'/ft.$
 Attain Sta. 472+59 to Sta. 474+22
 Remove Sta. 478+29 to Sta. 480+07



578 PPI5 02/07/07 16:49 RLM

NOTE: See Sheet 25 for intersection details.