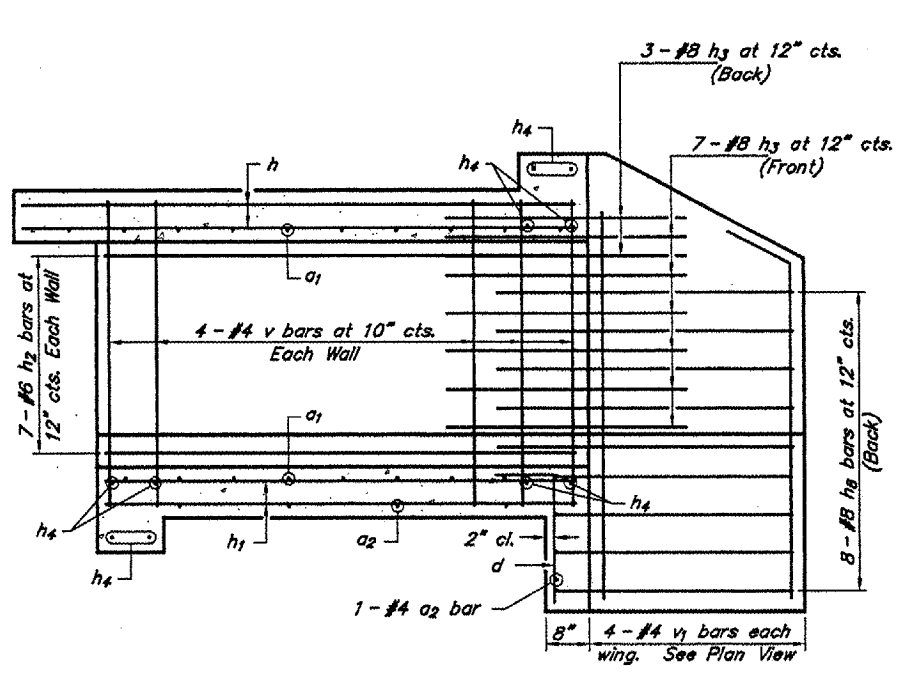
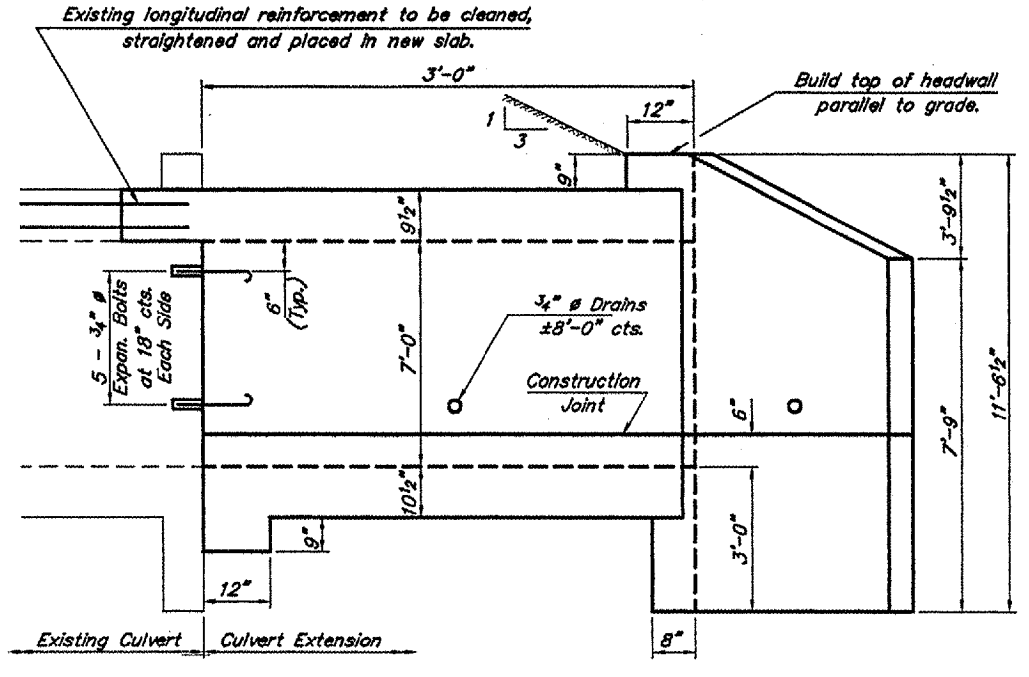


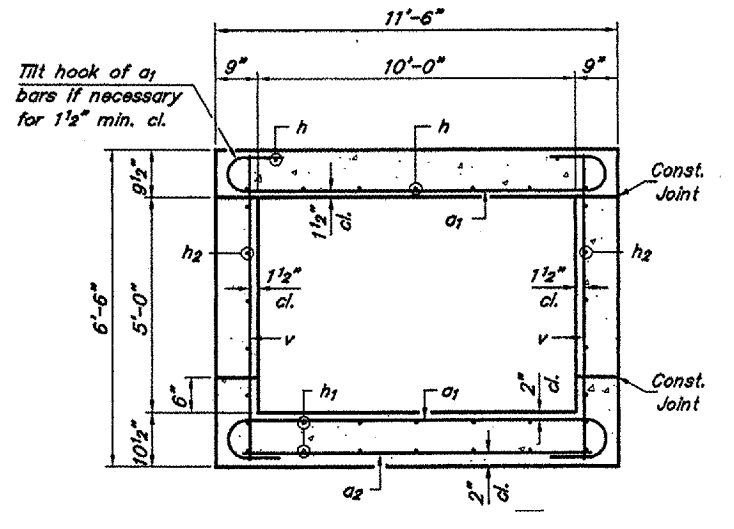
ROUTE	SECTION	COUNTY	TOTAL SHEETS	SHEET NO.
FAS 93B	05-00064-00-RS	PULASKI	32	28
PROJECT NO. RS-HPP-3300 (002)			CONTRACT NO. 99260	



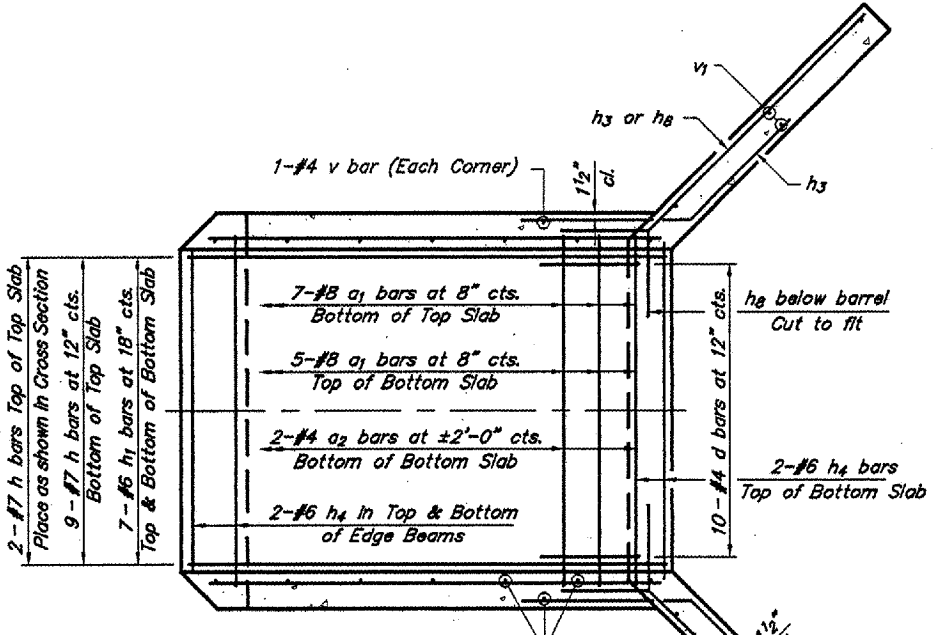
SHOWING REINFORCEMENT



SHOWING OUTLINE



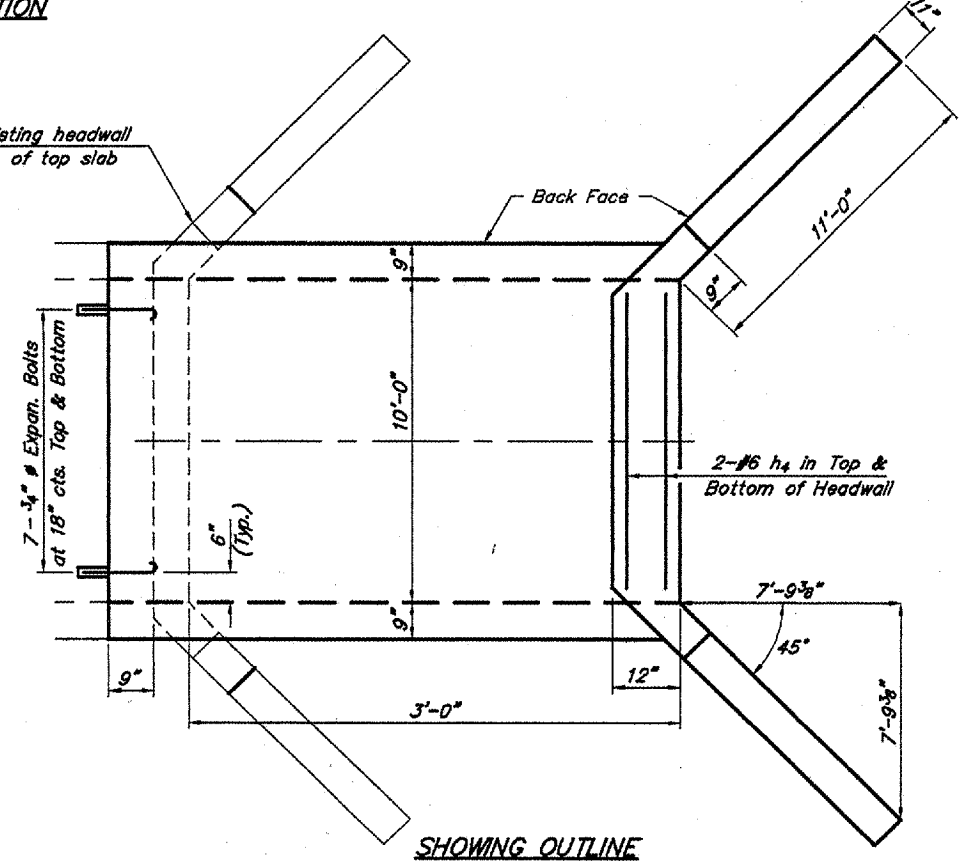
SECTION THRU BARREL



SHOWING REINFORCEMENT

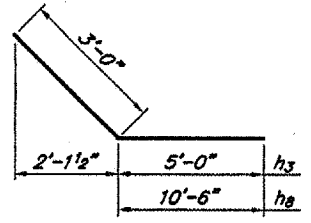
ELEVATION

Remove existing headwall and portion of top slab as shown.

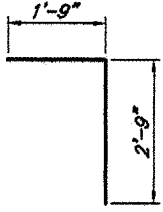


SHOWING OUTLINE

PLAN



BARs h3 & ha



BAR d

BILL OF MATERIAL
(One Extension)

Bar	No.	Size	Length
a1	12	#8	12'-8"
a2	3	#4	10'-3"
d	10	#4	4'-6"
h	11	#7	4'-5"
h1	14	#6	2'-8"
h2	14	#6	2'-8"
h3	20	#8	8'-0"
h4	10	#6	10'-6"
ha	16	#8	13'-6"
v	10	#4	8'-4"
v1	8	#4	10'-6"
Conc. Box Culverts			Cu. Yds. 12.6
Reinforcement Bars			Lbs. 1950
Expansion Bolts			Each 24

BOX CULVERT EXTENSION
STATION 172+52 LT. & RT.
FAS ROUTE 93B
SECTION 05-00064-00-RS
PROJECT NO. HPP-3300
PULASKI COUNTY

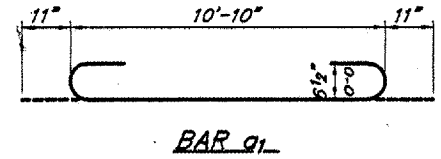
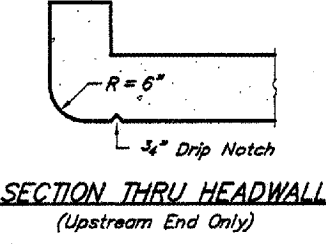
NOTES

Barrel shall be poured monolithically with wingwalls. Exposed edges shall be beveled 3/4". Reinforcement bars shall conform to the requirements of AASHTO M-31, M-42 or M-53, Grade 60. Expansion bolts shall consist of self drilling expansion shields and 3/4" # hooked bolts. Bolts shall extend a minimum of 9" into new concrete.

DESIGN STRESSES

fy = 60,000 psi
fc = 3,500 psi

LOADING HS 20-44 & ALT.



BAR a1