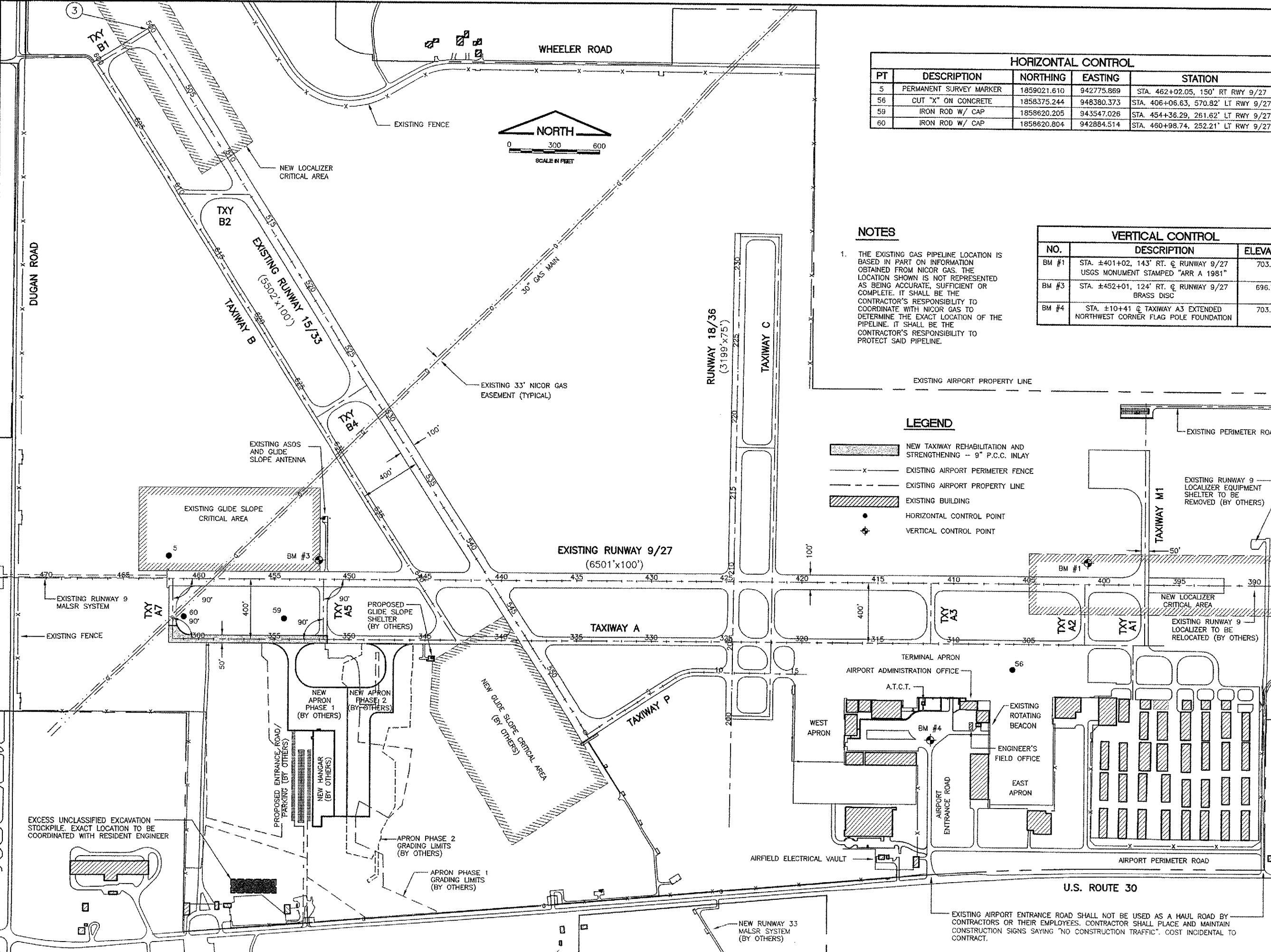
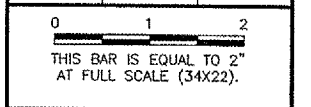


K:\Aurora\0428505 Toy A Ends Rehab\Draw\Sheets\W  
 FILE: Site-west.dwg  
 LAYOUT: Exhibit1  
 UPDATE BY: Adham Odeh  
 SURVEY BOOK #  
 DATE: Thursday, April 19, 2007 4:01:17 PM  
 XREF DWG: tbcint.dwg  
 tb.dwg  
 txyendbase--west.dwg

HORIZONTAL CONTROL				
PT	DESCRIPTION	NORTHING	EASTING	STATION
5	PERMANENT SURVEY MARKER	1859021.610	942775.869	STA. 462+02.05, 150' RT RWY 9/27
56	CUT "X" ON CONCRETE	1858375.244	948380.373	STA. 406+06.63, 570.82' LT RWY 9/27
59	IRON ROD W/ CAP	1858620.205	943547.026	STA. 454+36.29, 261.62' LT RWY 9/27
60	IRON ROD W/ CAP	1858620.804	942884.514	STA. 450+98.74, 252.21' LT RWY 9/27

REVISIONS		
NUMBER	BY	DATE



**NOTES**

1. THE EXISTING GAS PIPELINE LOCATION IS BASED IN PART ON INFORMATION OBTAINED FROM NICOR GAS. THE LOCATION SHOWN IS NOT REPRESENTED AS BEING ACCURATE, SUFFICIENT OR COMPLETE. IT SHALL BE THE CONTRACTOR'S RESPONSIBILITY TO COORDINATE WITH NICOR GAS TO DETERMINE THE EXACT LOCATION OF THE PIPELINE. IT SHALL BE THE CONTRACTOR'S RESPONSIBILITY TO PROTECT SAID PIPELINE.

VERTICAL CONTROL		
NO.	DESCRIPTION	ELEVATION
BM #1	STA. ±401+02, 143' RT. @ RUNWAY 9/27 USGS MONUMENT STAMPED "ARR A 1981"	703.51
BM #3	STA. ±452+01, 124' RT. @ RUNWAY 9/27 BRASS DISC	696.77
BM #4	STA. ±10+41 @ TAXIWAY A3 EXTENDED NORTHWEST CORNER FLAG POLE FOUNDATION	703.61

**LEGEND**

- NEW TAXIWAY REHABILITATION AND STRENGTHENING -- 9" P.C.C. INLAY
- EXISTING AIRPORT PERIMETER FENCE
- EXISTING AIRPORT PROPERTY LINE
- EXISTING BUILDING
- HORIZONTAL CONTROL POINT
- VERTICAL CONTROL POINT

**AURORA MUNICIPAL AIRPORT  
 AURORA, ILLINOIS  
 REHABILITATE AND STRENGTHEN TAXIWAY ALPHA-WEST END**

**SITE PLAN/PROJECT CONTROL PLAN**

© Copyright CMT, Inc.  
**CMT**  
 CRAVIFORD, MURPHY & TILLY, INC.  
 CONSULTING ENGINEERS  
 License No. 184-000813

DESIGN BY:	DKP
DRAWN BY:	JRO
CHECKED BY:	ARM
APPROVED BY:	DKP
DATE:	04/20/07
JOB No:	04285-05
ILLINOIS PROJECT:	ARR-3514
A.I.P. PROJECT:	3-17-0003-B32
<b>FINAL SUBMITTAL</b>	